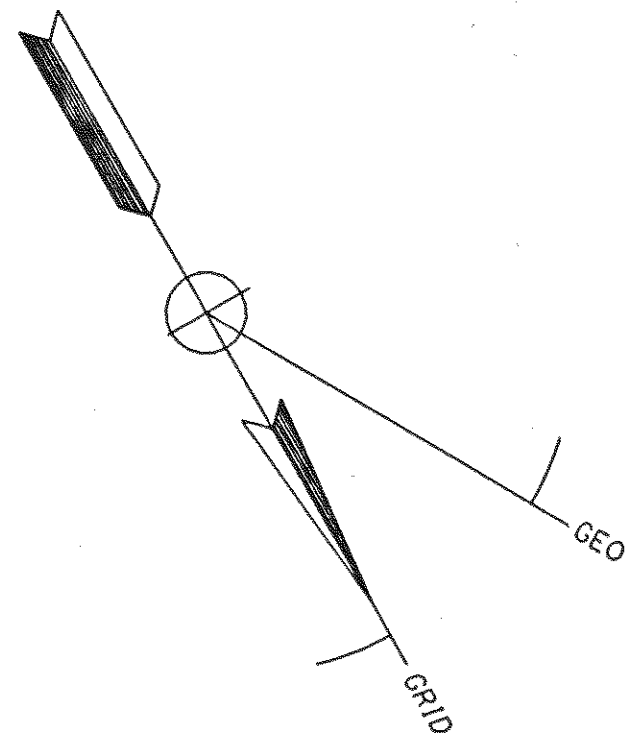
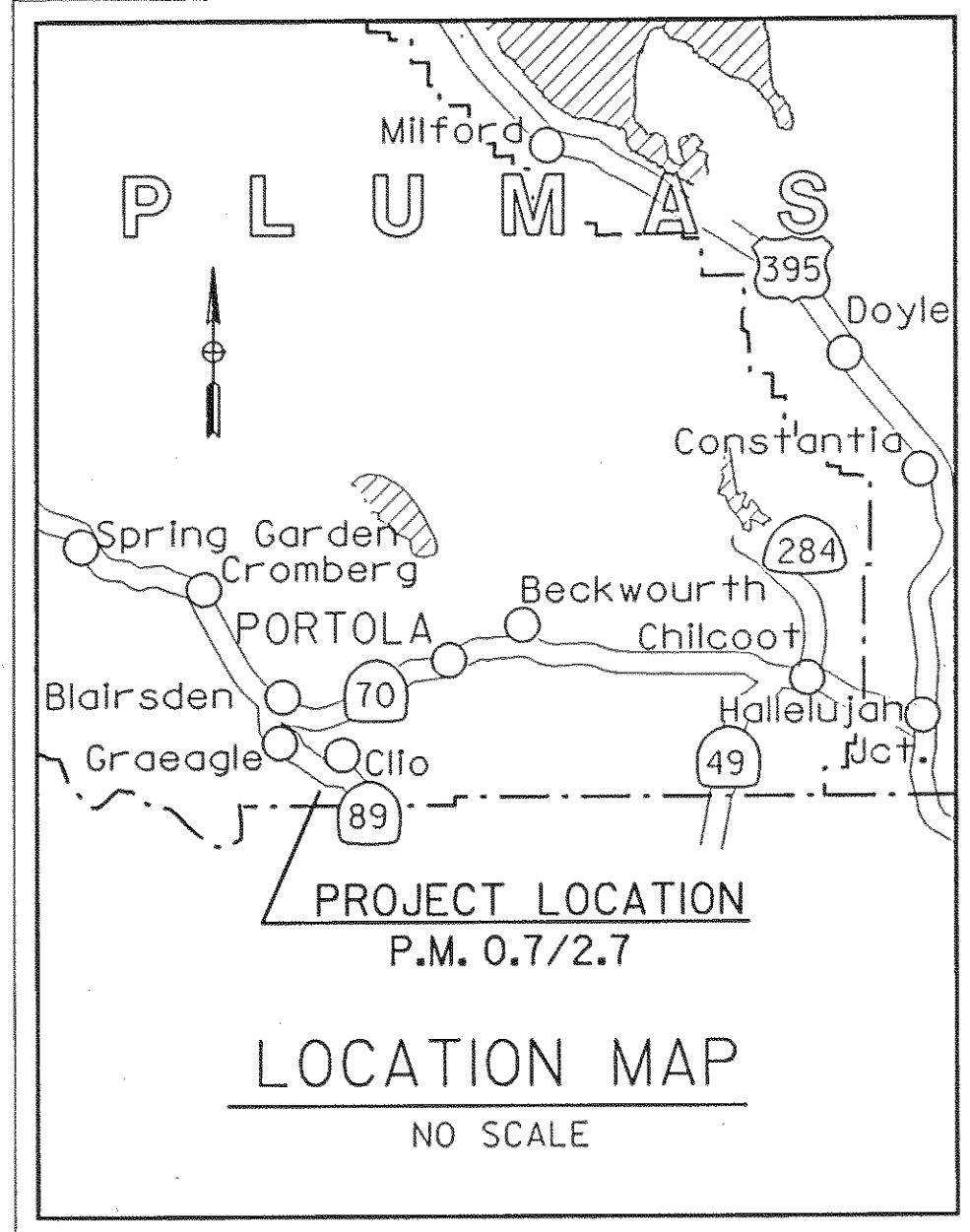


BEARINGS AND DISTANCES ARE BASED ON THE CALIFORNIA COORDINATE SYSTEM OF 1983(1991.35), ZONE 1. DIVIDE DISTANCES BY 0.9998671 TO OBTAIN GROUND LEVEL DISTANCES. DISTANCES ARE EXPRESSED IN METERS UNLESS OTHERWISE NOTED. MULTIPLY DISTANCES EXPRESSED IN METERS BY 3937/1200 TO OBTAIN DISTANCES EXPRESSED IN U.S. SURVEY FEET.



**RECORDER'S STATEMENT**

FILED THIS 22 DAY OF January, 2008  
 AT 3:48 P.M.  
 IN BOOK 14 OF R/S AT PAGE 121-129,  
 AT THE REQUEST OF DEPARTMENT OF TRANSPORTATION.

(SIGNED) \_\_\_\_\_ COUNTY RECORDER  
 BY (SIGNED) Laura L Davis DEPUTY COUNTY RECORDER  
 Doc Number: 2008-0000552  
 NO FEE: STATE BUSINESS

**SURVEYOR'S STATEMENT**

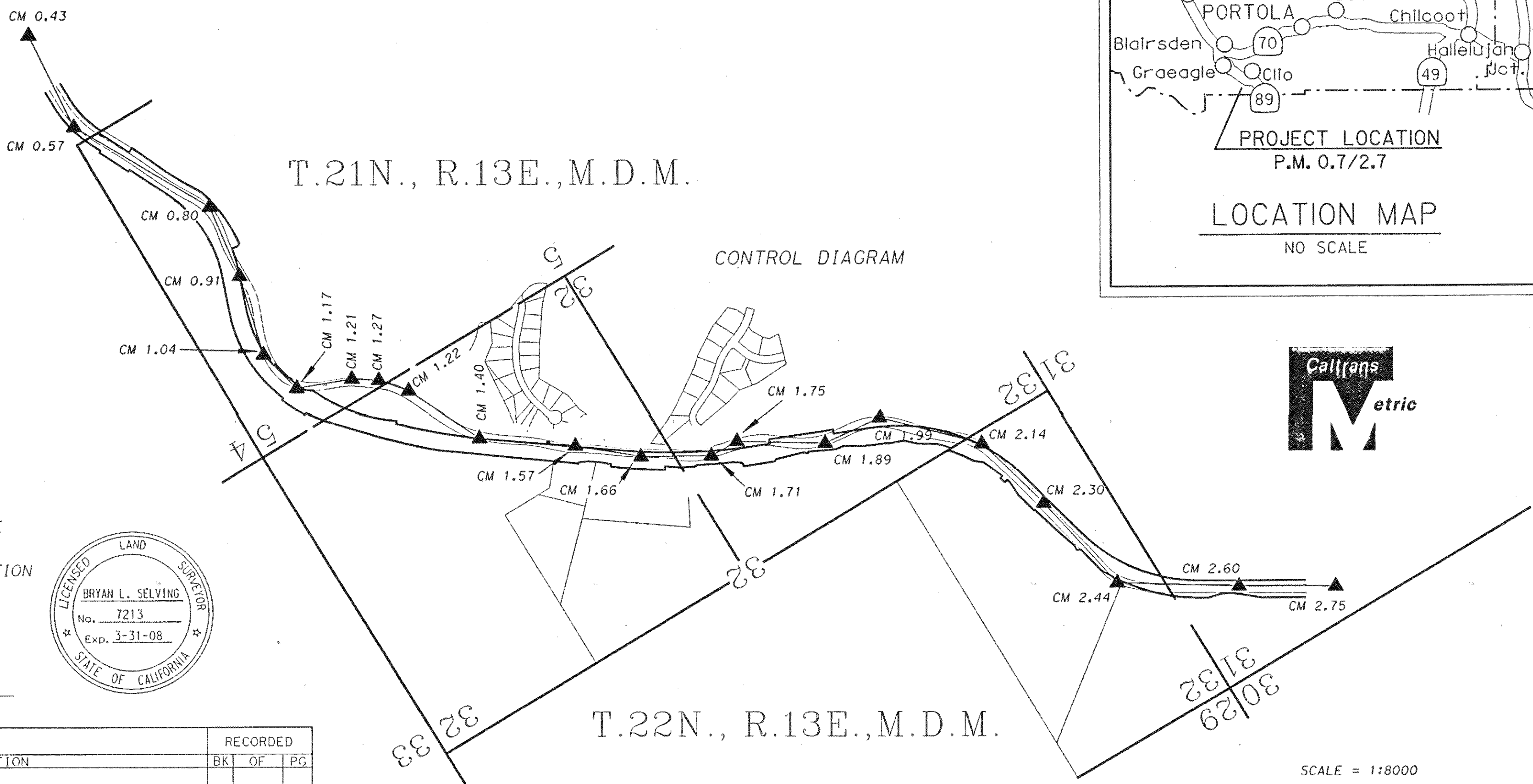
THIS MAP CORRECTLY REPRESENTS A SURVEY MADE BY ME OR UNDER MY DIRECTION IN CONFORMANCE WITH THE REQUIREMENTS OF THE PROFESSIONAL LAND SURVEYORS ACT AT THE REQUEST OF DEPARTMENT OF TRANSPORTATION IN JULY 2002 AND APRIL 2003.

(SIGNED AND SEALED) B.L. Selving  
 L.S. No. 7213  
 LICENSE EXPIRATION DATE 3/31/08



T.21N., R.13E., M.D.M.

CONTROL DIAGRAM

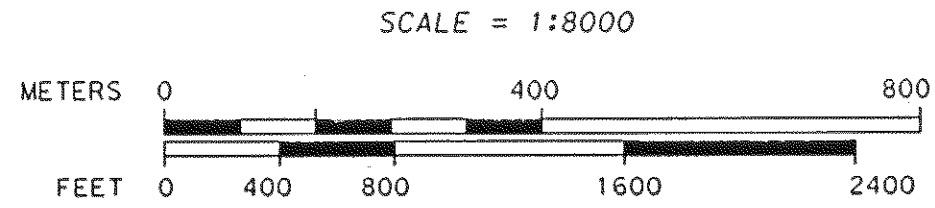
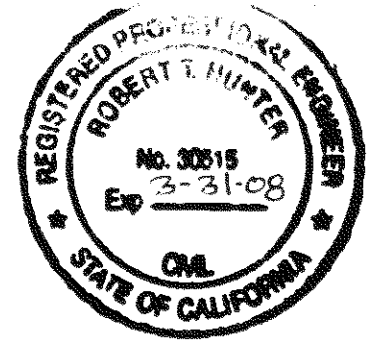


T.22N., R.13E., M.D.M.

CM	COORDINATES		DESCRIPTION	RECORDED		
	NORTH	EAST		BK	OF	PG
0.43	542718.556	2125859.306	T-BAR W/DIV HWYS BATHEY CAP			
0.57	542957.491	2125876.388	T-BAR W/DIV HWYS BATHEY CAP			
0.80	542957.491	2125876.388	T-BAR W/DIV HWYS BATHEY CAP			
0.91	543449.994	2125719.024	T-BAR W/DIV HWYS BATHEY CAP			
1.04	543637.562	2125763.870	REBAR W/ ALUM CT CAP			
1.17	543744.629	2125737.030	T-BAR W/DIV HWYS BATHEY CAP			
1.21	543789.723	2125615.992	REBAR W/ ALUM CT CAP			
1.22	543823.352	2125564.055	T-BAR W/DIV HWYS BATHEY CAP			
1.27	543879.063	2125516.298	PK NAIL AND WASHER	12	ROS	21
1.40	544057.633	2125429.639	T-BAR W/DIV HWYS BATHEY CAP			
1.57	544183.773	2125246.935	REBAR W/ ALUM CT CAP			
1.66	544281.553	2125127.621	REBAR W/ ALUM CT CAP			
1.71	544361.271	2124985.727	REBAR W/ ALUM CT CAP			
1.75	544362.159	2124918.180	T-BAR W/DIV HWYS BATHEY CAP			
1.89	544467.560	2124744.632	T-BAR W/DIV HWYS BATHEY CAP			
1.99	544479.346	2124606.294	T-BAR W/DIV HWYS BATHEY CAP			
2.14	544649.866	2124431.158	T-BAR W/DIV HWYS BATHEY CAP			
2.30	544840.535	2124375.720	REBAR W/ ALUM CT CAP			
2.44	545086.614	2124322.588	REBAR W/ ALUM CT CAP			
2.60	545233.726	2124084.379	REBAR W/ ALUM CT CAP			
2.75	545345.608	2123890.752	T-BAR W/ BATHEY CAP "CM 2.75"	12	ROS	21

**COUNTY SURVEYOR'S STATEMENT**

THIS MAP HAS BEEN EXAMINED IN ACCORDANCE WITH SECTION 8766 OF THE PROFESSIONAL LAND SURVEYORS ACT THIS 17<sup>th</sup> DAY OF Jan., 2008  
 (SIGNED AND SEALED) R Tom Hunter COUNTY SURVEYOR  
 L.S. (OR R.C.E.) No. RC 30515  
 LICENSE EXPIRATION DATE 3-31-08



STATE OF CALIFORNIA  
 BUSINESS, TRANSPORTATION, AND HOUSING AGENCY  
 DEPARTMENT OF TRANSPORTATION  
 DISTRICT 02  
**RECORD OF SURVEY  
 OF MONUMENTATION**  
 IN THE UNINCORPORATED TERRITORY OF THE  
 COUNTY OF PLUMAS, STATE OF CALIFORNIA  
 ALONG STATE HIGHWAY ROUTE 89 P.M.0.0/2.7  
 IN SECTION 5, T.21 N., R.13 E., M.D.M.