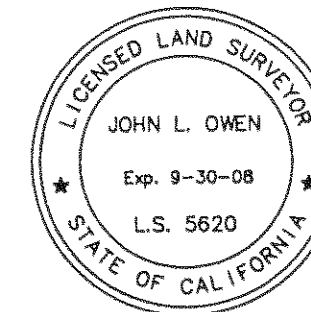


SURVEYOR'S STATEMENT

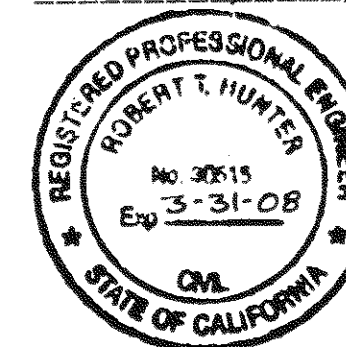
This map correctly represents a survey made by me or under my direction in conformance with the requirements of the Professional Land Surveyors' Act at the request of Chris Kennedy in April, 2007.



John L. Owen LS 5620

COUNTY SURVEYOR'S STATEMENT

This map has been examined in accordance with Section 8766 of the Professional Land Surveyors' Act this 2nd day of January, 2008.



By: R. Tom Shurtin
PLUMAS COUNTY SURVEYOR
License Expiration Date: 3-31-08
RCE 30515

RECORDER'S STATEMENT

Filed this 7th day of January, 2008 at 9:35 a.m. in Book 14 of Record of Surveys, at page 115, at the request of the County Surveyor.

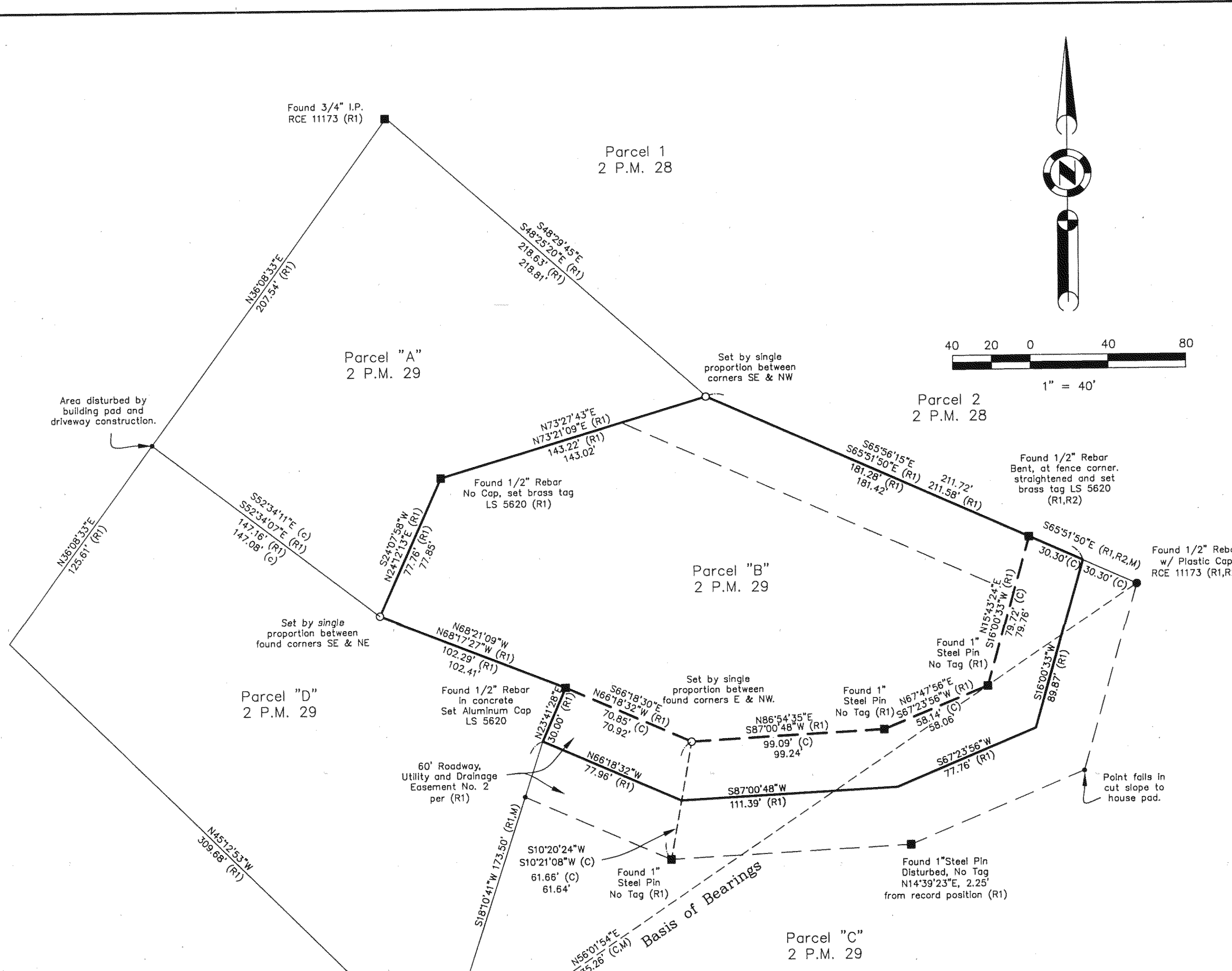
Fee: \$8.00
Document No. 2008-0000080

Kathleen Williams
County Recorder
By: Laura Davis
Deputy

RECORD OF SURVEY
for
Chris & Jennifer Kennedy

Parcel "B", 2 P.M. 29
A portion of the NW 1/4 of Section 18
Township 24 North, Range 10 East, M.D.M.
Book 773 O.R. at Page 217
Plumas County ~ California
Scale 1" = 40' August, 2007

Hamby Surveying Inc.
P.O. Box 1209
Portola, CA 96122
(530) 832-5571



LEGEND
■ FOUND point as described
● FOUND 1/2" Rebar with Plastic Cap RCE 11173
○ SET 5/8" Rebar & Plastic Cap LS 5620
• Nothing found or set
(R1) RECORD per 2 PM 29
(R2) RECORD per 2 PM 28
(C) Calculated from Record

LEGEND
--- Road and Utility Easement per (R1)
— Surveyed Line
--- Record Lines
- - - Calculated Lines

Basis of Bearings
The Basis of Bearings of this map is the calculated line between found monuments shown on 2 PM 29 being N56°01'54"E, as shown hereon.