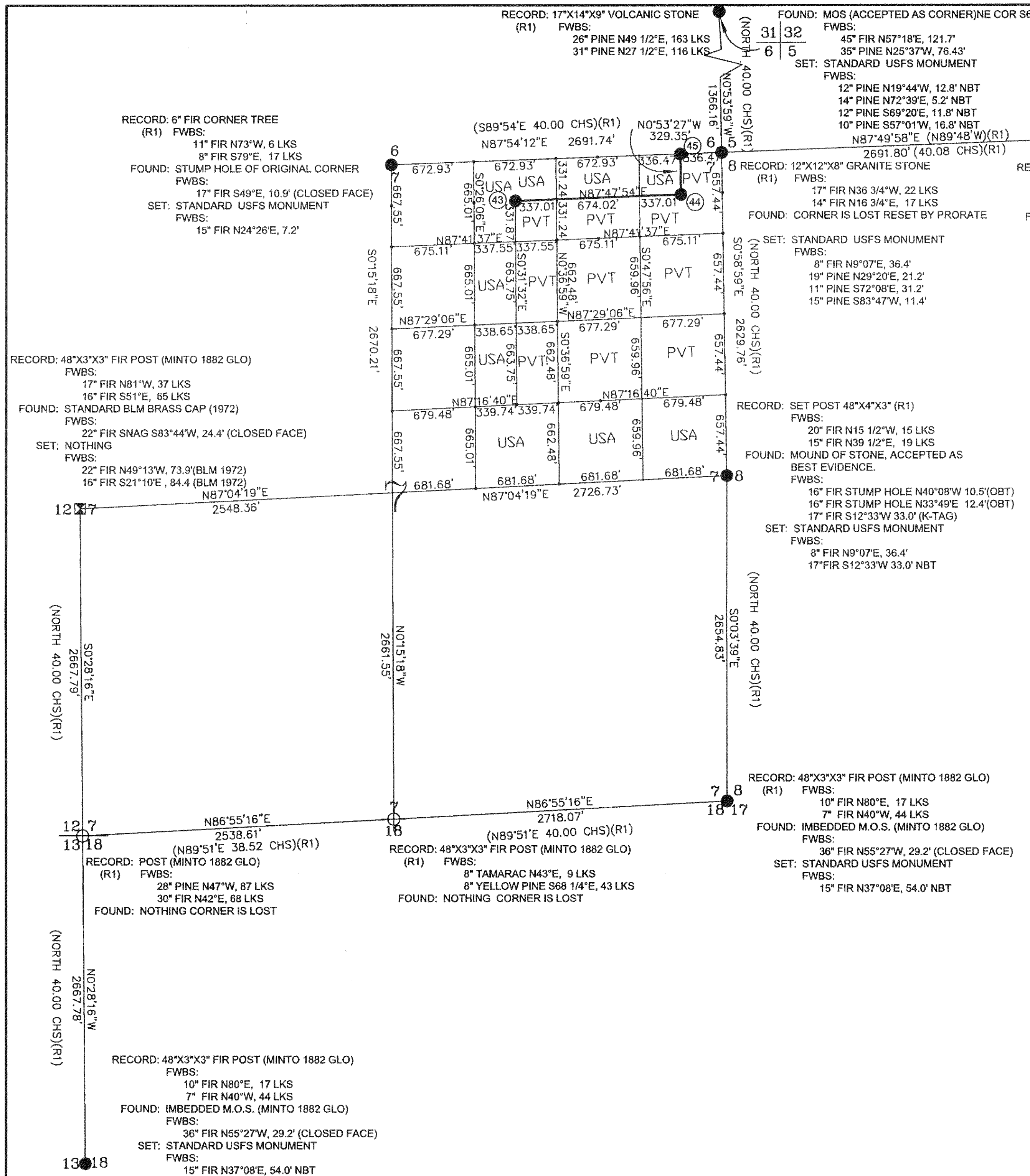
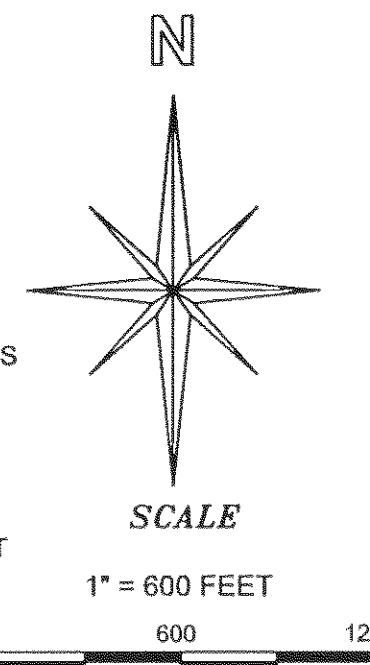


VICINITY MAP  
NOT TO SCALE

26	25	30	29
35	36	31	32
2	1	6	5
11	12	7	8



RECORD: 12"x10"x10" GRANITE STONE (R1)  
FWBS:  
16" PINE N79 1/4"W, 107 LKS  
16" PINE S53"E, 24 LKS  
FOUND: 12"x10"x10" GRANITE STONE  
FWBS:  
40" PINE N85°51'W, 72.0'  
39" PINE S62°15'E, 16.5'  
SET: STANDARD USFS MONUMENT  
FWBS:  
11" FIR N68°55'W, 11.2'  
10" FIR S19°15'E, 15.3'

**GENERAL NOTES**

A STANDARD UNITED STATES FOREST SERVICE (USFS) DRIVE-IN MONUMENT IS A 5/8" DIAMETER ALUMINUM ROD WITH A 3-1/4" ALUMINUM CAP EDGE-MARKED WITH THE USFS LOGO.

A STANDARD BUREAU OF LAND MANAGEMENT (BLM) MONUMENT IS A 2-1/2" DIAMETER STEEL PIPE, 28" LONG WITH A 3-1/2" BRASS CAP EDGE-MARKED WITH THE BLM LOGO.

**SURVEY HISTORY**

(R1) = GENERAL LAND OFFICE NOTES (WM. MINTO 1880)

**BASIS OF BEARINGS**

\*MEASURED BEARINGS AND DISTANCES ARE GRID BASED ON THE CALIFORNIA COORDINATE SYSTEM OF 1983 (CCS83), ZONE 1.

θ = 0°52'04" AT HPGN D CA 02 ES, MULTIPLY GRID DISTANCES BY 1.0003024 TO GET GROUND DISTANCES.

CONTROL WAS ESTABLISHED WITH G.P.S., TOPCON HIPER, DUAL FREQUENCY. CONTROL WAS ESTABLISHED USING THE FOLLOWING STATIONS:

"HPGN D CA 02 ES" (DF4390) EPOCH: MARCH, 2003  
LATITUDE: 40°10'42.49563" N 1949611.19 N  
LONGITUDE: 121°05'35.39575" W 6815050.79 E

"HPGN CA 02 27" (KS2012) EPOCH: AUGUST 1996  
LATITUDE: 39°51'14.41395" N 1832871.05 N  
LONGITUDE: 120°41'06.40820" W 6930833.50 E

LATITUDES AND LONGITUDES AS PUBLISHED BY NATIONAL GEODETIC SURVEYS (NGS) IN JUNE 2001.

**STATE PLANE COORDINATES  
CALIFORNIA - ZONE 1 1983**

θ = 0°52'04" AT NORTHEAST COR. IRON DYKE MINERAL CLAIM. MULTIPLY GRID DISTANCES BY 1.0003024 TO GET GROUND DISTANCES.

CORNER #	NORTHING	EASTING
N 1/4 S7	1874228.174	6933205.989
N 1/4 S8	1874428.440	6938585.794
W 1/4 S7	1871427.808	6930672.842
E 1/4 S7	1871697.277	6935941.044
SE S7	1869042.449	6935943.866
W 1/4 S18	1866092.421	6930716.713

MULTIPLY MEASURED DISTANCES BY 1.0003024 TO GET GROUND DISTANCES

**LEGEND**

- PRORATED CORNER POINT  
SEARCHED FOR ORIG. CORNER NOT FOUND
- FOUND BLM CORNER
- GLO GENERAL LAND OFFICE (1880)
- SET STANDARD U.S. FOREST SERVICE DRIVE-IN MONUMENT (BEARING TREES AS NOTED)
- PROPERTY BOUNDARY MARKED AND POSTED
- CORNER NUMBER SEE PAGE 3 OF 3.

**RECORD OF SURVEY**  
SECTION 7, T24N R12E, MDM,  
PLUMAS COUNTY, CALIFORNIA  
FOR  
U.S.D.A. PLUMAS NATIONAL FOREST  
P.O. BOX 11500, QUINCY, CA.  
DRAWN BY: B. SNOW DATE: OCTOBER, 2006