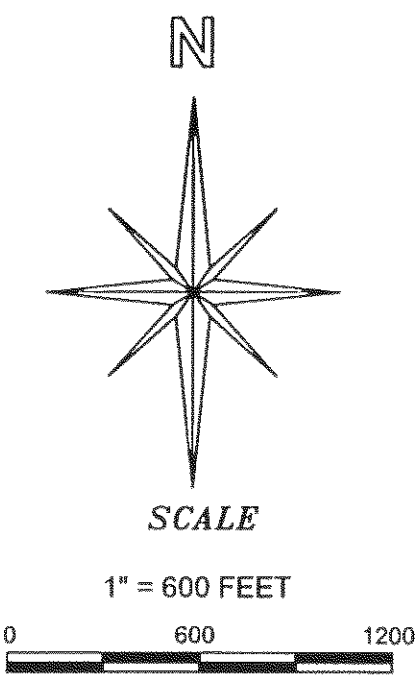
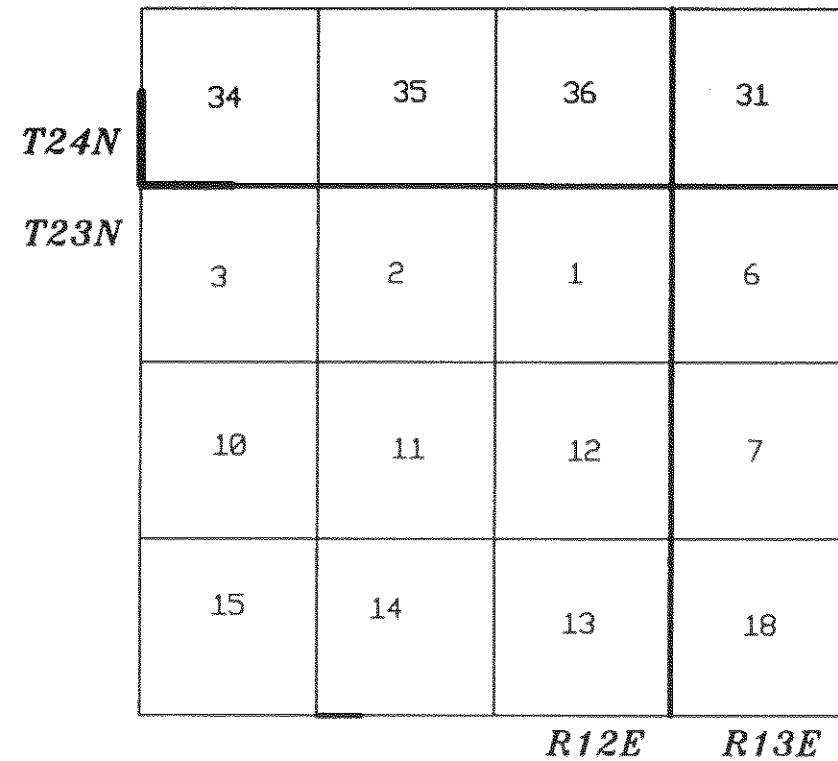


VICINITY MAP
NOT TO SCALE



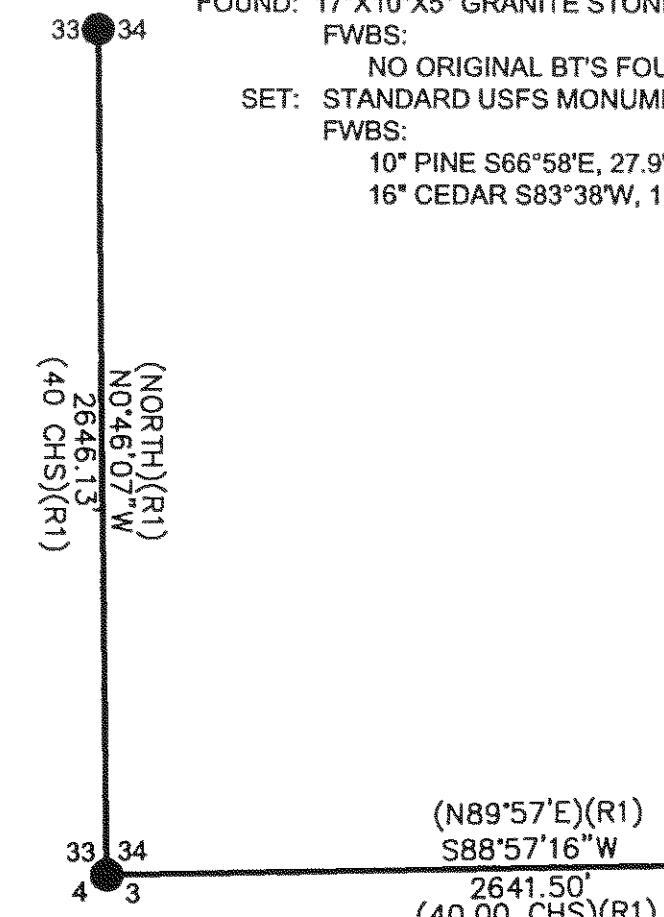
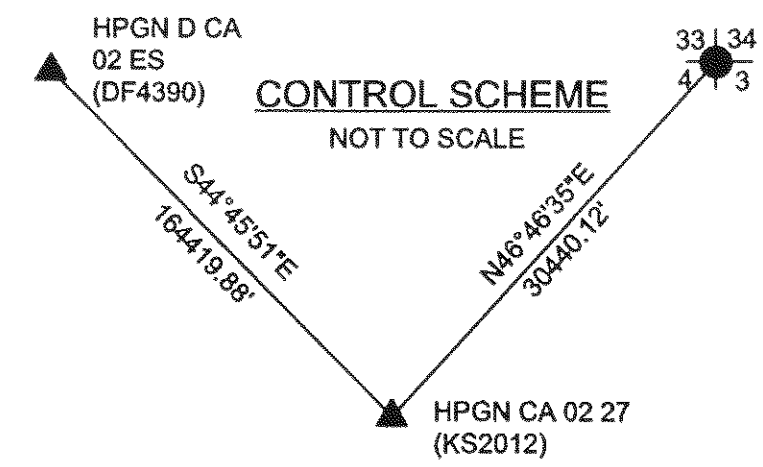
- LEGEND**
- ⊕ PRORATED CORNER POINT SEARCH FOR ORIG. CORNER, NOT FOUND
 - SET STANDARD U.S. FOREST SERVICE DRIVE-IN MONUMENT (BEARING TREES AS NOTED)
 - PROPERTY BOUNDARY MARKED AND POSTED

BASIS OF BEARINGS
 *MEASURED BEARINGS AND DISTANCES ARE GRID BASED ON THE CALIFORNIA COORDINATE SYSTEM OF 1983 (CCS83), ZONE 1. (KS2012)
 $\theta = 0^\circ 51' 35.2''$ AT HPGN D CA 02 ES, MULTIPLY GRID DISTANCES BY 0.99983488 TO GET GROUND DISTANCES.

CONTROL WAS ESTABLISHED WITH G.P.S., TOPCON HIPER, DUAL FREQUENCY. CONTROL WAS ESTABLISHED USING THE FOLLOWING STATIONS:
 HPGN D CA 02 ES (DF4390) EPOCH: MARCH, 2003
 LATITUDE: $40^\circ 10' 42.49563''$ N 1949611.19 N
 LONGITUDE: $121^\circ 05' 35.39575''$ W 6815050.79 E
 HPGN CA 02 27 (KS2012) EPOCH: AUGUST 1996
 LATITUDE: $39^\circ 51' 14.41395''$ N 1832871.05 N
 LONGITUDE: $120^\circ 41' 06.40820''$ W 6930833.50 E
 LATITUDES AND LONGITUDES AS PUBLISHED BY NATIONAL GEODETIC SURVEYS (NGS) IN JUNE 2001.

RECORD: 17"X10"X5" GRANITE STONE IN M.O.S. (R1) FWBS:
 20" PINE S58 1/4"E, 60 LKS
 26" PINE S48 1/2"W, 70 LKS
 FOUND: 17"X10"X5" GRANITE STONE IN M.O.S. FWBS:
 NO ORIGINAL BT'S FOUND
 SET: STANDARD USFS MONUMENT
 FWBS:
 10" PINE S66°58'E, 27.9' NBT
 16" CEDAR S83°38'W, 13.8' NBT

34



RECORD: 12"X12"X8" GRANITE STONE (R1) (R1) FWBS:
 36" PINE S8°W, 175 LKS
 40" PINE N22 1/4"E, 189 LKS
 FOUND: 12"X12"X8" GRANITE STONE IN M.O.S. FWBS:
 38" PINE STUMP S7°W, 116.9'
 57" PINE DOWN W/SCRIBE N16°07'E, 125.9'
 SET: STANDARD USFS MONUMENT IN M.O.S. FWBS:
 9" PINE S41°53'E, 58.6'
 12" PINE S80°52'W, 22.7'
 11" PINE N22°07'W, 9.8'

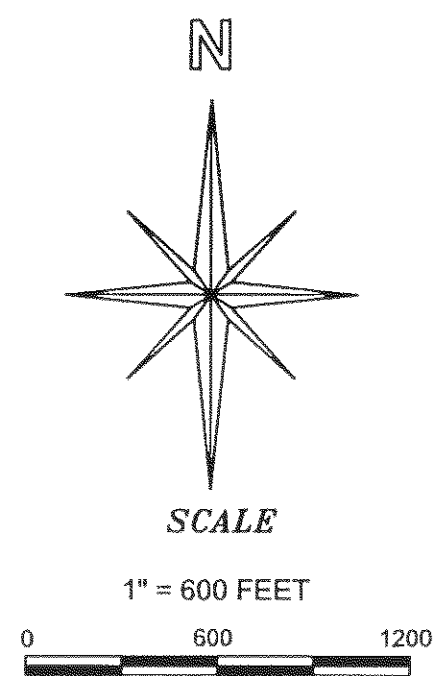
RECORD: 12"X8"X6" GRANITE STONE (R1) (R1) FWBS:
 10" PINE S44°W, 234 LKS
 26" PINE N33°E, 218 LKS
 FOUND: MOUND OF STONE FWBS:
 30" PINE S44°48'W, 155.2'
 SET: STANDARD USFS MONUMENT IN M.O.S. FWBS:
 15" PINE S89°56'E, 171.9'
 10" PINE N17°E, 140.6'

RECORD: 16"X10"X7" GRANITE STONE (R1) (R1) FWBS:
 28" PINE N58°E, 15 LKS
 36" PINE S26 3/4"E, 188 LKS
 22" PINE S18 3/4"W, 132 LKS
 12" CEDAR N45°W, 114 LKS
 FOUND: 16X11"X8" GRANITE STONE FWBS:
 37" DEAD PINE N61°E, 11.5'
 PINE STUMP S27°14'W, 125.5'
 34" PINE S16°58'W, 85.5'
 SET: STANDARD USFS MONUMENT IN M.O.S. FWBS:
 11" S1°41'E, 36.8' NBT
 11" N50°37'W, 23.3' NBT

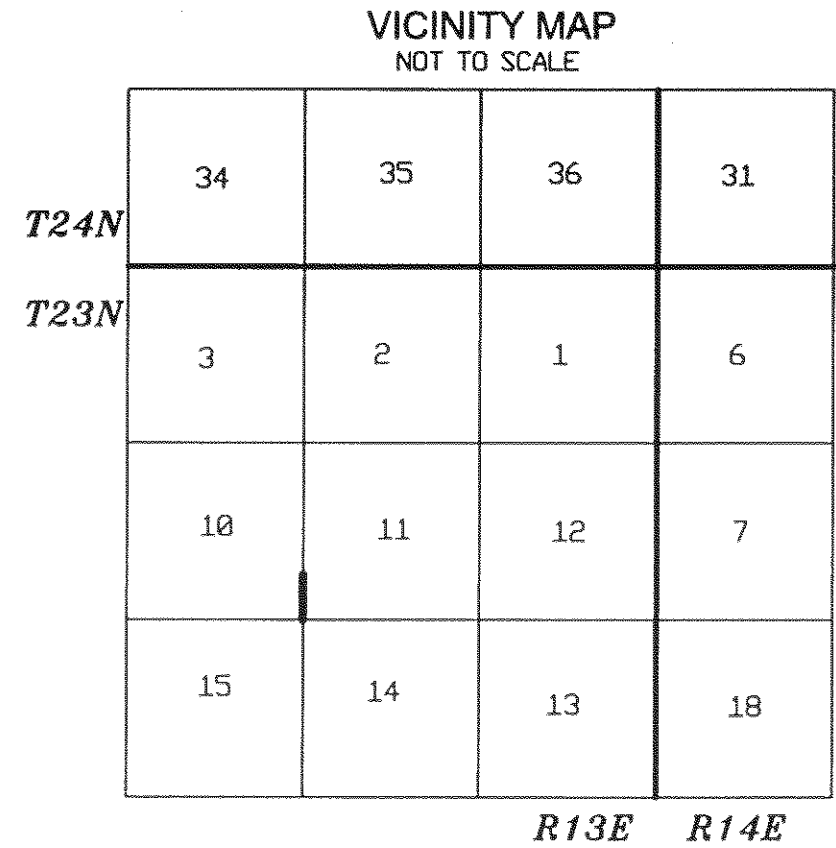
STATE PLANE COORDINATES CALIFORNIA - ZONE 1 1983		
$\theta = 0^\circ 51' 35.2''$ AT HPGN D CA 02 ES, (KS2012) MULTIPLY GRID DISTANCES BY 0.99983488 TO GET GROUND DISTANCES.		
CORNER #	NORTHING	EASTING
W 1/4 S34	1850822.801	6947119.137
SW S34	1848176.914	6949760.198
S 1/4 S34	1845225.120	6949760.198
SE 1/4 S34	1848244.815	6952413.016
MULTIPLY MEASURED DISTANCES BY 0.99983488 TO GET GROUND DISTANCES		

GENERAL NOTES
 A STANDARD UNITED STATES FOREST SERVICE (USFS) DRIVE-IN MONUMENT IS A 5/8" DIAMETER ALUMINUM ROD WITH A 3-1/4" ALUMINUM CAP EDGE-MARKED WITH THE USFS LOGO.
SURVEY HISTORY
 (R1) GENERAL LAND OFFICE NOTES (WM. MINTO 1880)

- LEGEND**
- ⊕ PRORATED CORNER POINT SEARCHED FOR ORIGINAL CORNER NOT FOUND
 - ⊠ FOUND BLM CORNER
 - FD CORNER AS NOTED
 - SET STANDARD U.S. FOREST SERVICE DRIVE-IN MONUMENT (BEARING TREES AS NOTED)
 - PROPERTY BOUNDARY MARKED AND POSTED

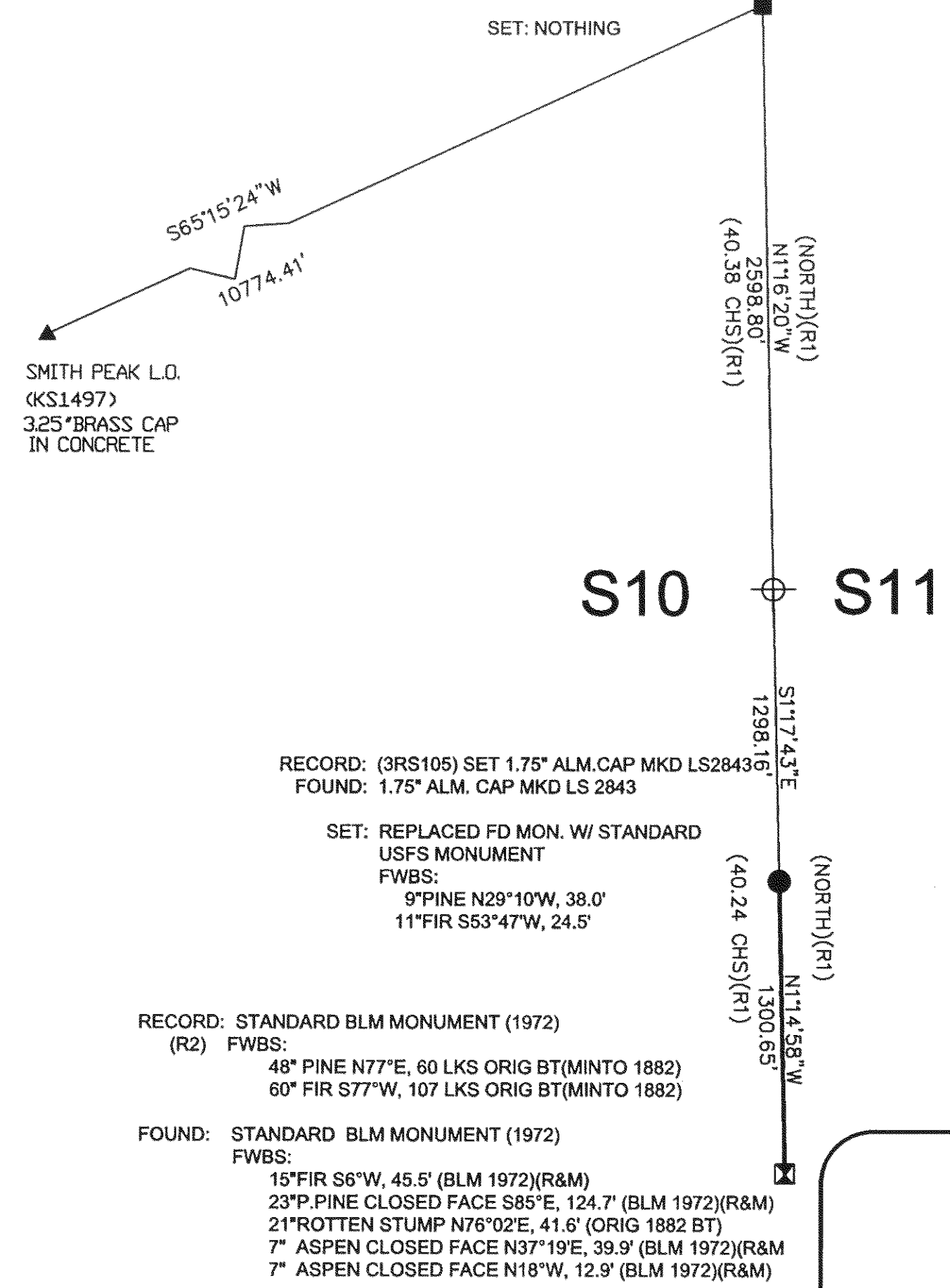


(R1) GLO WMMINTO (1882)
 (R2) BLM FIELD NOTES AND PLAT 1972
 RECORD: POST (R1) FWBS:
 60" PINE N44 1/2"E 233 LKS
 33" PINE S23°W 304 LKS
 FOUND: STANDARD DWR MONUMENT (2.5" BRASS CAP/1.75"IP)
 FWBS:
 70" PINE N45°E, 153.8'/CLOSED BLAZE (ORIG MINTO 1882)(R&M)
 ROTTEN PINE STUMP S23°W, 200.6' (ORIG MINTO 1882)(R&M)
 21" PINE N73°E, 42.3' (K-TAG LOCAL BT)



BASIS OF BEARINGS
 *MEASURED BEARINGS AND DISTANCES ARE GRID BASED ON THE CALIFORNIA COORDINATE SYSTEM OF 1983 (CCS83), ZONE 1.
 $\theta = 0^\circ 57' 18''$ AT THE NORTHEAST CORNER OF SECTION 10, MULTIPLY GRID DISTANCES BY 0.99973858 TO GET GROUND DISTANCES.

CONTROL WAS ESTABLISHED WITH G.P.S., TOPCON HIPER, DUAL FREQUENCY. CONTROL WAS ESTABLISHED USING THE FOLLOWING STATIONS:
 SMITH PEAK (KS1497) USGS BLAIRSDEN QUAD EPOCH DATE: 1991.35
 LATITUDE: $39^\circ 52' 02.49461''$ N 1838425.49 N
 LONGITUDE: $120^\circ 31' 49.76352''$ W 6974160.06 E
 DELL (KS1495) EPOCH DATE: MARCH 1994
 LATITUDE: $39^\circ 48' 03.87606''$ N 1814345.16 N
 LONGITUDE: $120^\circ 31' 02.12128''$ W 6978283.08 E
 LATITUDES AND LONGITUDES AS PUBLISHED BY NATIONAL GEODETIC SURVEYS (NGS).



RECORD: (3RS105) SET 1.75" ALM. CAP MKD LS2843
 FOUND: 1.75" ALM. CAP MKD LS 2843
 SET: REPLACED FD MON. W/ STANDARD USFS MONUMENT
 FWBS:
 9" PINE N29°10'W, 38.0'
 11" FIR S53°47'W, 24.5'
 RECORD: STANDARD BLM MONUMENT (1972) (R2) FWBS:
 48" PINE N77°E, 60 LKS ORIG BT(MINTO 1882)
 60" FIR S77°W, 107 LKS ORIG BT(MINTO 1882)
 FOUND: STANDARD BLM MONUMENT (1972) FWBS:
 15" FIR S6°W, 45.5' (BLM 1972)(R&M)
 23" P. PINE CLOSED FACE S85°E, 124.7' (BLM 1972)(R&M)
 21" ROTTEN STUMP N76°02'E, 41.6' (ORIG 1882 BT)
 7" ASPEN CLOSED FACE N37°19'E, 39.9' (BLM 1972)(R&M)
 7" ASPEN CLOSED FACE N18°W, 12.9' (BLM 1972)(R&M)

STATE PLANE COORDINATES CALIFORNIA - ZONE 1 1983		
$\theta = 0^\circ 57' 39.2''$ AT SMITH PEAK (KS1497), MULTIPLY GRID DISTANCES BY 0.99967202 TO GET GROUND DISTANCES.		
CORNER #	NORTHING	EASTING
SE S10	1837741.910	6984057.333
S 1/16 S10	1839039.742	6984027.992
NE S34	1842938.239	6983941.930
MULTIPLY MEASURED DISTANCES BY 0.99967202 TO GET GROUND DISTANCES		

GENERAL NOTES
 A STANDARD BUREAU OF LAND MANAGEMENT (BLM) MONUMENT IS A 2-1/2" DIAMETER STEEL PIPE, 28" LONG WITH A 3-1/2" BRASS CAP EDGE-MARKED WITH THE BLM LOGO.

RECORD OF SURVEY
 SECTION 11, T23N R13E, MDM & SECTION 34, T24N R12E, MDM, PLUMAS COUNTY, CALIFORNIA
 FOR
 U.S.D.A. PLUMAS NATIONAL FOREST
 P.O. BOX 11500, QUINCY, CA.
 DRAWN BY: B. SNOW DATE: OCTOBER, 2006