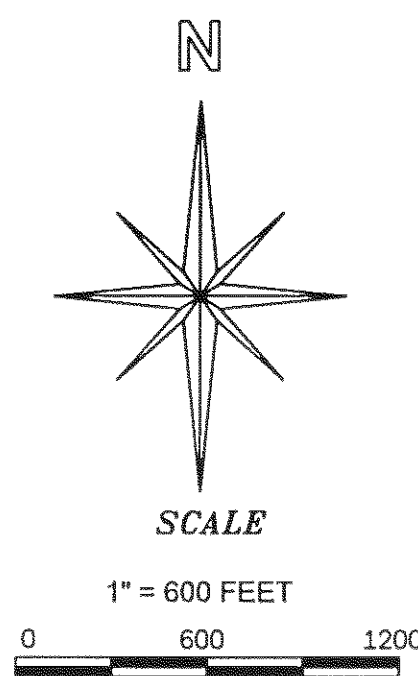
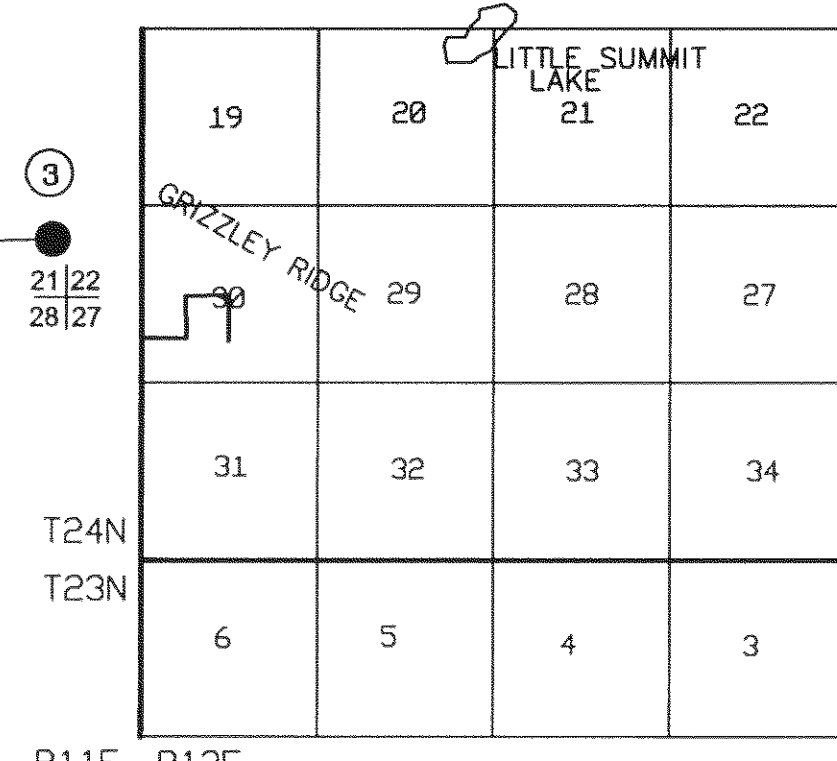


VICINITY MAP  
NOT TO SCALE



**BASIS OF BEARINGS**  
 \*MEASURED BEARINGS AND DISTANCES ARE GRID BASED ON THE CALIFORNIA COORDINATE SYSTEM OF 1983 (CCS83), ZONE 1.

φ = 0°35'35" AT HPGN D CA 02 ES, MULTIPLY GRID DISTANCES BY 1.000276 TO GET GROUND DISTANCES.

CONTROL WAS ESTABLISHED WITH G.P.S., TOPCON HIPER, DUAL FREQUENCY. CONTROL WAS ESTABLISHED USING THE FOLLOWING STATIONS:

\*HPGN D CA 02 ES (DF4390) EPOCH: MARCH, 2003  
 LATITUDE: 40°10'42.49563" N 1949611.19 N  
 LONGITUDE: 121°05'35.39575" W 6815050.79 E

\*HPGN CA 02 27 (KS2012) EPOCH: AUGUST 1996  
 LATITUDE: 39°51'14.41395" N 1832871.05 N  
 LONGITUDE: 120°41'06.40820" W 6930833.50 E

LATITUDES AND LONGITUDES AS PUBLISHED BY NATIONAL GEODETIC SURVEYS (NGS) IN JUNE 2001.

**GENERAL NOTES**

A STANDARD UNITED STATES FOREST SERVICE (USFS) DRIVE-IN MONUMENT IS A 5/8" DIAMETER ALUMINUM ROD WITH A 3-1/4" ALUMINUM CAP EDGE-MARKED WITH THE USFS LOGO.

A STANDARD BUREAU OF LAND MANAGEMENT (BLM) MONUMENT IS A 2-1/2" DIAMETER STEEL PIPE, 28" LONG WITH A 3-1/2" BRASS CAP EDGE-MARKED WITH THE BLM LOGO.

**SURVEY HISTORY**

(R1) GENERAL LAND OFFICE NOTES (Wm. Minto 1880)

**LEGEND**

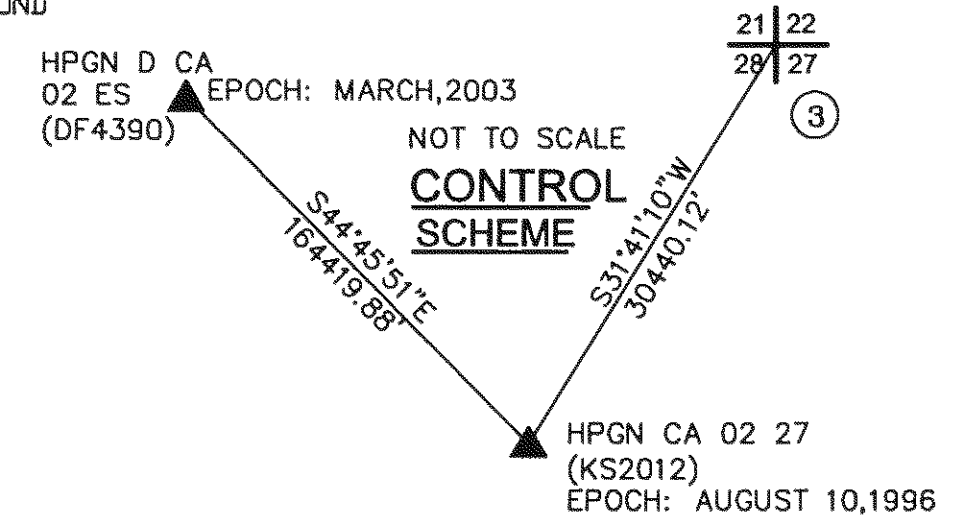
- ⊕ PRORATED CORNER POINT (NOTHING SET) SEARCH FOR ORIGINAL CORNER NOT FOUND
- ⊗ FOUND BLM CORNER
- ⑩ CORNER NOTE
- SET STANDARD U.S. FOREST SERVICE DRIVE-IN MONUMENT (BEARING TREES AS NOTED)
- PROPERTY BOUNDARY MARKED AND POSTED

STATE PLANE COORDINATES CALIFORNIA - ZONE 1 1983		
θ = 0°51'35" AT HPGN D CA 02 ES, MULTIPLY GRID DISTANCES BY 1.0001651 TO GET GROUND DISTANCES.		
CORNER #	NORTHING	EASTING
1	1858079.4251	6930871.8081
2	1863803.1515	6936093.8591
3	1858773.7044	6946822.6675
4	1852845.7317	6930964.1133
5	1850434.8832	6936202.5975
6	1853207.1234	6939050.9323

MULTIPLY MEASURED DISTANCES BY 1.0001651 TO GET GROUND DISTANCES

**SHEET INDEX**

SECTION 30, T24N R12E MDM	1 OF 7
SECTION 32, T24N R12E MDM	2 OF 7
SECTION 34, T24N R12E MDM	3 OF 7
SECTION 11, T23N R13E MDM	3 OF 7
SECTION 7, T24N R12E MDM	4 OF 7
M.S. 5495 T24N R12E MDM	5 OF 7
M.S. 5551 T24N R12E MDM	5 OF 7
M.S. 5582 T24N R12E MDM	5 OF 7
CORNER NOTES	6 OF 7
CORNER NOTES 2	7 OF 7



**SURVEYOR'S STATEMENT**

THIS MAP CORRECTLY REPRESENTS A SURVEY MADE BY ME OR UNDER MY DIRECTION IN CONFORMANCE WITH THE REQUIREMENTS OF THE PROFESSIONAL LAND SURVEYORS' ACT AT THE REQUEST OF PLUMAS NATIONAL FOREST IN JUNE 20, 2007.

*William G. Snow*  
 William G. Snow L.S. 5623  
 LICENSE EXP. DATE 12/31/08

**COUNTY SURVEYOR'S STATEMENT**

THIS MAP HAS BEEN EXAMINED IN ACCORDANCE WITH SECTION 8766 OF THE PROFESSIONAL LAND SURVEYORS' ON THIS 13<sup>th</sup> DAY OF July 20 07.

*R. Tom Hunter*  
 R. TOM HUNTER R.C.E. 30515  
 PLUMAS COUNTY SURVEYOR  
 LICENSE EXP. DATE 03/31/08

**RECORDER'S STATEMENT**

FILED THIS 19<sup>th</sup> DAY OF July 2007 AT 4:22 PM IN BOOK 14 OF RECORDS OF SURVEYS, AT PAGE 82-88 AT THE REQUEST OF THE COUNTY SURVEYOR.

FEE: \$20.00

KATHLEEN WILLIAMS  
 COUNTY RECORDER

DOC. No: 2007-0005875 BY: *Laura L. Davis*  
 DEPUTY

**RECORD OF SURVEY**

SECTIONS 30, 32, 34, T24N R12E, MDM  
 SECTION 11, T23N R13E, MDM,  
 PORTIONS M.S. 5495; 5551 & 5582 A&B; T24N R12E MDM  
 PLUMAS COUNTY, CALIFORNIA  
 FOR  
 U.S.D.A. PLUMAS NATIONAL FOREST  
 P.O. BOX 11500, QUINCY, CA.  
 DRAWN BY: B. SNOW DATE: NOVEMBER, 2006