

Record of Survey

Diamond Cadastral Survey Plumas National Forest

20 Sec. cor. 11, 12, 13 & 14, T27N, R11E

RECORD OF ORIGINAL CORNER:

Original corner set by A.A. Smith, under GLO Contract dated April 16, 1880, approved January 27, 1881.
Record states
Set post, 4 ins. sq., 1 foot in earth 1 foot above stone mound 4 1/4 ft. in dia. at base by 2 ft. in height, for corner to section 11, 12, 13, 14;
From which
Fir 34 ins. dia., S. 68° E., 68 lks. dist.
Pine, 38 ins. dia., N. 49° E., 89 lks. dist.
Cedar, 6 ins. dia., S. 35° W., 115 lks. dist.
Fir, 5 ins. dia., N. 53 1/2° W., 139 lks. dist.

DESCRIPTION OF CORNER EVIDENCE FOUND:

Found a NOT OF RECORD 1 in. diam. iron pipe, with brass washer in top mkd. LS 4655, projecting 1 in. abv. gnd. in embedded rock collar. From which original bearing trees
A pine, 59 ins. diam., alive and healthy, bears N. 49° E., 89 lks. dist., with healed blaze.
A rotted fir stump, 50 ins. diam., bears S. 68° E., 68 lks. dist., with healed blaze.
and bearing trees NOT OF RECORD
A 8 ft. tall fir snag, 14 ins. diam., bears S. 69° E., 11.5 ft. dist., with open blaze and T27N R11E S13 BT mks. visible.
A 8 ft. tall fir snag, 15 ins. diam., bears S. 52° W., 26.4 ft. dist., with open blaze and T27N R11E S14 BT mks. visible.
A fir, 15 ins. diam., alive and healthy, bears N. 73° W., 8.4 ft. dist., with healed blaze.

DESCRIPTION OF MONUMENT AND ACCESSORIES ESTABLISHED TO PERPETUATE LOCATION OF THIS CORNER:

At the position determined by the original bearing trees, occupied by the NOT OF RECORD iron pipe, I remove the iron pipe and set a standard USDA Forest Service 3/4 ins. diam. alum. cap on 3/4 in. diam. by 30 ins. long alum. drive rod, buried 26 ins. in the gnd., with magnet in 9 ins. long break-away base, in rock collar, mkd. as shown
New bearing trees
A Douglas fir, 11 ins. diam., bears S. 33° E., 59.8 ft. dist., mkd. T27N R11E S13 BT.
A Douglas fir, 14 ins. diam., bears S. 71° W., 62.3 ft. dist., mkd. T27N R11E S14 BT.



State Plane Coordinates of corner position, CA Zone 1, NAD83 (CORS96)
N = 1960995.47 sft. E = 6924846.71 sft.

24 Sec. cor. 7, 12, 13 & 18, T27N, Rs11 & 12E

RECORD OF ORIGINAL CORNER:

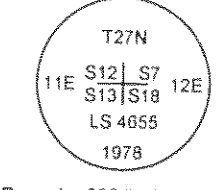
Original corner set by James Barnham, under GLO Contract dated July 25, 1878, with Plat approval date of January 27, 1881, and no approval date for the Contract or Field Notes available from the BLM.
Record states
Set a granite stone 18 x 14 x 6 in a stone mound for Cor. to Secs. 7, 12, 13 & 18
From which
Pine 24 ins. dia., S. 42° E., 53 lks. dist.
Fir 32 ins. dia., S. 18° W., 76 lks. dist.
Pine 60 ins. dia., N. 87° W., 8 lks. dist.
Pine, 20 ins. dia., N. 63° E., 200 lks. dist.

Subsequent Monumentation:

This corner was remonumented by Louis A. Vonderscheer, LS 4655, during survey recorded July 30, 1979, in Plumas County Record of Surveys Book 5, page 55 (5-RS-55), and amended and superseded by survey recorded January 10, 1980, in Plumas County Record of Surveys Book 5, page 89 (5-RS-89).
Record states
Found 18 x 14 x 6 marked stone
Set U.S.F.S. monument
Found G.L.O. B.T.s
47° Y. pine N. 63° E. 134.2 (132.0)
55° Y. pine snag N. 87° W. 5.3'
Fir remains S. 18° W. 50.2±
42° Y. pine S. 42° E. 35.0'
scribed 12" W. fir S. 70° W. 13.9'
scribed 15" W. fir N. 51° W. 17.4'

DESCRIPTION OF CORNER EVIDENCE FOUND:

Found a standard USDA Forest Service 3 ins. diam. brass cap on 2 1/2 ins. diam. iron post, firmly set in good condition, 3 ins. abv. gnd., in rock collar, brass cap mkd. as shown,



from which original bearing trees
A pine, 50 ins. diam., alive and healthy, bears N. 63° E., 203 lks. dist., with healed blaze (Record = 200 lks.).
A pine, 44 ins. diam., alive and healthy, bears S. 42° E., 53 lks. dist., with healed blaze.
and bearing trees mkd. by Vonderscheer
A fir, 16 ins. diam., alive and healthy, bears S. 70° W., 13.9 ft. dist., with healed blaze.
A 12 ft. tall fir snag, 19 ins. diam., bears N. 51° W., 17.4 ft. dist., with open blaze and T27N R11E S12 BT mks. visible.

DESCRIPTION OF MONUMENT AND ACCESSORIES ESTABLISHED TO PERPETUATE LOCATION OF THIS CORNER:

New bearing tree
A pine, 23 ins. diam., bears N. 41 1/2° W., 50.5 ft. dist., mkd. T27N R11E S12 BT.

State Plane Coordinates of corner position, CA Zone 1, NAD83 (CORS96)
N = 1961114.33 sft. E = 6930001.78 sft.

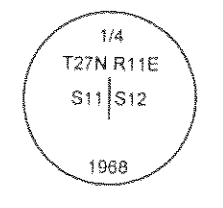
22 1/4 sec. cor. of secs. 11 and 12, T27N, R11E

RECORD OF ORIGINAL CORNER:

Original corner set by A.A. Smith, under GLO Contract dated April 16, 1880, approved January 27, 1881.
Record states
Set post, 4 ins. sq., 1 foot in earth 1 foot above stone mound 4 ft. in dia. at base by 2 ft. in height, for quarter section corner;
from which
Fir 22 ins. dia., N. 34° W., 11 lks. dist.
Fir, 20 ins. dia., S. 34° E., 17 lks. dist.

Subsequent Monumentation

This corner was remonumented by Adam Sydlík, cadastral surveyor, under Group No. 540, approved May 16, 1977
Record states:
The 1/4 sec. cor. of secs. 11 and 12, monumented by an old embedded mound of stone, 2 1/2 ft. diam., 6 ins. high, from which the remains of the original bearing trees
A fir stump hole, bears S. 37° E., 17 lks. dist. (Record: S. 34° E.).
A fir snag, 33 ins. diam., bears N. 37° W., 12 1/2 lks. dist., with overgrown blaze (Record: N. 34° W., 11 lks. dist.).
At the corner point
Set an iron post, 28 ins. long, 2 1/2 ins. diam., 20 ins. in the ground, with brass cap mkd.
from which
A white fir, 11 ins. diam., bears S. 38° E., 72 lks. dist., mkd. 1/4 S12 BT.
A sugar pine, 9 ins. diam., bears N. 7° W., 26 lks. dist., mkd. 1/4 S11 BT.
Rebuild the mound of stone, 2 1/2 ft. base, around post to top.



DESCRIPTION OF CORNER EVIDENCE FOUND:

Found a standard BLM 3/4 ins. diam. brass cap on 2 1/2 ins. diam. iron post, firmly set in good condition, 3 ins. abv. gnd. in rock collar, 2 ft. diam. to top, mkd. as shown abv. From which the bearing trees mkd. by Sydlík
A white fir, 18 ins. diam., alive and healthy, bears S. 38° E., 72 lks. dist., with healed blaze.
A sugar pine, 16 ins. diam., alive and healthy, bears N. 7° W., 26 lks. dist., with healed blaze.

DESCRIPTION OF MONUMENT AND ACCESSORIES ESTABLISHED TO PERPETUATE LOCATION OF THIS CORNER:

n/a
State Plane Coordinates of corner position, CA Zone 1, NAD83 (CORS96)
N = 1963642.93 sft. E = 6924904.75 sft.

23 1/4 sec. cor. of secs. 12 & 13, T27N, R11E

RECORD OF ORIGINAL CORNER:

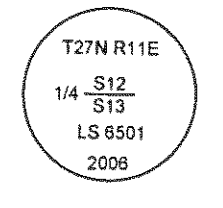
Original corner set by A.A. Smith, under GLO Contract dated April 16, 1880, approved January 27, 1881.
Record states
Set post, 4 ins. sq., 1 foot in earth 1 foot above stone mound 4 ft. in dia. at base by 2 ft. in height, for quarter section corner;
from which
Fir, 9 ins. dia., N. 17° E., 63 lks. dist.
Fir, 12 ins. dia., S. 24° W., 41 lks. dist.

DESCRIPTION OF CORNER EVIDENCE FOUND:

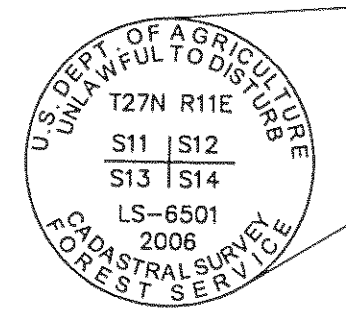
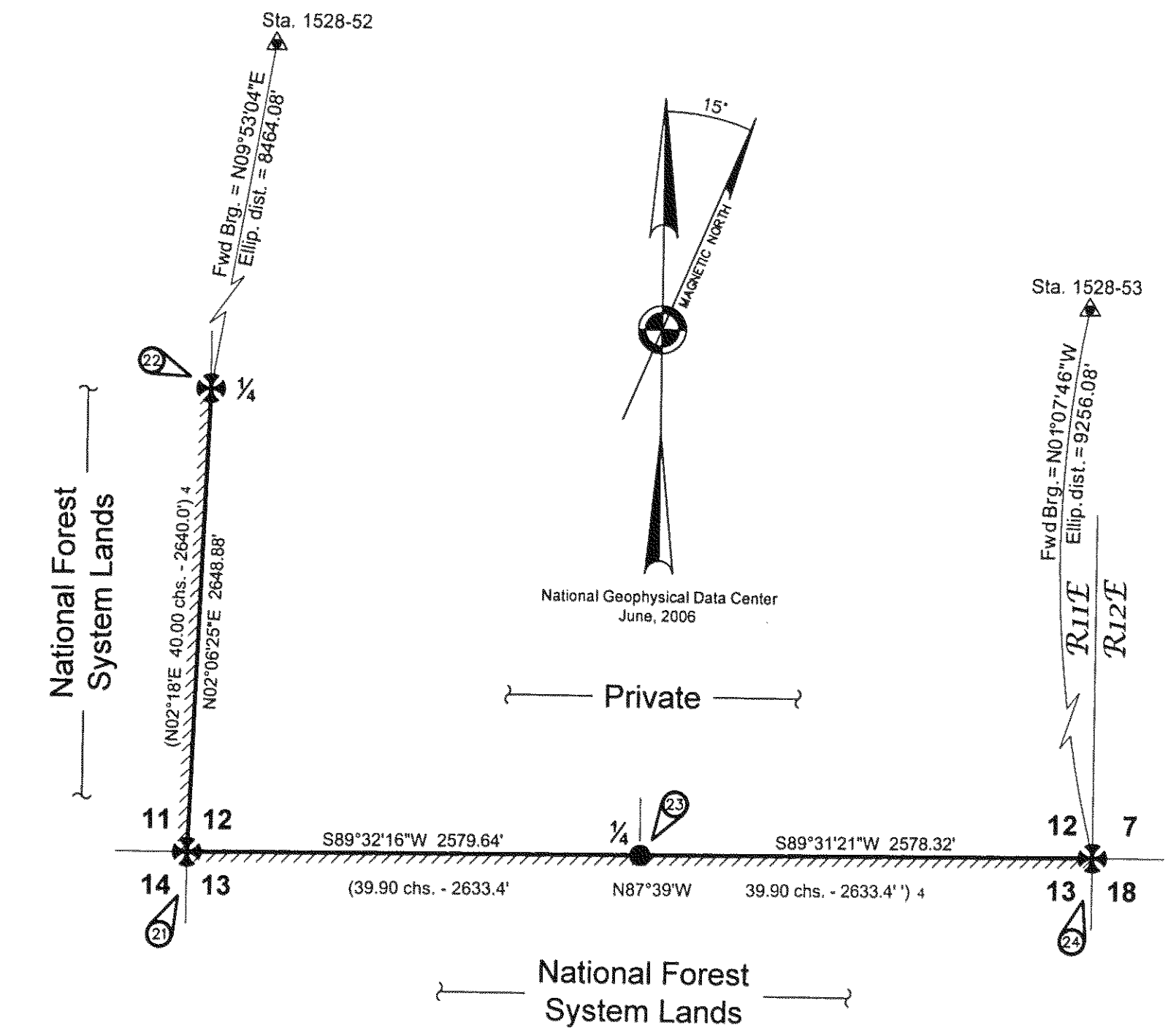
Found a NOT OF RECORD 1 in. diam. iron pipe, with brass washer in top mkd. LS 4655, projecting 1 in. abv. gnd. in embedded rock collar. From which possible remains of an original bearing tree
A fir stump, 56 ins. diam., bears N. 23° E., 63 lks. dist. (Record = N. 17° E.).
and bearing trees NOT OF RECORD
A cedar, 11 ins. diam., alive and healthy, bears S. 68° E., 2.4 ft. dist., with healed blaze. This tree was high stumped during survey, and attached a BT sign to top.
A fir, 11 ins. diam., alive and healthy, bears N. 29° W., 35.4 ft. dist., with healed blaze.
The NOT OF RECORD iron pipe is within 0.75 ft. of the proportionate position and I accept it as the best available evidence of the original corner position.

DESCRIPTION OF MONUMENT AND ACCESSORIES ESTABLISHED TO PERPETUATE LOCATION OF THIS CORNER:

I remove the NOT OF RECORD iron pipe and replace it with a standard USDA Forest Service 3/4 ins. diam. alum. cap on 3/4 in. diam. by 30 ins. long alum. drive rod, buried 28 ins. in the gnd., with magnet in 9 ins. long break-away base, in rock collar, mkd. as shown
New bearing tree
A fir, 19 ins. diam., bears S. 86° W., 22.8 ft. dist., mkd. 1/4 S13 BT.



State Plane Coordinates of corner position, CA Zone 1, NAD83 (CORS96)
N = 1961054.57 sft. E = 6927424.91 sft.



Typical Cap Markings on remonumentations and new monuments (Not to Scale)

LEGEND

- ⊗ Cadastral monument of record recovered this survey. See individual corner record for description of found condition and any refurbishment or remonumentation.
- Corner monument NOT OF RECORD recovered and position accepted by this survey. See individual corner record for description of found condition and any refurbishment or remonumentation.
- ⊗ Cadastral monument of record not recovered this survey.
- () Record informational calls from GLO Contract surveyed by A.A. Smith, dated April 16, 1880, approved January 27, 1881.
- ==== Survey line Posted - USFS signs (///// NFSL side) and Blazed.
- ▲ Wallowa Associates GPS control point.
- ③ Reference to descriptions of corners shown hereon are on sheet 5.

NARRATIVE

History:

The exterior boundary of Township 27 North, Range 11 East, MDM, CA, was originally surveyed by James Barnham, under GLO Contract dated July 25, 1878, with Plat approval date of January 27, 1881, and no approval date for the Contract or Field Notes available from the BLM.

The original subdivision of Township 27 North, Range 11 East, MDM, CA, was surveyed by A.A. Smith, under GLO Contract dated April 16, 1880, approved January 27, 1881.

Certain corners in T27N, R11E, were remonumented by Adam Sydlík, Cadastral Surveyor, under Group No. 540, approved May 16, 1977.

The east boundary of sec. 12 was resurveyed by Louis A. Vonderscheer, LS 4655, in 1979, and recorded with the Plumas County Surveyor as 5-RS-89. In 1980 this survey was amended and superseded by 5-RS-89.

Procedure:

A 1 in. diam. iron pipe, with brass tag stamped "LS 4655" inserted in top, flush with top of rock collar, 2 ft. diam. by 6 ins. high, and two bearing trees, ALL NOT OF RECORD, was recovered within 0.8 ft. of the calculated position for the 1/4 cor. of secs. 12 and 13, T27N, R11E. The recovered alum. tags on the bearing trees are dated 1987. The found monumented position is accepted by this survey.

The positions of all recovered monuments shown hereon were accepted as undisturbed, except by the ravages of time, unless noted otherwise in the corner descriptions.

REFERENCE MATERIAL

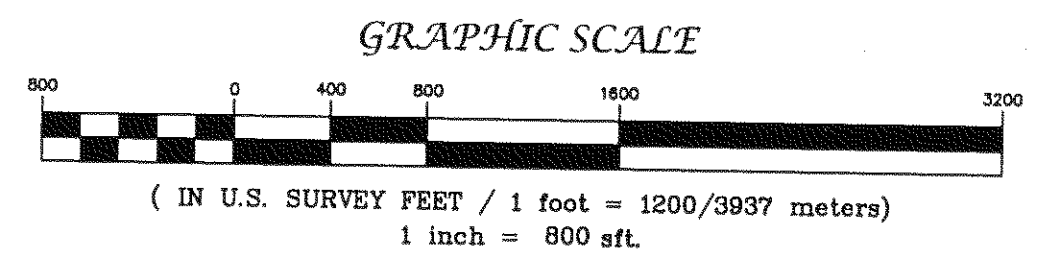
- Deed References:
U.S. Patent 04-88-0004 (Plumas = Vol. 471, Pg. 499)
U.S. Patent 04-93-0040 (Plumas = Bk. 603, Pg. 401)
Book 603, Page 749
Book 605, Page 671
Book 661, Page 463

- County Surveys:
5-RS-55 (1979)
5-RS-89 (1980) (supercedes 5-RS-55)

- Other Material:
 - GLO Field Notes and Plat of Contract surveyed by James Barnham, dated July 25, 1878. See Narrative for Plat approval dates.
 - GLO Field Notes and Plat of Contract surveyed by A.A. Smith, dated April 16, 1880, approved January 27, 1881.
 - BLM Field Notes of Group No. 540, Remonumentation of Certain Corners, by Adam Sydlík, approved May 16, 1977.
 - BLM Master Title Plats (MTPs) and Historical Indices.
 - Monument Records filed with the Plumas County Surveyor.
 - Corner cards supplied by the Plumas National Forest.
 - No Title Report was supplied or utilized in support of this survey.

NOTES

(See NOTES on Sheet 3)



Diamond Cadastral Survey Plumas National Forest		
LOCATED WITHIN Section 12 Township 27 North, Range 11 East, Mount Diablo Meridian, California		
⊗ Wallowa Associates 303 S.E. Alamo Street Enterprise, Oregon 97828 (541) 426-9049		
SCALE 1" = 800'	SHEET No. 5 of 9	DATE OF SURVEY Beginning: May, 2006 Ending: November, 2006
DRAWN BY RCW	CHECKED RCW	PROJECT No. WA G401-02/1528
DATE 3/07		