

Record of Survey

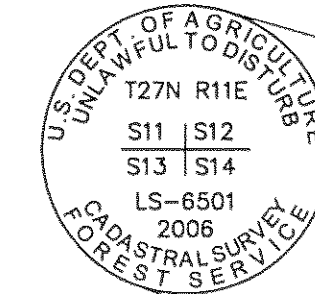
Diamond Cadastral Survey

Plumas National Forest

NOTES

(See **NOTES** on Sheet 3)

LEGEND



Typical Cap Markings on remonumentations and new monuments (Not to Scale)

- ⊗ Cadastral monument of record recovered this survey. See individual corner record for description of found condition and any refurbishment or remonumentation.
- Corner monument **NOT OF RECORD** recovered and position accepted by this survey. See individual corner record for description of found condition and any refurbishment or remonumentation.
- Positioned in compliance with the BLM Manual of Survey Instructions, 1973 at proportionate positions and intersection points. Set a 3/4" diam. alum. cap on 3/4" diam. by 30" long alum. drive rod, with magnet in 9 ins. long break-away base, or a 3/4" diam. alum. cap on 2 1/2" diam. by 30" long alum. post with clear DEEP-1 magnet at base. See individual corner record for complete description.
- ⊗ Cadastral monument of record not recovered this survey.
- () Record informational calls from GLO Contract surveyed by A.A. Smith, dated September 18, 1876, approved January 1, 1878.
- () Record informational calls from Plumas County Survey 5-RS-89 (1980).
- ==== Survey line Posted - USFS signs (/ / / / NFSL side) and Blazed.
- ▲ Wallowa Associates GPS control point.
- ③ Reference to descriptions of corners shown hereon are on sheets 2 to 4.

① Sec. cor. 1, 6, 31 & 36, Tps 27 & 28N, Rs 11 & 12E

RECORD OF ORIGINAL CORNER:

Original corner set by A.A. Smith, under GLO Contract dated September 18, 1876, approved January 18, 1878. Record states:
 Set a pine post 72 x 6 x 6 in a stone monument, for corner to townships 27 & 28, north ranges 11 and 12 East. From which:
 Yellow pine 26 ins. diameter bears N. 42 1/2° E. 110 lks. dist.
 Yellow pine 24 ins. diameter bears N. 33° W. 154 lks. dist.
 Yellow pine 30 ins. diameter bears S. 8 1/4° E. 89 lks. dist.
 Cedar 26 ins. diameter bears S. 22 1/4° W. 79 links dist.

Subsequent Monumentation:

This corner was remonumented by Adam Sydlík, cadastral surveyor, under Group No. 540, approved May 16, 1977. Record states: The corner of Tps. 27 and 28 N., Rs. 11 and 12 E., monumented by an old embedded mound of stone, 2 1/2 ft. diam., 6 ins. high. From which the remains of the original bearing trees:
 A pine stump hole, bears S. 8 1/4° E., 89 lks. dist., with log alongside, with illegible scribe marks visible on old blaze.
 A Cedar, 39 ins. diam., bears S. 68° W., 79 lks. dist., with overgrown blaze. (Record: S. 22 1/4° W.)
 A sawed pine stump, 27 ins. diam., bears N. 20° W., 156 lks. dist., with log alongside with old blaze. (Record: N. 33° W., 154 lks. dist.)
 At the corner point:
 Set an iron post, 28 ins. long, 2 1/2 ins. diam., 18 ins. in the ground, with brass cap mkd. From which:
 A yellow pine, 15 ins. diam., bears N. 30° E., 32 lks. dist., mkd. T28N R12E S31 BT.
 A cedar, 7 ins. diam., bears S. 53 1/2° E., 62 lks. dist., mkd. T27N R12E S6 BT.
 A cedar, 5 ins. diam., bears N. 55 1/2° W., 25 lks. dist., mkd. S36 BT.
 Rebuild mound of stone, 3 ft. base, around post to top.

This corner was recovered and is shown and described on Plumas County Record of Surveys in Book 5, page 89 and Book 7, page 112.

DESCRIPTION OF CORNER EVIDENCE FOUND:

Area has been extensively and repeatedly logged with nearby access road and skid trails throughout. Found a standard BLM 3/4 ins. diam. brass cap on 2 1/2 ins. diam. iron post, firmly set in good condition, 4 ins. abv. gnd in rock collar, 2 ft. diam. to top, mkd. as shown abv. From which an original bearing tree:
 A cedar, 41 ins. diam., alive and healthy, bears S. 68° W., 79 lks. dist., with healed blaze. (1878 Record: S. 22 1/4° W.) and the bearing trees mkd. by Sydlík:
 A ponderosa pine, 17 ins. diam., alive and healthy, bears at record (N. 30° E., 32 lks. dist.), with healed blaze.
 A stump hole, indeterminate size and species, bears at record (S. 53 1/2° E., 62 lks. dist.).
 A cedar, 7 ins. diam., alive and healthy, bears at record (N. 55 1/2° W., 25 lks. dist.), with healed blaze.

DESCRIPTION OF MONUMENT AND ACCESSORIES ESTABLISHED TO PERPETUATE LOCATION OF THIS CORNER:

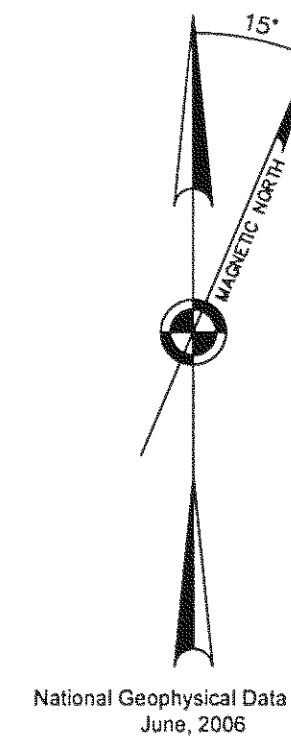
New bearing tree:
 A cedar, 8 ins. diam., bears S. 59° E., 41.4 ft. dist., mkd: T27N R11E S6 BT.
 State Plane Coordinates of corner position, CA Zone 1, NAD83 (CORS96):
 N = 1972060.52 sft. E = 6930292.67 sft.

REFERENCE MATERIAL

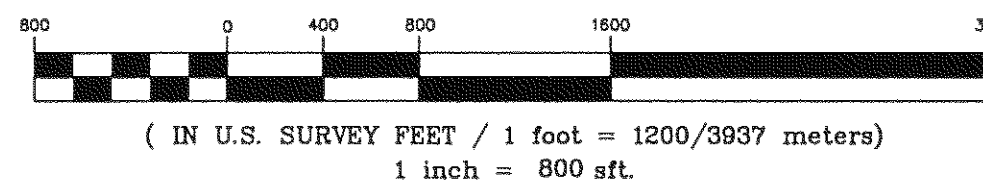
Deed References:
 Volume 196, Page 70

County Surveys:
 5-RS-55 (1979)
 5-RS-89 (1980)(supercedes 5-RS-55)
 5-RS-116 (1980)
 7-RS-112 (1987)

Other Material:
 • GLO Field Notes and Plat of Contract surveyed by A.A. Smith, dated September 18, 1876, approved January 1, 1878.
 • BLM Field Notes of Group No. 540, Remonumentation of Certain Corners, by Adam Sydlík, approved May 16, 1977.
 • BLM Master Title Plats (MTPs) and Historical Indices.
 • Monument Records filed with the Plumas County Surveyor.
 • Corner cards supplied by the Plumas National Forest.
 • No Title Report was supplied or utilized in support of this survey.

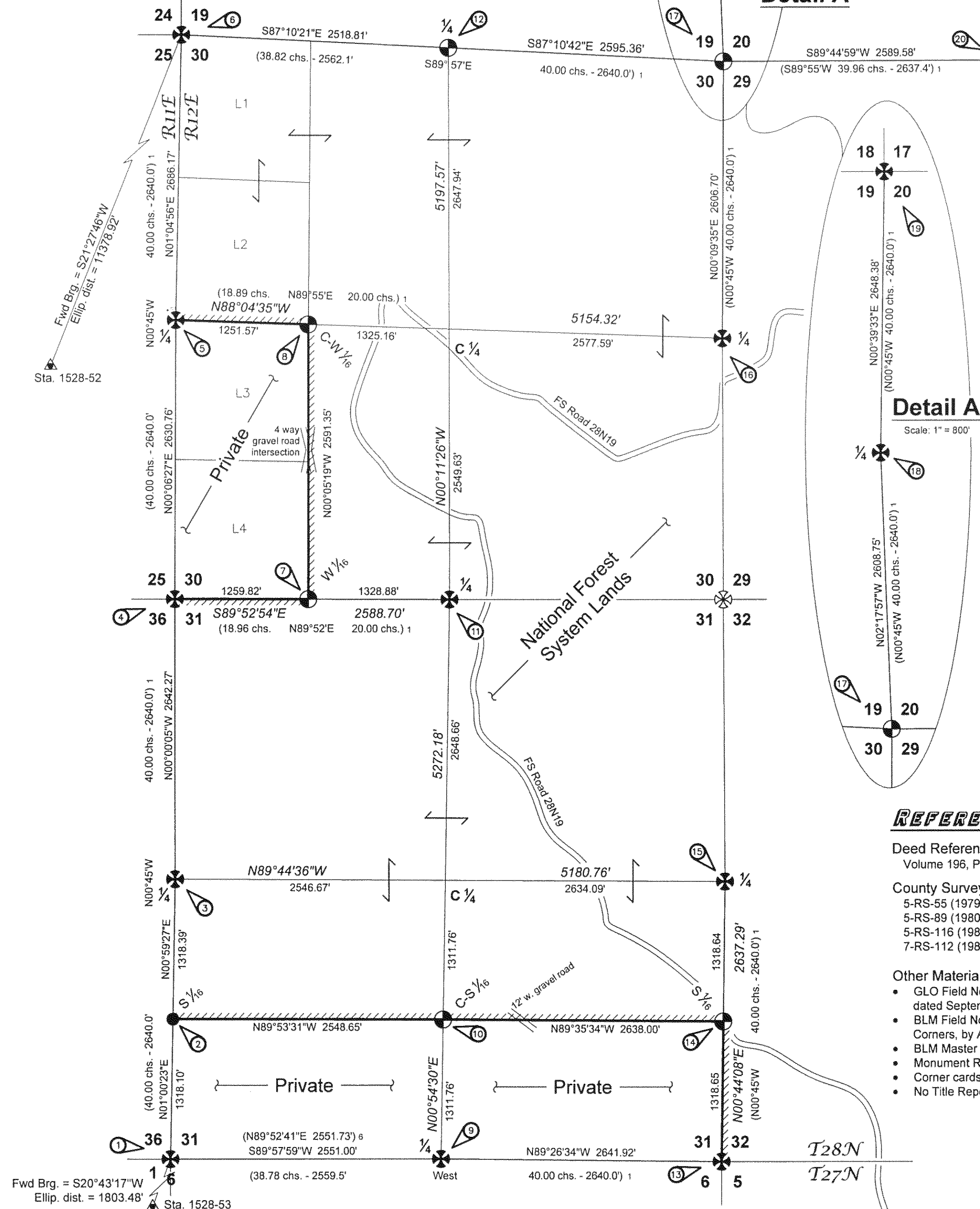


GRAPHIC SCALE



See Detail A

Detail A
Scale: 1" = 800'



NARRATIVE

History:

The exterior boundary and subdivision of Township 28 North, Range 12 East, MDM, CA, was originally surveyed by A.A. Smith, under Contract dated September 18, 1876, approved January 18, 1878.

Certain corners along the west exterior of T28N, R12E, were remonumented by Adam Sydlík, Cadastral Surveyor, under Group No. 540, approved May 16, 1977.

The west half-mile of the south boundary of sec. 31 was resurveyed by Louis A. Vonderscheer, LS 4655, in 1979, and filed with the County Surveyor as 5-RS-55. In 1980 this survey was amended and superseded by 5-RS-89.

The southeast cor. of sec. 31 was remonumented by Louis A. Vonderscheer, LS 4655, in 1980, and filed with the Plumas County surveyor as 5-RS-116.

Procedure:

The proportionate position of the sec. cor. of secs. 19, 20, 29 and 30, and the 1/4 cor. of sec. 19 and 30 were calculated with benefit of BLM's Cadastral Measurement Management (CMM) software. CMM correctly proportions by cardinal equivalents and along true mean bearings. The apparent bearing break at said 1/4 cor. is the result of converting to the local plane projection shown hereon.

A standard U.S. Forest Service monument and two bearing trees, ALL NOT OF RECORD, was recovered within 0.3 ft. of the calculated position for the S1/16 cor. of secs. 31 and 36, T28N, Rs 11 & 12E. The recovered monument was marked as appropriate for said 1/16 cor. and had a date of 1986. The found monumented position is accepted by this survey.

The positions of all recovered monuments shown hereon were accepted as undisturbed, except by the ravages of time, unless noted otherwise in the corner descriptions.

The road(s) shown hereon are for informational purposes only, reflect no claim as to legal status, and, except where tied by survey when crossing a posted line, were digitized from a U.S.G.S. Quadrangle.

Diamond Cadastral Survey Plumas National Forest		
LOCATED WITHIN Sections 30 and 31 Township 28 North, Range 12 East, Mount Diablo Meridian, California		
⊗ Wallowa Associates 303 S.E. Alamo Street Enterprise, Oregon 97828 (541) 426-9049		
SCALE 1" = 800'	SHEET No. 2 of 9	DATE OF SURVEY Beginning: May, 2006 Ending: November, 2006
DRAWN BY RCW	CHECKED RCW	PROJECT No. WA G401-02/1528
DATE 3/07		