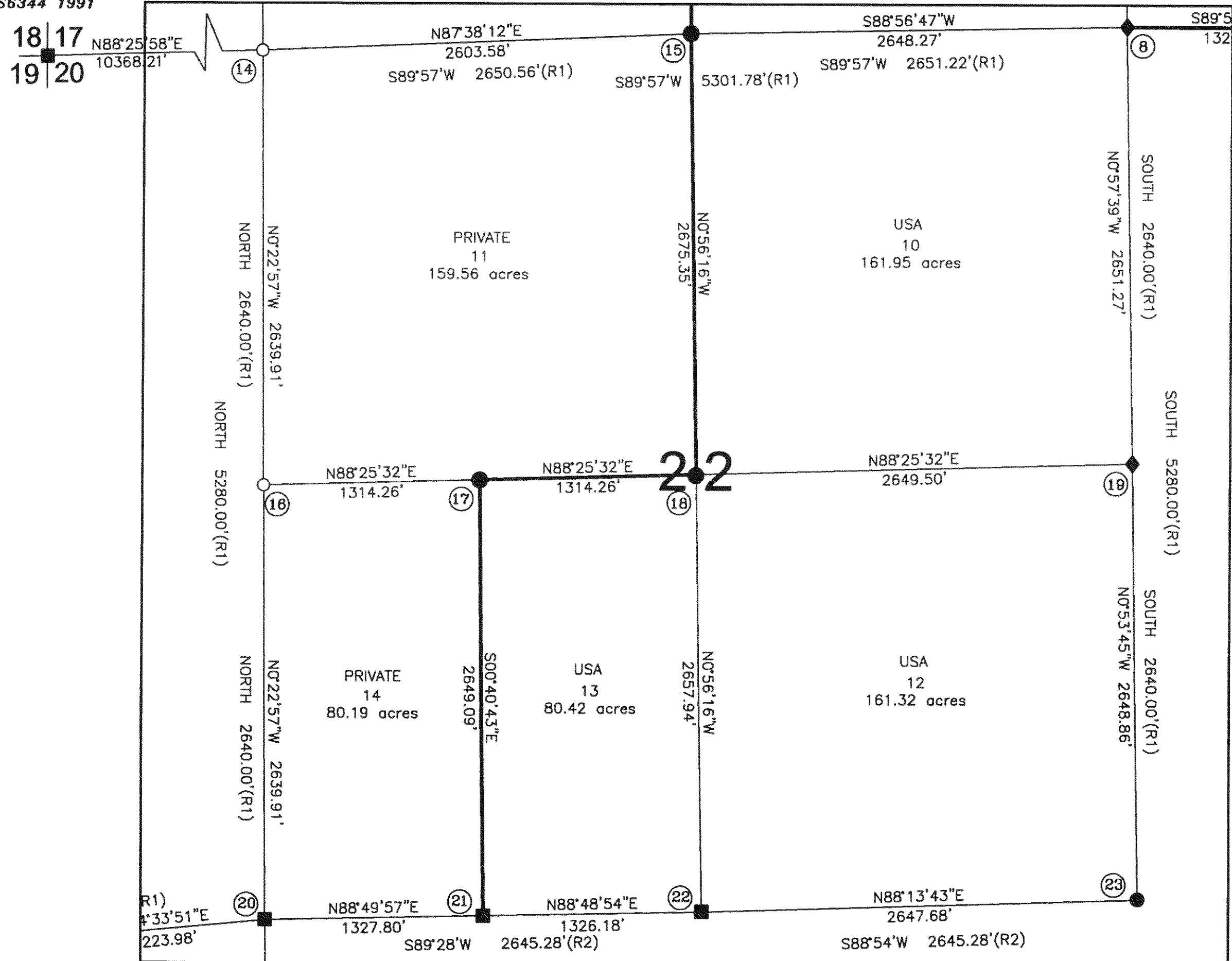
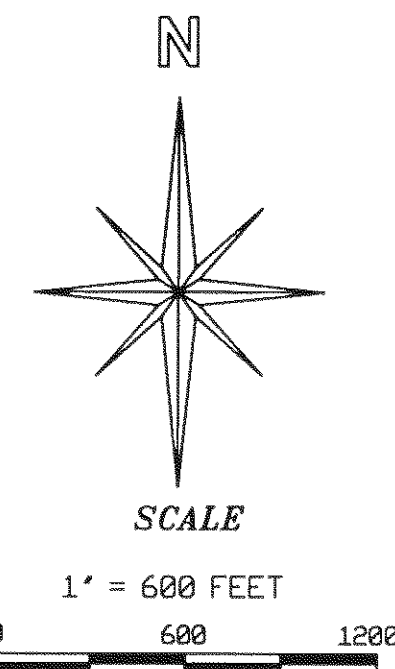
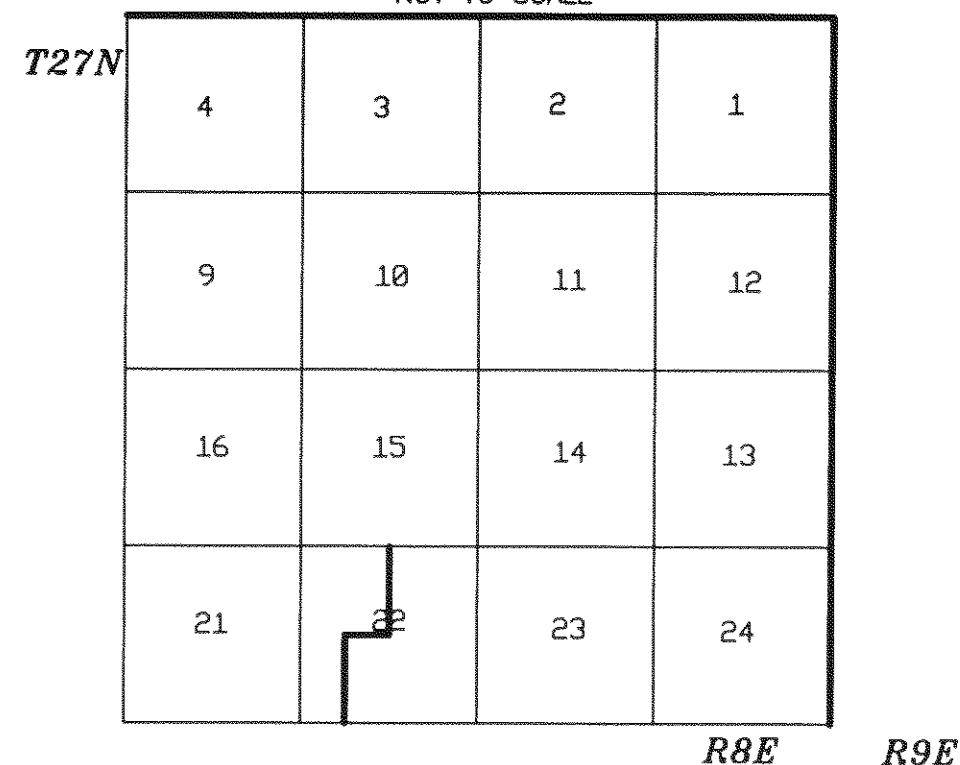


FD USFS MONUMENT
 MARKED AS PER 1973 MANUAL
 LS6344 1991



T28N VICINITY MAP
 NOT TO SCALE



BASIS OF BEARINGS
 SEE SHEET 1 OF 5

GENERAL NOTES

A STANDARD UNITED STATES FOREST SERVICE (USFS) DRIVE-IN MONUMENT IS A 5/8" DIAMETER ALUMINUM ROD WITH A 3-1/4" ALUMINUM CAP EDGE - MARKED WITH THE USFS LOGO.

ALL CORNERS SET ON THIS SURVEY WERE STANDARD UNITED STATES FOREST SERVICE (USFS) DRIVE-IN MONUMENTS A 5/8" DIAMETER ALUMINUM ROD 30" LONG WITH A 3-1/4" ALUMINUM CAP EDGE-MARKED WITH THE USFS LOGO. ALL CAPS WERE STAMPED AS PER THE 1973 BLM MANUAL OF INSTRUCTIONS AND ALL BEARING TREES WERE ALSO SCRIBED AS PER THE MANUAL.

SURVEY HISTORY

- R1 GENERAL LAND OFFICE NOTES (PUBLIC LAND SURVEYS) J.M. INGALES 1860
- R2 GENERAL LAND OFFICE NOTES (PUBLIC LAND SURVEYS) VICTOR S. BARBER 1904

LEGEND

- CORNER POINT - NOTHING SET
- ◆ FOUND COLLINS ALMANOR FOREST (CAF) CORNER
- FOUND USFS CORNER
- ⑩ CORNER NOTE
- SET STANDARD U.S. FOREST SERVICE DRIVE-IN MONUMENT (BEARING TREES AS NOTED)LS5623
- PROPERTY BOUNDARY MARKED AND POSTED

STATE PLANE COORDINATES CALIFORNIA - ZONE 1 1983		
θ = 0°35'35" AT HPGN D CA 02 ES, MULTIPLY GRID DISTANCES BY 1.000276 TO GET GROUND DISTANCES		
CORNER #	NORTHING	EASTING
16	1,951,631.3154	6,818,702.2536
22	1,949,045.9474	6,821,373.2918
19	1,951,776.3210	6,823,978.2849
23	1,949,127.7854	6,824,019.7022
20	1,948,991.4659	6,818,719.8737
MULTIPLY MEASURED DISTANCES BY 1.000276 TO GET GROUND DISTANCES		

RECORD OF SURVEY
 SECTION 22, T27N R8E, MDM,
 PLUMAS COUNTY, CALIFORNIA
 FOR
 U.S.D.A. PLUMAS NATIONAL FOREST
 P.O. BOX 11500, QUINCY, CA.
 DRAWN BY: BILL SNOW DATE: OCTOBER, 2006