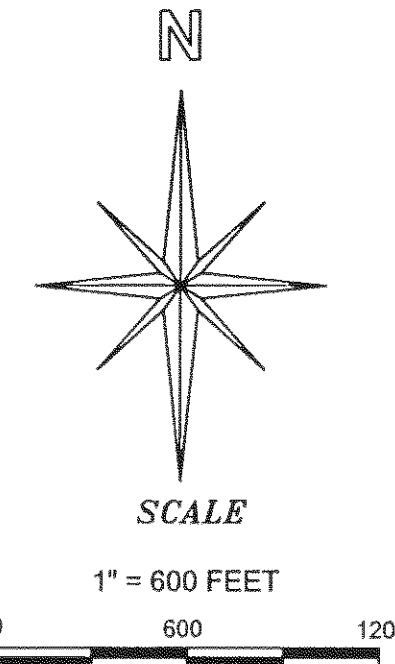
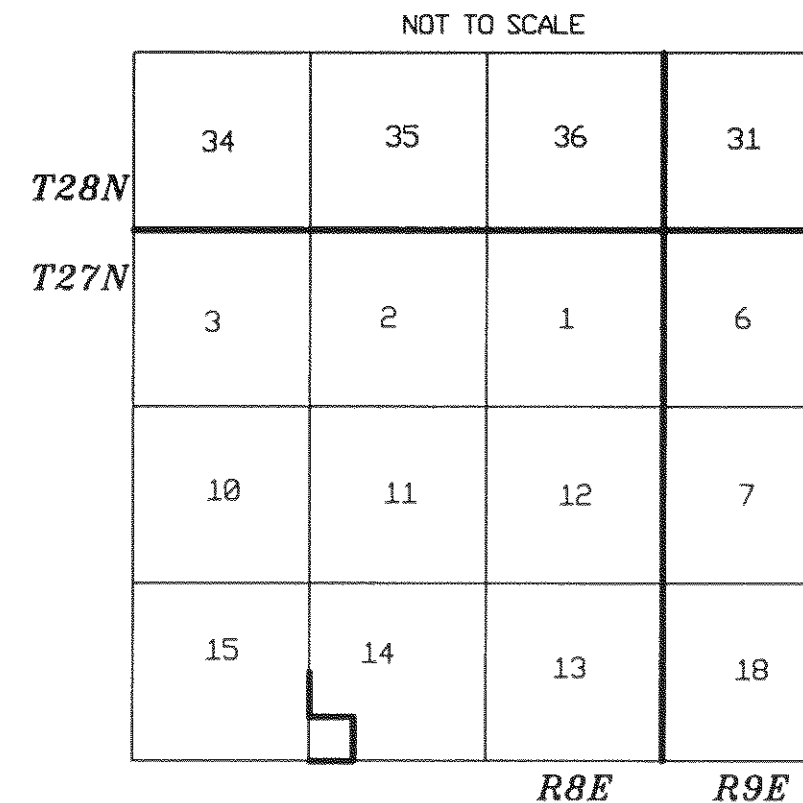


STATE PLANE COORDINATES CALIFORNIA - ZONE 1 1983		
θ = 0°35'35" AT HPGN D CA 02 ES, MULTIPLY GRID DISTANCES BY 1.000276 TO GET GROUND DISTANCES.		
CORNER #	NORTHING	EASTING
5	1,957,104.9102	6,829,184.2886
2	1,959,717.7031	6,826,507.2906
3	1,959,759.1240	6,829,145.0096
1	1,959,679.0724	6,823,067.6461
10	1,954,420.4102	6,826,584.5930
8	1,954,427.2169	6,823,933.8209
4	1,957,072.0043	6,823,891.5807

MULTIPLY MEASURED DISTANCES BY
1.000276 TO GET GROUND DISTANCES

VICINITY MAP



BASIS OF BEARINGS

"MEASURED BEARINGS AND DISTANCES ARE GRID
BASED ON THE CALIFORNIA COORDINATE SYSTEM OF
1983 (CCS83), ZONE 1.

θ = 0°35'35" AT HPGN D CA 02 ES, MULTIPLY GRID
DISTANCES BY 1.000276 TO GET GROUND DISTANCES.

CONTROL WAS ESTABLISHED WITH G.P.S., TOPCON
HIPER, DUAL FREQUENCY. CONTROL WAS ESTABLISHED
USING THE FOLLOWING STATIONS:

"HPGN D CA 02 ES" (DF4390) EPOCH 1991.35
LATITUDE: 40°10'42.49563" N 1949611.19 N
LONGITUDE: 121°05'35.39575" W 6815050.79 E

"HPGN CA 02 27" (KS2012) EPOCH 1991.35
LATITUDE: 39°51'14.41395" N 1832871.05 N
LONGITUDE: 120°41'06.40820" W 6930833.50 E

LATITUDES AND LONGITUDES AS PUBLISHED BY
NATIONAL GEODETIC SURVEYS (NGS) IN JUNE 2001.

GENERAL NOTES

A STANDARD UNITED STATES FOREST SERVICE (USFS)
DRIVE-IN MONUMENT IS A 5/8" DIAMETER ALUMINUM ROD WITH
A 3-1/4" ALUMINUM CAP EDGE-MARKED WITH THE USFS LOGO.

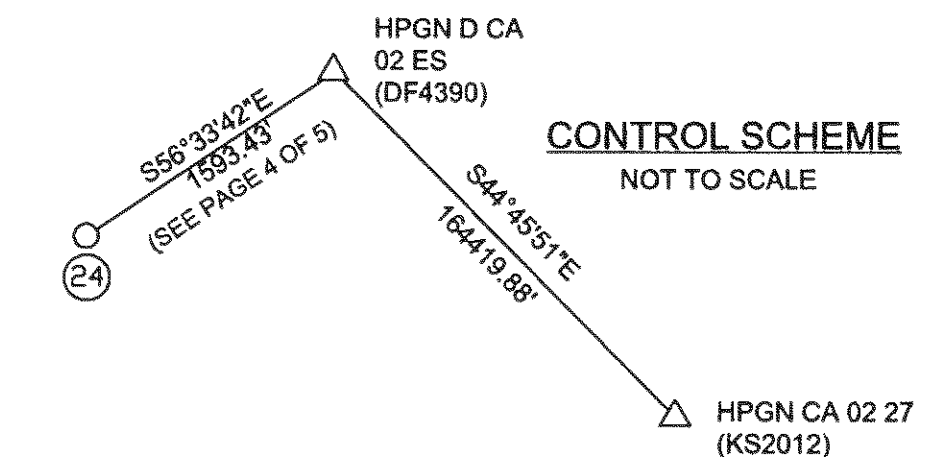
A STANDARD BUREAU OF LAND MANAGEMENT (BLM)
MONUMENT IS A 2-1/2" DIAMETER STEEL PIPE, 28"
LONG WITH A 3-1/2" BRASS CAP EDGE-MARKED WITH
THE BLM LOGO.

SURVEY HISTORY

R1 GENERAL LAND OFFICE NOTES (1904 Victor Barber)

LEGEND

- CORNER POINT - NOTHING SET
- ◆ FOUND COLLINS ALMANOR FOREST (CAF) CORNER
- ⊠ FOUND BLM CORNER
- FOUND USFS CORNER
- (with dot) CALCULATED CORNER
- ▲ FOUND LS CORNER
- ⓪ CORNER NOTE
- SET STANDARD U.S. FOREST SERVICE DRIVE-IN MONUMENT (BEARING TREES AS NOTED)
- PROPERTY BOUNDARY MARKED AND POSTED

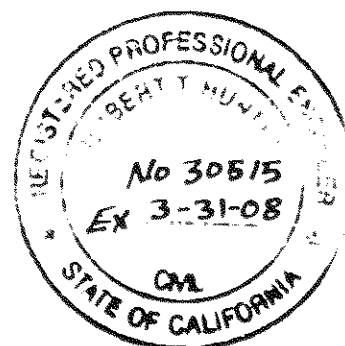


SHEET INDEX

SECTION 14	1 OF 5
SECTION 15	2 OF 5
SECTION 22	3 OF 5
SECTION 25	4 OF 5
CORNER NOTES	5 OF 5

DGA&V LAND SURVEYOR'S

11448 SMITH RD.
MARYSVILLE, CA. 95901
530-671-6375



SURVEYOR'S STATEMENT

THIS MAP CORRECTLY REPRESENTS A SURVEY MADE BY ME OR
UNDER MY DIRECTION IN CONFORMANCE WITH THE REQUIREMENTS
OF THE PROFESSIONAL LAND SURVEYORS' ACT AT THE REQUEST OF
PLUMAS NATIONAL FOREST IN MARCH 19, 2007.

William G. Snow
WILLIAM G. SNOW L.S. 5623
LICENSE EXP. DATE 12/31/08

COUNTY SURVEYOR'S STATEMENT

THIS MAP HAS BEEN EXAMINED IN ACCORDANCE WITH SECTION
8766 OF THE PROFESSIONAL LAND SURVEYORS' THIS 9 DAY OF
April 20 07.

R Tom Hunter
PLUMAS COUNTY SURVEYOR
LICENSE EXP. DATE 3/31/08
RCE 30515

RECORDER'S STATEMENT

FILED THIS 13 DAY OF April 20 07 AT 2:42 PM IN
BOOK 14 OF RECORDS OF SURVEYS, AT PAGE 57-63 AT
THE REQUEST OF THE COUNTY SURVEYOR.

FEE 16.00 KATHLEEN WILLIAMS
COUNTY RECORDER
DOC. No: 2007-0003028 BY: *Debra Hansen*
DEPUTY

RECORD OF SURVEY

SECTION 14, T27N R8E, MDM,
PLUMAS COUNTY, CALIFORNIA
FOR
U.S.D.A. PLUMAS NATIONAL FOREST
P.O. BOX 11500, QUINCY, CA.

DRAWN BY: B. SNOW DATE: OCTOBER, 2006