

Basis of Bearings

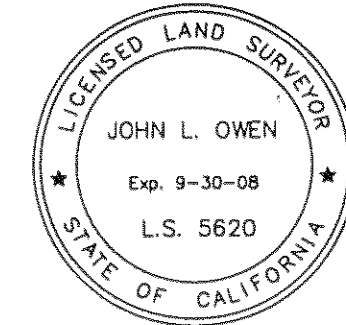
The Basis of Bearings for this map is the Northerly line of the Alley through Blocks 2, 3, 4 & 5 shown as N67°13'E on 5 RS 103 & 12 RS 144, Plumas County Records.

Notes

Blocks 2, 3, 4 & 5 were established by a Record of Survey for Ernest Ross et al filed in Book 5 of Record of Surveys at page 103 & for Anthony G. Diaz filed in Book 12 of Record of Surveys at page 144, Plumas County Records.

SURVEYOR'S STATEMENT

This map correctly represents a survey made by me or under my direction in conformance with the requirements of the Professional Land Surveyor's Act at the request of Richard Craig in September, 2005.



John L. Owen
John L. Owen LS 5620

COUNTY SURVEYOR'S STATEMENT

This map has been examined in accordance with Section 8766 of the Professional Land Surveyor's Act this 15th day of January, 2007.



By: *R. Tom Sluete*
PLUMAS COUNTY SURVEYOR
License Expiration Date 3/31/08
RCE 30515

RECORDER'S STATEMENT

Filed this 18th day of January, 2007 at 3:21 p.m. in Book 14 of Record of Surveys, at page 51, at the request of the County Surveyor.

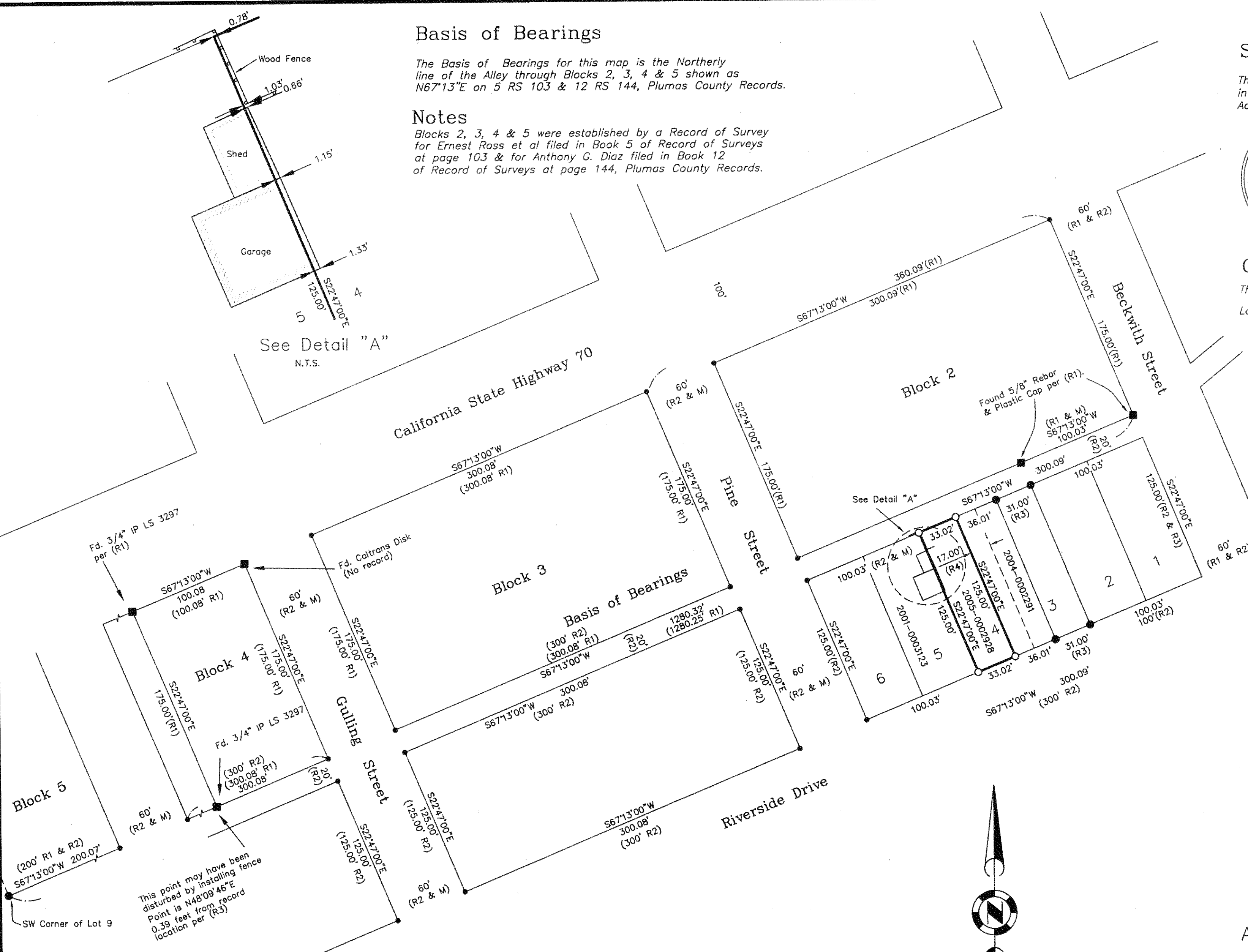
Fee 8⁰⁰
Document No. 2007-0000468
Kathleen Williams
County Recorder
by *Laura J. Davis*
Deputy

**RECORD OF SURVEY
for
RICHARD CRAIG**

Within City of Portola
A portion of Lot 4, Block 2, Portola Townsite
A portion of Section 36
T. 23 N., R. 13 E., M.D.M.

Plumas County ~ California
Scale 1" = 60' January, 2006

Hamby Surveying Inc.
P.O. Box 1209
Portola, CA 96122
(530) 832-5571



LEGEND

- FOUND point as described
- FOUND 5/8 Rebar with Aluminum Cap LS 2843 per (R3)
- Set 5/8 Rebar with Aluminum, Cap LS 5620
- Nothing found or set.
- (R1) RECORD per 5 RS 103
- (R2) RECORD per A RM 34
- (R3) RECORD per 12 RS 144
- (R4) RECORD per Document No. 2005-2928

