

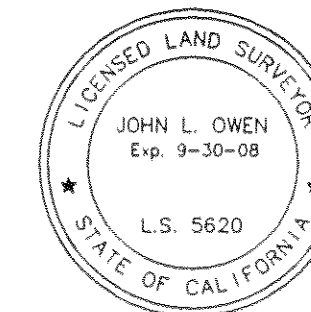
BASIS OF BEARINGS

The Basis of Bearings for this map is the North Line of Parcel 2 shown as N89°53'40"E on the map filed in the office of the Recorder of Plumas County in Book 11 Parcel Maps at page 113.

This Record of Survey was prepared to reflect a Lot Line Adjustment for which a resolution is recorded as document 2006-0008372, Plumas County Records.

SURVEYOR'S STATEMENT

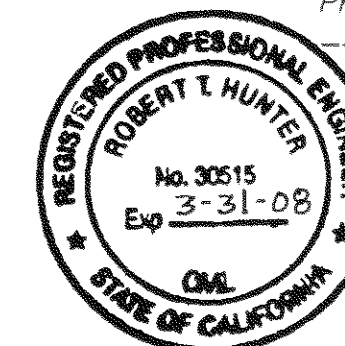
This map correctly represents a survey made by me or under my direction in conformance with the requirements of the Professional Land Surveyors' Act at the request of Gregory M. Withrow in August, 2006.



John L. Owen
John L. Owen LS 5620
License Exp. 9-30-08

COUNTY SURVEYOR'S STATEMENT

This map has been examined in accordance with Section 8766 of the Professional Land Surveyors' Act this 15th day of January, 2007.



R Tom Hunter
R TOM HUNTER
PLUMAS COUNTY SURVEYOR
RCE 30515

RECORDER'S STATEMENT

Filed this 18th day of January, 2007 at 3:21 p.m. in Book 14 of Record of Surveys, at page 50, at the request of the County Surveyor.

Fee: 8.00
Document No. 2007-0000467

Kathleen Williams
County Recorder
By: *Laura L Davis*
Deputy

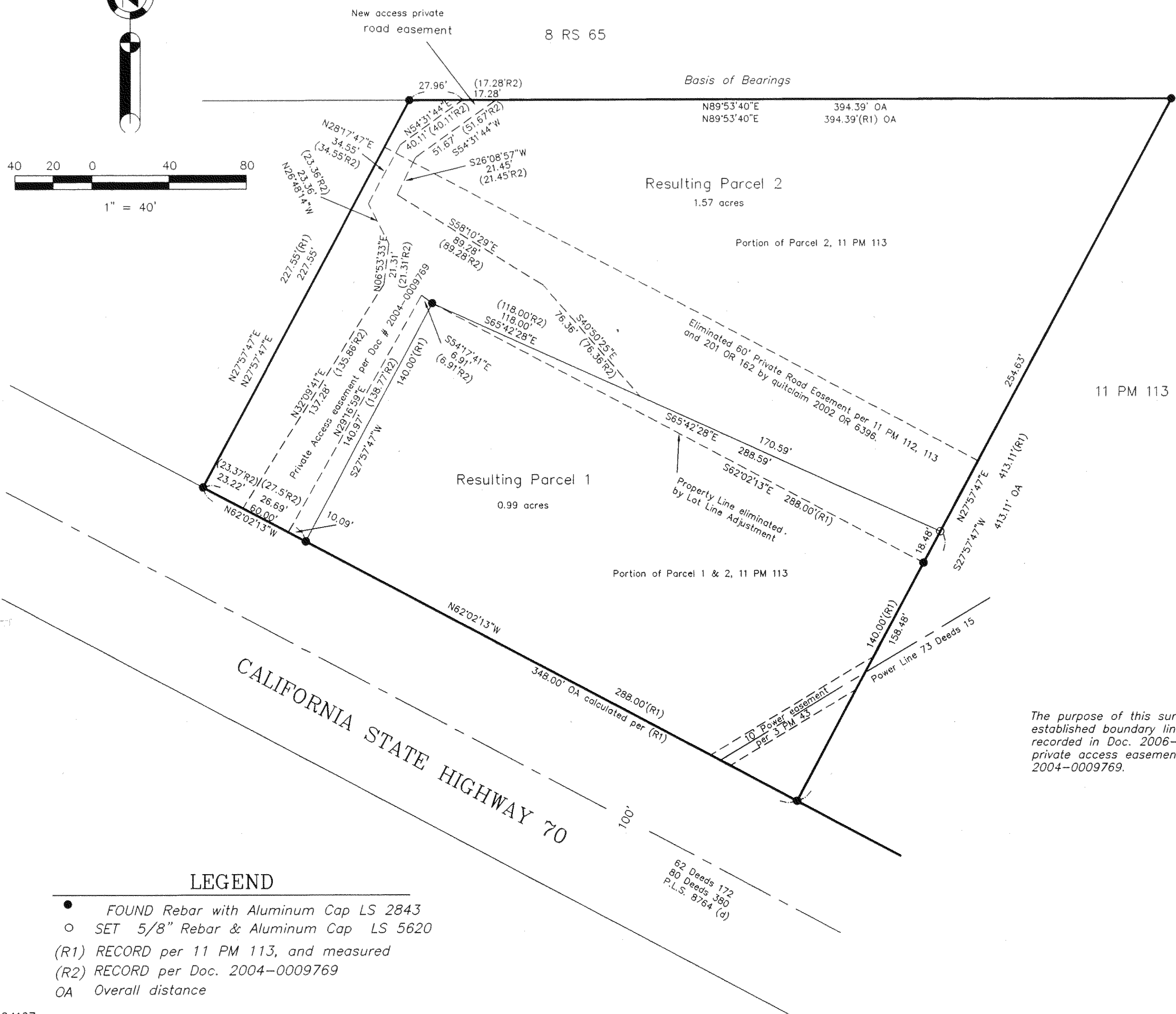
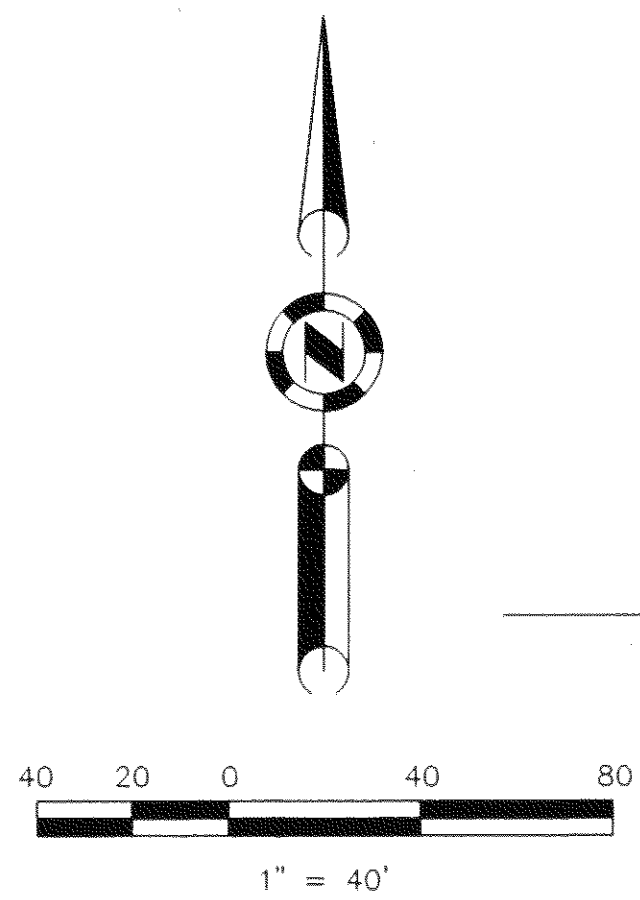
RECORD OF SURVEY

for
GREGORY M. WITHROW
GEORGE E. AND RUTH C. KIDDER

A portion of the NW 1/4 of Section 22
T. 24 N., R. 10 E., M.D.M.

Plumas County ~ California
Scale 1" = 40' JULY, 2004

Hamby Surveying Inc.
P.O. Box 1209
Portola, CA 96122
(530) 832-5571



The purpose of this survey is to show the established boundary line per L.L.A. recorded in Doc. 2006-0008372 and show private access easement per Doc. 2004-0009769.

LEGEND

- FOUND Rebar with Aluminum Cap LS 2843
- SET 5/8" Rebar & Aluminum Cap LS 5620
- (R1) RECORD per 11 PM 113, and measured
- (R2) RECORD per Doc. 2004-0009769
- OA Overall distance