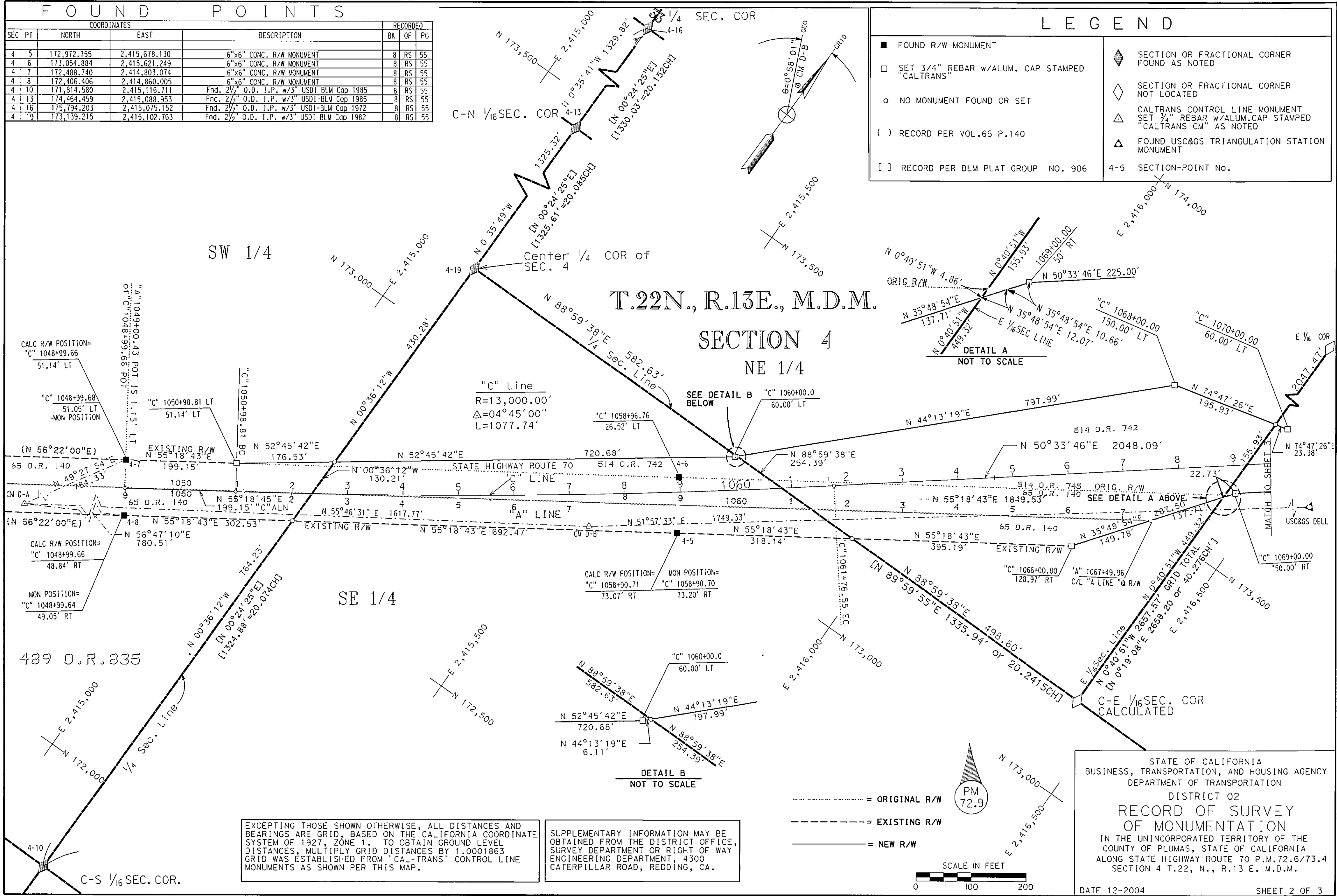


FOUND POINTS

COORDINATES				DESCRIPTION	RECORDED		
SEC	PT	NORTH	EAST		BR	OF	PG
4	5	172,972.755	2,415,678.130	6"x6" CONC. R/W MONUMENT	8	RS	55
4	6	173,054.884	2,415,621.249	6"x6" CONC. R/W MONUMENT	8	RS	55
4	7	172,488.740	2,414,803.074	6"x6" CONC. R/W MONUMENT	8	RS	55
4	8	172,406.406	2,414,860.005	6"x6" CONC. R/W MONUMENT	8	RS	55
4	10	171,814.580	2,415,116.711	Fnd. 2 1/2" O.D. I.P. w/3" USDI-BLM Cop 1985	8	RS	55
4	13	174,464.459	2,415,088.953	Fnd. 2 1/2" O.D. I.P. w/3" USDI-BLM Cop 1985	8	RS	55
4	16	175,794.203	2,415,075.152	Fnd. 2 1/2" O.D. I.P. w/3" USDI-BLM Cop 1972	8	RS	55
4	19	173,139.215	2,415,102.763	Fnd. 2 1/2" O.D. I.P. w/3" USDI-BLM Cop 1982	8	RS	55

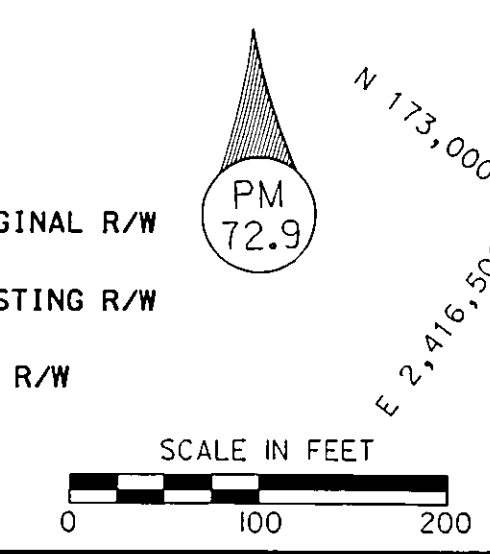
LEGEND

- FOUND R/W MONUMENT
- SET 3/4" REBAR w/ALUM. CAP STAMPED "CALTRANS"
- NO MONUMENT FOUND OR SET
- () RECORD PER VOL.65 P.140
- [] RECORD PER BLM PLAT GROUP NO. 906
- ◆ SECTION OR FRACTIONAL CORNER FOUND AS NOTED
- ◇ SECTION OR FRACTIONAL CORNER NOT LOCATED
- △ CALTRANS CONTROL LINE MONUMENT SET 3/4" REBAR w/ALUM. CAP STAMPED "CALTRANS CM" AS NOTED
- ▲ FOUND USC&GS TRIANGULATION STATION MONUMENT
- 4-5 SECTION-POINT No.



EXCEPTING THOSE SHOWN OTHERWISE, ALL DISTANCES AND BEARINGS ARE GRID, BASED ON THE CALIFORNIA COORDINATE SYSTEM OF 1927, ZONE 1. TO OBTAIN GROUND LEVEL DISTANCES, MULTIPLY GRID DISTANCES BY 1.0001863. GRID WAS ESTABLISHED FROM "CAL-TRANS" CONTROL LINE MONUMENTS AS SHOWN PER THIS MAP.

SUPPLEMENTARY INFORMATION MAY BE OBTAINED FROM THE DISTRICT OFFICE, SURVEY DEPARTMENT OR RIGHT OF WAY ENGINEERING DEPARTMENT, 4300 CATERPILLAR ROAD, REDDING, CA.



STATE OF CALIFORNIA
 BUSINESS, TRANSPORTATION, AND HOUSING AGENCY
 DEPARTMENT OF TRANSPORTATION
 DISTRICT 02
**RECORD OF SURVEY
 OF MONUMENTATION**
 IN THE UNINCORPORATED TERRITORY OF THE
 COUNTY OF PLUMAS, STATE OF CALIFORNIA
 ALONG STATE HIGHWAY ROUTE 70 P.M.72.6/73.4
 SECTION 4 T.22, N., R.13 E. M.D.M.
 DATE 12-2004 SHEET 2 OF 3