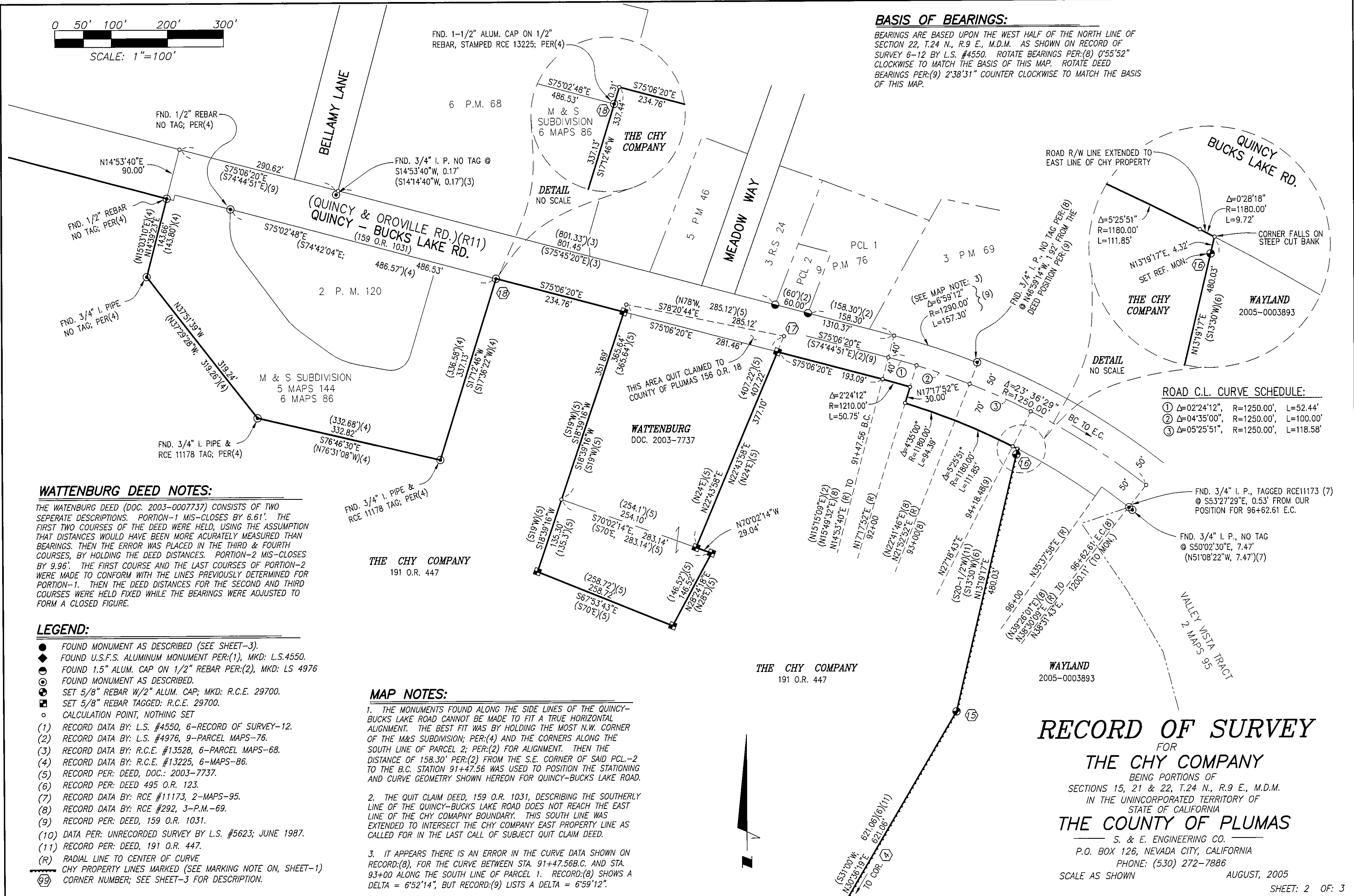


BASIS OF BEARINGS:

BEARINGS ARE BASED UPON THE WEST HALF OF THE NORTH LINE OF SECTION 22, T.24 N., R.9 E., M.D.M. AS SHOWN ON RECORD OF SURVEY 6-12 BY L.S. #4550. ROTATE BEARINGS PER:(8) 0°55'52" CLOCKWISE TO MATCH THE BASIS OF THIS MAP. ROTATE DEED BEARINGS PER:(9) 2°38'31" COUNTER CLOCKWISE TO MATCH THE BASIS OF THIS MAP.



WATTENBURG DEED NOTES:

THE WATTENBURG DEED (DOC. 2003-0007737) CONSISTS OF TWO SEPARATE DESCRIPTIONS. PORTION-1 MIS-CLOSES BY 6.61'. THE FIRST TWO COURSES OF THE DEED WERE HELD, USING THE ASSUMPTION THAT DISTANCES WOULD HAVE BEEN MORE ACCURATELY MEASURED THAN BEARINGS. THEN THE ERROR WAS PLACED IN THE THIRD & FOURTH COURSES, BY HOLDING THE DEED DISTANCES. PORTION-2 MIS-CLOSES BY 9.96'. THE FIRST COURSE AND THE LAST COURSES OF PORTION-2 WERE MADE TO CONFORM WITH THE LINES PREVIOUSLY DETERMINED FOR PORTION-1. THEN THE DEED DISTANCES FOR THE SECOND AND THIRD COURSES WERE HELD FIXED WHILE THE BEARINGS WERE ADJUSTED TO FORM A CLOSED FIGURE.

LEGEND:

- FOUND MONUMENT AS DESCRIBED (SEE SHEET-3).
 - ◆ FOUND U.S.F.S. ALUMINUM MONUMENT PER:(1), MKD: L.S.4550.
 - FOUND 1.5" ALUM. CAP ON 1/2" REBAR PER:(2), MKD: LS 4976.
 - FOUND MONUMENT AS DESCRIBED.
 - ⊕ SET 5/8" REBAR W/2" ALUM. CAP; MKD: R.C.E. 29700.
 - ⊖ SET 5/8" REBAR TAGGED: R.C.E. 29700.
 - CALCULATION POINT, NOTHING SET
- (1) RECORD DATA BY: L.S. #4550, 6-RECORD OF SURVEY-12.
 - (2) RECORD DATA BY: L.S. #4976, 9-PARCEL MAPS-76.
 - (3) RECORD DATA BY: R.C.E. #13528, 6-PARCEL MAPS-68.
 - (4) RECORD DATA BY: R.C.E. #13225, 6-MAPS-86.
 - (5) RECORD PER: DEED, DOC.: 2003-7737.
 - (6) RECORD PER: DEED 495 O.R. 123.
 - (7) RECORD DATA BY: RCE #11173, 2-MAPS-95.
 - (8) RECORD DATA BY: RCE #292, 3-P.M.-69.
 - (9) RECORD PER: DEED, 159 O.R. 1031.
 - (10) DATA PER: UNRECORDED SURVEY BY L.S. #5623; JUNE 1987.
 - (11) RECORD PER: DEED, 191 O.R. 447.
- (R) RADIAL LINE TO CENTER OF CURVE
 CHY PROPERTY LINES MARKED (SEE MARKING NOTE ON, SHEET-1)
 (99) CORNER NUMBER; SEE SHEET-3 FOR DESCRIPTION.

MAP NOTES:

1. THE MONUMENTS FOUND ALONG THE SIDE LINES OF THE QUINCY-BUCKS LAKE ROAD CANNOT BE MADE TO FIT A TRUE HORIZONTAL ALIGNMENT. THE BEST FIT WAS BY HOLDING THE MOST N.W. CORNER OF THE M&S SUBDIVISION; PER:(4) AND THE CORNERS ALONG THE SOUTH LINE OF PARCEL 2; PER:(2) FOR ALIGNMENT. THEN THE DISTANCE OF 158.30' PER:(2) FROM THE S.E. CORNER OF SAID PCL-2 TO THE B.C. STATION 91+47.56 WAS USED TO POSITION THE STATIONING AND CURVE GEOMETRY SHOWN HEREON FOR QUINCY-BUCKS LAKE ROAD.
2. THE QUIT CLAIM DEED, 159 O.R. 1031, DESCRIBING THE SOUTHERLY LINE OF THE QUINCY-BUCKS LAKE ROAD DOES NOT REACH THE EAST LINE OF THE CHY COMPANY BOUNDARY. THIS SOUTH LINE WAS EXTENDED TO INTERSECT THE CHY COMPANY EAST PROPERTY LINE AS CALLED FOR IN THE LAST CALL OF SUBJECT QUIT CLAIM DEED.
3. IT APPEARS THERE IS AN ERROR IN THE CURVE DATA SHOWN ON RECORD:(8), FOR THE CURVE BETWEEN STA. 91+47.56B.C. AND STA. 93+00 ALONG THE SOUTH LINE OF PARCEL 1. RECORD:(8) SHOWS A DELTA = 6°52'14", BUT RECORD:(9) LISTS A DELTA = 6°59'12".

ROAD C.L. CURVE SCHEDULE:

- ① Δ=02°24'12", R=1250.00', L=52.44'
- ② Δ=04°35'00", R=1250.00', L=100.00'
- ③ Δ=05°25'51", R=1250.00', L=118.58'

RECORD OF SURVEY

FOR
THE CHY COMPANY
 BEING PORTIONS OF
 SECTIONS 15, 21 & 22, T.24 N., R.9 E., M.D.M.
 IN THE UNINCORPORATED TERRITORY OF
 STATE OF CALIFORNIA
THE COUNTY OF PLUMAS
 S. & E. ENGINEERING CO.
 P.O. BOX 126, NEVADA CITY, CALIFORNIA
 PHONE: (530) 272-7886
 SCALE AS SHOWN AUGUST, 2005
 SHEET: 2 OF: 3