

FOUND MONUMENTS

No.	COORDINATES		DESCRIPTION	RECORDED		
	NORTH	EAST		BK	OF	PG
11-5	60480.536	720128.582	3/4 inch iron pipe with washer stamp "L.S.3336"	4	PM	84
11-17	60358.024	720128.142	3/4 inch iron pipe with washer stamp "L.S.3336"	4	PM	84
11-34	60585.259	719899.275	1/2 inch rebar (No Cap) 9 cm above ground	6	PM	53
11-35	60652.301	719743.955	1/2 inch rebar with plastic cap stamp "L.S.3297"	6	PM	53
11-36	60566.809	719903.405	1/2 inch rebar with plastic cap stamp "L.S.3297"	6	PM	53
11-37	60652.603	719744.151	1 inch iron pipe accepted for NW corner of Parcel 1	6	PM	53
11-38	60499.403	720049.842	1/2 inch rebar without tag, accepted for SE corner of Parcel 4	6	PM	53
11-39	60518.142	720053.535	1/2 inch rebar without tag, accepted for NE corner of Parcel 4	6	PM	53
11-40	60470.024	719970.950	1/2 rebar with plastic cap stamp "L.S.3297"	6	PM	53
11-41	60452.684	719976.864	3/4 inch iron pipe with washer stamp "L.S.3336"	4	PM	84
11-62	60495.983	720093.064	3/4 inch iron pipe with washer stamp "L.S.3336"	4	PM	84

MONUMENTS SET

No.	COORDINATES		DESCRIPTION
	NORTH	EAST	
(12)	60525.538	720036.537	3/4 inch rebar with 1-1/2 inch aluminum cap stamped "CALTRANS"
(13)	60494.782	720037.431	3/4 inch rebar with 1-1/2 inch aluminum cap stamped "CALTRANS"

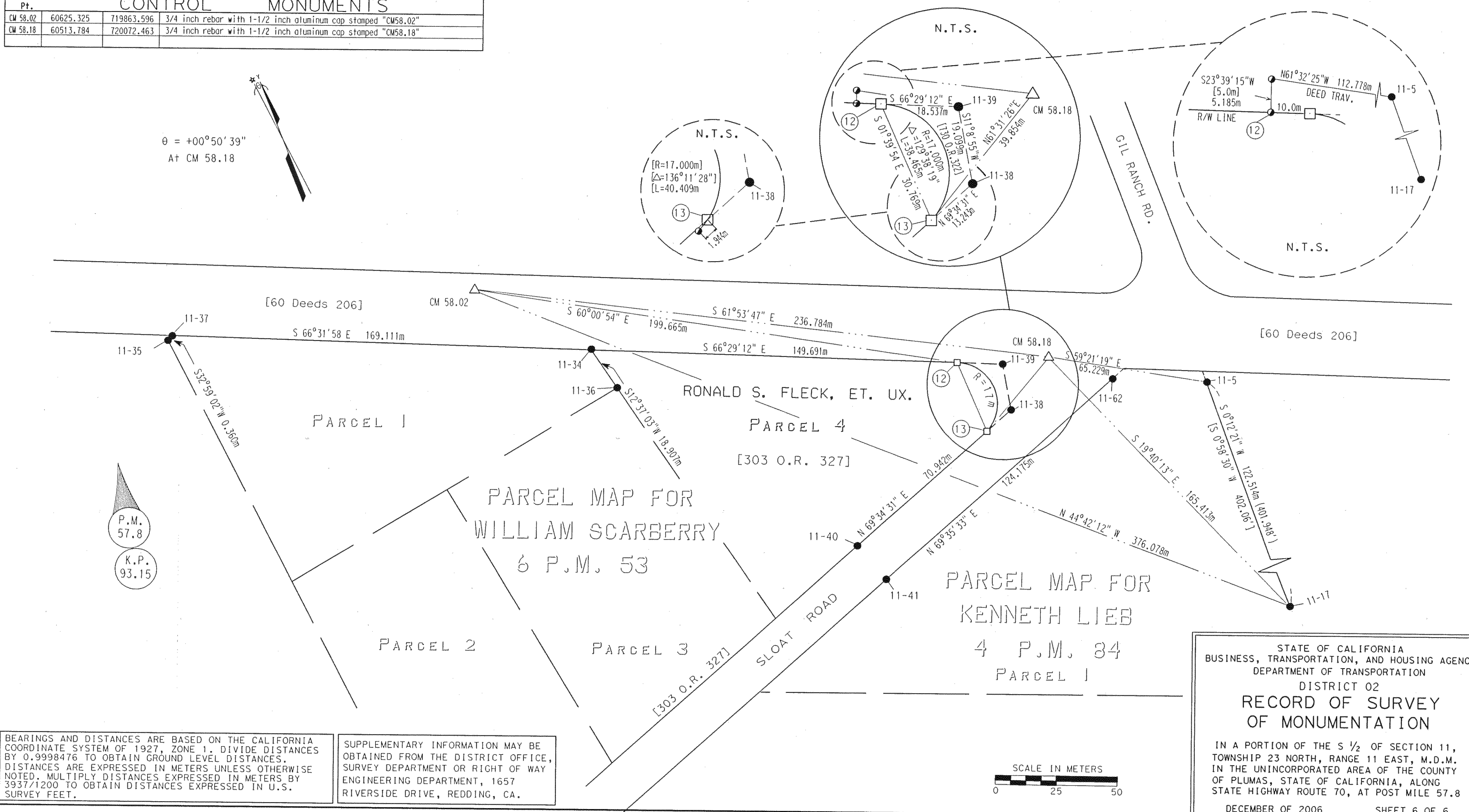
LEGEND

- SET 3/4 INCH REBAR W/STD.CALTRANS ALUMINUM CAP STAMPED "CALTRANS R/W"
- MONUMENT FOUND AS NOTED
- [ ] RECORD DOCUMENT
- TRAVERSE POINT PER DEED RECORDED 1/30/98 IN BOOK 730 AT PAGE 322
- ◆ U.S.P.L.S. CORNER FOUND AS NOTED
- ◇ U.S.P.L.S. CORNER NOT LOCATED
- △ CALTRANS CONTROL LINE MONUMENT
- 11-X CALTRANS "CADASTRAL CARD" No.

T. 23N., R. 11E., M.D.M.  
SECTION 11

Pt.	COORDINATES		DESCRIPTION
	NORTH	EAST	
CM 58.02	60625.325	719863.596	3/4 inch rebar with 1-1/2 inch aluminum cap stamped "CM58.02"
CM 58.18	60513.784	720072.463	3/4 inch rebar with 1-1/2 inch aluminum cap stamped "CM58.18"

θ = +00°50'39"  
At CM 58.18



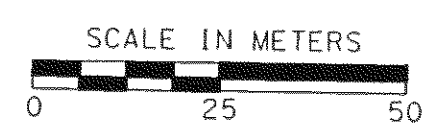
P.M.  
57.8  
K.P.  
93.15

PARCEL MAP FOR  
WILLIAM SCARBERRY  
6 P.M. 53

PARCEL MAP FOR  
KENNETH LIEB  
4 P.M. 34  
PARCEL 1

BEARINGS AND DISTANCES ARE BASED ON THE CALIFORNIA COORDINATE SYSTEM OF 1927, ZONE 1. DIVIDE DISTANCES BY 0.9998476 TO OBTAIN GROUND LEVEL DISTANCES. DISTANCES ARE EXPRESSED IN METERS UNLESS OTHERWISE NOTED. MULTIPLY DISTANCES EXPRESSED IN METERS BY 3937/1200 TO OBTAIN DISTANCES EXPRESSED IN U.S. SURVEY FEET.

SUPPLEMENTARY INFORMATION MAY BE OBTAINED FROM THE DISTRICT OFFICE, SURVEY DEPARTMENT OR RIGHT OF WAY ENGINEERING DEPARTMENT, 1657 RIVERSIDE DRIVE, REDDING, CA.



STATE OF CALIFORNIA  
BUSINESS, TRANSPORTATION, AND HOUSING AGENCY  
DEPARTMENT OF TRANSPORTATION  
DISTRICT 02  
RECORD OF SURVEY  
OF MONUMENTATION  
IN A PORTION OF THE S 1/2 OF SECTION 11,  
TOWNSHIP 23 NORTH, RANGE 11 EAST, M.D.M.  
IN THE UNINCORPORATED AREA OF THE COUNTY  
OF PLUMAS, STATE OF CALIFORNIA, ALONG  
STATE HIGHWAY ROUTE 70, AT POST MILE 57.8  
DECEMBER OF 2006 SHEET 6 OF 6