

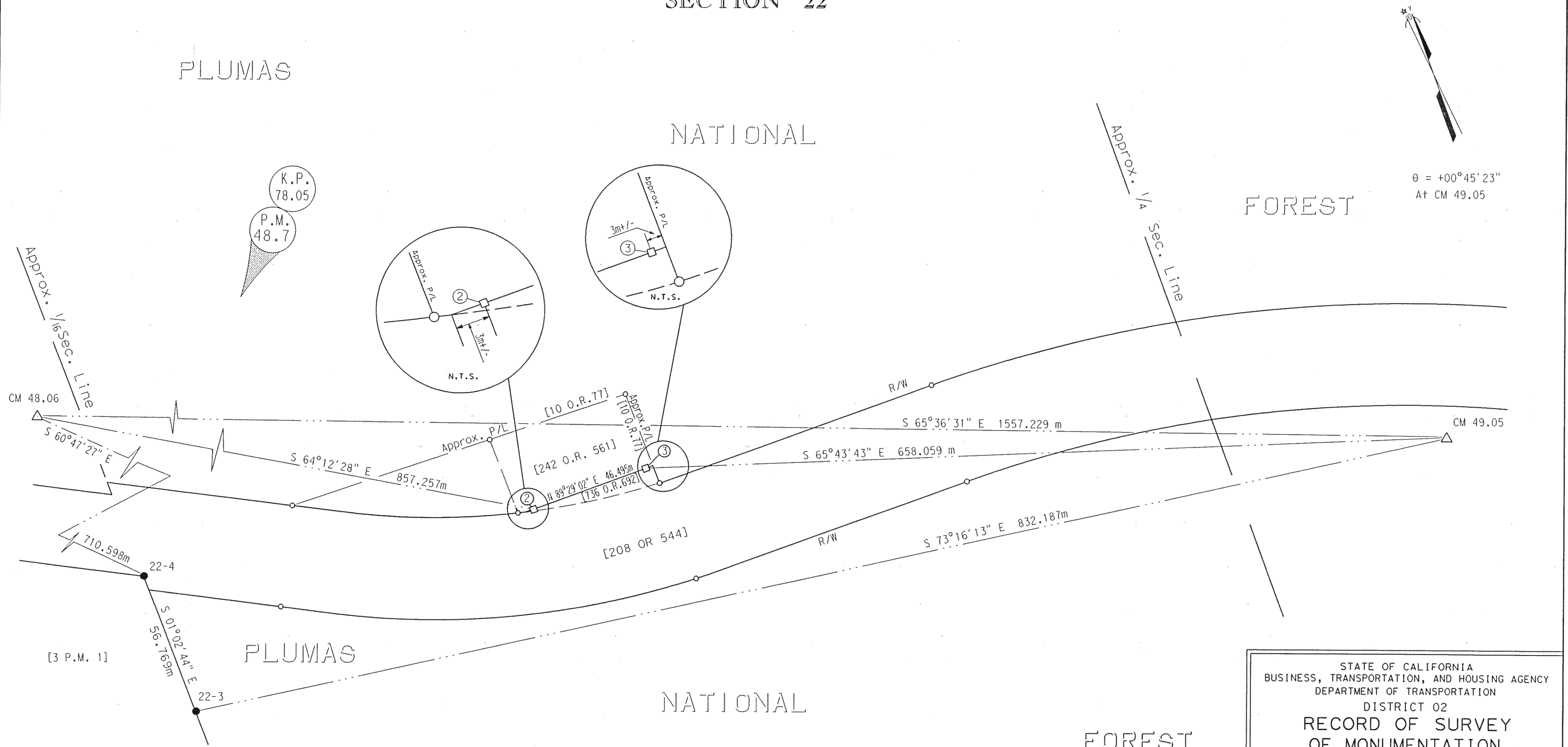
FOUND POINTS					
SEC	PT	NORTH	EAST	DESCRIPTION	RECORDED
22	3	67194.561	707679.524	3/4-inch rebar with aluminum cap stamped "CALTRANS"	BK 3 PG 1
22	4	67251.320	707678.489	3/4-inch Iron Pipe in concrete with tag "RCE 292"	BK 3 PG 1

CONTROL MONUMENTS			
PT	NORTH	EAST	DESCRIPTION
CM 48.06	67598.092	707058.247	3/4-inch rebar with 1-1/2 inch aluminum cap stamped "CALTRANS CM 48.06"
CM 49.05	66955.008	708476.487	3/4-inch rebar with 1-1/2 inch aluminum cap stamped "CALTRANS CM 49.05"

MONUMENTS SET		
No.	NORTH & BEARINGS	EAST & DISTANCES
(2)	67225.090	707830.101
(3)	67225.509	707876.594

LEGEND	
□ SET 3/4 INCH REBAR W/STD. CALTRANS ALUMINUM CAP STAMPED "CALTRANS R/W"	◆ U.S.P.L.S. CORNER FOUND AS NOTED
● MONUMENT FOUND AS NOTED	◇ U.S.P.L.S. CORNER NOT LOCATED
○ NO MONUMENT FOUND OR SET	△ CALTRANS CONTROL LINE MONUMENT
[ ] RECORD DOCUMENTS	22-X CALTRANS "CADASTRAL CARD" NO.

T. 24N., R. 10E., M.D.M.  
SECTION 22



BEARINGS AND DISTANCES ARE BASED ON THE CALIFORNIA COORDINATE SYSTEM OF 1927, ZONE 1. DIVIDE DISTANCES BY 0.9998476 TO OBTAIN GROUND LEVEL DISTANCES. DISTANCES ARE EXPRESSED IN METERS UNLESS OTHERWISE NOTED. MULTIPLY DISTANCES EXPRESSED IN METERS BY 3937/1200 TO OBTAIN DISTANCES EXPRESSED IN U.S. SURVEY FEET.

SUPPLEMENTARY INFORMATION MAY BE OBTAINED FROM THE DISTRICT OFFICE, SURVEY DEPARTMENT OR RIGHT OF WAY ENGINEERING DEPARTMENT, 1657 RIVERSIDE DRIVE, REDDING, CA.



STATE OF CALIFORNIA  
BUSINESS, TRANSPORTATION, AND HOUSING AGENCY  
DEPARTMENT OF TRANSPORTATION  
DISTRICT 02  
**RECORD OF SURVEY  
OF MONUMENTATION**  
IN A PORTION OF THE NW 1/4 OF SECTION 22,  
TOWNSHIP 24 NORTH, RANGE 10 EAST, M.D.M.  
IN THE UNINCORPORATED AREA OF THE COUNTY  
OF PLUMAS, STATE OF CALIFORNIA, ALONG  
STATE HIGHWAY ROUTE 70, AT POST MILE 48.5  
DECEMBER OF 2006 SHEET 2 OF 6