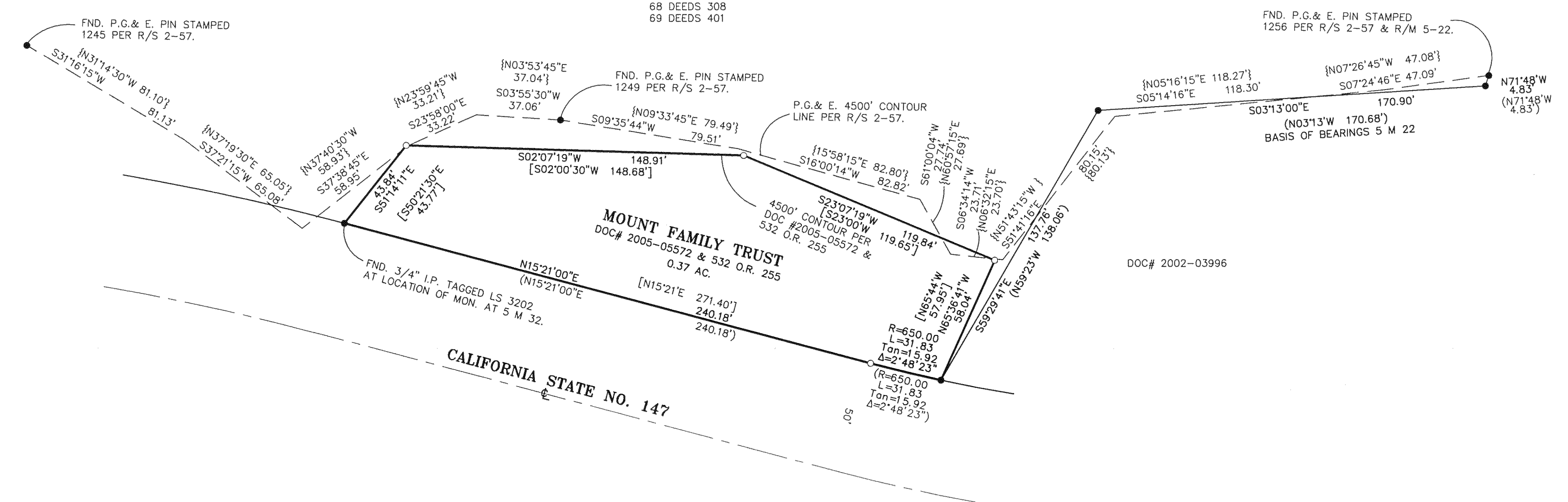


LAKE ALMANOR
68 DEEDS 308
69 DEEDS 401



SURVEYOR'S STATEMENT

THIS MAP CORRECTLY REPRESENTS A SURVEY MADE BY ME OR UNDER MY DIRECTION IN CONFORMANCE WITH THE REQUIREMENTS OF THE PROFESSIONAL LAND SURVEYOR'S ACT AT THE REQUEST OF DENNIS MASSON IN MAY 2005.

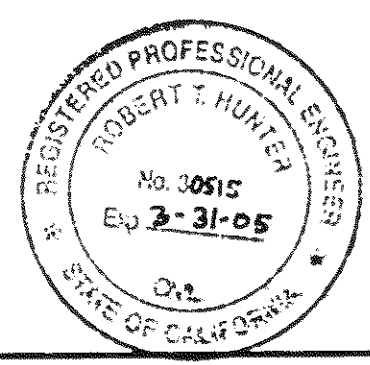
Vernon H. Templeton
VERNON H. TEMPLETON, L.S. 4647



COUNTY SURVEYOR'S STATEMENT

THIS MAP HAS BEEN EXAMINED IN ACCORDANCE WITH SECTION 8766 OF THE LAND SURVEYOR'S ACT THIS 6th DAY OF October, 2005

R. Tom Hunter
R. TOM HUNTER, PLUMAS COUNTY SURVEYOR R.C.E. 30515, EXP. 3/31/06



RECORDER'S STATEMENT

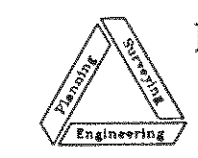
FILED THIS 6th DAY OF OCTOBER, 2005, AT 2:03 PM, IN BOOK 13 OF RECORD OF SURVEYS, AT PAGE 135, AT THE REQUEST OF THE COUNTY SURVEYOR.
FEE: \$8.00 DOCUMENT NO.: 2005-0010844
KATHLEEN WILLIAMS, PLUMAS COUNTY RECORDER

BY: *Laura L. Davis*
DEPUTY

RECORD OF SURVEY FOR MOUNT FAMILY TRUST

IN SECTION 3, T.27 N., R.8 E., M.D.B. & M. PLUMAS COUNTY, CALIFORNIA

SCALE : 1" = 30'



NST Engineering, Inc.
1495 Riverside Drive
Susanville, CA 96130
(916) 257-5173
2005-073

8/09/05
SHEET 1 OF 1