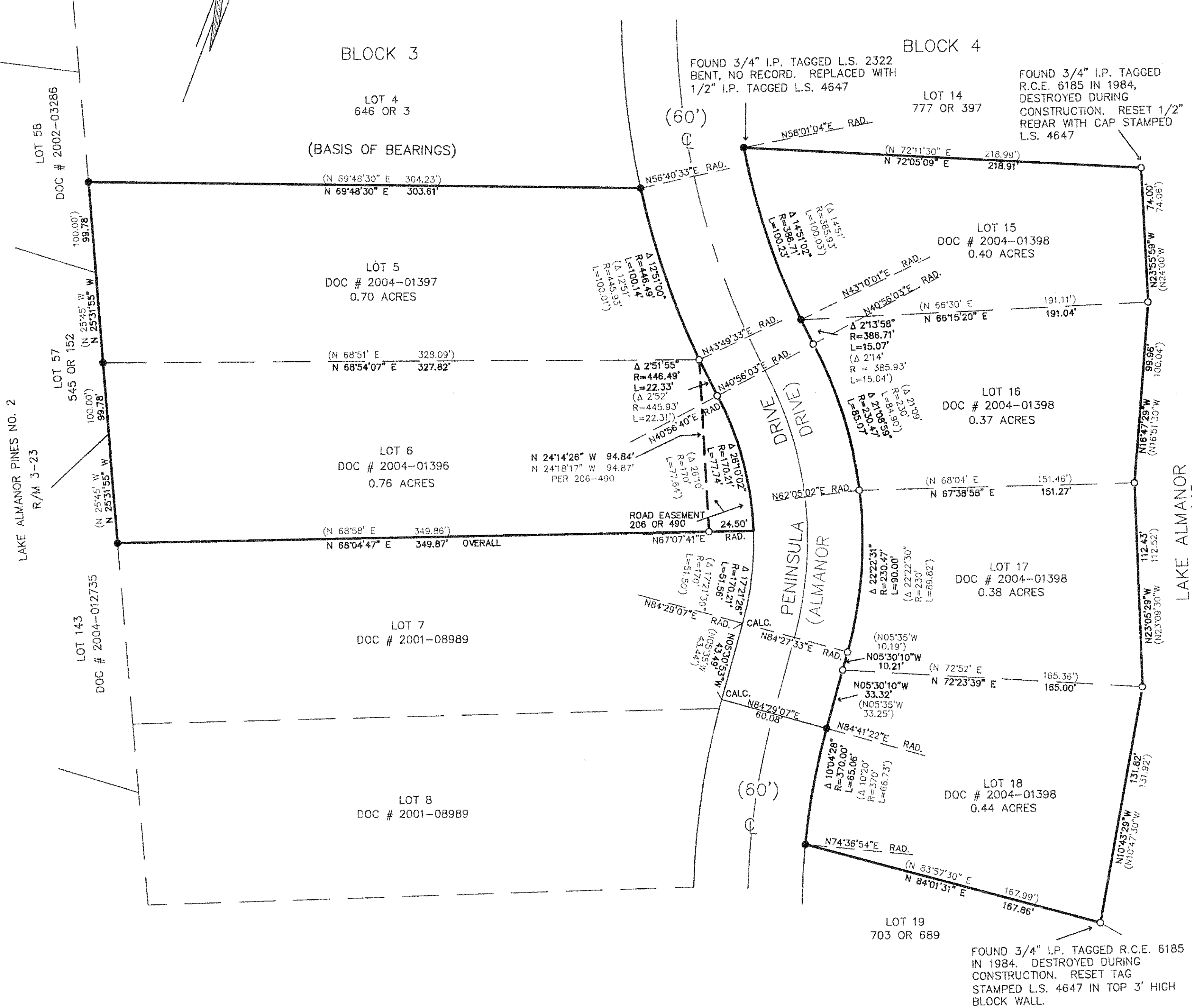


LAKE ALMANOR PENINSULA
UNIT NO. 2 R/M 1-61

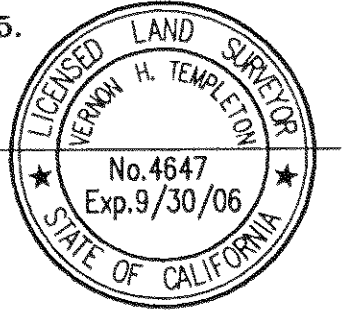
SCALE : 1" = 40'



SURVEYOR'S STATEMENT

THIS MAP CORRECTLY REPRESENTS A SURVEY MADE BY ME OR UNDER MY DIRECTION IN CONFORMANCE WITH THE REQUIREMENTS OF THE LAND SURVEYOR'S ACT AT THE REQUEST OF DAN MOUNTSIER IN MAY 2005.

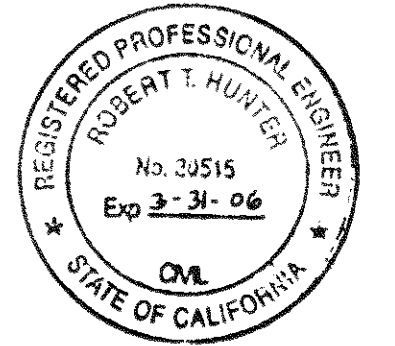
Vernon H. Templeton
VERNON H. TEMPLETON, L.S. 4647



COUNTY SURVEYOR'S STATEMENT

THIS MAP HAS BEEN EXAMINED IN ACCORDANCE WITH SECTION 8766 OF THE LAND SURVEYOR'S ACT THIS 23rd DAY OF Sept., 2005

R. Tom Hunter
R. TOM HUNTER, PLUMAS COUNTY SURVEYOR R.C.E. 30515, EXP. 3/31/06



RECORDER'S STATEMENT

FILED THIS 23 DAY OF Sept., 2005, AT 2:17 PM, IN BOOK 13 OF RECORD OF SURVEYS, AT PAGE 133, AT THE REQUEST OF THE COUNTY SURVEYOR.
FEE: \$8.00 DOCUMENT NO.: 2005-10246
KATHLEEN WILLIAMS, PLUMAS COUNTY RECORDER

BY: *Kathleen Williams*
DEPUTY

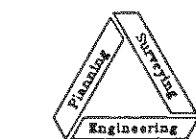
LEGEND

- FOUND 3/4" I.P. TAGGED R.C.E. 6185 PER R/M 1-61. EXCEPT AS NOTED
- SET 1/2" REBAR W/ CAP STAMPED LS 4647. EXCEPT AS NOTED.
- () RECORD INFORMATION PER R/M 1-61.

**RECORD OF SURVEY FOR
VANDENBERGHE PROPERTIES INC**

LAKE ALMANOR PENINSULA UNIT #2
LOTS 5,6 BLOCK 3. LOTS 15,16,17,18, BLOCK 4.
IN SECTION 19, T.28 N.,R.8 E., M.D.B. & M.
PLUMAS COUNTY, CALIFORNIA

SCALE : 1" = 40'



NST Engineering, Inc.
1495 Riverside Drive
Susanville, CA 96130
(916) 257-5173