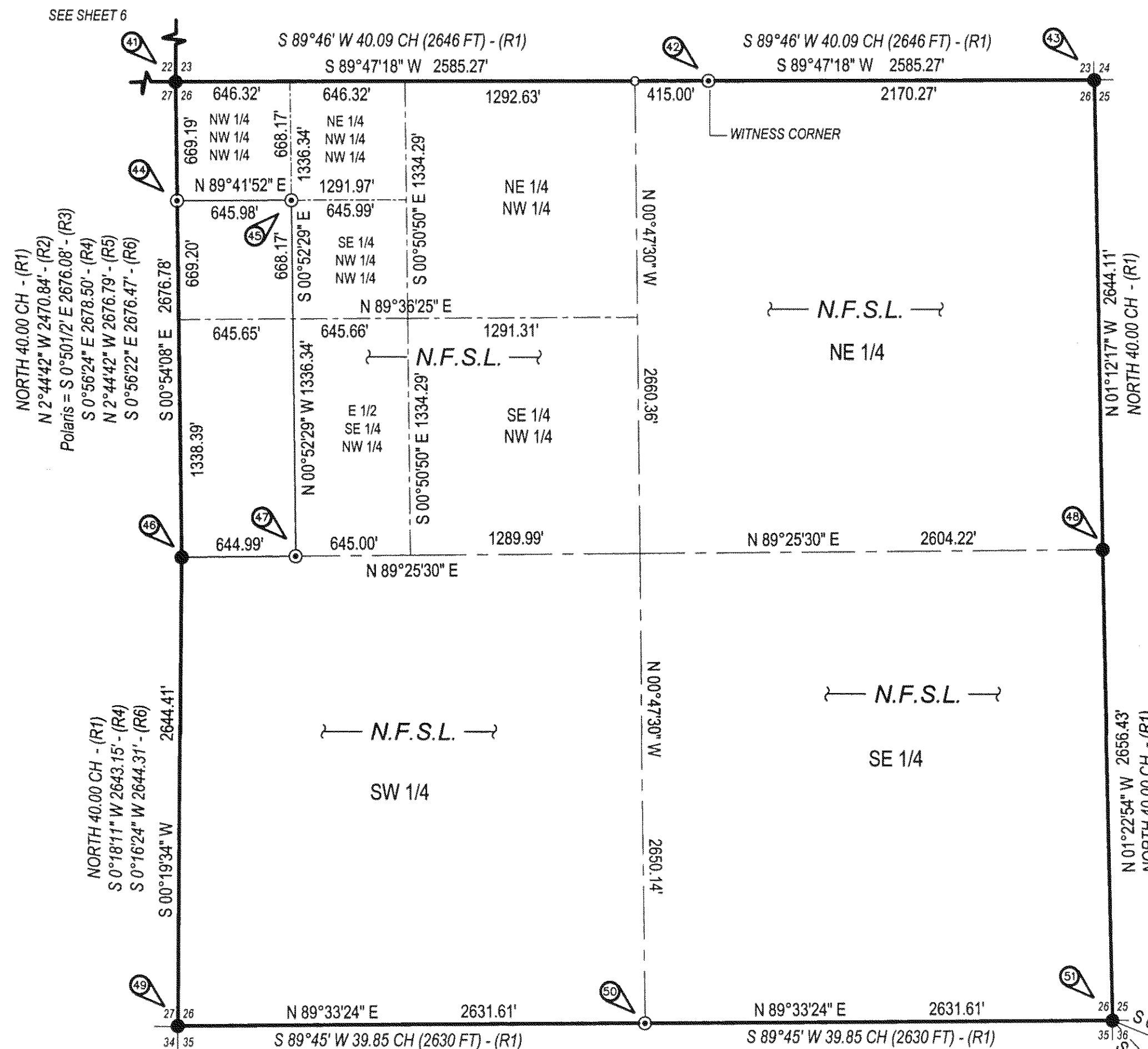


T. 25 N. R. 9 E. SECTIONS 26

Record of Survey

Empire Cadastral Survey

Sec. 21, 22 & 26, T. 25 N., R. 9 E. Sec. 15, 16, 22, 26, 29 & 32, T. 24 N., R. 10E. Mt. Diablo Meridian, California



NARRATIVE

All controlling corners for Section 26 were found, except for the North and South quarter corners. After a diligent search they were determined to be lost and set by single proportionate as per the 1973 BLM Manual. The subdivision of Section 26 was done by standard procedure as per the 1973 Manual.

HISTORY

- 1880 - William Minto, GLO, subdivided the township.
1950 - Richard R. Ecker, LS 2587, 1 RS 35, tied the section corner between Sections 22, 23, 26 & 27.
1950 - W. Robert Jennings, RCE 6185 & James F. Flanagan, RCE 292, 1 RS 46, surveyed the North half of the section line between Sections 26 & 27.
1967 - Adam Sydlik, BLM, remonumented certain corners in the township.
1969 - James F. Flanagan, RCE 292, 2 PM 86, sighted between the corners on the North half of the section line between Sections 26 & 27, but did not give a measurement.
1976 - John C. Simpson, RCE 11173, 4 RS 109, surveyed the section line between Sections 26 & 27.
1978 - Joseph G. Brandt, RCE 26870, 6 PM 128, surveyed the North half of the section line between Sections 26 & 27.
1988 - Gary T. Lippincott, LS 3634, 8 RS 43, surveyed the section line between Sections 26 & 27.
1999 - Campbell, PLS 4207, 11 RS 106, surveyed in the area of the North half of the section line between Sections 26 & 27 but did not give a measurement between the corners.

41. SECTION CORNER BETWEEN SECTIONS 22, 23, 26, 27 William Minto, 1880 GLO

Set: A slate stone, 14 x 8 x 5 ins., in stone mound, from which:
A black oak, 6 ins. diam., bears S 37° E 70 lks. (46.2 ft.)
A yellow pine, 20 ins. diam., bears S 64° W 79 lks., (52.1 ft.)
A yellow pine, 24 ins. diam., bears N 41° W 40 lks. (26.4 ft.)

Richard R. Ecker, LS 2587, 6/1950, 1 RS 35

Found: See RS file no. 1770 (1950)

James F. Flanagan, RCE 292, 9/ 1950, 1 RS 46

Found: IP (no tag) in rock mound. No other information is given.

Adam Sydlik, 1967 BLM

Found: An iron pipe, 3/4 in. diam., projecting 4 ins. above the ground, with metal tag marked LS 2587, firmly set in an embedded mound of stone, 3 ft. diam., 10 ins. high.
A black oak, 11 ins. diam., bears S 38° E 73 lks. (48.2 ft.), no blaze visible. (Record S 37° E 70 lks. (46.2 ft.))
A yellow pine, 30 ins. diam., bears S 60° W 77 lks. (50.8 ft.) (79 lks (52.1 ft.) slope distance marked with an open burned out blaze. (Record S 64° W 79 lks. (52.1 ft.))
A pine stump hole, with a pine log lying on the ground, bears N 39° W 40 lks. (26.4 ft.) illegible scribe marks visible on an open rotted blaze on log. (Record N 41° W)
Set: An iron post, 28 ins. long, 2 1/2 ins. diam., 18 ins. in the ground with brass cap mkd. (as shown above), from which:

A black oak, 4 ins. diam., bears N 49 1/2° E 11 lks. (7.3 ft.) marked S23 BT.
A sugar pine, 6 ins. diam., bears S 51° E 72 lks. (47.5 ft.) marked T25N R9E S26 BT.
A cedar, 4 ins. diam., bears S 28 1/2° W 28 lks. (18.5 ft.) marked S27 BT.
A black oak, 6 ins. diam., bears N 12° W 97 lks. (64.0 ft.) marked T25N R9E S22 BT.

James F. Flanagan, RCE 292, 8/1969, 2 PM 86

Found: An iron pipe monument. No other information is given.

Joseph G. Brandt, RCE 26870, 2/1979, 6 PM 128

Found: 1967 Brass Cap. No other information is given.

Mark D. Filsinger, LS 4976, 4/87, 7 RS 115

Found: BLM brass cap (3 1/4 ins.) in mound of stones, with 3/4 in. I.D. iron pipe along NW side from which:

A black oak, 4 1/2 in. diam., bears N 49° E 7.2 ft. with scribing S23 BT visible. (4 in. black oak, N 49 1/2° E 11 lks. BLM 1967).
A black oak, 12 ins diam., bears S 40° E 48.2 ft. with healed face. (Cut into, no scribing found.) (6 in. black oak S 37° E 70 lks. GLO)
A sugar pine, 10 ins. diam., bears S 51° E 47.6 ft. with closed face (6 in. sugar pine, S51° E 72 lks. BLM 1967).

A cedar, 8 ins. diam., bears S 28° W 17.8 ft. (4 in. cedar bears S 28 1/2° W 28 lks. BLM 1967).
A 36 in. pine stump, bears S 58° W 51.1 ft. (20 ins. yellow pine, S 64° W 79 lks. GLO).
A black oak, 7 ins. diam., bears N 11° W 64.5 ft. with closed face. (6 in. black oak, N 12° W 97 lks. BLM 1967).

A 32 in. down pine, bears N 49° W + or - 28 ft. (24 in. yellow pine N 41° W 40 lks. GLO)

41. SECTION CORNER BETWEEN SECTIONS 22, 23, 26, 27 (continued)

Gary T. Lippincott, LS 3634, 10/1988, 8 RS 43

Found: A BLM 2 1/2 in. IP set in a mound of stone, with a 3 1/4 in. brass cap. (1967) from which:

A black oak, 4 ins. diam., bears N 49° 25' E 7.1
A sugar pine, 10 ins. diam., bears S 51° 05' E 47.6.
A cedar, 8 ins. diam., bears S 27° 33' W 18.4.
A black oak, 9 ins. diam., bears N 11° 08' W 64.4 ft.

Neil P. Campbell, PLS 4207, 2/2000, 11 RS 106

Found: 1967 BLM brass cap. No other information is given.

Wallowa Associates, 2005

Found: A BLM 2 1/2 in. IP with a 3 1/4 in. brass cap mkd. as shown, showing 6 ins. above the ground, with a rock collar from which:

A black oak, 4 ins. diam., bears N 49 1/2° E 11 lks. with a healed single blaze. BLM BT.
A black oak, 13 ins. diam., bears S 38° E 73 lks. with an open burned out blaze. Original BT.
A sugar pine, 16 ins. diam., bears S 51° E 72 lks. with a healed single blaze. BLM BT.

A cedar, 11 ins. diam., bears S 28 1/2° W 28 lks. with a healed single blaze. BLM BT.

A black oak, 9 ins. diam., bears N 12° W 97 lks. with a healed single blaze. BLM BT.

An uprooted pine, 30 ins. diam., bears S 60° W 77 lks. with no blaze evident. Original BT.

No other evidence of original BT's remain.

State Plane Coordinates CA Zone 1 (NAD83)

N 1888036.98 Ft. E 6854915.27 Ft.

Wallowa Associates
P.O. Box 847
Joseph, Oregon 97846
(541)426-9049

PLUMAS NATIONAL FOREST
EMPIRE CADASTRAL SURVEY

LOCATED WITHIN
SEC. 21, 22 & 26, T. 25 N., R. 9 E.
SEC. 15, 16, 22, 26, 29 & 32, T. 24 N., R. 10E.
Mt. Diablo Meridian, California

Table with 3 columns: SCALE, SHEET No., DATE OF SURVEY, DRAWN BY, CHECKED, PROJECT No.

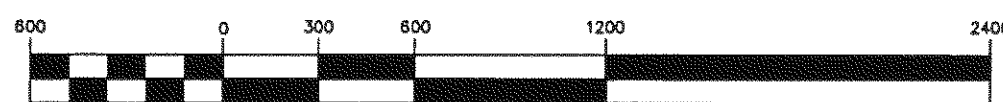
LEGEND

- Monument Found, see individual corner record.
Monument Set, see individual corner record.
Control Point
Calculated Position
N.F.S.L. National Forest System Land.
(R1) 1880, Wm. Minto, GLO Survey
(R2) 1950, Ecker, 1 RS 35
(R3) 1950, Jennings & Flanagan, 1 RS 46
(R4) 1976, Simpson, 4 RS 109
(R5) 1978, Brandt, 6 PM 128
(R6) 1988, Lippincott, 8 RS 43

Convergence at 1/4 Cor. Sec. 21 & 22, T25N, R9E = 0°40'19"
Combined scale factor = 0.999832518
(See Corner Note No. 32)

The Basis of Bearing was derived from GPS observations. State Plane Coordinates (CCS83 Zone 1) were calculated and then converted to ground bearing and distances using the given convergence angle and combined scale factor. (See Narrative on Sheet 1)

GRAPHIC SCALE



(US FEET / 1 foot = 0.304800609601 meter)
1 inch = 600 ft.