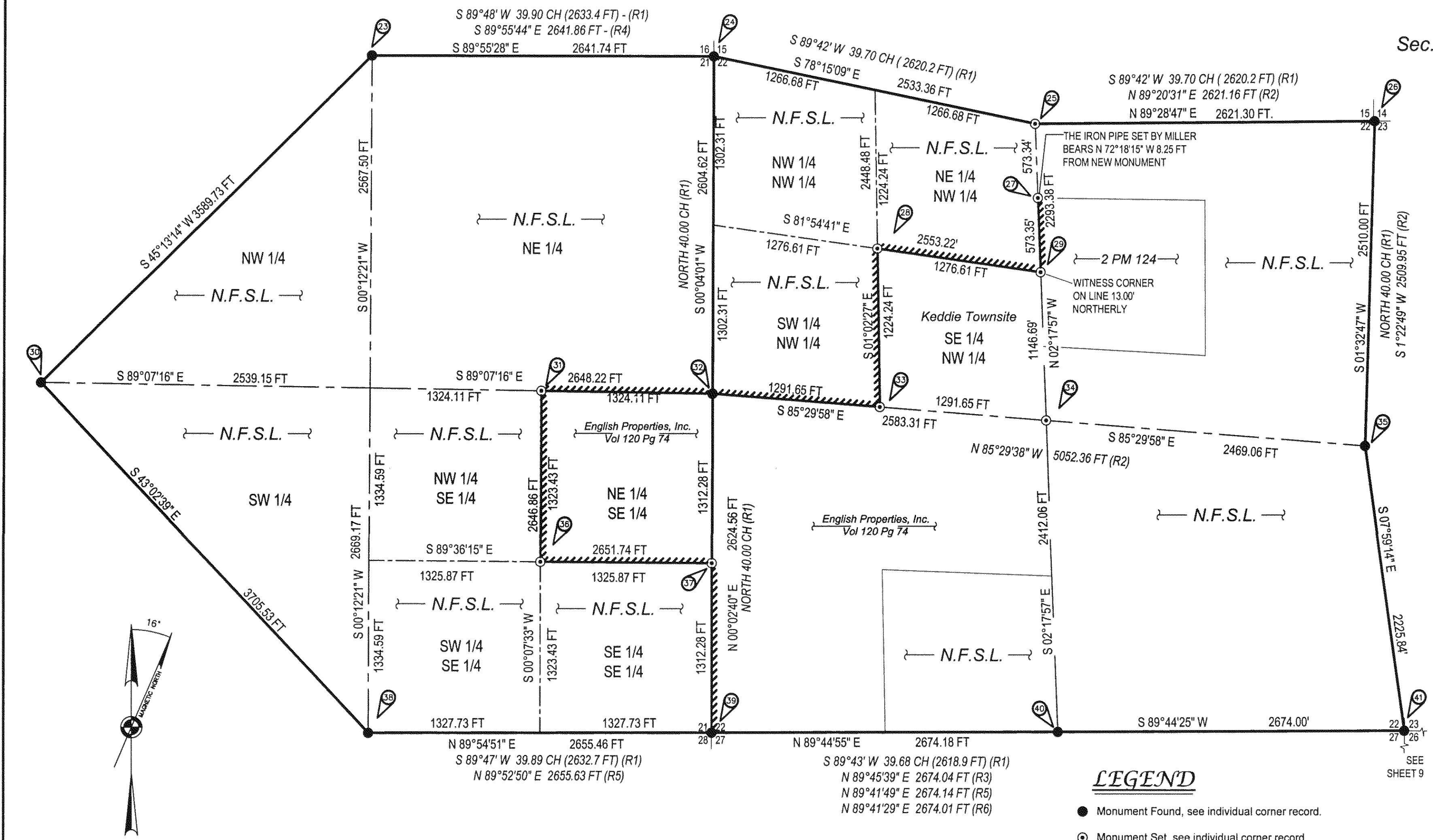


T. 25 N. R. 9 E.
SECTIONS 21 & 22

Record of Survey

Empire Cadastral Survey

Sec. 21, 22 & 26, T. 25 N., R. 9 E.
Sec. 15, 16, 22, 26, 29 & 32, T. 24 N., R. 10 E.
Mt. Diablo Meridian, California



NARRATIVE & HISTORY - SECTIONS 21 & 22

All of the controlling corners are perpetuations of the original GLO corners except for the quarter corner between Sections 22 & 27. After evaluating Filsinger's reasoning for rejecting former positions of this corner, we agree with him. There are indications that this quarter corner's position was known in 1913 when Wm. Watson subdivided the section. However, he gave only a bearing to this quarter corner. With no distance given we cannot use his survey to recreate his position of the quarter corner.

The sections were subdivided using standard procedures given in the BLM 1973 Manual.

1880 - Wm. Minto, GLO, subdivided the township.

1913 - Wm. Watson, U.S. Mineral Surveyor, did a survey of the proposed Additional Townsite in SE 1/4 of NW 1/4 of Section 22. He set a center 1/4 and other non-aliquot part corners. He set the center quarter by intersecting the North-South, East-West centerlines. However, he did not have the original East 1/4 corner. He used a proportioned position which is N 49-35 E 239 ft from the original corner. It appears that he found the South 1/4 corner, which was lost later. He gives only a bearing between the North & South 1/4 corners.

Conclusion - His centerline will not control for government land but will control for any division of the private land done using his Center 1/4.

1917 - A.J. Watson, County Surveyor, surveyed the official plat of Keddie (Bk. A, Pg. 21). He tied the North and West 1/4 corners and the C 1/4. The center 1/4 appears to be the same as set by Wm. Watson. The E-W & N-S bearings are slightly different, but the distance from the West 1/4 to the Center 1/4 is within 0.1'. A.J. Watson, set the CN 1/16 and CW 1/16 using the proper procedure (midpoint), however, the C 1/4 he used is the one set by Wm. Watson, which was set using a proportioned position rather than the original East quarter corner. A.J. Watson, calculated his NW 1/16 by running line parallel with the N-S & E-W centerlines rather than correctly subdivided the NW quarter.

Conclusion - A.J. Watson's sixteenth corners probably hold for the private land subdivision, but not for the federal lands.

1966 - Brown, USFS corner card, at the South 1/4 corner, he finds a DF w/ blazes East and North, no scribing, possibly burned out. He also finds a 3/4" iron pipe. He states "not enough evidence for a brass cap".

1967 - Sydlick, BLM, remonuments certain corners within the township, including the Northwest, Northeast, Southwest, and Southeast section corners; the West and the East 1/4 corners. (The East 1/4 corner had been proportioned in 1913).

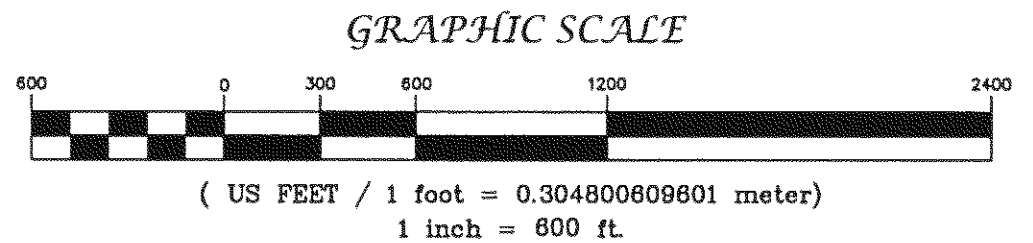
1970 - Brown, USFS corner card, finds scribing at the N 1/4 corner.

(Continued on next sheet)

LEGEND

- Monument Found, see individual corner record.
- Monument Set, see individual corner record.
- ▲ Control Point
- N.F.S.L. National Forest System Land.
- OWNER DEED Ownership Information
- Survey Line Posted (USFS Signs) and blazed
- (R1) 1880, Wm. Minto, GLO Survey
- (R2) 1970, Miller, 2 PM 124
- (R3) 1987, Filsinger, 7 RS 115
- (R4) 1986, Del Terra, Inc., 7 RS 93
- (R5) 1988, Lippincott, 8 RS 39
- (R6) 1989, Lippincott, 8 RS 96

Convergence at 1/4 Cor. Sec. 21 & 22, T25N, R9E = 0°40'19"
Combined scale factor = 0.999832518
(See Corner Note No. 32)



The Basis of Bearing was derived from GPS observations. State Plane Coordinates (CCS83 Zone 1) were calculated and then converted to ground bearing and distances using the given convergence angle and combined scale factor. (See Narrative on Sheet No. 1)

Wallowa Associates P.O. Box 847 Joseph, Oregon 97846 (541)426-9049		
PLUMAS NATIONAL FOREST EMPIRE CADASTRAL SURVEY		
LOCATED WITHIN SEC. 21, 22 & 26, T. 25 N., R. 9 E. SEC. 15, 16, 22, 26, 29 & 32, T. 24 N., R. 10 E. Mt. Diablo Meridian, California		
SCALE VARIES	SHEET No. 6 of 10	DATE OF SURVEY Beginning: NOVEMBER 2004 Ending: MAY 2005
DRAWN BY ERK DATE 6/2005	CHECKED RW/EK/RC	PROJECT No. WA 1420