

# Record of Survey

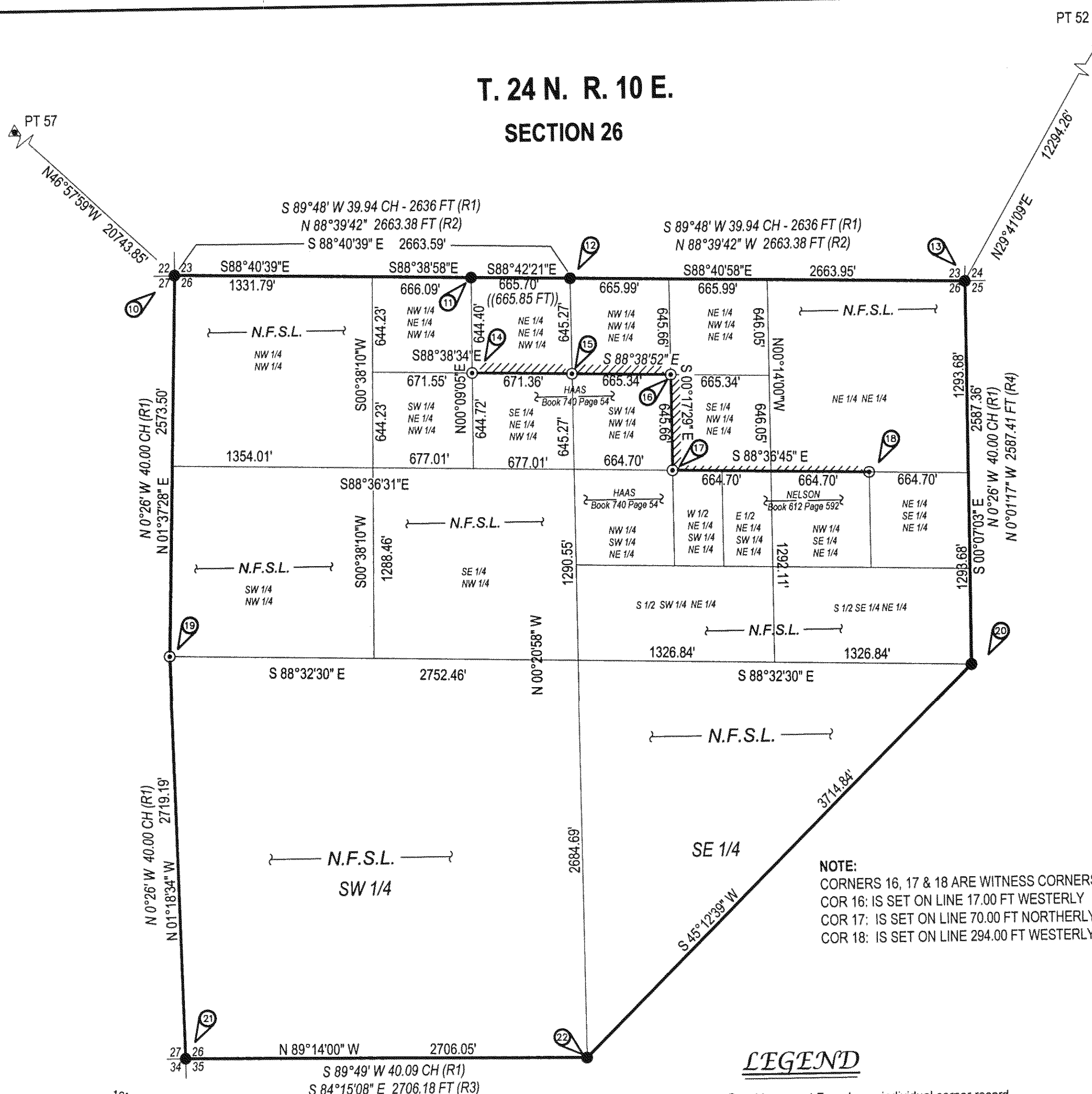
Empire Cadastral Survey

Sec. 21, 22 & 26, T. 25 N., R. 9 E.

Sec. 15, 16, 22, 26, 29 & 32, T. 24 N., R. 10E.

Mt. Diablo Meridian, California

## T. 24 N. R. 10 E. SECTION 26



### NARRATIVE - SECTION 26

**History**  
 1880 - Wm. Minto, GLO, subdivided the township  
 1971 - Adam Sydlik, Cadastral Surveyor, BLM, remonumented several corners in the township.  
 1976 - L.J. Brock, RCE 13528, 5 PM 106, tied the northwest corner of Sec 26  
 1986 - Mark D. Filsinger, LS 4976, 7 RS 103-5, surveyed the North line of Section 26.  
 1987 - Jay A. Burgess, LS470, Burgess Land Surveys, 7 RS 109, surveyed the South line of Section 26.  
 1989 - Jay A. Burgess, LS 4790, Burgess Land Surveys, 8 RS 86, surveyed the East line of Section 26.

**Procedure**  
 All of the controlling corners except the quarter corner between Sections 25 & 26 are perpetuations of the original GLO corners. We also found no evidence of the original corner or its accessories and accepted Filsinger's monument. We found Filsinger's monument for the E-W 1/4 corner between sections 23 & 26 to be very close to our calculated position. We therefore accepted the monument as set and used its position to subdivide the NE 1/4 of the NW 1/4 of Section 26. The section was subdivided using the standard procedure in the 1973 BLM Manual.

### 10. SECTION CORNER BETWEEN SECTIONS 22, 23, 26 & 27 Wm. Minto, GLO, 1880

**Set:** a volcanic stone 16 x 10 x 6 ins., from which bears a Black oak, 5 ins. diam., N 35° E, 115 lks. (75.9 ft.) dist.  
 Pitch pine, 36 ins. diam., N 71 1/2° E, 19 lks. (12.5 ft.) dist.  
 Pitch pine, 30 ins. diam., S 15° E, 30 lks. (19.8 ft.) dist.  
 Black oak, 10 ins. diam., S 63° W, 123 lks. (81.2 ft.) dist.

**Adam Sydlik, BLM, 1971**  
**Found:** volcanic stone, 19 x 13 x 8 ins., mkd. With 4 notches on one edge, embedded 4 ins. in the ground. (Record: 16 x 10 x 6 ins.), from which the remains of the original bearing trees  
 A burned pine stump, bears N 61° E, 19 lks. (12.5 ft.) dist. (Record: N 71 1/2° E)  
 A pine, 43 ins. diam., bears S 15° E, 30 lks. (19.8 ft.) dist., with burned blaze.  
 An oak stump, bears S 63° W, 128 lks. (84.5 ft.) dist., with log alongside with scribe marks TXXIVN R visible in old blaze. (Record: 123 lks. (81.2 ft.) dist.)  
**Set:** an iron post, 28 ins. long, 2 1/2 ins. diam., 24 ins. in the ground with brass cap mkd. (as shown above)

A fir, 5 ins. diam., bears N 20° E, 16 lks. (10.6 ft.) dist. mkd. "T24N R10E S23 BT".  
 A fir, 7 ins. diam., bears S 80° E, 25 lks. (16.5 ft.) dist. mkd. "T24N R10E S26 BT".  
 A fir, 8 ins. diam., bears S 60° W, 8 lks. (5.3 ft.) dist., mkd. "T24N R10E S27 BT".  
 A cedar, 8 in. diam., bears N27°W, 30 lks. (19.8 ft.) dist., mkd. "T24N R10E S22 BT"  
 Deposit mkd. Stone alongside iron post and raise mound of stone, 2 ft. base, around post to top.

### L. J. Brock, RCE 13528, 5 PM 106, 1976

**Found:** BLM cap  
 P.P. stump hole N 61° E 20 lks.  
 44 in. P.P. S 15 1/2° E 32 lks.  
 Oak stump S 65° W 131 lks.

### Mark D. Filsinger, LS 4976, 7 RS 103-5, 1986

**Found:** 3 1/4 in. brass cap in M.O.S.  
 Down 10 in. B. oak with scribing visible S 64° W 86.2 ft. (10 in. B. oak S 63° W 123 lks. - GLO)  
 9 in. B. oak with possible blaze N30°E 77.1 ft. (8 in. B oak N 38° E 115 lks. - GLO)  
 44 in. Y. pine with healed blaze S19°E 20.8 ft. (30 in. P. pine S15°E 30 lks. - GLO)  
 Stump hole N 60° E 13.5 ft. (36 in. P. pine N 71 1/2° E 19 lks. - GLO)  
 6 in. fir with healed blaze N 21° E 10.4 ft. (5 in. fir N 20° E 16 lks. - BLM)  
 9 in. W. fir with healed blaze S 80° E 16.3 ft. (7 in. fir S 80° E 25 lks. - BLM)  
 9 in. W. fir with healed blaze S 58° W 5.4 ft. (8 in. fir S 60° W 8 lks. - BLM)  
 10 in. cedar with blaze and scribing visible N 27 1/2° W 19.9 ft. (8 in. cedar N 27° W 30 lks. - BLM)

### SURVEYOR'S NOTES:

All new BTs have BT (bearing tree) signs, an aluminum nail side center for distance measurement, and a 6 in. red band, painted faces. New BTs at quarter and section corners have LSM (land survey monument) signs. These items were added to existing BTs as needed. A post with LSM sign was placed near the monuments.

Unless otherwise noted, bearings and distances to new BTs were measured using a Warren Knight staff compass with tripod, a logger's tape, diameter tape, and clinometer. Bearings to BTs at corner not needing new accessories were checked against the record with a hand compass. The declination was determined to be 16° E using the NOAA web site.

Record and measured distances to BTs are to the side center of tree unless otherwise noted.

### 10. SECTION CORNER BETWEEN SECTIONS 22, 23, 26 & 27 (CONTINUED)

#### Wallowa Associates, 2004

**Found:** Standard BLM brass cap mkd. as shown, flush with the ground. Also find a single rock, 19 x 13 x 8 ins., on the East side of the cap. It is probably the original, but we see no marks. From which

- The 1880 BTs
  - Find no evidence of the NE black oak BT.
  - A burned pine stump bears N 61° E 19 lks.
  - A ponderosa pine, 47 ins. diam., bears S 15° E 30 lks.
  - Find no evidence of the SW BT.
- The 1971 BTs
  - A fir, 6 ins. diam., bears N 20° E 16 lks.
  - A dead & down fir, 8 ins. diam., bears S 80° E 25 lks., a slab is on the ground with visible scribing.
  - A fir, 10 ins. diam., bears S 60° W 8 lks., with a healed blaze.
  - A cedar, 12 ins. diam., bears N 27° W 30 lks., partially healed face with scribing visible.

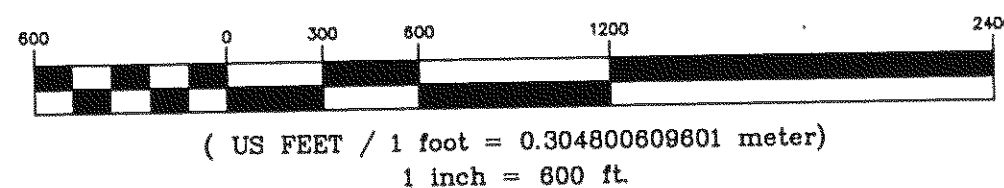
State Plane Coordinates CA Zone 1 (NAD83)  
 N 1856724.34 Ft. E 6886879.48 Ft.

**NOTE:**  
 CORNERS 16, 17 & 18 ARE WITNESS CORNERS  
 COR 16: IS SET ON LINE 17.00 FT WESTERLY  
 COR 17: IS SET ON LINE 70.00 FT NORTHERLY  
 COR 18: IS SET ON LINE 294.00 FT WESTERLY

### LEGEND

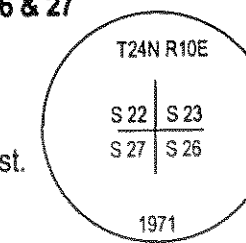
- Monument Found, see individual corner record.
- Monument Set, see individual corner record.
- ▲ Control Point
- WC Witness Corner
- N.F.S.L. National Forest System Land.
- Survey Line Posted (USFS Signs) and blazed
- OWNER DEED Ownership Information
- (R1) 1880 Wm. Minto, GLO Survey
- (R2) 1886 Filsinger Survey (7RS 103-5)
- (R3) 1987 Burgess Survey (7RS 109)
- (R4) 1989 Burgess Survey (8RS 86)


### GRAPHIC SCALE



The Basis of Bearing was derived from GPS observations. State Plane Coordinates (CCS83 Zone 1) were calculated and then converted to ground bearing and distances using the given convergence angle and combined scale factor. (See Narrative on Sheet 1)

Convergence at 1/4 Cor. Sec 15 & 22, T24N, R10E = 0°45'09"  
 Combined scale factor = 0.999832863  
 (See Corner Note No. 7)



 <b>Wallowa Associates</b> P.O. Box 847 Joseph, Oregon 97846 (541) 426-9049		
<b>PLUMAS NATIONAL FOREST</b> <b>EMPIRE CADASTRAL SURVEY</b>		
LOCATED WITHIN SEC. 21, 22 & 26, T. 25 N., R. 9 E. SEC. 15, 16, 22, 26, 29 & 32, T. 24 N., R. 10E. Mt. Diablo Meridian, California		
SCALE VARIES	SHEET No. 4 of 10	DATE OF SURVEY Beginning: NOVEMBER 2004 Ending: MAY 2006
DRAWN BY ERK DATE 6/2005	CHECKED RW/EK/RC	PROJECT No. WA 1420