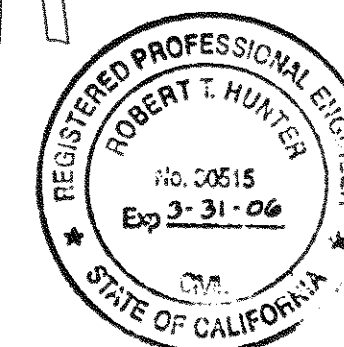




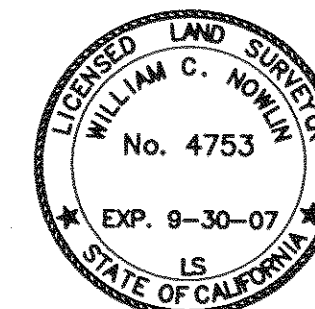
**BASIS OF BEARINGS**

CALIFORNIA ZONE 1, NAD 83 GRID BEARINGS DERIVED FROM FAST STATIC G.P.S. OBSERVATIONS.  
 EPOCH DATE: 2002.00  
 ADJUSTMENT DATE: 7-20-05  
 MAPPING ANGLES SHOWN AT CORNER NUMBERS 14 AND 23.  
 ALL DISTANCES SHOWN AS MEASURED ARE GRID DISTANCES. TO CONVERT TO GROUND, DIVIDE DISTANCES SHOWN BY 0.999774.



**SURVEYOR'S STATEMENT**

THIS MAP CORRECTLY REPRESENTS A SURVEY MADE BY ME OR UNDER MY DIRECTION IN CONFORMANCE WITH THE REQUIREMENTS OF THE PROFESSIONAL LAND SURVEYORS' ACT AT THE REQUEST OF SIERRA PACIFIC INC. IN JULY, 2005.



SIGNED *William C. Nowlin*  
 WILLIAM C. NOWLIN L.S. 4753

**COUNTY SURVEYOR'S STATEMENT**

THIS MAP HAS BEEN EXAMINED IN ACCORDANCE WITH SECTION 8766 OF THE PROFESSIONAL LAND SURVEYORS' ACT THIS 9<sup>th</sup> DAY OF Sept., 2005.

SIGNED *Tom Hunter*  
 TOM HUNTER R.C.E. 30515  
 PLUMAS COUNTY SURVEYOR  
 REG. EXP. 3/31/06

**COUNTY RECORDER'S STATEMENT**

FILED THIS 9<sup>th</sup> DAY OF Sept, 2005, AT 11:44 A. M., IN BOOK 13 OF RECORD OF SURVEYS AT PAGE(S) 121, 123 AT THE REQUEST OF THE PLUMAS COUNTY SURVEYOR.

PLUMAS COUNTY RECORDER  
 KATHLEEN WILLIAMS

BY *Janis Gross*  
 DEPUTY

FEE 10<sup>00</sup> DOC.# 2005-9644

**RECORD OF SURVEY**

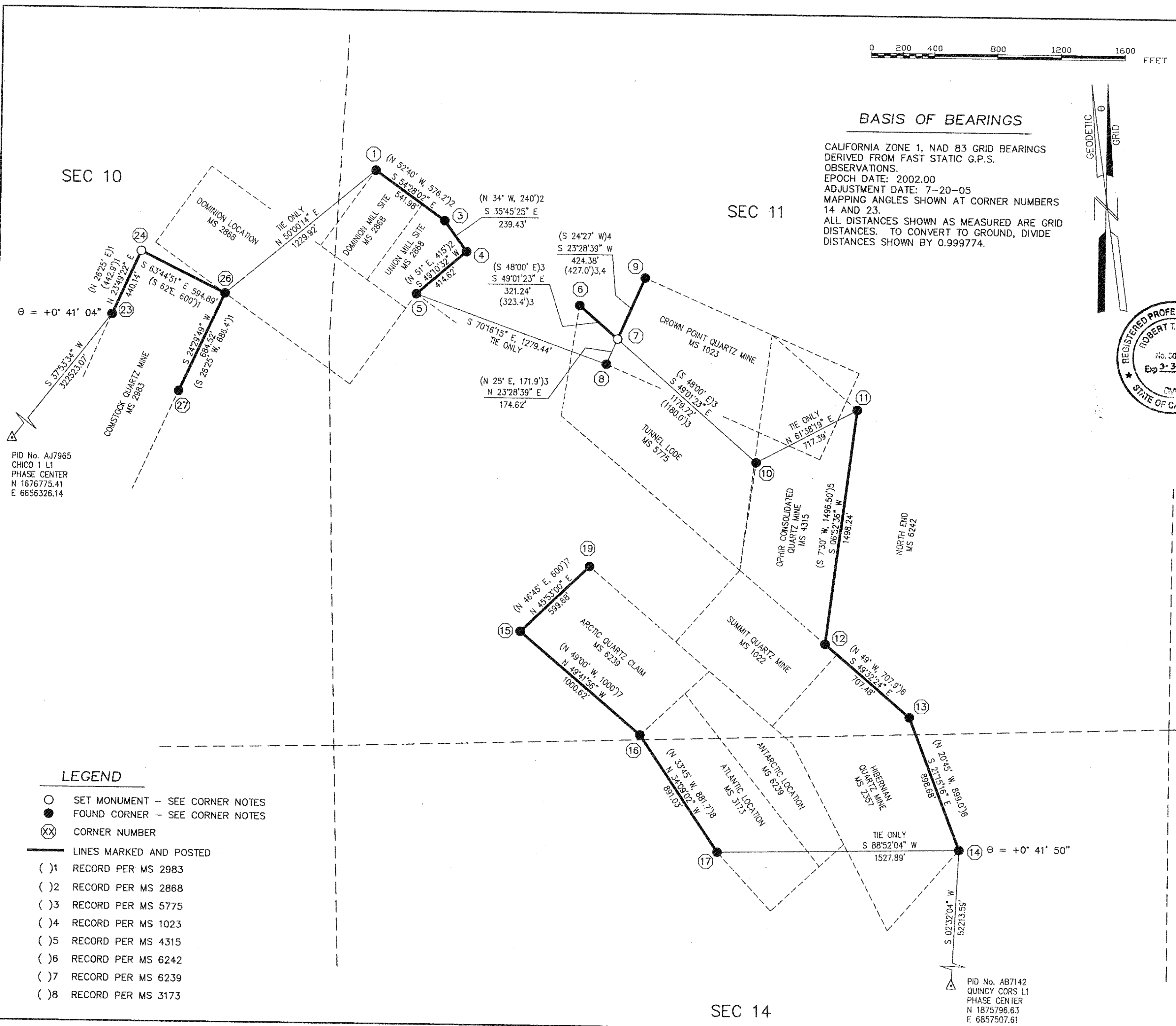
FOR

SIERRA PACIFIC, INC.  
 "GREENVIEW THP"

IN SECTIONS 10, 11 AND 14,  
 T 26 N., R 9 E., MDM,  
 IN THE UNINCORPORATED AREA OF  
 PLUMAS COUNTY,  
 STATE OF CALIFORNIA



SCALE: 1" = 400' DATE: JULY, 2005  
 SHEET 1 OF 2



SEC 10

SEC 11

SEC 14

PID No. AJ7965  
 CHICO 1 L1  
 PHASE CENTER  
 N 1676775.41  
 E 6656326.14

PID No. AB7142  
 QUINCY CORS L1  
 PHASE CENTER  
 N 1875796.63  
 E 6857507.61

**LEGEND**

- SET MONUMENT - SEE CORNER NOTES
- FOUND CORNER - SEE CORNER NOTES
- ⓧ CORNER NUMBER
- LINES MARKED AND POSTED
- ( ) 1 RECORD PER MS 2983
- ( ) 2 RECORD PER MS 2868
- ( ) 3 RECORD PER MS 5775
- ( ) 4 RECORD PER MS 1023
- ( ) 5 RECORD PER MS 4315
- ( ) 6 RECORD PER MS 6242
- ( ) 7 RECORD PER MS 6239
- ( ) 8 RECORD PER MS 3173