

Record of Survey

Empire Cadastral Survey

Sec. 25 & 36, T. 25 N., R 10 E

Sec. 7, 9, 10, 15, 16 & 17, T. 24 N., R. 11 E.

Mt. Diablo Meridian, CA

T. 24 N., R. 11 E.

12. Quarter Corner Between Sections 9 & 10 Wm. Minto, GLO, 1880

Set: a granite stone 14 x 7 x 5 from which bears a:
Red fir, 12 ins. dia., S 88° E 65 lks. (42.9 ft.) dist.
Red fir, 36 ins. dia., S 60° W, 49 lks. (32.3 ft.) dist.

Adam Sydlik, BLM, 1969

Found: a granite stone, 12 x 6 x 5 ins., marked 1/4 on the W face, set in an old embedded mound of stone, 2 1/2 ft. diam., 6 ins. high from which the original bearing trees:

A red fir, 31 ins. diam., bears N 88° E 65 lks. (42.9 ft.) dist., with overgrown blaze. (Record: S 88° E)

A red fir, 49 ins. diam., bears S 55° W, 51 lks. (33.7 ft.) dist., with scribe marks S BT visible on old open blaze. (Record: S 60° W, 49 lks. (32.3 ft.) dist.)

Set: an iron post, 28 ins. long, 2 1/2 ins. diam., 20 ins. in the ground, with brass cap, from which

A red fir, 17 ins. diam., bears S 33° W, 80 lks. (52.8 ft.) dist., mkd. 1/4 S9 BT

Wallowa Associates, 2004

Found: a 3 1/4 in. standard BLM brass cap flush with the ground.

A red fir 37 ins. diam., with healed blaze, bears N 89 1/2° E 42.9 ft. (Record: N 88° E - (BLM), S 88° E - (GLO)) (original)

A red fir, approx. 17 ins. diam., dead, down & very rotten, bears S 33° W 52.8 ft., with full scribing visible. (BLM)

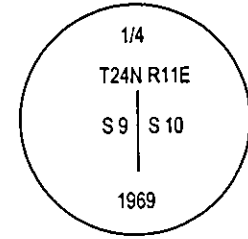
A red fir snag, 47 ins. diam., approx. 10 ft. tall, with no visible marks, bears S 60° W 33.2 ft. (Record 32.3 ft.) (original)

Set:

A 5/8 in. x 24 in. rebar, with 2 in. alum. cap 4 ins. above ground, marked "WA RM 26.1 LS 6501 2004" bears N 13° W 26.1 ft.

State Plane Coordinates, CA Zone 1

N 1871260.42 Ft. E 6914977.20 Ft.



13. Quarter Corner Between Sections 9 & 16 Wm. Minto, GLO, 1880

Set: a granite stone 16 x 14 x 10 from which bears a:
Fir, 12 ins. dia., S 9° E, 20 lks. (13.2 ft.) dist.
Fir, 9 ins. dia., N 84° W 42 lks. (27.72 ft.) dist.

Adam Sydlik, BLM, 1969

Found: a granite stone, 13 x 13 x 11 ins., marked 1/4 on the W face, set in an old mound of stone, 3 ft. diam., 10 ins. high, from which the remains of the original bearing tree

An uprooted fir snag, bears S 9° E, 20 lks. (13.2 ft.) dist., with scribe marks 1/4 visible in old open blaze.

Set: an iron post, 28 ins. long, 2 1/2 ins. diam., 18 ins. in the ground, with brass cap, from which:

A white fir, 30 ins. diam., bears S 17° E, 85 lks. (56.1 ft.) dist., mkd. 1/4 S16 BT

A white fir, 32 ins. diam., bears N 27° W, 68 lks. (44.9 ft.) dist., mkd. 1/4 S9 BT

Deposit stone alongside iron post and rebuild the mound of stone, 3 ft. base, around post to top.

Wallowa Associates, 2004

Found: standard 3 1/4 in. BLM brass cap in a rock collar flush with the ground.

Original GLO BTs:

A possible stump hole at record bearing & distance for original SE BT
No evidence of original NW BT

BLM 1969 BTs:

A white fir, 37 ins. diam., alive & healthy with healed blaze, bears S 17° E 56.1 ft. (BLM 1969)

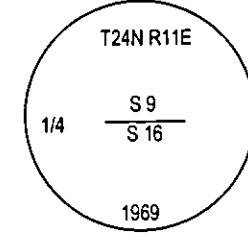
A white fir stump, 32 in. diam. x 6 ft. high, with open blaze and visible scribing, bears N 27° W 44.9 ft. (BLM 1969)

Other:

A scared tree with 54-4 sign bears S 60° W +/- 27 ft., opened scar no scribing visible.

State Plane Coordinates, CA Zone 1

N 1868611.86 Ft. E 6912285.73 Ft.



14. Section Corner Between Sections 9, 10, 15 & 16 Wm. Minto, GLO, 1880

Set: a granite stone 17 x 10 x 7 from which bears a:
Fir, 28 ins. dia., N 71° E 63 lks. (41.6 ft.) dist.
Fir, 24 ins. dia., S 63° E, 32 lks. (21.1 ft.) dist.
Fir, 33 ins. dia., N 40° W 17 lks. (11.22 ft.) dist.

O. Brown, USFS, 1968, Corner Card

Found: 3 stones found under log, not corner stone.

Fir snag w/ chopped out blaze facing SW

A S. P. w/ chopped out blaze facing SW, also k tag "This tree is BT"

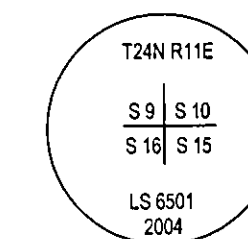
(No evidence of scribing either tree)

A W F with old blue K tag facing E.

Trees do not fit record bearings distances.

Not considered a good cor. No attn. Signs or BT tags placed.

(Continued next column)



Section Corner Between Sections 9, 10, 15 & 16 (continued) Wallowa Associates, 2004

Found: Looked at evidence that Brown had rejected in 1968, and agreed with him that they were not original bearing trees or a perpetuation of the original corner. After a thorough search of area and finding no evidence of original corner, I determine the corner to be lost.

Set: by double proportionate measurement I set a 3 1/4 in. alum. cap, on a 2 1/2 in. alum. pipe with break away base, 20 ins. in the ground. Build a stone mound 2 1/2 ft. base x 1 ft. high.

A white fir, 8 ins. diam., bears N 70° E 40.3 ft. mkd. "X BT".

A red fir, 21 ins. diam., bears S 4 1/4° E 77.1 ft. mkd. "T24N R11E S15 BT".

A white fir, 19 ins. diam., bears S 60° W 91.0 ft., mkd. "T24N 11E S16 BT". (no R in scribing)

A white fir, 17 ins. diam., N 24° W 46.4 ft., mkd. "T24N R11E S9 BT".

State Plane Coordinates, CA Zone 1

N 1868618.86 Ft. E 6914897.53 Ft.

15. Quarter Corner Between Sections 10 & 15 Wm. Minto, GLO, 1880

Set: a granite stone 15 x 14 x 10 from which bears a:
Spruce, 15 ins. dia., N 8 1/2° E 22 lks. (14.5 ft.) dist.
Spruce, 25 ins. dia., S 14 1/2° E, 18 lks. (11.9 ft.) dist.

Adam Sydlik, BLM, 1969

Found:

A red fir, 41 ins. diam., bears S 14 1/2° E, 18 lks. (11.9 ft.) dist., with scribe mark B visible on old open blaze. (Record: Spruce) from which:

Set: an iron post, 28 ins. long, 2 1/2 ins. diam., 18 ins. in the ground, with brass cap,

A white fir, 3 ins. diam., bears N 42° E, 26 lks. (17.2 ft.) dist., mkd. 1/4 S10 BT

Raise a mound of quartz stone, 3 ft. base, around post to top.

Wallowa Associates, 2004

Found: a standard 3 1/4 in. BLM brass cap showing 1 in. above ground, with rock collar.

The original NE BT is gone.

A white fir, 4 ins. diam., dead, down & very rotten, bears approx. N 42° E 17.2 ft.

scribing has rotted away. (BLM)

A red fir stump 5 ft. tall, 41 ins. diam., bears S 14 1/2° E 13.4 ft. (Record: 11.9 ft.

probably to face) Chopped open face, no marks visible. (original)

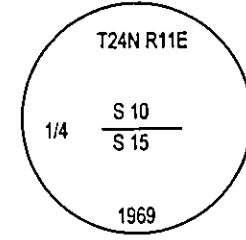
Set:

A 5/8 in. x 24 in. rebar with 2 in. alum. cap marked "WA RM 9.8 LS6501 2004" bears S 54° W 9.8 ft.

A 5/8 in. x 24 in. rebar with 2 in. alum. cap marked "WA RM 12.4 LS6501 2004" bears N 29 1/2° W 12.4 ft.

State Plane Coordinates, CA Zone 1

N 1868568.63 Ft. E 6917515.40 Ft.



16. Quarter Corner Between Sections 15 & 16 Wm. Minto, GLO, 1880

Set: a granite stone 12 x 12 x 5 from which bears a:
Fir, 28 in. dia., S 78 1/2° E 61 lks. (40.3 ft.) dist.
Fir, 10 in. dia., N 84 1/2° W, 31 lks. (20.5 ft.) dist.

Adam Sydlik, BLM, 1969

Found:

An uprooted fir snag and stump, bears S 78 1/2° E 61 lks. (40.3 ft.) dist., with inverted scribe marks BT visible on portion of the stump.

Set: an iron post, 28 ins. long, 2 1/2 ins. diam., 20 ins. in the ground, with brass cap, from which

A white fir, 22 ins. diam., bears N 12° E, 36 lks. (23.8 ft.) dist., mkd. 1/4 S15 BT

A white fir, 7 ins. diam., bears N 83° W, 40 lks. (26.4 ft.) dist., mkd. 1/4 S16 BT

Raise a mound of stone, 2 1/2 ft. base, around post to top.

Wallowa Associates, 2004

Found: standard 3 1/4 in. BLM brass cap, flush with rock collar.

Original GLO BTs:

Remains of a dead & down fir bears S 78 1/2° E 40.3 ft.

No evidence of original NW BT

BLM 1969 BTs:

A white fir, 38 ins. diam., alive & healthy with healed blaze, bears N 12° E 23.8 ft.

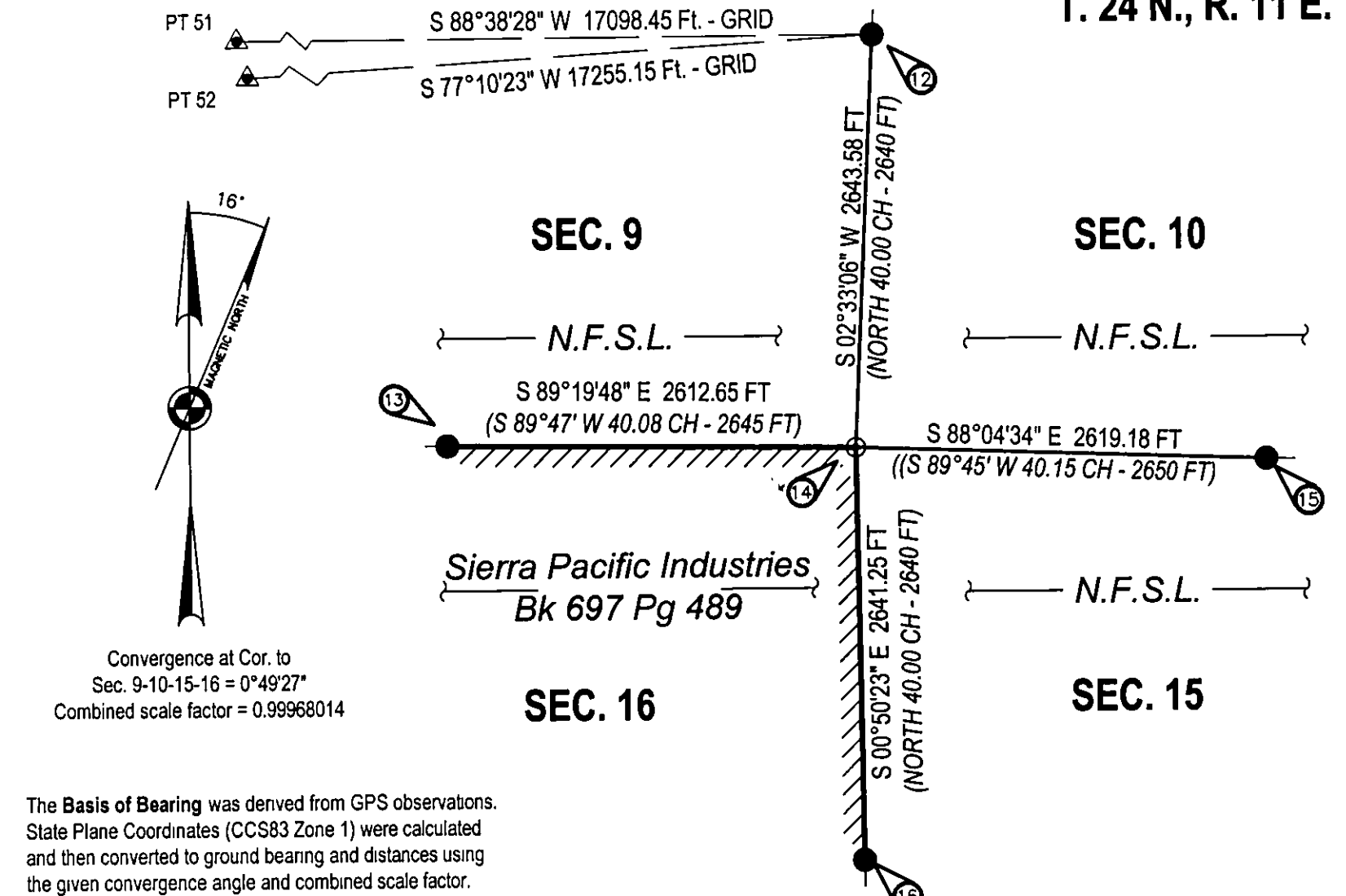
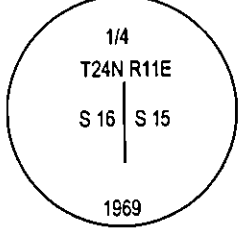
A white fir, 18 ins. diam., alive & healthy with healed blaze, bears N 83° W 26.4 ft.

Other:

A white fir, 37 ins. diam., with healed damage toward monument and BT signs, bears N 84 1/2° W 7 ft.

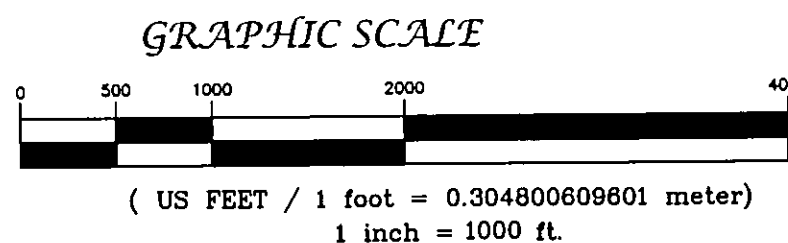
State Plane Coordinates, CA Zone 1

N 1865979.59 Ft. E 6914974.20 Ft.



Convergence at Cor. to Sec. 9-10-15-16 = 0°49'27" Combined scale factor = 0.99968014

The Basis of Bearing was derived from GPS observations. State Plane Coordinates (CCS83 Zone 1) were calculated and then converted to ground bearing and distances using the given convergence angle and combined scale factor.



NARRATIVE - SECTION 9, 10, 15 & 16, T. 24 N., R. 11 E.

History

1880 - Wm. Minto, GLO, subdivided the township

1969 - Adam Sydlik, Cadastral Surveyor, BLM, remonumented several corners in the township.

Procedure

After a diligent search, and not finding the corner for Sections 9, 10, 15 & 16 we set the corner by double proportioning as per the 1973 BLM Manual.

SURVEYOR'S NOTES:

All new BTs have BT (bearing tree) signs, an aluminum nail side center for distance measurement, and a 6 in. red band, painted faces. New BTs at quarter and section corners have LSM (land survey monument) signs. These items were added to existing BTs as needed. A post with LSM sign was placed near the monuments.

Unless otherwise noted, bearings and distances to new BTs were measured using a staff compass with tripod, a logger's tape, diameter tape, and clinometer; or a total station. Bearings to BTs at corner not needing new accessories were checked against the record with a hand compass. The declination was determined to be 16° E using the NOAA web site.

The distances measured to recovered bearing trees are to the side center of the tree, unless noted otherwise. The record distances to recovered bearing trees were returned by this survey, unless the record was found to exceed the inherent discrepancy expected when allowing for the conversion of links to feet. The record bearings to recovered bearing trees were returned by this survey, unless the record was found to exceed the inherent discrepancy expected when using hand held compasses to verify record calls.

LEGEND

● Monument Found, see individual corner record.

⊙ Monument Set, see individual corner record.

▲ Control Point

N.F.S.L. National Forest System Land.

OWNER DEED Ownership Information

Survey line Posted (USFS signs) and Blazed.

(Italics) 1880 GLO Survey

Wallowa Associates P.O. Box 847 Joseph, Oregon 97846 (541)426-9049		
PLUMAS NATIONAL FOREST EMPIRE CADASTRAL SURVEY		
LOCATED WITHIN SEC. 26 & 36, T. 25 N., R. 10E. SEC. 7, 9, 10, 15, 16 & 17, T. 24 N., R. 11 E. Mt. Diablo Meridian, California		
SCALE VARIES	SHEET No. 4 of 9	DATE OF SURVEY Beginning: SEPTEMBER 2004 Ending: NOVEMBER 2004
DRAWN BY ERK DATE 1/2005	CHECKED RW/EK/RC	PROJECT No WA 1420