

**SURVEYOR'S NOTE**

IN THE COURSE OF THIS SURVEY, SEVERAL DISAGREEMENTS WITH RECORD MAPS WERE DISCOVERED.

**SECTIONS 7 & 8, T. 23 N., R. 7 E.**

INTERIOR CORNERS SET BY R.C.E. 13528 AND RECORDED IN BOOK 6 OF RECORD OF SURVEYS AT PAGE 42 WERE TIED. TWO OF THESE CORNERS WERE OUT OF RECORD POSITION, ONE BY 24 FEET AND ONE BY 100 FEET. THE FOREST SERVICE REQUESTED THAT I DO A THOROUGH RETRACEMENT OF THE CONTROLLING CORNERS TO DETERMINE IF ANY OTHER DISCREPANCIES EXISTED. THERE WERE NO MAJOR PROBLEMS FOUND, BUT SMALL DIFFERENCES WERE ENCOUNTERED, AND NEW POSITIONS WERE MONUMENTED AT OTHER INTERIOR CORNERS.

**SECTION 3, T. 23 N., R. 7 E.**

A SECTION BREAKDOWN WAS PERFORMED BY LS 4207 IN 1999, AND RECORDED IN BOOK 11 OF RECORD OF SURVEYS AT PAGE 98. I FOUND SEVERAL PROBLEMS ON THIS MAP. THE ESTABLISHMENT OF THE WEST ONE-QUARTER CORNER WAS MADE FROM WHAT WAS CALLED AN ORIGINAL BEARING TREE, A 42" FIR (THE ORIGINAL GLO SURVEYS CALLED TAMARACK BEARING TREES.) THIS TREE HAD AN OLD CHOPPED OUT BLAZE FROM APPROXIMATELY 20 YEARS AGO. IT SHOWED A FLAT FACE, BUT NO SCRIBING WAS VISIBLE. THERE IS AN OLD BEARING TREE SIGN ON THIS TREE, BUT IT IS NOT FILLED OUT OR DATED, SO IT'S ORIGIN CANNOT BE PLACED. THE POSITION OF THIS TREE RELATIVE TO THE NEARBY ROAD LEADS ME TO BELIEVE THIS SCAR MAY HAVE COME FROM ROAD CONSTRUCTION EQUIPMENT. ORVILLE BROWN, A FOREST SERVICE SURVEY TECH, SEARCHED FOR THIS CORNER WITHOUT SUCCESS IN 1976. NO OTHER OLDER RECORD EXISTS AS TO USAGE OF THIS TREE AS A BEARING TREE.

I ALSO FOUND A DISCREPANCY IN THE MEASUREMENT TO THE NORTH AND EAST ONE-QUARTER CORNERS. THESE POSITIONS WERE CORRECTLY ESTABLISHED BY LS 5623 IN 1995 AND ARE SHOWN ON HIS MAP RECORDED IN 2003 IN BOOK 12 OF RECORD OF SURVEYS AT PAGE 126. THE POSITION SHOWN BY LS 4207 FOR THE EAST ONE-QUARTER OF SECTION 3 DOES NOT MATCH L.S. 5623 RECORD BY APPROXIMATELY 16 FEET BY 20 FEET. I TIED THE REST OF THE CONTROLLING CORNERS IN THE SECTION AND MATCHED THE RECORD OF L.S. 5623 CLOSELY.

IN LIGHT OF THESE PROBLEMS, I REJECTED THE SURVEY BY LS 4207 BUT INCLUDED SELECTED RECORD MEASUREMENTS HEREON TO ILLUSTRATE THE DISCREPANCIES.

**SURVEY HISTORY**

1875 - E A VON SCHMIDT SURVEYS THE EXTERIOR LINES AND SUBDIVISION LINES OF T. 23 N., R. 7 E.

1880 - WILLIAM MINTO RETRACES THE NORTH LINE OF T. 23 N., R. 7 E., THE WEST AND SOUTH LINES OF SECTION 2 AND THE SOUTH LINE OF SECTION 1, T. 23 N., R. 7 E.

1960-1985 - SEVERAL SURVEYS WERE PERFORMED IN SECTION 2, T. 23 N., R. 7 E., NONE OF WHICH ENTAIL A COMPLETE SECTION BREAKDOWN.

1985 - LAWRENCE BROCK, R.C.E. 13528, SURVEYS SECTIONS 7 AND 8, T. 23 N., R. 7 E. FOR PLUMAS COUNTY BOARD OF SUPERVISORS. MAP RECORDED IN BOOK 6 OF RECORD OF SURVEYS AT PAGE 42 IN JANUARY, 1982.

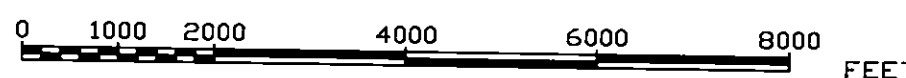
1995 - WILLIAM SNOW, L.S. 5623, SURVEYS SECTION 1, T. 23 N., R. 7 E. FOR THE FOREST SERVICE. MAP RECORDED IN BOOK 12 OF RECORD OF SURVEYS AT PAGE 126 IN JUNE, 2003.

1999 - NEIL CAMPBELL, L.S. 4207, SURVEYS SECTION 2, T. 23 N., R. 7 E. FOR DAVID NORTON. MAP RECORDED IN BOOK 11 OF RECORD OF SURVEYS AT PAGE 98 IN DECEMBER, 1999.

2001 - GERALD TIBBEDEAUX, L.S. 6051, SURVEYS NORTON SUBDIVISION FOR DAVID NORTON, USING THE BREAKDOWN OF SECTION 2 FROM L.S. 4207. MAP RECORDED IN BOOK 9 OF MAPS AT PAGE 49 IN 2001.

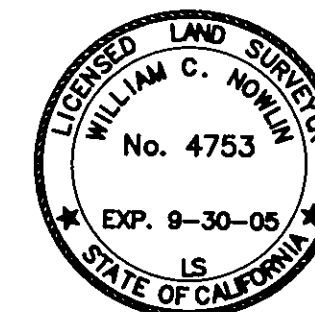
**BASIS OF BEARINGS**

CALIFORNIA ZONE 1, NAD 83 GRID BEARINGS DERIVED FROM FAST STATIC G.P.S. OBSERVATIONS.  
EPOCH DATE: 2002.00  
ADJUSTMENT DATE: 2004.71  
MAPPING ANGLES SHOWN AT CORNER NUMBERS 14 AND 22.  
ALL DISTANCES SHOWN AS MEASURED ARE GRID DISTANCES. TO CONVERT TO GROUND, DIVIDE DISTANCES SHOWN BY 0.9997725.

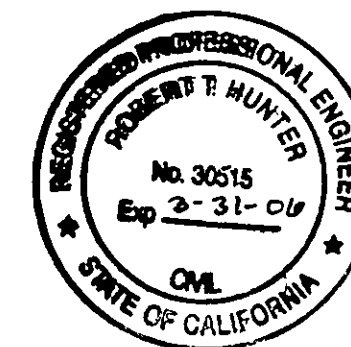


**SURVEYOR'S STATEMENT**

THIS MAP CORRECTLY REPRESENTS A SURVEY MADE BY ME OR UNDER MY DIRECTION IN CONFORMANCE WITH THE REQUIREMENTS OF THE PROFESSIONAL LAND SURVEYORS' ACT AT THE REQUEST OF THE US FOREST SERVICE IN SEPTEMBER, 2004



SIGNED *William C. Nowlin*  
WILLIAM C. NOWLIN L.S. 4753



**COUNTY SURVEYOR'S STATEMENT**

THIS MAP HAS BEEN EXAMINED IN ACCORDANCE WITH SECTION 8766 OF THE PROFESSIONAL LAND SURVEYORS' ACT THIS 14<sup>th</sup> DAY OF February, 2005.

SIGNED *R. Tom Hunter*  
TOM HUNTER R.C.E. 30515  
PLUMAS COUNTY SURVEYOR  
REG. EXP. 3/31/06

**COUNTY RECORDER'S STATEMENT**

FILED THIS 14<sup>th</sup> DAY OF February, 2005, AT 3:34 P. M., IN BOOK 13 OF RECORD OF SURVEYS AT PAGE(S) 92-95, AT THE REQUEST OF THE PLUMAS COUNTY SURVEYOR.

PLUMAS COUNTY RECORDER  
KATHLEEN WILLIAMS

BY *Dee A. Peay*  
DEPUTY

FEE 14<sup>00</sup> DOC.# 2005-1605

**RECORD OF SURVEY**

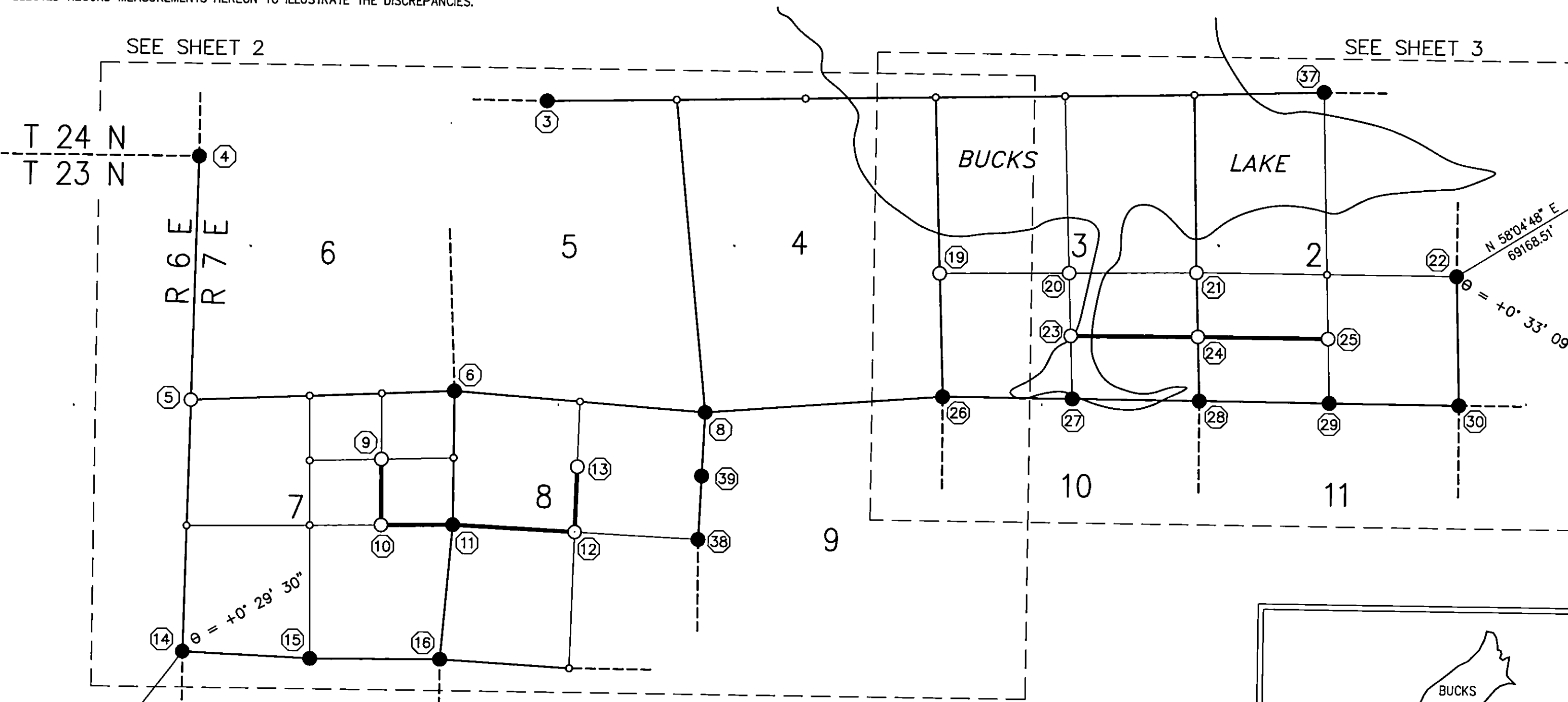
FOR

USDA FOREST SERVICE  
PLUMAS NATIONAL FOREST  
"BASIN"

IN SECTIONS 2, 3, 4, 5, 6, 7, 8, 9, 10 AND 11,  
T. 23 N., R. 7 E., MDM,  
IN THE UNINCORPORATED AREA OF  
PLUMAS COUNTY,  
STATE OF CALIFORNIA



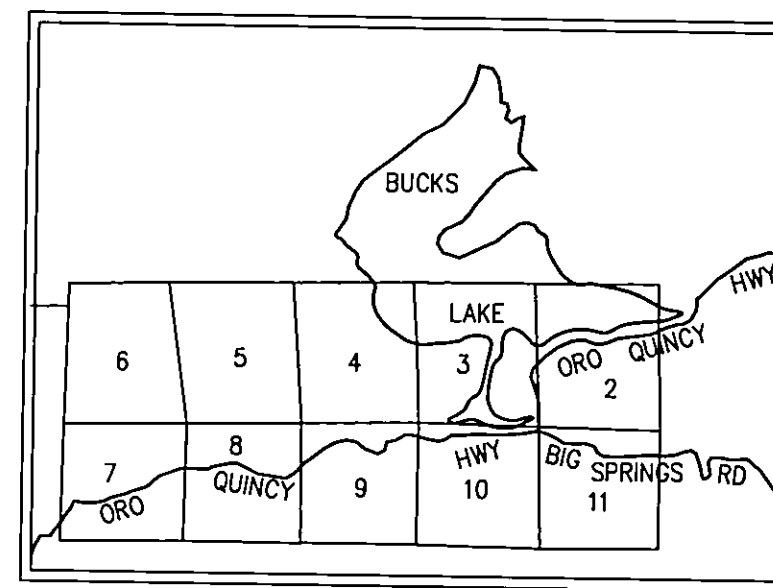
SCALE: 1" = 2000' DATE: NOVEMBER, 2004  
SHEET 1 OF 4



CHICO 1 CORS  
L1 PHASE CENTER  
N 1676775.41  
E 6656326.15

- LEGEND**
- SET MONUMENT - SEE CORNER NOTES
  - FOUND CORNER - SEE CORNER NOTES
  - CALCULATED POINT
  - ⊗ CORNER NUMBER
  - LINES MARKED AND POSTED

**NOTE:**  
CALCULATIONS FOR CORNERS ORIGINALLY SET BY THE GLO PERFORMED USING BLM'S "CMM" PROGRAM WHICH WORKS USING GEODETIC COORDINATES. THE CLOSER A LINE IS TO EAST-WEST THE MORE PRONOUNCED IT'S APPARENT CURVE, AND ON THE GRID, POINTS ALONG THESE CURVED LINES APPEAR AS ANGLE POINTS.



VICINITY MAP