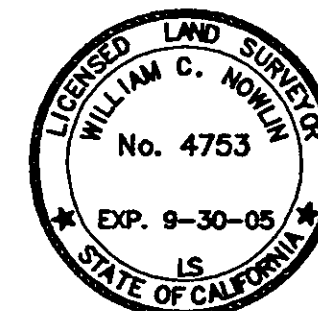


SURVEYOR'S STATEMENT

THIS MAP CORRECTLY REPRESENTS A SURVEY MADE BY ME OR UNDER MY DIRECTION IN CONFORMANCE WITH THE REQUIREMENTS OF THE PROFESSIONAL LAND SURVEYORS' ACT AT THE REQUEST OF W M BEATY & ASSOCIATES IN MAY, 2004.



SIGNED William C. Nowlin
WILLIAM C. NOWLIN L.S. 4753

COUNTY SURVEYOR'S STATEMENT

THIS MAP HAS BEEN EXAMINED IN ACCORDANCE WITH SECTION 8766 OF THE PROFESSIONAL LAND SURVEYORS' ACT THIS 13th DAY OF Sept., 2004.

SIGNED Tom Hunter
TOM HUNTER R.C.E. 30515
PLUMAS COUNTY SURVEYOR
REG. EXP. 3/31/06

COUNTY RECORDER'S STATEMENT

FILED THIS 13th DAY OF Sept., 2004,
AT 12:07 P.M., IN BOOK 13 OF RECORD OF
SURVEYS AT PAGE(S) 66+67, AT THE REQUEST
OF THE PLUMAS COUNTY SURVEYOR.

PLUMAS COUNTY RECORDER
KATHLEEN WILLIAMS

BY Laura L. Davis
DEPUTY

FEE 10⁰⁰ DOC.#2004-0009641

RECORD OF SURVEY

FOR

W M BEATY
& ASSOCIATES

"WHEELLOCK"

IN SECTIONS 25 AND 36,
T 26 N, R 9 E, MDM,
IN THE UNINCORPORATED AREA OF
PLUMAS COUNTY,
STATE OF CALIFORNIA



SCALE: 1" = 500' DATE: JUNE, 2004
SHEET 1 OF 2

DETAIL
NOT TO SCALE

0 500 1000 2000 3000 4000

BASIS OF BEARINGS

CALIFORNIA ZONE 1, NAD 83 GRID BEARINGS
DERIVED FROM FAST STATIC G.P.S.
OBSERVATIONS.
EPOCH DATE: 2002.00
ADJUSTMENT DATE: JUNE, 2004
MAPPING ANGLES SHOWN AT CORNER NUMBERS
9 AND 3A.
ALL DISTANCES SHOWN AS MEASURED ARE GRID
DISTANCES. TO CONVERT TO GROUND, DIVIDE
DISTANCES SHOWN BY 0.99981.

LEGEND

- SET MONUMENT - SEE CORNER NOTES
- FOUND CORNER - SEE CORNER NOTES
- CALCULATED POINT
- ⊗ CORNER NUMBER
- LINES MARKED AND POSTED
- () 1 RECORD PER 7 RS 33
- () 2 RECORD PER 4 RS 61
- () 3 RECORD PER UNRECORDED SURVEY
BY CRANMER ENGINEERING FOR THE
CHY Co. DATED AUGUST, 2003
- () 4 RECORD PER 7 RS 97

DETAIL
NOT TO SCALE

TIED BOTH WITNESS
CORNERS SET BY
() 1 AND COMPASS
ADJUSTED TO
DETERMINE CORNER
POSITION

NW CORNER SEC. 36 SET BY LS 2322 (NOT
SEARCHED FOR THIS SURVEY) FROM EVIDENCE HE
ACCEPTED PER () 2 NOT ACCEPTED BY LS 5287
PER () 1. LS 5287 DESIGNATES CORNER AS LOST
AND RESETS BY DOUBLE PROPORTION, THEREBY
CHANGING THE POSITIONS OF CORNERS 4, 6, & 7.
SEE () 3.

5 R/S 118
10 PM 116
8 PM 60

R 8 E
R 9 ERECORD POSITION
PER () 2RECORD POSITION
PER () 1

(S 89°07'47" W)2
N 88°59'50" E
2609.30'
(2642.61')2

(S 89°07'47" W)2
N 88°59'50" E
2663.18'
(2665.55')2

W.M. BEATY
395 O.R. 404

(S 88°50'15" W, 2616.38')1

W.M. BEATY
216 O.R. 187

(S 88°43'26" E)3
S 89°10'19" E
1260.25'
(1264.15')3

FD. 3/4" I.P.
TAGGED LS 2322
PER () 2

FD. 1/2" CAPPED
REBAR RCE 13309
PER () 3

QUINCY CORS L1
PHASE CENTER
N 1875796.63
E 6857507.61