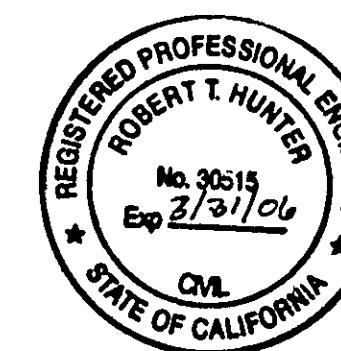


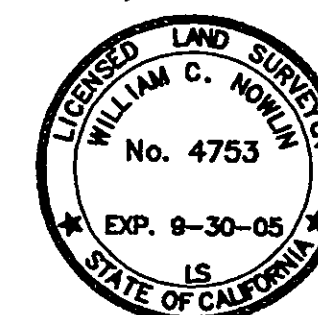
BASIS OF BEARINGS

CALIFORNIA ZONE 1, NAD 83 GRID BEARINGS
DERIVED FROM FAST STATIC G.P.S.
OBSERVATIONS.
EPOCH DATE: 2002.00
ADJUSTMENT DATE: APRIL, 2004
MAPPING ANGLES SHOWN AT CORNER NUMBERS
6, 8, 21 & 22.
ALL DISTANCES SHOWN AS MEASURED ARE GRID
DISTANCES. TO CONVERT TO GROUND, DIVIDE
DISTANCES SHOWN BY 0.999750 (SEC. 27)
AND BY 0.999718 (SEC 34).



SURVEYOR'S STATEMENT

THIS MAP CORRECTLY REPRESENTS A SURVEY MADE
BY ME OR UNDER MY DIRECTION IN CONFORMANCE
WITH THE REQUIREMENTS OF THE PROFESSIONAL
LAND SURVEYORS' ACT AT THE REQUEST OF
ROSEBURG RESOURCES, INC. IN APRIL, 2004.



SIGNED William C. Nowlin
WILLIAM C. NOWLIN L.S. 4753

COUNTY SURVEYOR'S STATEMENT

THIS MAP HAS BEEN EXAMINED IN
ACCORDANCE WITH SECTION 8766 OF THE
PROFESSIONAL LAND SURVEYORS' ACT
THIS 13 DAY OF Sept., 2004.

SIGNED Tom Hunter
TOM HUNTER R.C.E. 30515
PLUMAS COUNTY SURVEYOR
REG. EXP. 3/31/06

COUNTY RECORDER'S STATEMENT

FILED THIS 13th DAY OF Sept., 2004,
AT 12:07 P.M., IN BOOK 13 OF RECORD OF
SURVEYS AT PAGE(S) 63, 64 & 65, AT THE REQUEST
OF THE PLUMAS COUNTY SURVEYOR.

PLUMAS COUNTY RECORDER
KATHLEEN WILLIAMS

BY Laura L. Davis
DEPUTY

FEE 12.00 DOC.# 2004-0009640

RECORD OF SURVEY

FOR

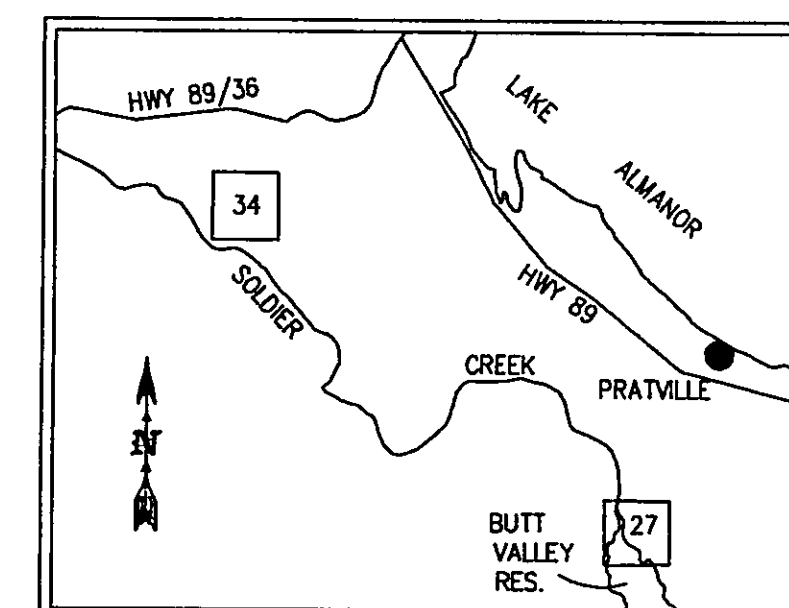
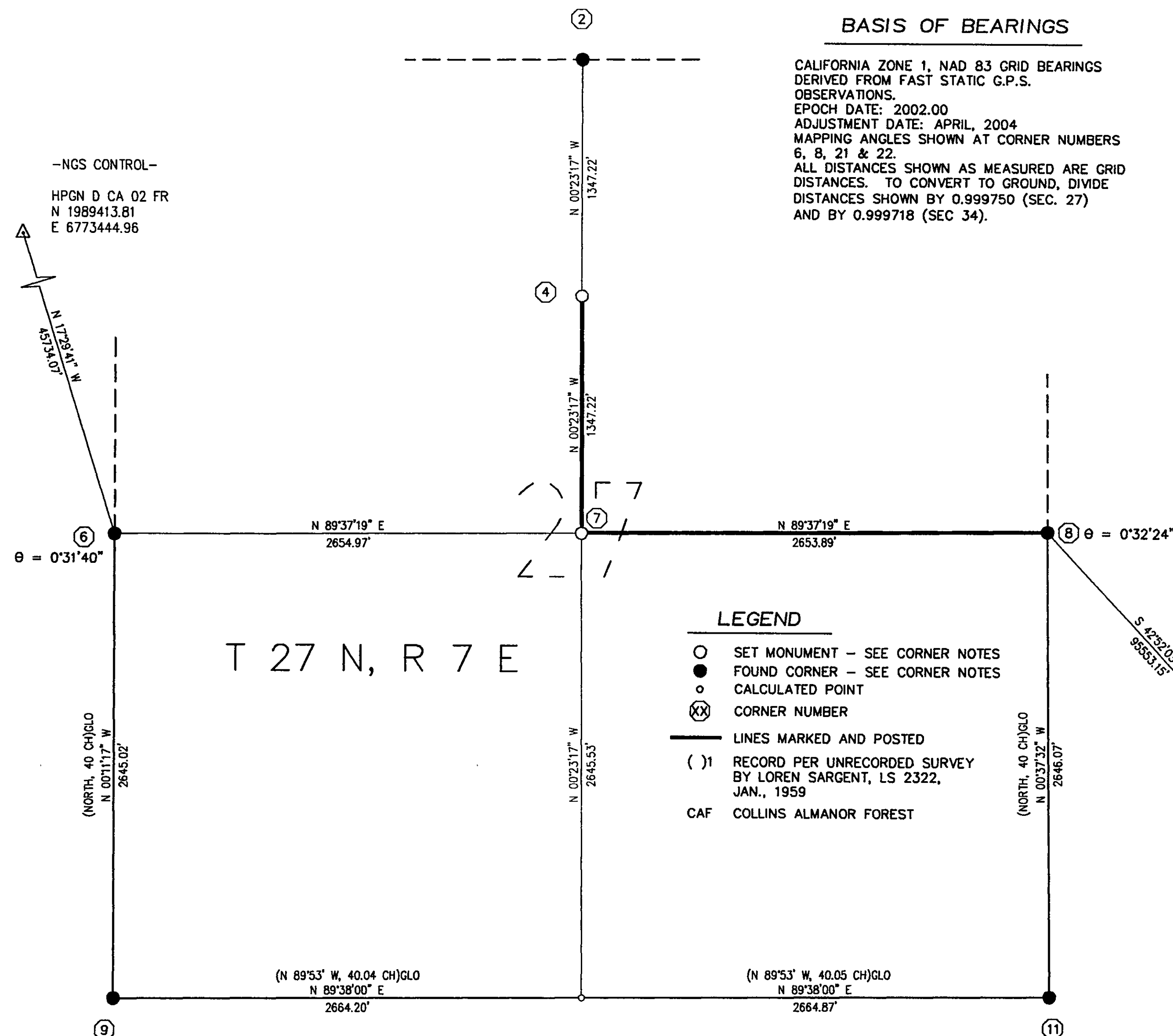
ROSEBURG RESOURCES, INC.

"ALMANOR"

IN SECTION 34, T 28 N, R 6 E,
AND IN SECTION 27, T 27 N, R 7 E,
MDM,
IN THE UNINCORPORATED AREA OF
PLUMAS COUNTY,
STATE OF CALIFORNIA



SCALE: 1" = 500' DATE: JUNE, 2004
SHEET 1 OF 3

VICINITY MAP
NO SCALE