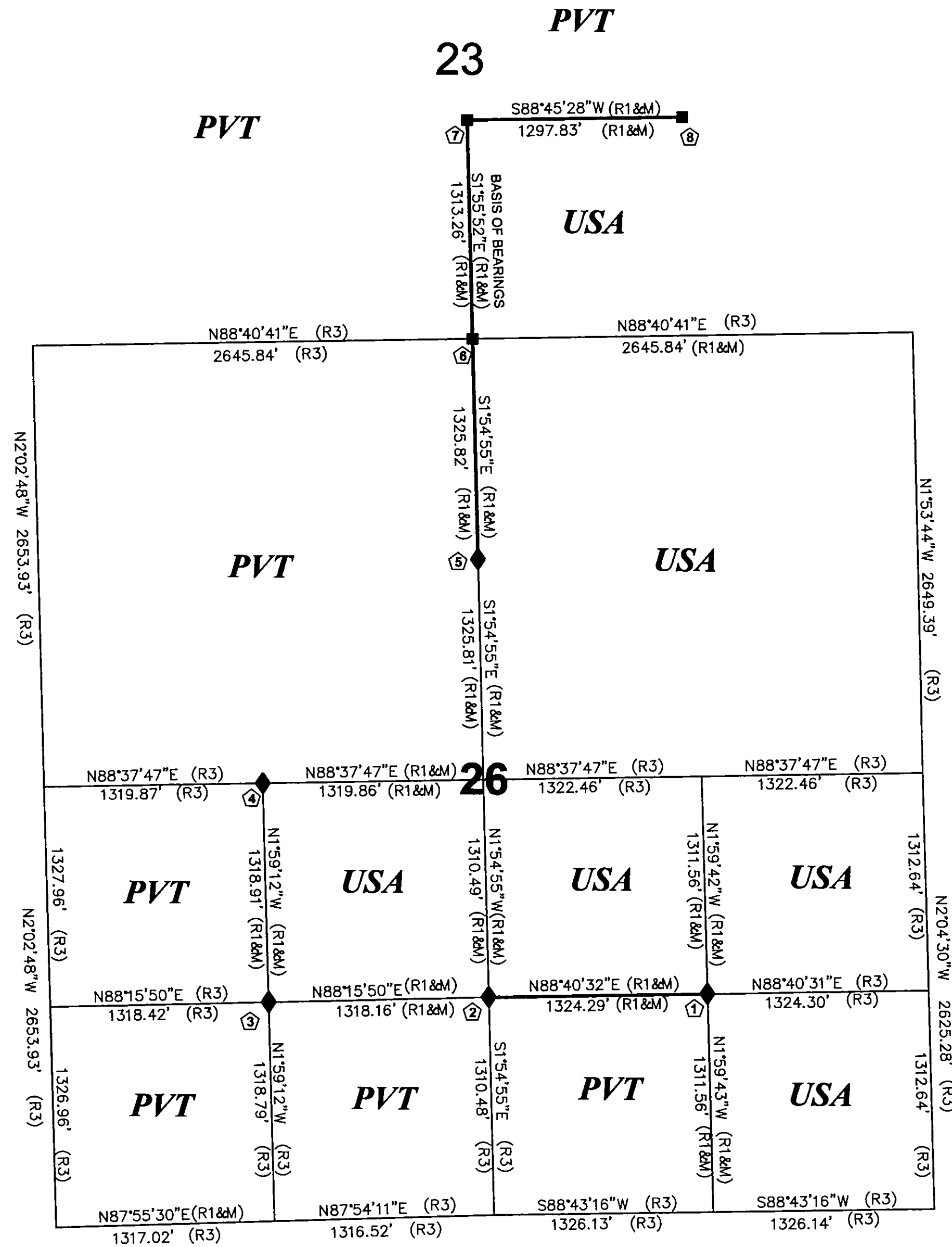
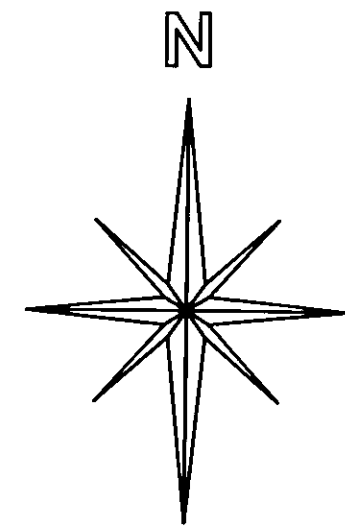
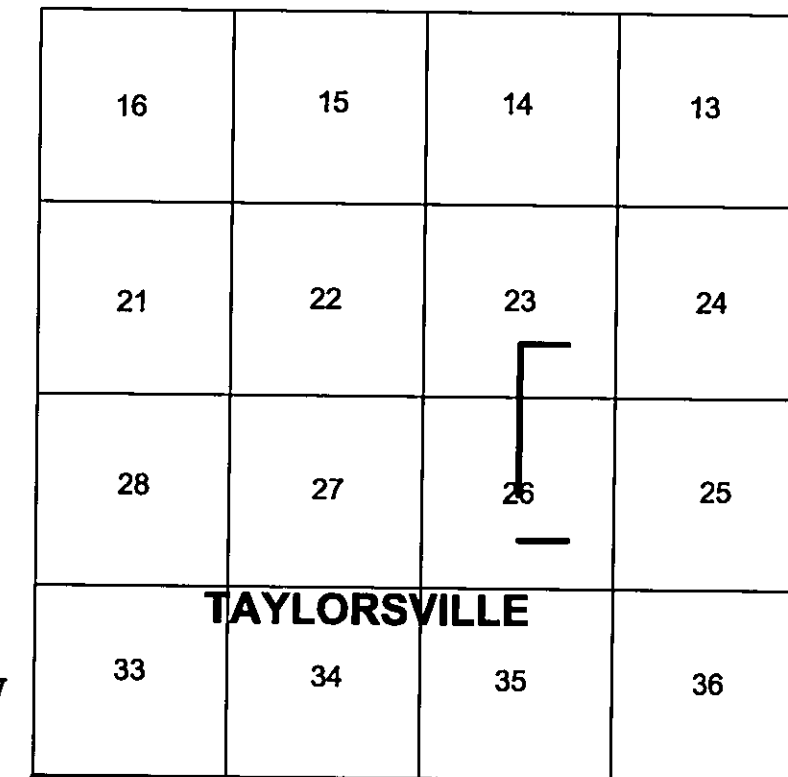


- ① SET STD USFS DRIVE-IN MONUMENT IN A MOUND OF STONE (SE 1/16 S26)  
FWBS:  
FD 1/2" REBAR LS2702, N88°27'46"W, 6.35'  
FD 12" BLACK OAK (CLOSED FACE)  
N81°18'W, 40.6'  
FD 9" BLACK OAK (CLOSED FACE)  
N06°19'W, 18.5'
- ② SET STD USFS DRIVE-IN MONUMENT IN A MOUND OF STONE (CS 1/16 S26)  
FWBS:  
FD 1 1/4" IP RCE 13528, N89°29'W, 12.6'  
SET BY JIM BROCK USING (R2)  
MKD 9" PINE, N74°14'W, 239.7'  
FD 8" BLACK OAK (CLOSED FACE)  
N89°09'E, 166.2'
- ③ SET STD USFS DRIVE-IN MONUMENT IN A MOUND OF STONE (SW 1/16 S26)  
FWBS:  
MKD 19" PINE, N15°53'W, 6.7'  
MKD 19" PINE, S19°03'W, 11.3'
- ④ SET STD USFS DRIVE-IN MONUMENT IN A MOUND OF STONE (CW 1/16 S26)  
FWBS:  
MKD 13" PINE, N1°04'E, 10.7'  
MKD 11" PINE, S59°05'W, 21.0'
- ⑤ SET STD USFS DRIVE-IN MONUMENT IN A MOUND OF STONE (CN 1/16 S26)  
FWBS:  
MKD 28" PINE, N06°08'E, 89.6'  
MKD 6" PINE, N06°49'W, 81.5'
- ⑥ FD 2" OD IP RCE 18584  
MOUND OF STONE (1/4 CORNER S26/S23)  
FWBS:  
MKD 7" PINE, N11°16'E, 5.6'  
MKD 6" PINE, N66°57'E, 8.5'
- ⑦ FD 2" OD IP RCE 18584  
MOUND OF STONE (CS 1/16 S23)  
FWBS:  
MKD 6" PINE, N40°36'E, 14.9'  
MKD 6" PINE "X"BT, S20°17'E, 28.4'
- ⑧ FD 2" OD IP RCE 18584  
MOUND OF STONE (SE 1/16 S23)  
FWBS:  
MKD 8" PINE, N32°05'E, 25.9'  
MKD 8" PINE, S87°56'W, 33.6'



VICINITY MAP  
NO SCALE



SCALE

1" = 600 FEET



**BASIS OF BEARING**

MEASURED BEARINGS ARE BASED ON A RECORD OF SURVEY BY WILLIAM JOHNSON (RCE18584) RECORDED AT BOOK 6, PAGE 39.

**GENERAL NOTES**

A STANDARD UNITED STATES FOREST SERVICE (USFS) DRIVE-IN MONUMENT IS A 5/8" DIAMETER ALUMINUM ROD WITH A 3-1/4" ALUMINUM CAP EDGE-MARKED WITH THE USFS LOGO.

**NOTE**

CORNERS NUMBER ① AND ② WHERE RE-ESTABLISHED BASED ON THE (R1) SURVEY. THE REASON FOR THE DIFFERENCE IN CORNER LOCATIONS IS DUE TO THE DISAGREEMENT AS TO THE RESOLUTION OF THE NORTH 1/4 CORNER SECTION 26. I REJECTED LS2702 N1/4 CORNER POSTION.(R2) I ACCEPTED RCE18584 N1/4 CORNER POSTION(R1) BECAUSE I BELIEVE WILLIAM JOHNSON'S CORNER HAS THE BEST SUPPORTING CORNER EVIDENCE.

**SURVEY HISTORY**

R1	6RS39	1981	RCE 18584
R2	3RS76	1966	RLS 2702
R3	CALC.FROM 6RS39	2002	RLS 5623

**LEGEND**

- FOUND CORNER AS NOTED
- ◆ SET STANDARD U.S. FOREST SERVICE DRIVE-IN MONUMENT (BEARING TREES AS NOTED)
- PROPERTY BOUNDARY MARKED AND POSTED
- ① CORNER NOTE



**RECORD OF SURVEY**  
SECTIONS 23 & 26 T26N R10E, MDM  
PLUMAS COUNTY, CALIFORNIA  
FOR  
U.S.D.A. FOREST SERVICE  
P.O. BOX 11500, QUINCY, CA.

CREW: 2002  
BILL SNOW  
TERRI MASHEK

DRAWN BY: BILL SNOW

SHEET 2 OF 3