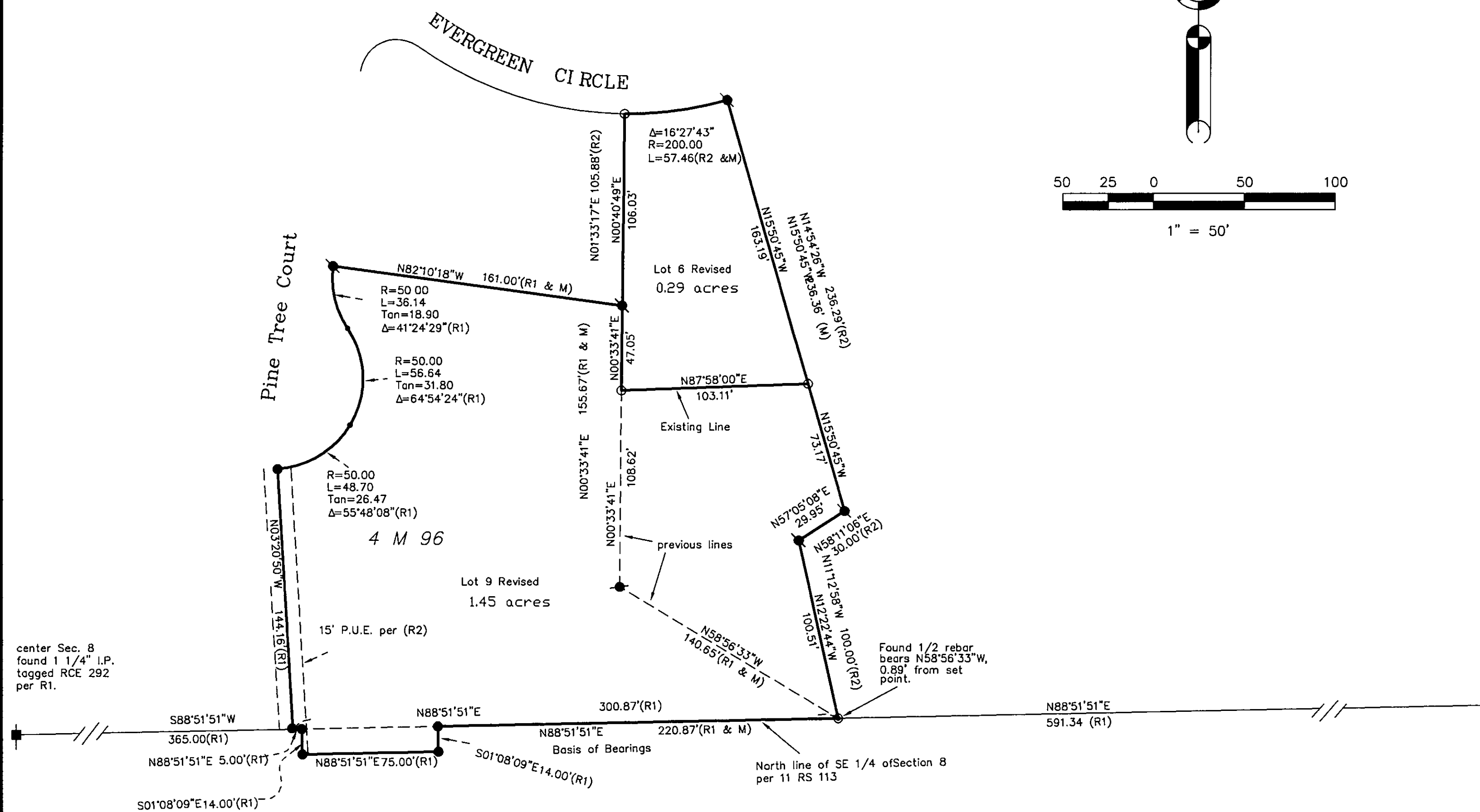


## NOTES

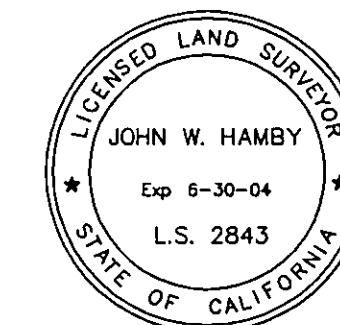
The Basis of Bearings for this map is the North line of the Southeast 1/4 of Section 8, shown as N88°51'51"W on the Record of Survey for Emery and Joan McRoberts, filed in the office of the Recorder of Plumas County in Book 11 Record of Surveys at page 113.

This Record of Survey was prepared to reflect a Lot Line Adjustment for which a resolution is Recorded as Document ~~2004-0003256~~, Plumas County Records.



## SURVEYOR'S STATEMENT

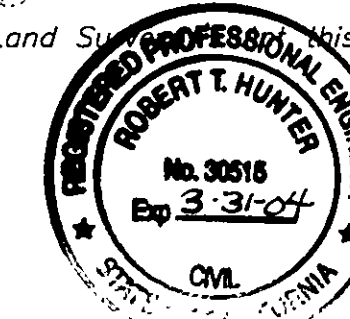
This map correctly represents a survey made by me or under my direction in conformance with the requirements of the Professional Land Surveyor's Act at the request of Don Turke in October, 2003.



*John W. Hamby*  
John W. Hamby LS 2843

## COUNTY SURVEYOR'S STATEMENT

This map has been examined in accordance with Section 8766 of the Professional Land Surveyor's Act this 6<sup>th</sup> day of January, 2004



*R. Tom Hunter*  
R. Tom Hunter RCE 30518  
PLUMAS COUNTY SURVEYOR  
License Expiration Date 3/31/04

## RECORDER'S STATEMENT

Filed this 7<sup>th</sup> day of April, 2004 at 2:21 p.m. in Book 13 of Record of Surveys, at page 30, at the request of the County Surveyor.

Fee \$ 8.00  
File No. 2004-03254

Kathleen Williams  
County Recorder  
by *Kathleen Williams*  
Deputy

## RECORD OF SURVEY

for  
Don Turke

Lots 6, 8 & 9, 4 M 96  
Plumas-Eureka Estates Unit No. 2  
and

a portion of Section 8, T. 22 N., R. 12 E., M.D.M.  
Plumas County ~ California  
1" = 50' October, 2003

Hamby Surveying Inc.  
P.O. Box 1209  
Portola, CA 96122  
(530) 832-5571

Sheet 1 of 1