

Basis of Bearings

The Basis of Bearings of this map is the North line of the NE 1/4 of Section 11 shown as S88°57'54"E in Book 10 of Parcel Maps at page 96 Plumas County records.

Bearing Trees with Bearing Tree Tags
11" Cedar S56°32'18"E, 9.30'
18" Pine N20°06'58"E, 25.46'

North 1/4 Corner Section 11 found 5/8" rebar with Aluminum Cap stamped LS 2843 per (R1)

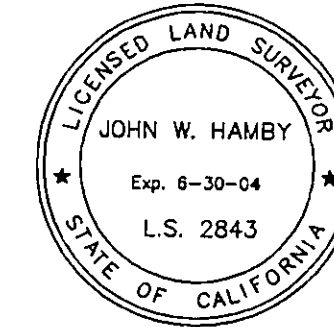
Bearing Trees with Bearing Tree Tags
12" Blazed Cedar S52°E, 7 lks.
13" Blazed & Scribed Pine S49°E, 21 lks.
14" Blazed Pine N61°30'E, 20 lks.
22" Pine N31°E, 47.5 lks
15" Blazed & Scribed Pine N45°W, 65 lks.
15" Blazed Cedar S25°30'W, 57 lks

Bearing Tree
36" Dead Fir with Bearing Tree Tag S1/2°W, 40 lks.

North 1/4 corner Section 12 found BLM Brass Cap stamped as shown
T23N R11E S1 S12 1/4 S12 1978

SURVEYOR'S STATEMENT

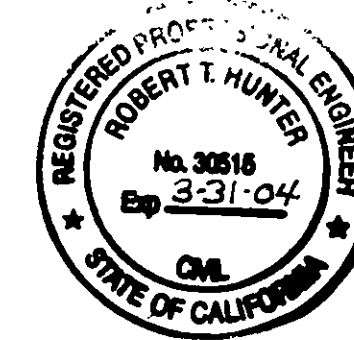
This map correctly represents a survey made by me or under my direction in conformance with the requirements of the Professional Land Surveyor's Act at the request of Jack Hull in August, 2003.



John W. Hamby LS 2843

COUNTY SURVEYOR'S STATEMENT

This map has been examined in accordance with Section 8766 of the Professional Land Surveyor's Act this 19th day of March, 2004.



R. Tom Hunter RCE 30515 PLUMAS COUNTY SURVEYOR License Expiration Date 3/31/04

RECORDER'S STATEMENT

Filed this 24th day of March, 2004 at 2:29 p.m. in Book 13 of Record of Surveys, at page 29, at the request of the County Surveyor.

Fee \$800 File No. 2004-2758

Kathleen Williams County Recorder by Patty Gruel Deputy

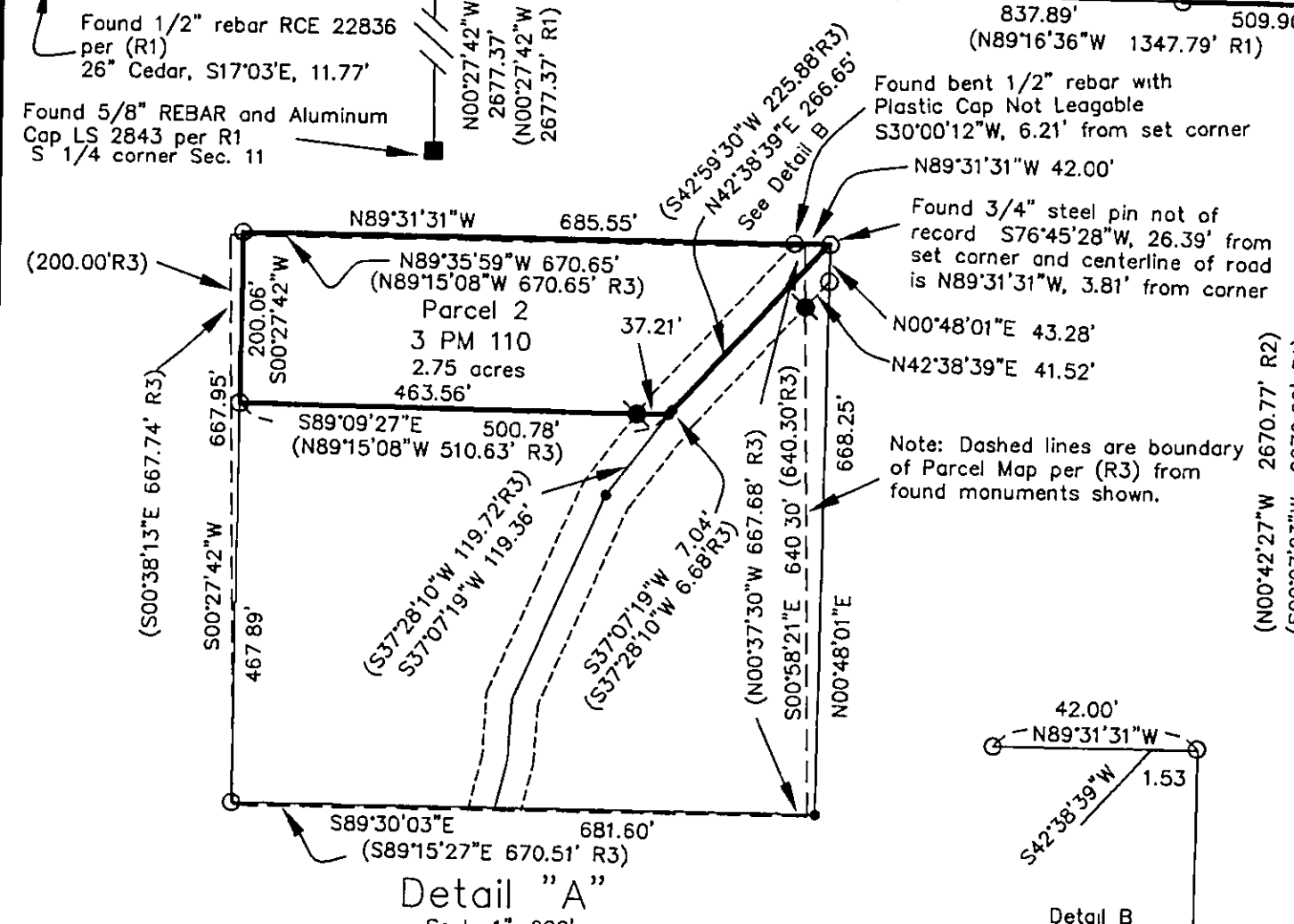
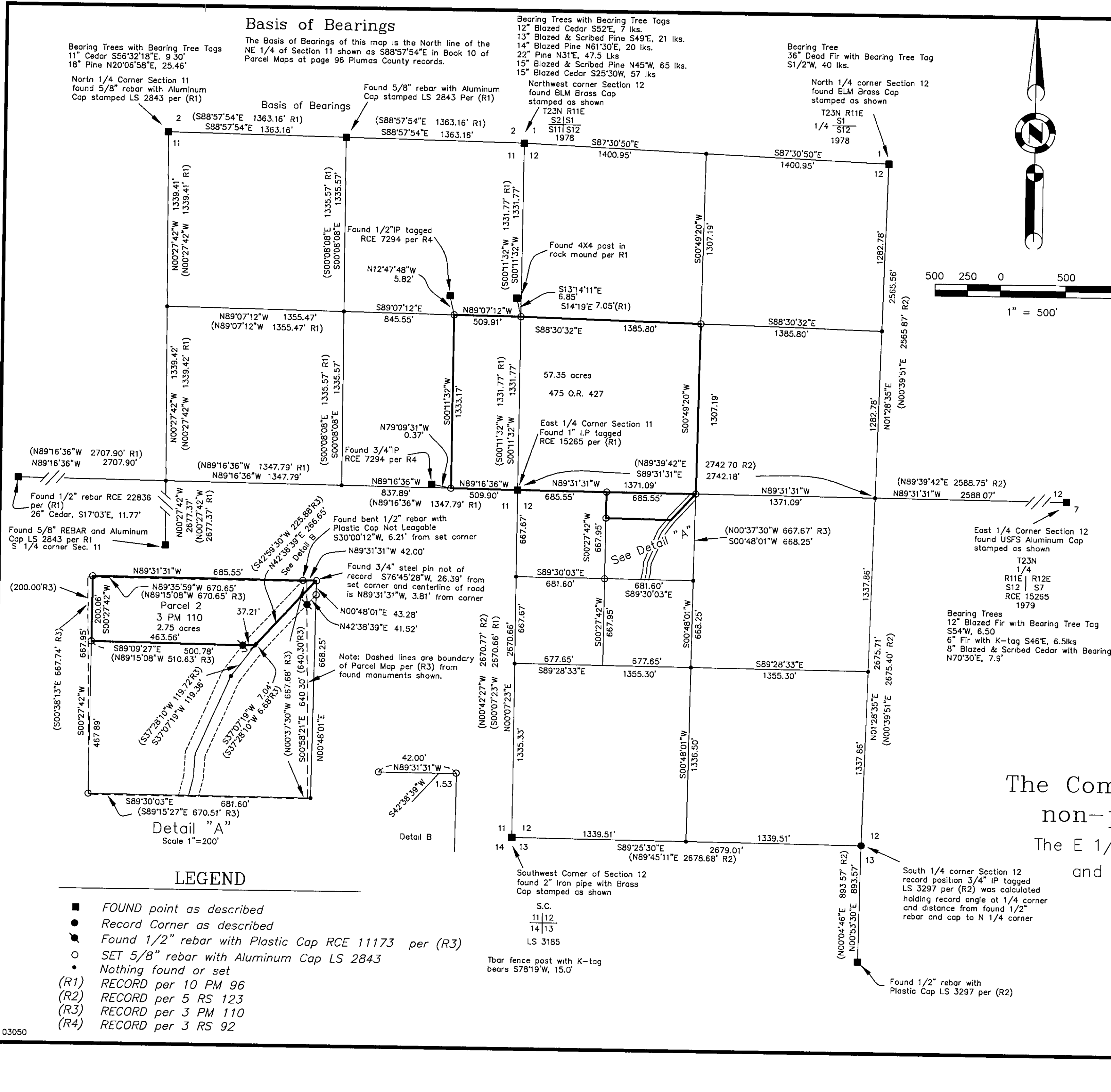
RECORD OF SURVEY

for The Community of Christ, a Missouri non-profit corporation ("Church")

The E 1/2 of the SE 1/4 of the NE 1/4 of Section 11 and the SW 1/4 of the NW 1/4 of Section 12 T. 23 N., R. 11 E., M.D.M.

Plumas County ~ California Scale 1" = 500' August, 2003

Hamby Surveying Inc. P.O. Box 1209 Portola, CA 96122 (530) 832-5571



LEGEND

- FOUND point as described
Record Corner as described
Found 1/2" rebar with Plastic Cap RCE 11173 per (R3)
SET 5/8" rebar with Aluminum Cap LS 2843
Nothing found or set
(R1) RECORD per 10 PM 96
(R2) RECORD per 5 RS 123
(R3) RECORD per 3 PM 110
(R4) RECORD per 3 RS 92

Tbar fence post with K-tag bears S78°19'W, 15.0'

S.C. 11/12 14/13 LS 3185