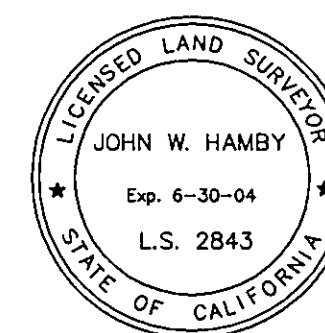


BASIS OF BEARINGS

The Basis of Bearings for this map is the Easterly line of Grizzly Road (Walker Mine Road) shown as N31°19'20"W on the map of Crocker Mountain Estates, filed in the office of the Recorder of Plumas County in Book 3 Maps page 44.

SURVEYOR'S STATEMENT

This map correctly represents a survey made by me or under my direction in conformance with the requirements of the Professional Land Surveyors' Act at the request of Grizzly Lake Resort Imp. Dist. in September 2003.



John W. Hamby
John W. Hamby LS 2843
License Exp. 6-30-04

COUNTY SURVEYOR'S STATEMENT

This map has been examined in accordance with Section 8766 of the Professional Land Surveyors' Act this 17th day of March, 2004.



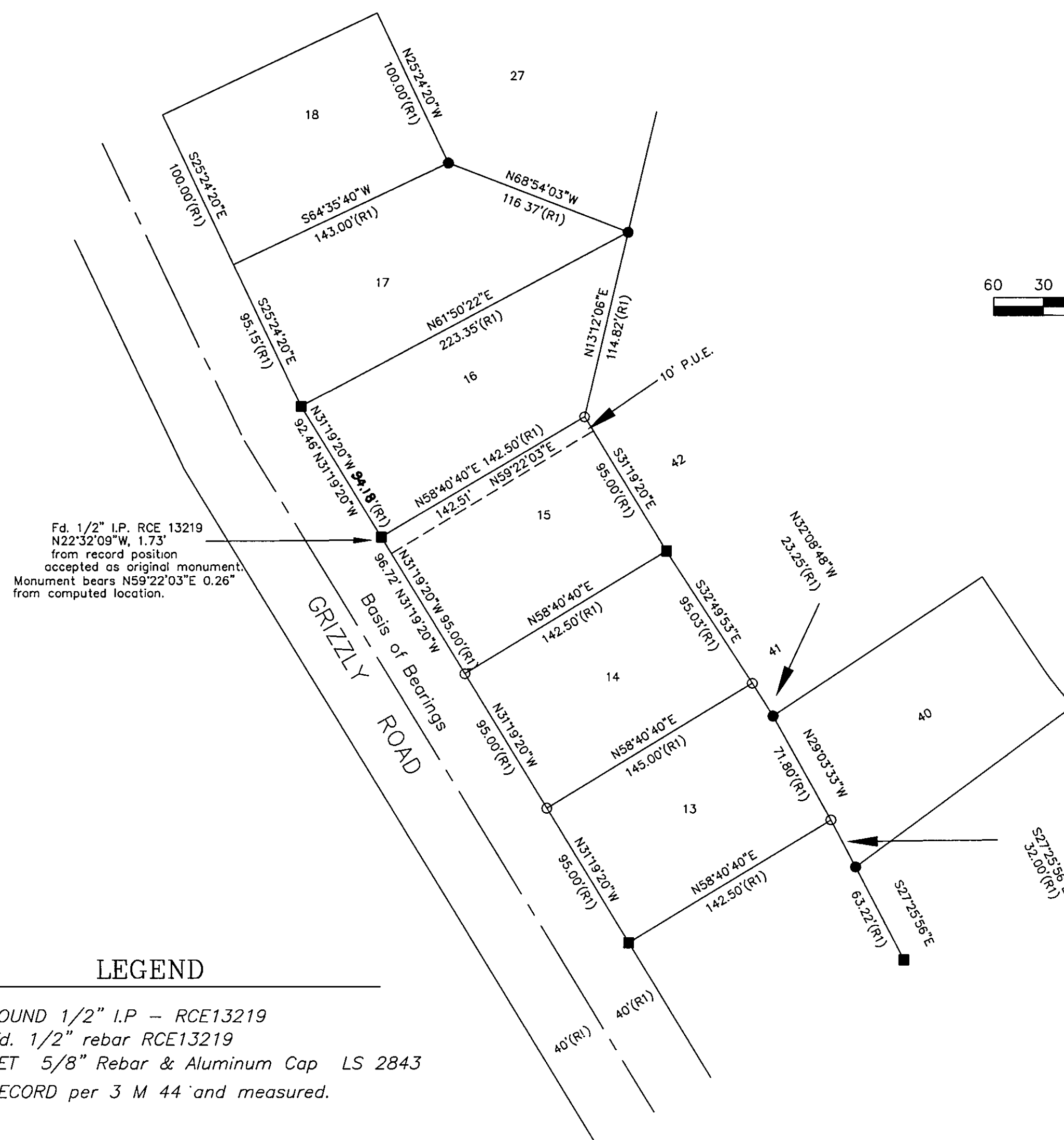
R. Tom Hunter
R. Tom Hunter RCE 30515
PLUMAS COUNTY SURVEYOR
License Expiration Date 3/31/04

RECORDER'S STATEMENT

Filed this 17th day of March, 2004 at 3:45pm. in Book 13 of Record of Surveys, at page 28, at the request of the County Surveyor.

Fee: \$8.00
Document No. 2004-2546

Kathleen Williams
County Recorder
By: *Kathleen Williams*
Deputy



RECORD OF SURVEY
for
GRIZZLY LAKE RESORT IMPROVEMENT DIST.
CROCKER MOUNTAIN ESTATES - 3 M 44

A portion of Section 6
T. 23 N., R. 14E., M.D.M.

Plumas County ~ California
Scale 1" = 60' January, 2004

Hamby Surveying Inc.
P.O. Box 1209
Portola, CA 96122
(530) 832-5571