

BASIS OF BEARING

MEASURED BEARINGS AND DISTANCES ARE GRID AND THEY ARE BASED ON THE CALIFORNIA COORDINATE SYSTEM OF NAD83 (CCS83), ZONE 1.

NEAR THE S 1/4 CORNER OF SECTION 23 IS 0° 50' 26" MULTIPLY GRID DISTANCES BY 1.000351019 TO GET GROUND DISTANCES.

CONTROL WAS DONE WITH GPS, TRIMBLE NAVIGATION, 4000 ST, SINGLE FREQUENCY RECEIVERS. CONTROL WAS BROUGHT IN USING THE FOLLOWING STATIONS:

"NASA 7221" 1982

LATITUDE: 39° 58' 28.37466" N 1875796.2236 N
LONGITUDE: 120° 56' 39.88053" W 6857508.1263 E

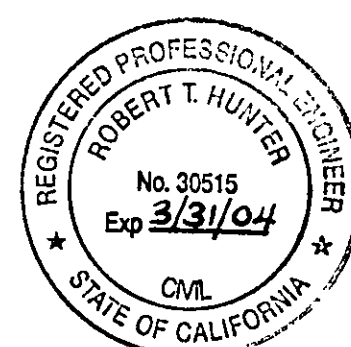
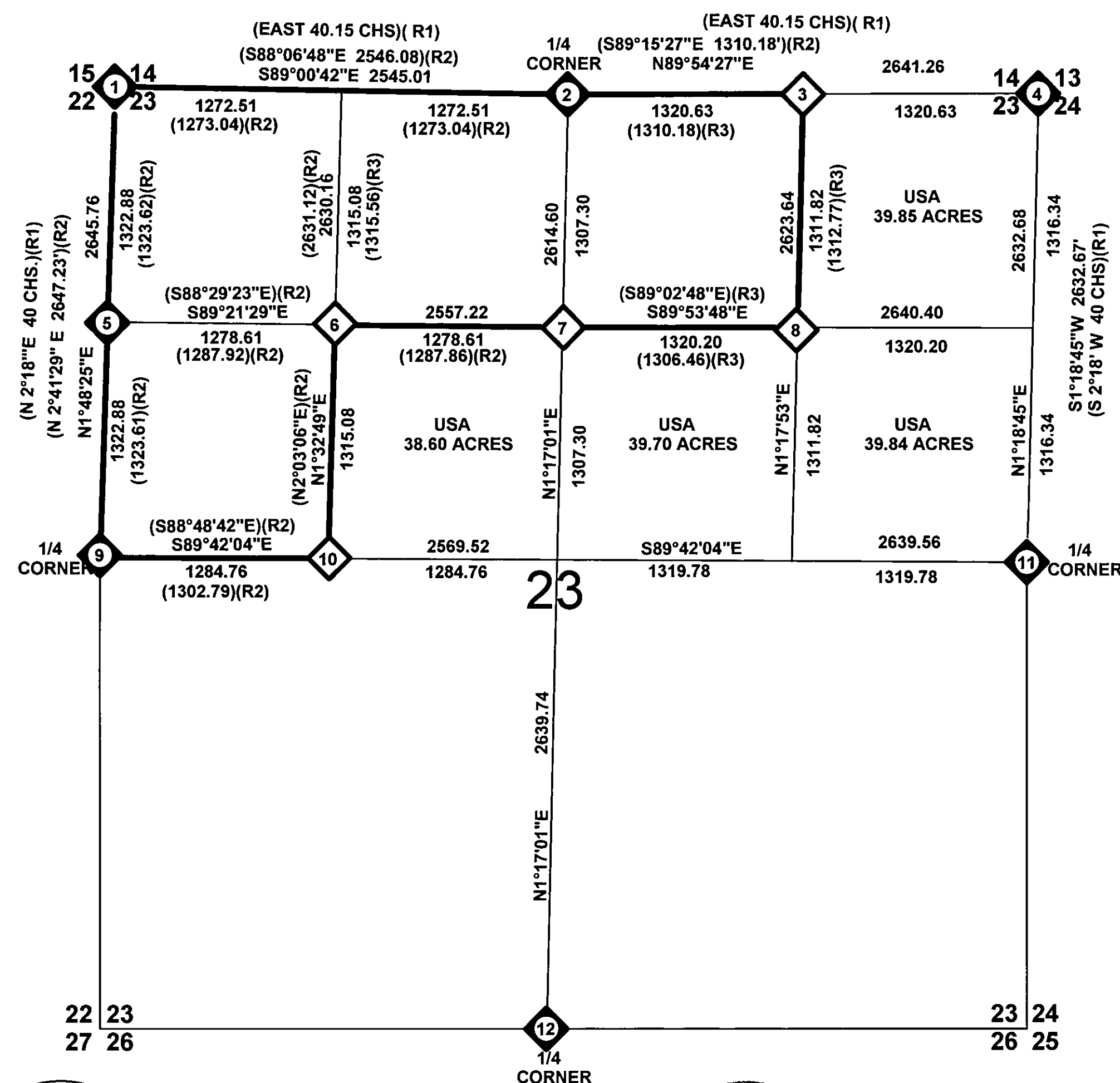
"QUINCY" 1949"

LATITUDE: 39° 56' 32.58580" N 1864049.9777 N
LONGITUDE: 120° 57' 12.32372" W 6855122.4680 E

LATITUDES AND LONGITUDES USED ARE PUBLISHED BY NATIONAL GEODETIC SURVEYS (NGS) IN FEBRUARY 1987.

LEGEND

- FOUND CORNER AS NOTED
- SET CORNER
- PROPERTY BOUNDARY MARKED AND POSTED



SURVEYOR'S STATEMENT

This map correctly represents a survey made by me or under my direction in conformance with the requirements of the Land Surveyors' Act at the request of Plumas National Forest in JANUARY 13, 2004.

William G. Snow
William Glenn Snow L.S. 5623
License Exp. Date 12/31/06

COUNTY SURVEYOR'S STATEMENT

This map has been examined in accordance with Section 8766 of the Land Surveyors' Act this 20th day of January, 2004.

R. Tom Hunter
R. Tom Hunter R.C.E. 30515
Plumas County Surveyor
License Exp. Date 03/31/04

RECORDER'S STATEMENT

Filed this 23rd day of January, 2004 at 2:06 P.M. in Book 13 of Records of Surveys, at page 20-21, at the request of the County Surveyor.

Fee: \$ 10.00
File No: 2004-677

Kathleen Williams
County Recorder
By: *Kathleen Williams*
Deputy

RECORD OF SURVEY

SECTION 23 T27N R11E MDM
PLUMAS COUNTY, CALIFORNIA
FOR
PLUMAS NATIONAL FOREST
PO BOX 11500 QUINCY, CALIFORNIA 95971

SHEET 1 OF 2