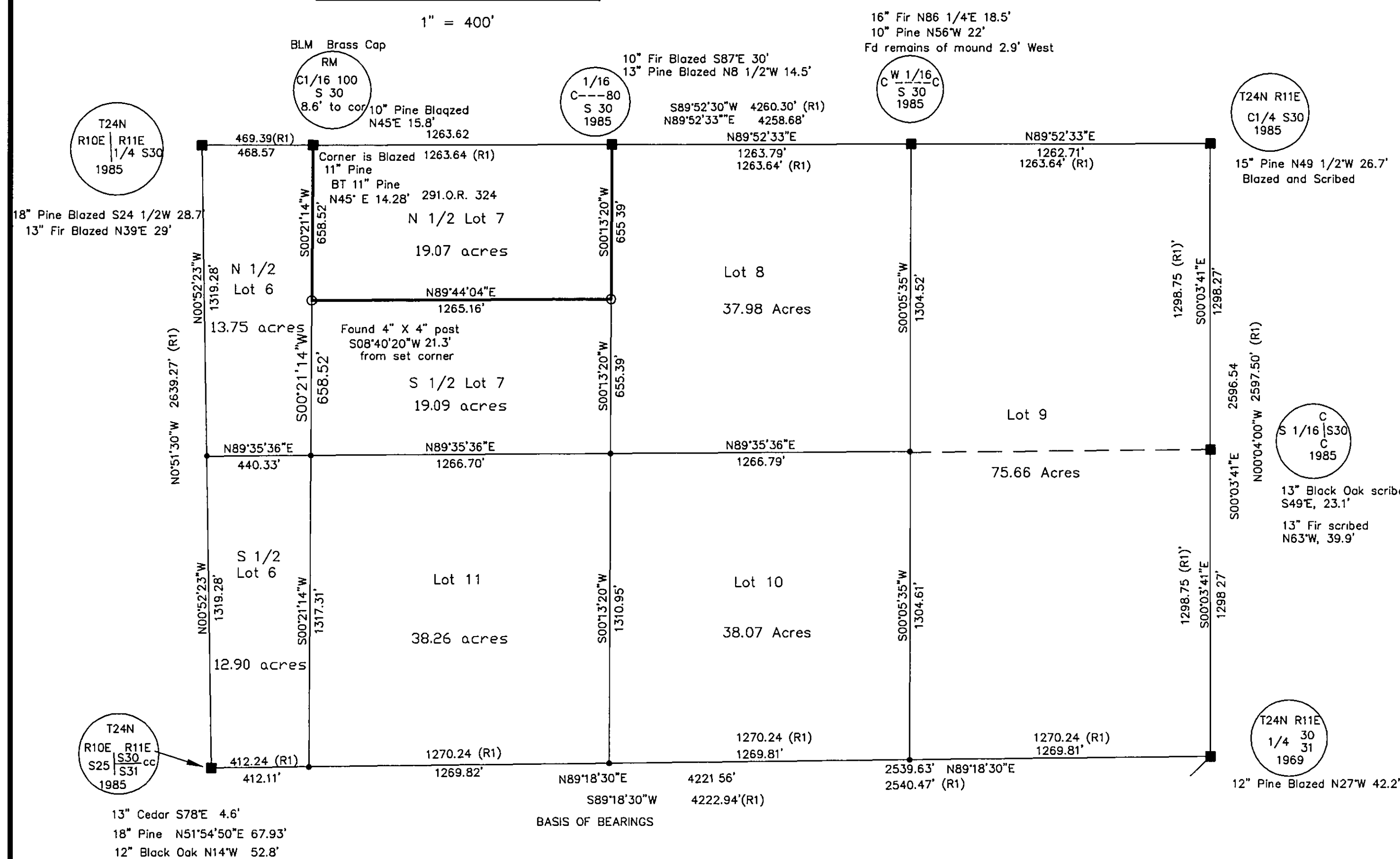
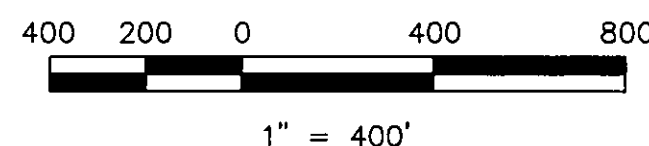


## BASIS OF BEARINGS

The Basis of Bearings for this map is the South line of the SW 1/4 of Section 30, shown as S89°18'30"W on the BLM plat of "DEPENDENT RESURVEY AND SUBDIVISION" T.24N.R.11E. M.D.M. FILE No. 41 1777-C, 1777D Approved May 28, 1987.

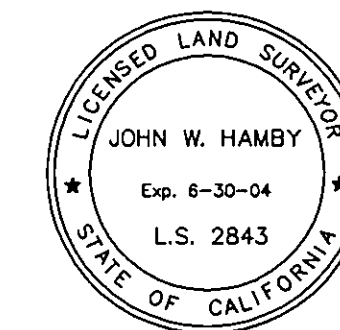


## LEGEND

- FOUND BLM Brass Cap Monument Stamped as shown.
  - Found point as described
  - Set Rebar with Aluminum Cap LS 2843
  - Nothing found or set
- (R1) RECORD per BLM Plat No. 41 1777 C,D

## SURVEYOR'S STATEMENT

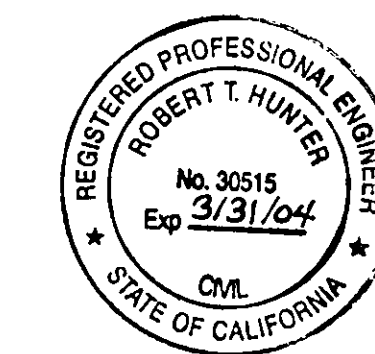
This map correctly represents a survey made by me or under my direction in conformance with the requirements of the Professional Land Surveyor's Act at the request of Doug Pretzel in June, 2003.



*John W. Hamby*  
John W. Hamby LS 2843

## COUNTY SURVEYOR'S STATEMENT

This map has been examined in accordance with Section 8766 of the Professional Land Surveyor's Act this 6<sup>th</sup> day of January, 2004



*R. Tom Hunter*  
R. Tom Hunter RCE 30515  
PLUMAS COUNTY SURVEYOR  
License Expiration Date 3/31/04

## RECORDER'S STATEMENT

Filed this 12<sup>th</sup> day of January, 2004 at 3:44pm in Book 13 of Record of Surveys, at page 15, at the request of the County Surveyor.

Fee \$8.00  
File No. 2004-00285

Kathleen Williams  
County Recorder  
by *J. Williams*  
Deputy

# RECORD OF SURVEY for SIERRA PACIFIC INDUSTRIES

A portion of the SW 1/4 of Section 30  
T. 24 N., R. 11 E., M.D.M.

Plumas County ~ California  
Scale 1" = 400' October, 2003

Hamby Surveying Inc.  
P.O. Box 1209  
Portola, CA 96122  
(530) 832-5571