

## LEGEND

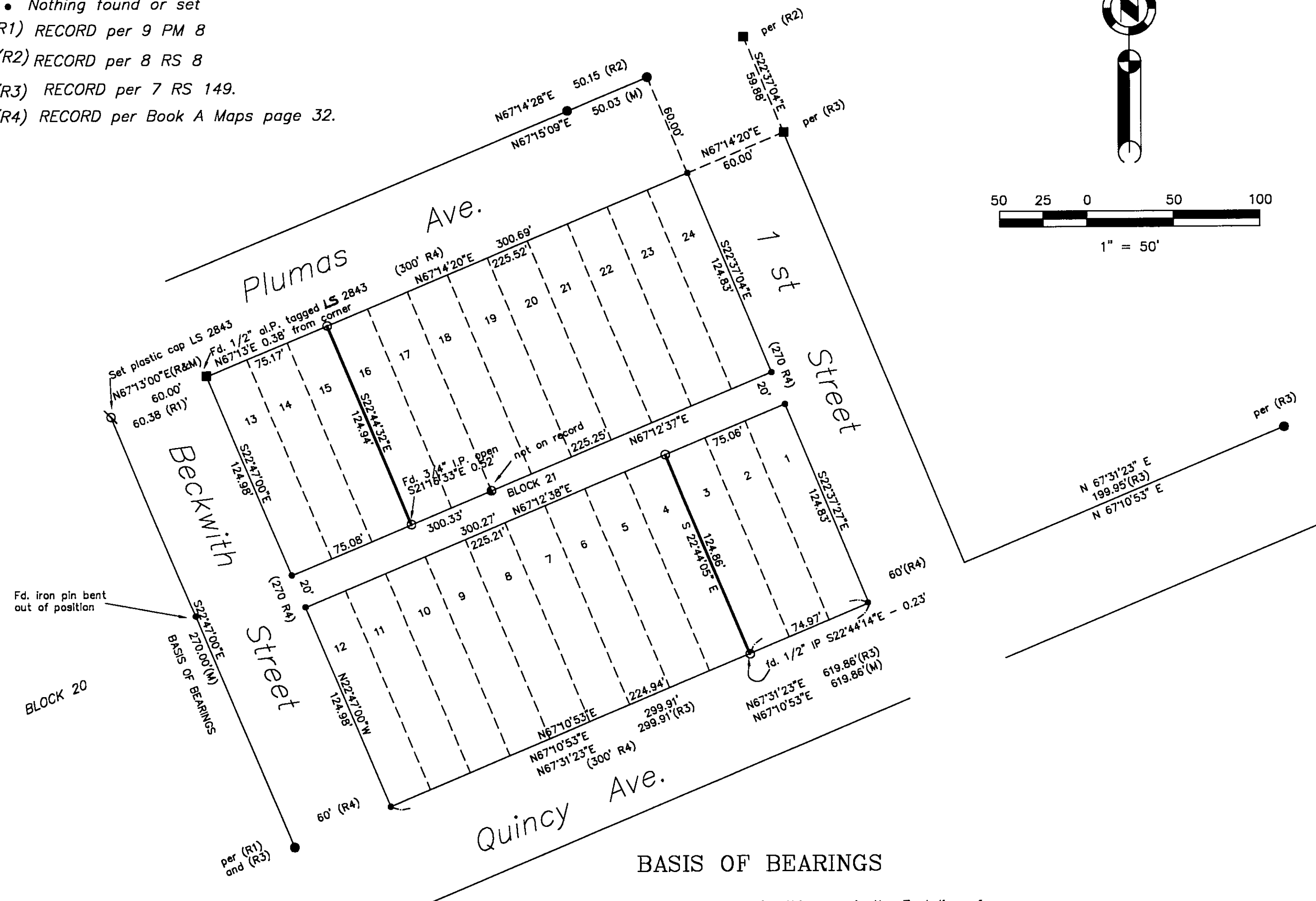
- FOUND Rebar with Aluminum Cap LS 2843
- FOUND 3/4" I.P. open, set tag LS 2843.
- ⊗ FOUND 1/2" rebar with plastic cap, not readable
- SET 5/8" Rebar & Aluminum Cap LS 2843
- Found 5/8" Rebar & Plastic Cap LS 2843
- Nothing found or set

(R1) RECORD per 9 PM 8

(R2) RECORD per 8 RS 8

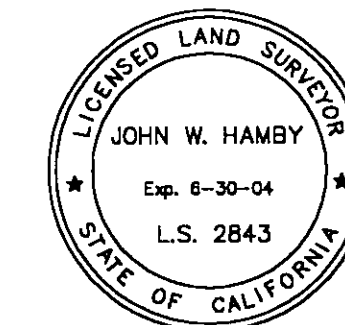
(R3) RECORD per 7 RS 149.

(R4) RECORD per Book A Maps page 32.



## SURVEYOR'S STATEMENT

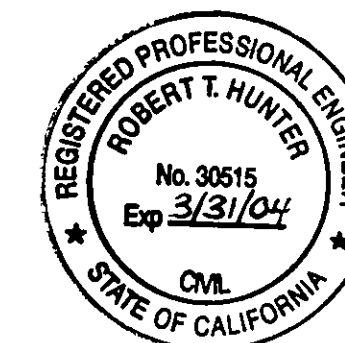
This map correctly represents a survey made by me or under my direction in conformance with the requirements of the Professional Land Surveyor's Act at the request of Justin Williams in August, 2003.



*John W. Hamby*  
John W. Hamby LS 2843

## COUNTY SURVEYOR'S STATEMENT

This map has been examined in accordance with Section 8766 of the Professional Land Surveyor's Act this 3rd day of October, 2003.



*R. Tom Hunter*  
R. Tom Hunter RCE 30515  
PLUMAS COUNTY SURVEYOR  
License Expiration Date 3/31/04

## RECORDER'S STATEMENT

Filed this 6th day of October, 2003 at 8:45 a.m. in Book 13 of Record of Surveys, at page 5, at the request of the County Surveyor.

Fee \$8.00  
File No. 2003-12022

Kathleen Williams  
County Recorder  
by *Spencer Hancock*  
Deputy

# RECORD OF SURVEY for Justin Williams

A portion of Block 21, Northern Addition to Portola  
Section 36

T. 23 N., R. 13 E., M.D.M.

Plumas County ~ California  
Scale 1" = 50' August, 2003

Hamby Surveying Inc.  
P.O. Box 1209  
Portola, CA 96122  
(530) 832-5571

SHEET 1 OF 1