

NEW BEARING TREE:

* 20" W. FIR, SCRIBED "1/4S35BT"; S64°31'E, 77.9' (NEW)

EXISTING BEARING TREES:

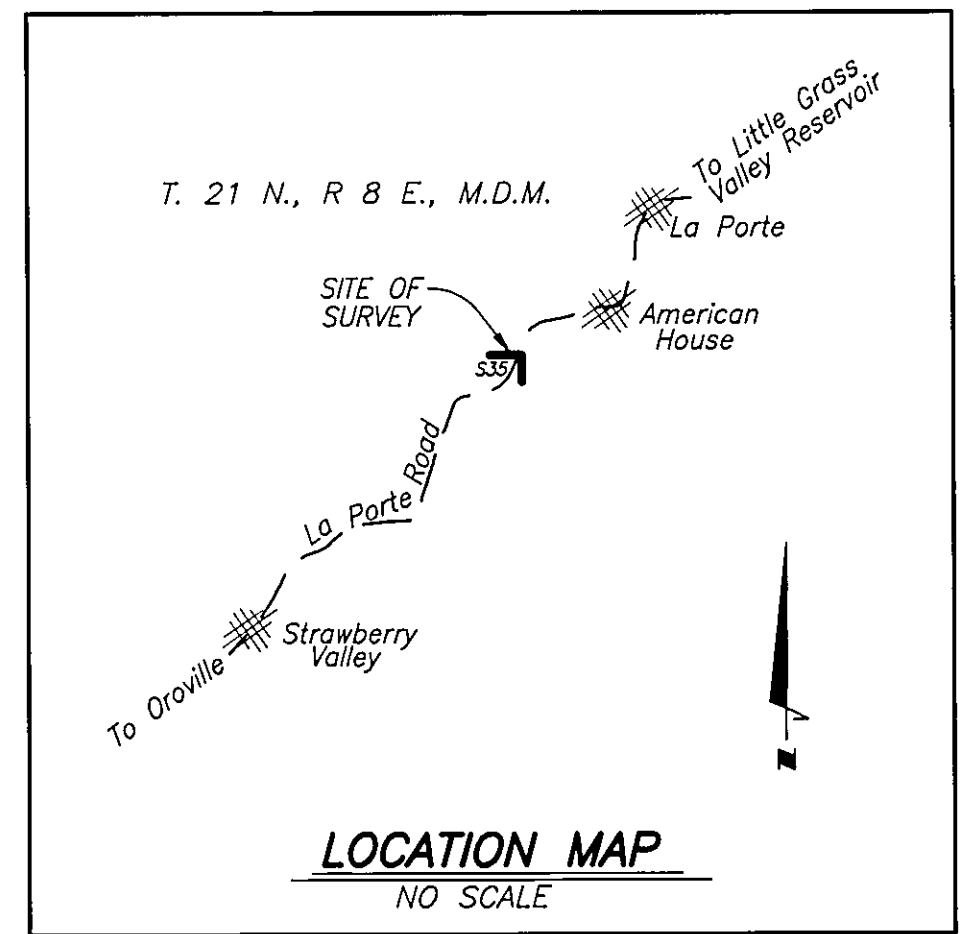
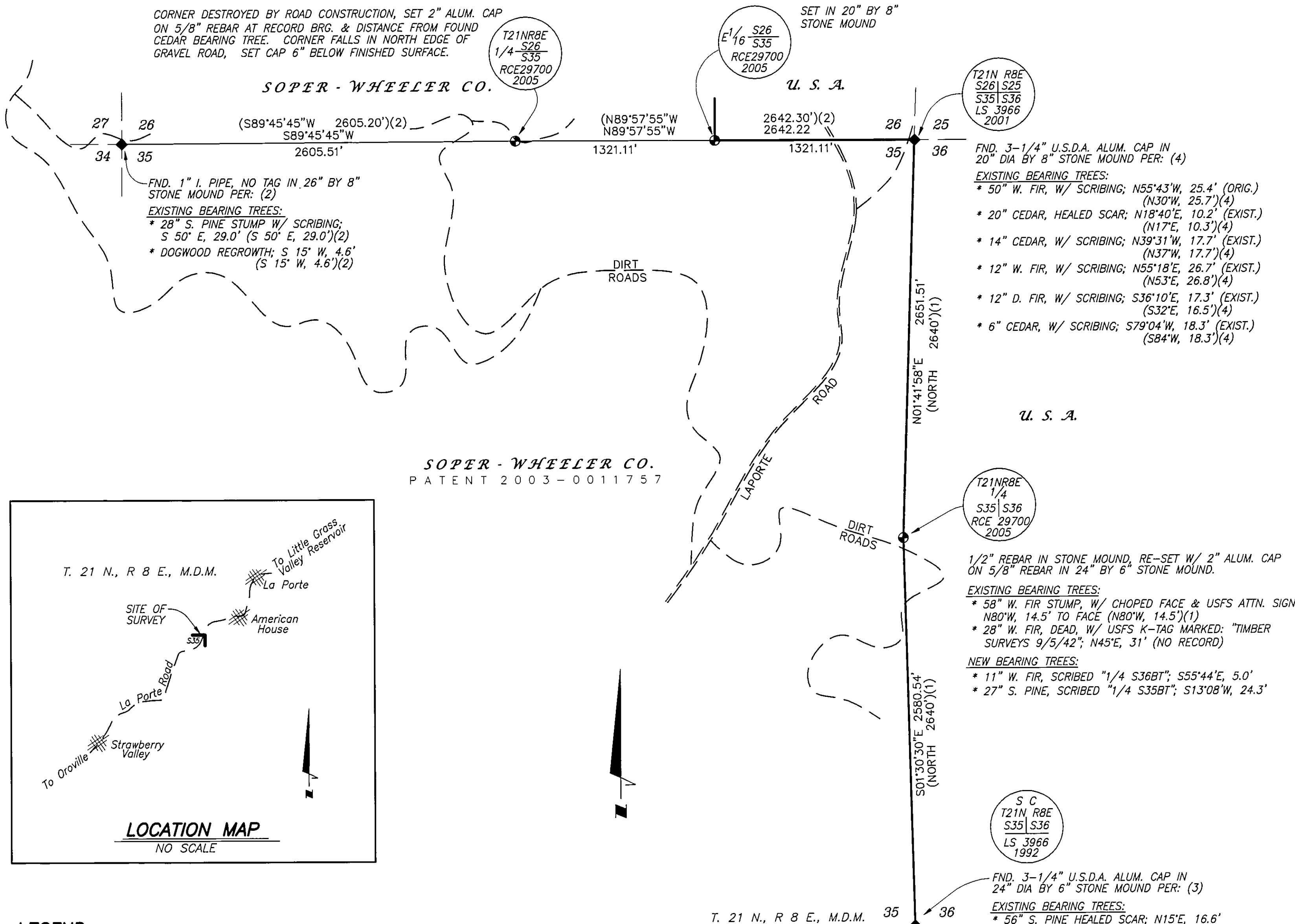
* 50"+ FIR STUMP HOLE; N60°E, 22.9' (N45°E, 23.8')(1)
* 21" CEDAR HEALED SCAR; N16°E, 24.9' (N 16°E, 24.9')(2)

CORNER DESTROYED BY ROAD CONSTRUCTION, SET 2" ALUM. CAP ON 5/8" REBAR AT RECORD BRG. & DISTANCE FROM FOUND CEDAR BEARING TREE. CORNER FALLS IN NORTH EDGE OF GRAVEL ROAD, SET CAP 6" BELOW FINISHED SURFACE.

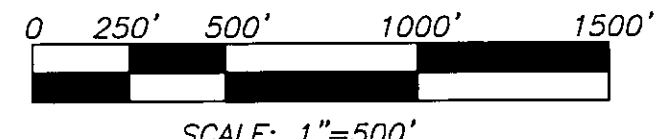
NEW BEARING TREES:

* 9" CEDAR, SCRIBED "E1/16 S35BT"; S01°56'E, 10.3'
* 18" D. FIR, SCRIBED "E1/16 S26BT"; N51°59'E, 25.9'

SET IN 20" BY 8" STONE MOUND

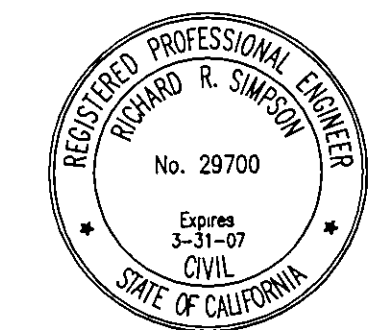


- LEGEND:**
- ◆ FOUND MONUMENT AS DESCRIBED.
 - ⊙ SET 5/8" REBAR W/2" ALUM. CAP; STAMPED: AS SHOWN
 - (1) RECORD PER: G.L.O. SURVEY BY D. C. HALL, 1884.
 - (2) RECORD DATA BY: L.S. #2670, RECORD OF SURVEYS 2-81.
 - (3) RECORD DATA BY: L.S. #3966, RECORD OF SURVEYS 9-84.
 - (4) RECORD DATA BY: L.S. #3966, RECORD OF SURVEYS 12-37.



SURVEYOR'S STATEMENT

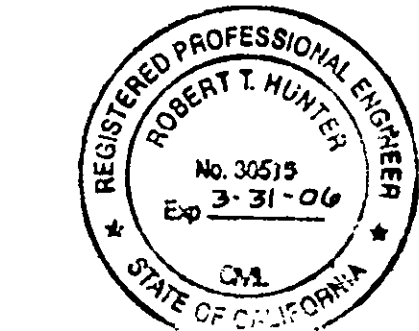
THIS MAP CORRECTLY REPRESENTS A SURVEY MADE BY ME OR UNDER MY DIRECTION IN CONFORMANCE WITH THE REQUIREMENTS OF THE PROFESSIONAL LAND SURVEYORS' ACT AT THE REQUEST OF SOPER-WHEELER CO. IN AUGUST, 2005.



Richard R. Simpson
RICHARD R. SIMPSON
R.C.E. #29700

COUNTY SURVEYOR'S STATEMENT

THIS MAP HAS BEEN EXAMINED IN ACCORDANCE WITH SECTION 8766 OF THE PROFESSIONAL LAND SURVEYORS' ACT THIS 15th DAY OF December, 2005.



R. Tom Hunter
R. TOM HUNTER, RCE 30513
LICENSE EXPIRES: 3/31/06

RECORDER'S STATEMENT

FILED THIS 15th DAY OF December, 2005 AT 11:04 A.M. IN BOOK: 13 SURVEYS AT PAGE: 145 AT THE REQUEST OF THE PLUMAS COUNTY SURVEYOR.

FEE: 8.00 KATHLEEN WILLIAMS
DOC. #: 2005-0013446 COUNTY RECORDER
By: *[Signature]* DEPUTY

BASIS OF BEARINGS:

BEARINGS ARE BASED UPON MONUMENTS FOUND ALONG THE NORTH LINE OF SECTION 35, T21N, R8E; AS SHOWN ON RECORD OF SURVEY 2-81, BY L.S. #2670.

RECORD OF SURVEY

FOR
SOPER - WHEELER CO.
BEING PORTIONS OF
SECTION 35, T.21 N., R.8 E., M.D.M.
IN THE UNINCORPORATED TERRITORY OF
THE COUNTY OF PLUMAS
STATE OF CALIFORNIA
S. & E. ENGINEERING CO.
P.O. BOX 126
NEVADA CITY, CALIFORNIA 95959
PHONE: (530) 272-7886
SCALE AS SHOWN AUGUST, 2005