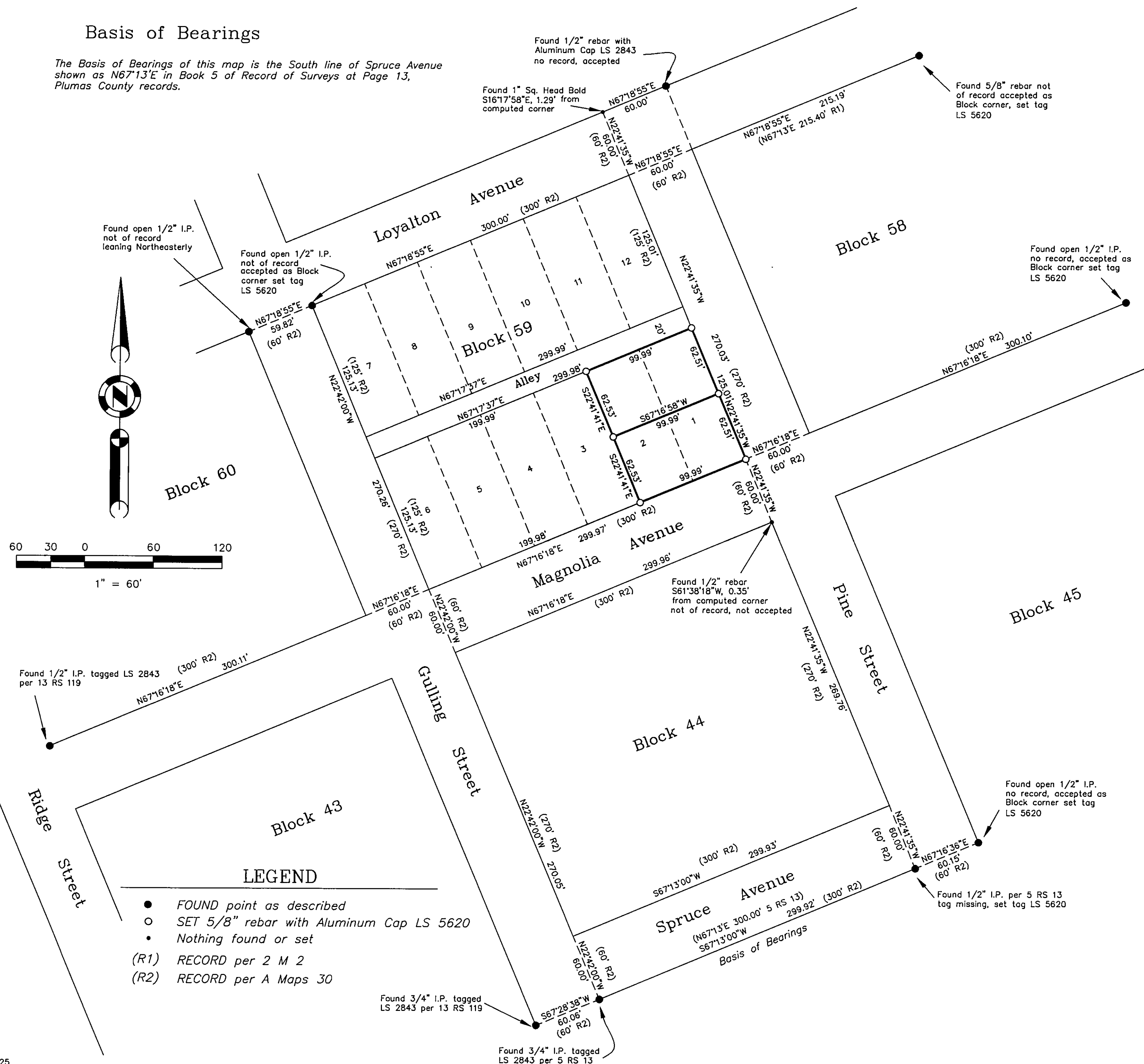


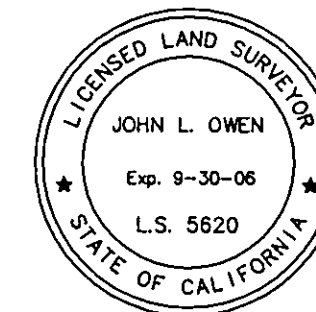
Basis of Bearings

The Basis of Bearings of this map is the South line of Spruce Avenue shown as N67°13'E in Book 5 of Record of Surveys at Page 13, Plumas County records.



SURVEYOR'S STATEMENT

This map correctly represents a survey made by me or under my direction in conformance with the requirements of the Professional Land Surveyors' Act at the request of Phil Marcantonio in August, 2005.



John L. Owen
John L. Owen LS 5620

COUNTY SURVEYOR'S STATEMENT

This map has been examined in accordance with Section 8766 of the Professional Land Surveyors' Act this 31st day of Oct., 2005.



R. Tom Hunter
R. Tom Hunter RCE 30515
PLUMAS COUNTY SURVEYOR
License Expiration Date 3/31/06

RECORDER'S STATEMENT

Filed this 31st day of October, 2005 at 10:19 a.m. in Book 13 of Record of Surveys, at page 137, at the request of the County Surveyor.

Fee: \$ 8.00

Document No. 2005-11739

Kathleen Williams
County Recorder
By: *Laura L. Davis*
Deputy

RECORD OF SURVEY for Phil Marcantonio

North 1/2 of Lots 1 & 2, Block 59, Book A Page 30
Second North Addition to Portola Townsite
A portion of Section 36
T. 23 N., R. 13 E., M.D.M.

City of Portola, Plumas County, California
Scale 1" = 60' August, 2005

Hamby Surveying Inc.
P.O. Box 1209
Portola, CA 96122
(530) 832-5571