

CORNER 13 IS THE QUARTER CORNER COMMON TO SECTION 7, T24N R10E & SECTION 12, T24N R9E.
CORNER 13 WAS NOT TIED TO IN THIS SURVEY.

CORNER 10 WAS ESTABLISHED FOR ALIGNMENT BY AN INVERSE OF CORNER 2 AND CORNER 9 AND ITS DISTANCE LOCATION BY ALLOWING EACH LOT ITS FULL DEED FRONTAGE ON BELL LANE.

QUINCY JUNCTION ROAD

N53°42'49"E 175.10
N53°48'00"E 175.00 (R4)

S35°29'53"E 109.98
S35°27'00"E 110.00 (R4)

20 RECORD SET 3/4" IP WITH TAG RCE 7294 (3 M 59)
FOUND 3/4" IP WITH TAG RCE 7294 (R4)
FOUND 1" OD STEEL PIPE WITH TAG RCE 7294 2" ABOVE GRADE
SET NOTHING

21 RECORD SET 3/4" IP WITH TAG RCE 11173 (2 RS 125)
FOUND 1 1/8" OD STEEL PIPE NO TAG 3" BELOW GRADE (2 RS 125 ASSUMED)
SET WIRED LS 7794 TAG TO FOUND STEEL PIPE



13
1872.75 (R1)
1872.75 (351 OR 297)
NOT MEASURED

3 M 59

S35°27'00"E 151.43
S35°27'00"E 151.39 (R4)
S54°33'00"W 49.66
S54°33'00"W 49.77 (R4)
S35°29'05"E 245.09
S35°27'00"E 245.00 (R4)

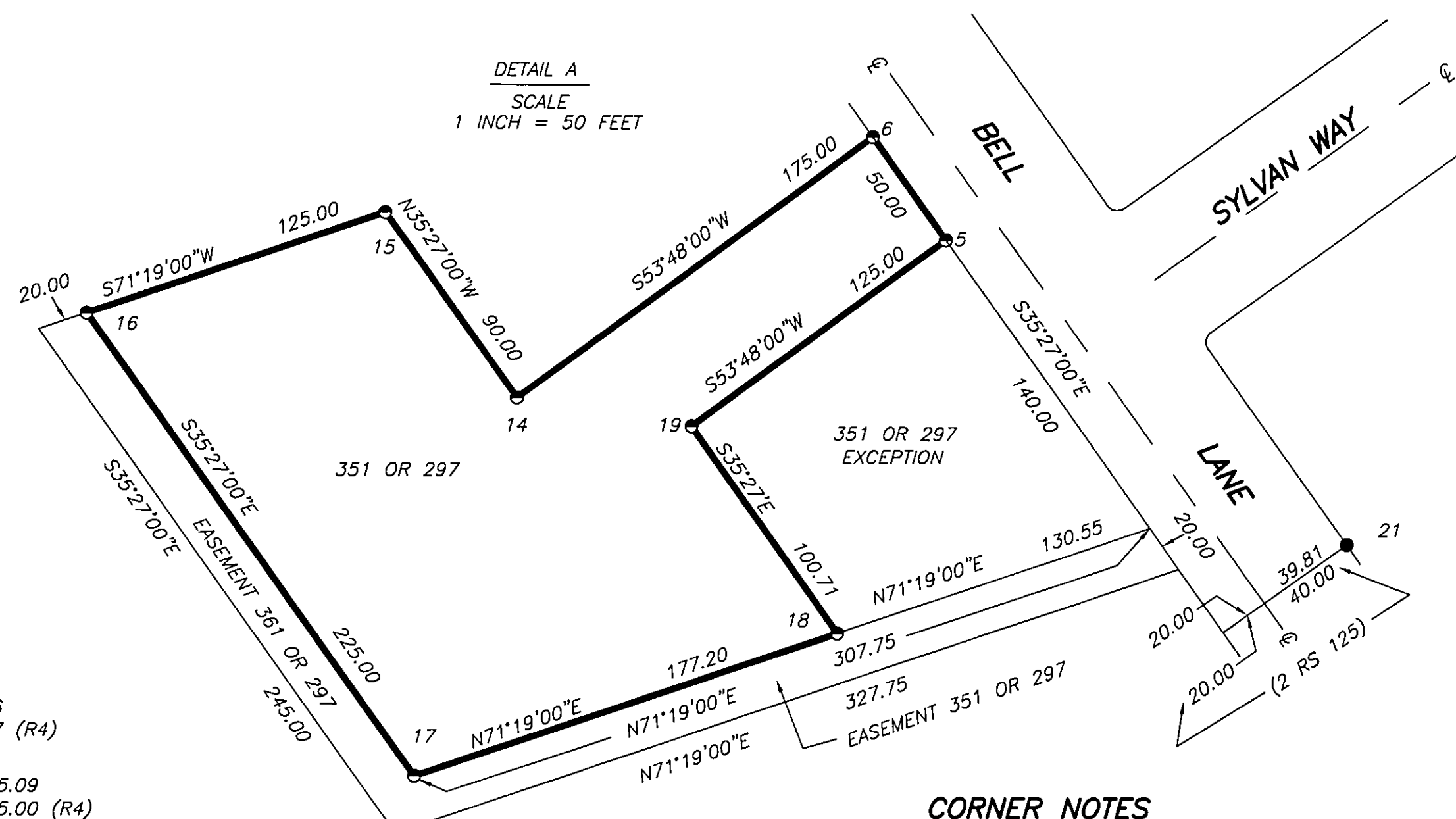
S35°27'14"E 248.79
S35°27'00"E 248.90 (R1)
S35°24'41"E 247.49
S35°27'00"E 248.90 (R1)

S35°27'20"E 292.06
S54°33'00"W 59.81
S54°33'00"W 60.00 (2 RS 125)

S35°23'03"E 69.31
S35°23'03"E 69.00 (R2)
S35°29'21"E 75.03
S35°27'00"E 75.00 (R2)

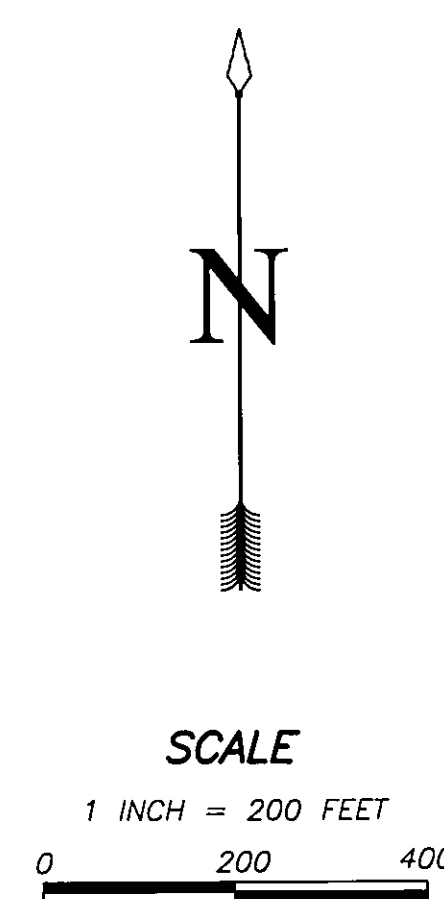


DETAIL A
SCALE
1 INCH = 50 FEET



CORNER NOTES

- 2 RECORD 3/4" IP. TRUE CORNER IS S35°27'00"E 3.60 FEET (R2)
FOUND 1" OD STEEL PIPE WITH UNREADABLE TAG, 4" BELOW GRADE
SET WIRED METAL TAG TO FOUND PIPE
- 3 RECORD 3/4" IP. TRUE CORNER IS S35°27'00"E 3.60 FEET (R2)
S34°58'59"E 3.63 FEET (R4)
FOUND 1" OD STEEL PIPE WITH UNREADABLE TAG, 4" BELOW GRADE
SET WIRED METAL TAG TO FOUND PIPE
- 4 RECORD 3/4" IP. TRUE CORNER IS S35°27'00"E 3.60 FEET (R2)
S34°58'59"E 3.81 FEET (R4)
FOUND 1" OD STEEL PIPE WITH TAG LS 2587 4" BELOW GRADE
SET THE PROPERTY OWNER SET A 1 5/16" OD STEEL PIPE 15" ABOVE GROUND ON TOP OF THE FOUND 1" OD PIPE
- 7 RECORD 3/4" IP WITH TAG LS 2587 (R3)
TRUE CORNER IS S43°00'17"E 1.41 FT (R4)
FOUND 1" OD STEEL PIPE WITH TAG LS 2587 RECESSED 1" INSIDE OF PIPE 9" BELOW GRADE
SET WIRED LS 2587 TAG TO OUTSIDE OF FOUND PIPE
- 8 RECORD 3/4" IP WITH TAG LS 2587 (R3)
FOUND 1" OD STEEL PIPE 2" BELOW GRADE
SET WIRED METAL TAG TO FOUND PIPE
- 9 RECORD 3/4" IP WITH TAG LS 2587 (R3)
FOUND 1" OD STEEL PIPE 3" ABOVE GRADE
SET WIRED METAL TAG TO FOUND PIPE
- CORNERS 11 & 12
RECORD 1/2" REBAR WITH ALUM CAP STAMPED RCE 30515 (R4)
FOUND 1/2" REBAR WITH PLASTIC CAP STAMPED "PCRD P LINE"
SET NOTHING
- CORNERS 5, 6, 14, 15, 16, 17, 18, & 19
RECORD NOTHING SET
FOUND NOTHING
SET STANDARD MONUMENT



BASIS OF BEARING

S35°27'00"E, BEING THE SOUTHWESTERLY LINE OF BELL LANE AS SHOWN ON 10 RS 72 (R4)

GENERAL NOTES

THE BEARING OF THE SOUTHWESTERLY LINE OF BELL LANE WAS ESTABLISHED ON 10 RS 72 (R4), PER THE COUNTY ENGINEER'S CHIEF SURVEYOR, BY THE INVERSE OF CORNER 2 AND CORNER 9.
THE TRUE DEED CORNER NEAR CORNER 2 IS S35°27'00"E 3.60 FEET FROM CORNER 2 AS SHOWN ON 1 RS 16 (R2)
THE TRUE DEED CORNER NEAR CORNER 9 IS N35°27'00"W 1.43 FEET [N35°27'00"W 1.39 FEET ON 10 RS 72 (R4)].
IN SETTING CORNERS 5 AND 6 EACH LOT OWNER BETWEEN CORNER 2 AND CORNER 10 RECEIVES THEIR FULL DEED FRONTAGE ON BELL LANE. THIS IS CONSISTENT WITH THE METHOD THE COUNTY USED IN SETTING CORNER 11 ON 10 RS 72 (R4).

METAL TAG IS A 1 1/2" DIAMETER STAINLESS STEEL WASHER STAMPED "RICHARD KNOETTGEN LS 7794"
A STANDARD MONUMENT IS A 1/2" REBAR WITH A 1 1/2" ALUMINUM CAP STAMPED "RICHARD KNOETTGEN LS 7794"

LEGEND

- FOUND MONUMENT AS DESCRIBED
- SET STANDARD MONUMENT
- CALCULATED POINT, NOTHING SET
- (R1) RECORD PER 1 RS 3
- (R1/C) RECORD PER 1 RS 3 CALCULATED
- (R2) RECORD PER 1 RS 16
- (R3) RECORD PER 1 RS 57
- (R4) RECORD PER 10 RS 72

SURVEYOR'S STATEMENT

This map correctly represents a survey made by me or under my direction in conformance with the requirements of the Land Surveyors' Act at the request of Hal & Virginia Oleari in October, 2002.
Richard Knoettgen
Richard Knoettgen, LS 7794
License Exp. Date 12/31/05

COUNTY SURVEYOR'S STATEMENT

This map has been examined in accordance with Section, 8766 of the Land Surveyors' Act this 25th day of March, 2003.
R. Tom Hunter
R. Tom Hunter R.C.E. 30515
Plumas County Surveyor
License Exp. Date 03/31/04

RECORDER'S STATEMENT

Filed this 26th day of March, 2003 at 2:24 p.m. in Book 12 of Records of Surveys, at page 118, at the request of the County Surveyor.
Fee: \$ 6.00
File No: 2003-0443220
Kathleen Williams
County Recorder
Tamara Sieck
Deputy

RECORD OF SURVEY

FOR HAL AND VIRGINIA OLEARI
LOCATED IN SECTION 12 T24N R9E & SECTIONS 7 & 18 T24N R10E MDM PLUMAS COUNTY, CALIFORNIA
KNOETTGEN LAND SURVEYING
PO BOX 312 QUINCY CALIFORNIA 95971
(530) 283-4418
NOVEMBER 2002 SHEET: 1 OF 1