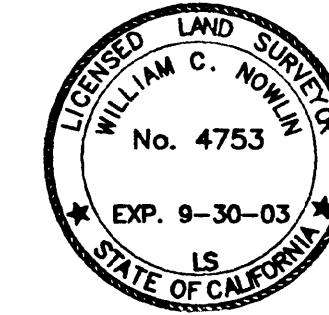


CORS
BASE CTR
587.52
7516.64

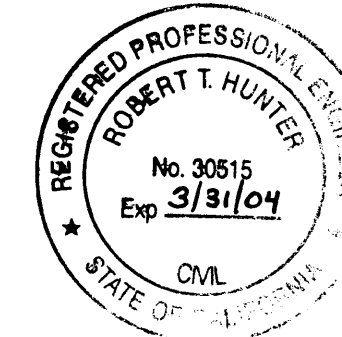
SURVEY OF PLUMAS COUNTY
 THIS MAP CORRECTLY REPRESENTS A SURVEY MADE
 BY ME IN MY DIRECTION IN CONFORMANCE
 WITH THE REQUIREMENTS OF THE LAND SURVEYORS
 ACT AT THE REQUEST OF THE U.S. FOREST SERVICE
 IN JULY, 2002



SIGNED William C. Nowlin
 WILLIAM C. NOWLIN, L.S. 4753

COUNTY SURVEYOR'S STATEMENT:
 THIS MAP HAS BEEN EXAMINED IN ACCORDANCE
 WITH SECTION 8766 OF THE LAND SURVEYORS'
 ACT THIS 27th DAY OF December, 2002.

SIGNED R. Tom Hunter
 PLUMAS COUNTY SURVEYOR
 R. TOM HUNTER, R.C.E. 30515
 REG. EXP. 3/31/04



COUNTY RECORDER'S STATEMENT
 FILED THIS 23rd DAY OF January, 2003
 AT 2:12 P. M., IN BOOK 12 OF RECORD OF
 SURVEYS AT PAGE 104, AT THE REQUEST OF
 THE PLUMAS COUNTY SURVEYOR.

PLUMAS COUNTY RECORDER
 KATHLEEN WILLIAMS

BY Denny Samuel
 DEPUTY

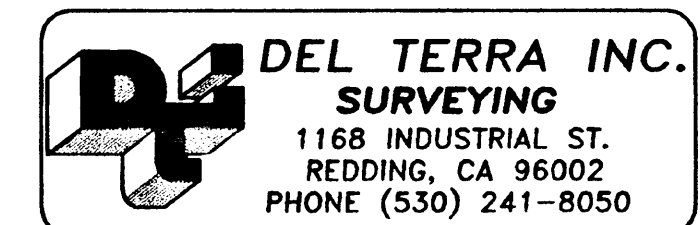
FEE \$14.00 DOC.# 2003-844

RECORD OF SURVEY

USDA FOREST SERVICE
 PLUMAS NATIONAL FOREST

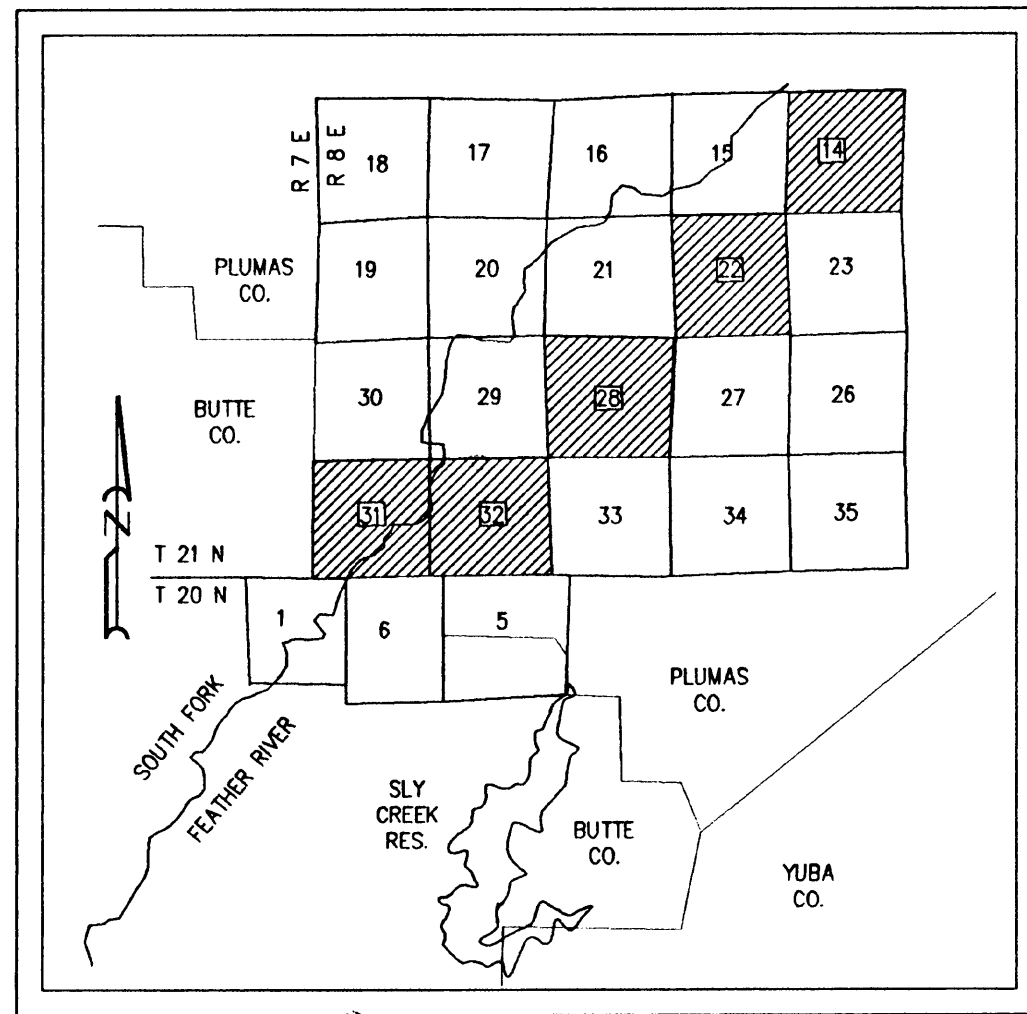
"SOUTH FORK CADASTRAL"

IN SECTIONS 14, 22, 28, 31 AND 32,
 T. 21 N., R. 8 E., M.D.M.
 IN THE UNINCORPORATED AREA
 OF PLUMAS COUNTY,
 STATE OF CALIFORNIA



SCALE: 1" = 1200' DATE: JULY, 2002

SHEET 1 OF 4

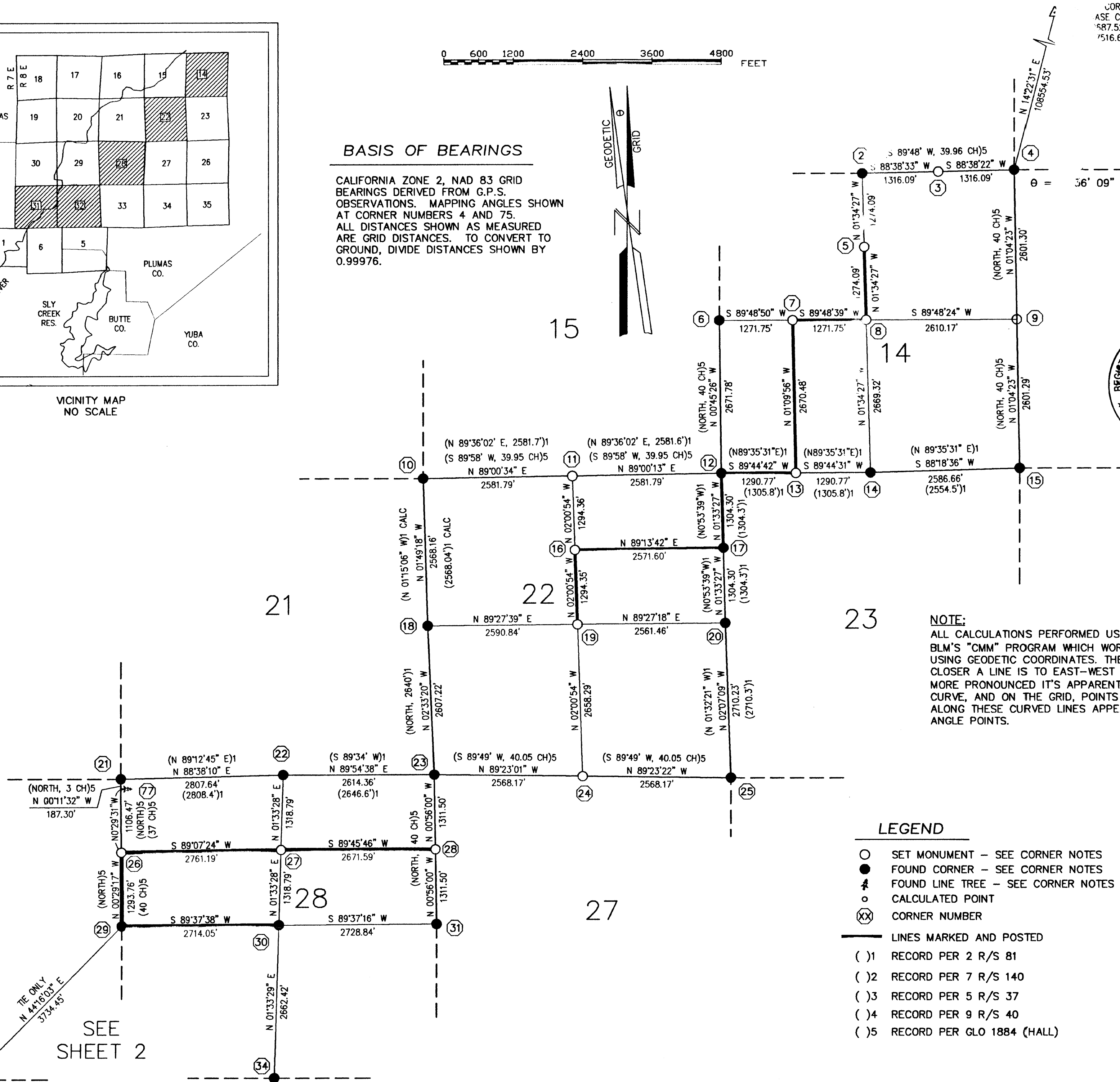


VICINITY MAP
 NO SCALE

0 600 1200 2400 3600 4800 FEET

BASIS OF BEARINGS

CALIFORNIA ZONE 2, NAD 83 GRID
 BEARINGS DERIVED FROM G.P.S.
 OBSERVATIONS. MAPPING ANGLES SHOWN
 AT CORNER NUMBERS 4 AND 75.
 ALL DISTANCES SHOWN AS MEASURED
 ARE GRID DISTANCES. TO CONVERT TO
 GROUND, DIVIDE DISTANCES SHOWN BY
 0.99976.



NOTE:
 ALL CALCULATIONS PERFORMED USING
 BLM'S "CMM" PROGRAM WHICH WORKS
 USING GEODETIC COORDINATES. THE
 CLOSER A LINE IS TO EAST-WEST THE
 MORE PRONOUNCED IT'S APPARENT
 CURVE, AND ON THE GRID, POINTS
 ALONG THESE CURVED LINES APPEAR AS
 ANGLE POINTS.

LEGEND

- SET MONUMENT - SEE CORNER NOTES
- FOUND CORNER - SEE CORNER NOTES
- ✱ FOUND LINE TREE - SEE CORNER NOTES
- CALCULATED POINT
- ⊗ CORNER NUMBER
- LINES MARKED AND POSTED
- (1) RECORD PER 2 R/S 81
- (2) RECORD PER 7 R/S 140
- (3) RECORD PER 5 R/S 37
- (4) RECORD PER 9 R/S 40
- (5) RECORD PER GLO 1884 (HALL)

SEE SHEET 2