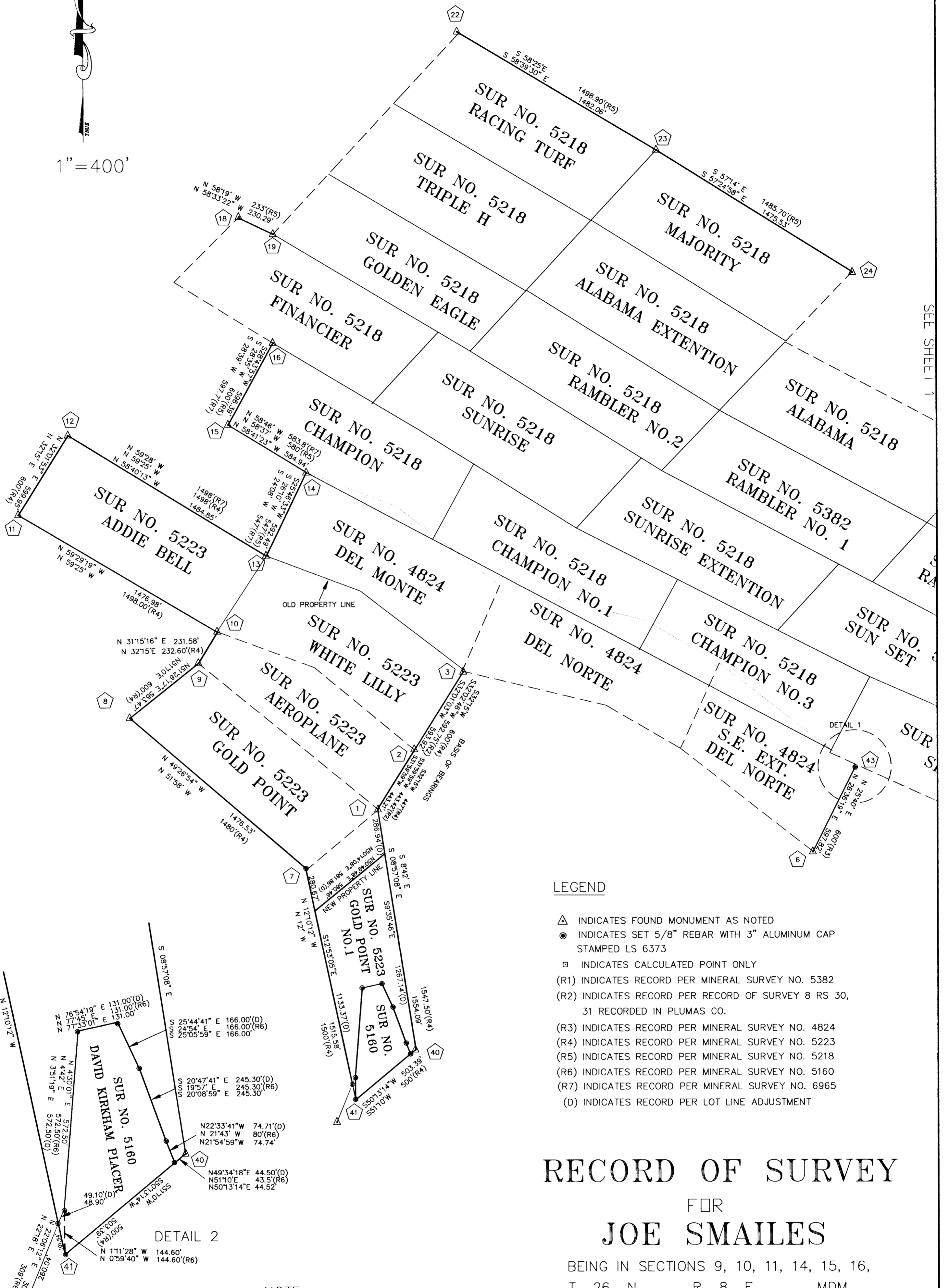


1"=400'



SEE SHEET 1

LEGEND

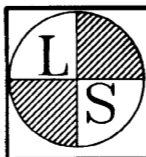
- ▲ INDICATES FOUND MONUMENT AS NOTED
- INDICATES SET 5/8" REBAR WITH 3" ALUMINUM CAP STAMPED LS 6373
- INDICATES CALCULATED POINT ONLY
- (R1) INDICATES RECORD PER MINERAL SURVEY NO. 5382
- (R2) INDICATES RECORD PER RECORD OF SURVEY 8 RS 30, 31 RECORDED IN PLUMAS CO.
- (R3) INDICATES RECORD PER MINERAL SURVEY NO. 4824
- (R4) INDICATES RECORD PER MINERAL SURVEY NO. 5223
- (R5) INDICATES RECORD PER MINERAL SURVEY NO. 5218
- (R6) INDICATES RECORD PER MINERAL SURVEY NO. 5160
- (R7) INDICATES RECORD PER MINERAL SURVEY NO. 6965
- (D) INDICATES RECORD PER LOT LINE ADJUSTMENT

# RECORD OF SURVEY FOR JOE SMAILES

BEING IN SECTIONS 9, 10, 11, 14, 15, 16, T 26 N, R 8 E, MDM. PLUMAS COUNTY, CALIFORNIA

99-06-045

JULY, 2000



## L & L SURVEYING

1007 BILLE ROAD PO BOX 671 PARADISE, CA 95967 (916)877-4300

12 RS 96

96

NOTE:

THIS RECORD OF SURVEY WAS PREPARED TO REFLECT A LOT LINE ADJUSTMENT FOR WHICH A RESOLUTION IS RECORDED AS DOCUMENT 2000-09943 PLUMAS COUNTY RECORDS.

FD 2" IP ACCEPTED AS COR 3 DAVID KIRKHAM