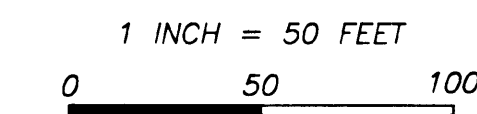


SCALE



BASIS OF BEARING

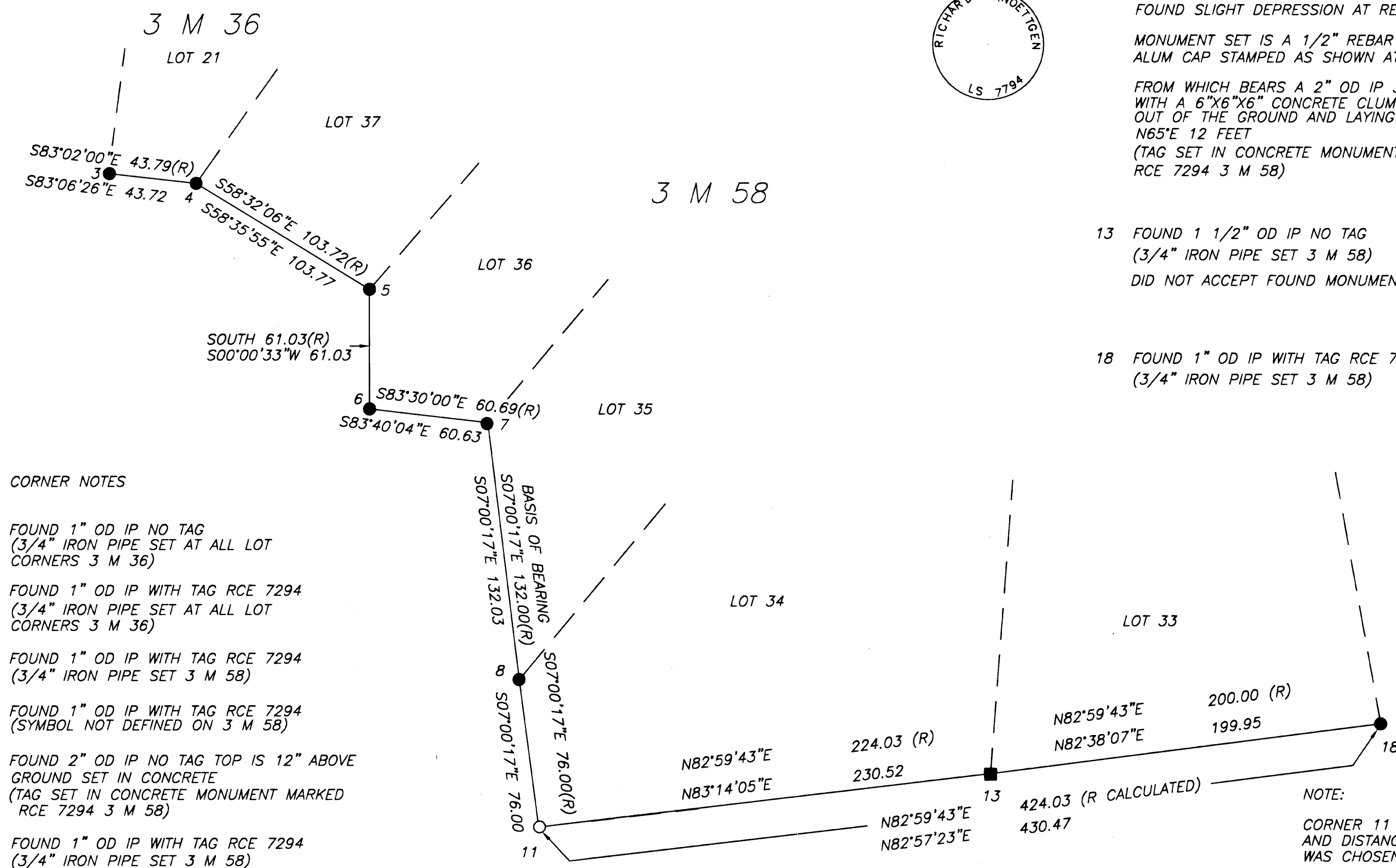
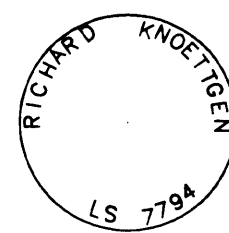
S07°00'17"E BEING THE WESTERLY LINE OF LOT 35 AS SHOWN ON 3 M 58

LEGEND

- FOUND MONUMENT AS DESCRIBED
- FOUND MONUMENT DID NOT ACCEPT
- SET MONUMENT AS DESCRIBED
- (R) RECORD 3 M 36 & 3 M 58

CORNER NOTES CONTINUED

- 11 RESET CORNER AT RECORD BEARING AND DISTANCE FROM CORNER 8. FOUND SLIGHT DEPRESSION AT RESET LOCATION. MONUMENT SET IS A 1/2" REBAR WITH A 1 1/2" ALUM CAP STAMPED AS SHOWN AT LEFT FROM WHICH BEARS A 2" OD IP 36" LONG WITH A 6"X6"X6" CONCRETE CLUMP AT BASE OUT OF THE GROUND AND LAYING DOWN N65°E 12 FEET (TAG SET IN CONCRETE MONUMENT MARKED RCE 7294 3 M 58)
- 13 FOUND 1 1/2" OD IP NO TAG (3/4" IRON PIPE SET 3 M 58) DID NOT ACCEPT FOUND MONUMENT AS ORIGINAL
- 18 FOUND 1" OD IP WITH TAG RCE 7294 (3/4" IRON PIPE SET 3 M 58)



CORNER NOTES

- 3 FOUND 1" OD IP NO TAG (3/4" IRON PIPE SET AT ALL LOT CORNERS 3 M 36)
- 4 FOUND 1" OD IP WITH TAG RCE 7294 (3/4" IRON PIPE SET AT ALL LOT CORNERS 3 M 36)
- 5 FOUND 1" OD IP WITH TAG RCE 7294 (3/4" IRON PIPE SET 3 M 58)
- 6 FOUND 1" OD IP WITH TAG RCE 7294 (SYMBOL NOT DEFINED ON 3 M 58)
- 7 FOUND 2" OD IP NO TAG TOP IS 12" ABOVE GROUND SET IN CONCRETE (TAG SET IN CONCRETE MONUMENT MARKED RCE 7294 3 M 58)
- 8 FOUND 1" OD IP WITH TAG RCE 7294 (3/4" IRON PIPE SET 3 M 58)

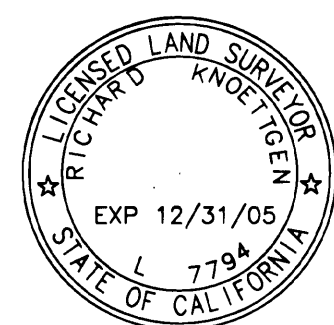
NOTE:

CORNER 11 WAS RESET USING RECORD BEARING AND DISTANCE FROM CORNER 8. THIS SOLUTION WAS CHOSEN FOR THE FOLLOWING REASON:

THE GROUND BETWEEN CORNER 8 AND CORNER 11 IS FLAT AND FAIRLY OPEN WHILE THE GROUND BETWEEN CORNER 11 AND CORNER 18 IS STEEP, HEAVILY VEGETATED AND HAS A CREEK CROSSING.

THEREFORE THE DISTANCE ERROR WAS MORE LIKELY TO OCCUR BETWEEN CORNER 11 AND CORNER 18.

ALTERNATE SOLUTIONS FOR RESETTING CORNER 11 DO EXIST AND THESE SOLUTIONS WOULD CAUSE CORNER 11 TO BE RESET IN DIFFERENT LOCATIONS.



SURVEYOR'S STATEMENT

This map correctly represents a survey made by me or under my direction in conformance with the requirements of the Land Surveyors' Act at the request of William T. Evans in March, 20 02.

Richard Knoettgen
Richard Knoettgen L 7794
License Exp. Date 12/31/05

COUNTY SURVEYOR'S STATEMENT

This map has been examined in accordance with Section 8766 of the Land Surveyors' Act this 10th day of September, 20 02.

R. Tom Hunter
R. Tom Hunter R.C.E. 30515
Plumas County Surveyor
License Exp. Date 03/31/04

RECORDER'S STATEMENT

Filed this 11th day of September, 20 02 at 1:47 P.m. in Book 12 of Records of Surveys, at page 79, at the request of the County Surveyor.

Fee: \$800
File No: 2002-9063
By: *Judith Wells*
Judith Wells
County Recorder
Deputy

RECORD OF SURVEY

FOR WILLIAM T. EVANS
LOCATED IN SECTION 22 T25N R8E MDM
A PORTION OF OLD MILL RANCH SUBDIVISION UNIT NO. ONE (3 M 36)
AND UNIT NO. TWO (3 M 58) PLUMAS COUNTY, CALIFORNIA
KNOETTGEN LAND SURVEYING
PO BOX 312 QUINCY CALIFORNIA 95971
(530) 283-4418

APRIL 2002

SHEET: 1 OF 1