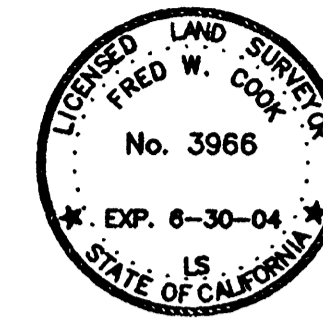


BASIS OF BEARINGS

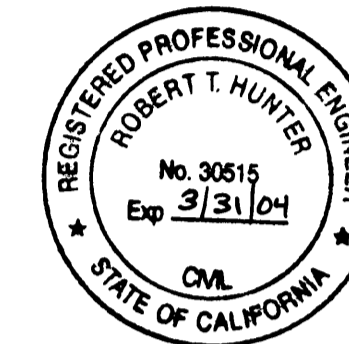
CALIFORNIA ZONE 2, NAD 83 GRID BEARINGS
 DERIVED FROM FAST STATIC G.P.S.
 OBSERVATIONS.
 EPOCH DATE: 1997.0
 ADJUSTMENT DATE: 10-25-01
 MAPPING ANGLES SHOWN AT CORNER NUMBERS
 15 AND 22.
 ALL DISTANCES SHOWN AS MEASURED ARE GRID
 DISTANCES. TO CONVERT TO GROUND, DIVIDE
 DISTANCES SHOWN BY 0.999795.



SURVEYOR'S STATEMENT

THIS MAP CORRECTLY REPRESENTS A SURVEY MADE
 BY ME OR UNDER MY DIRECTION IN CONFORMANCE
 WITH THE REQUIREMENTS OF THE LAND SURVEYORS'
 ACT AT THE REQUEST OF THE US FOREST SERVICE
 IN OCTOBER, 2001

SIGNED Fred W. Cook
 FRED W. COOK, L.S. 3966



COUNTY SURVEYOR'S STATEMENT

THIS MAP HAS BEEN EXAMINED IN ACCORDANCE
 WITH SECTION 8766 OF THE LAND SURVEYORS'
 ACT THIS 24th DAY OF May, 2002.

SIGNED R. Tom Hunter
 PLUMAS COUNTY SURVEYOR
 R. TOM HUNTER, R.C.E. 30515
 REG. EXP. 3/31/04

COUNTY RECORDER'S STATEMENT

FILED THIS 29th DAY OF May, 2002,
 AT 11:27 A.M., IN BOOK 12 OF RECORD OF
 SURVEYS AT PAGE 65-66, AT THE REQUEST OF
 THE PLUMAS COUNTY SURVEYOR.

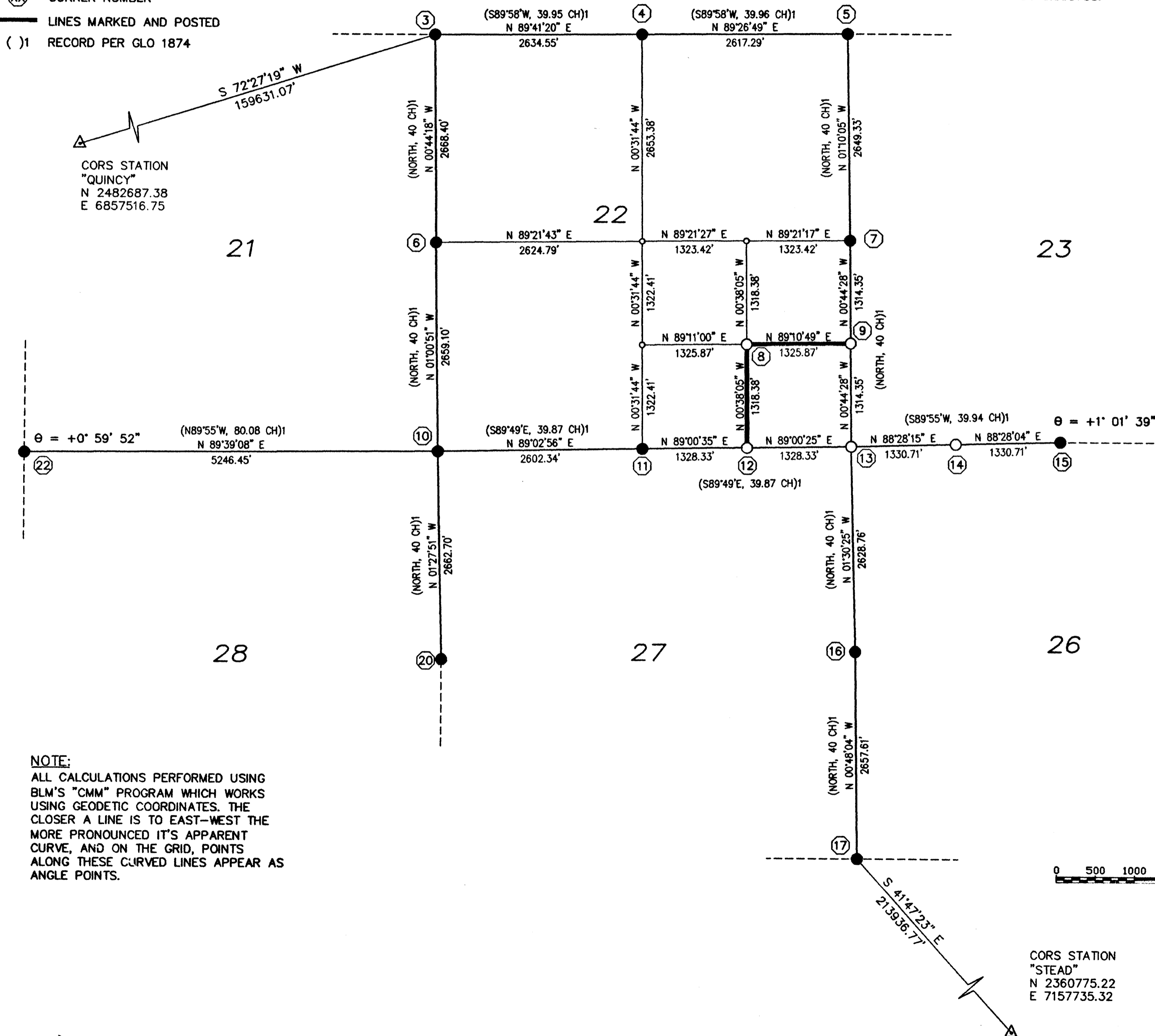
PLUMAS COUNTY RECORDER
 JUDITH WELLS

BY Denny Samuel
 DEPUTY

FEE \$10⁰⁰ DOC.# 2002-5052

LEGEND

- SET MONUMENT - SEE CORNER NOTES
- FOUND CORNER - SEE CORNER NOTES
- CALCULATED POINT
- ⓧ CORNER NUMBER
- LINES MARKED AND POSTED
- () RECORD PER GLO 1874



NOTE:
 ALL CALCULATIONS PERFORMED USING
 BLM'S "CMM" PROGRAM WHICH WORKS
 USING GEODETIC COORDINATES. THE
 CLOSER A LINE IS TO EAST-WEST THE
 MORE PRONOUNCED IT'S APPARENT
 CURVE, AND ON THE GRID, POINTS
 ALONG THESE CURVED LINES APPEAR AS
 ANGLE POINTS.

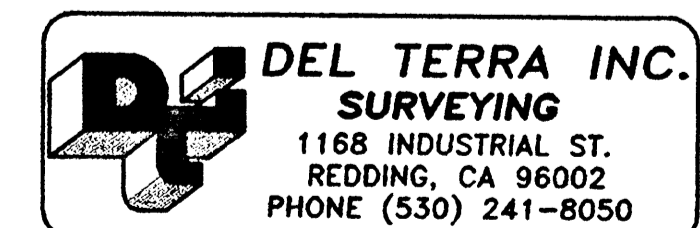
CORS STATION
 "STEAD"
 N 2360775.22
 E 7157735.32

RECORD OF SURVEY

FOR
 USDA FOREST SERVICE
 PLUMAS NATIONAL FOREST

"LAST CHANCE 2"

IN SECTIONS 21, 22, 23, 26, 27 AND 28 IN
 T. 26 N., R. 14 E., M.D.M., IN THE
 UNINCORPORATED AREA OF PLUMAS COUNTY,
 STATE OF CALIFORNIA



DATE: OCTOBER, 2001
 SHEET 1 OF 2