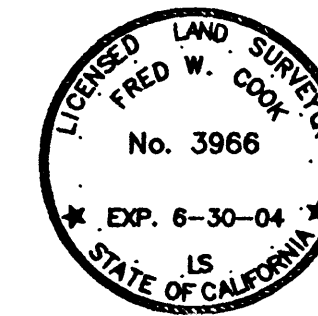


SURVEYOR'S STATEMENT

THIS MAP CORRECTLY REPRESENTS A SURVEY MADE BY ME OR UNDER MY DIRECTION IN CONFORMANCE WITH THE REQUIREMENTS OF THE LAND SURVEYORS' ACT AT THE REQUEST OF THE US FOREST SERVICE IN JULY, 2001

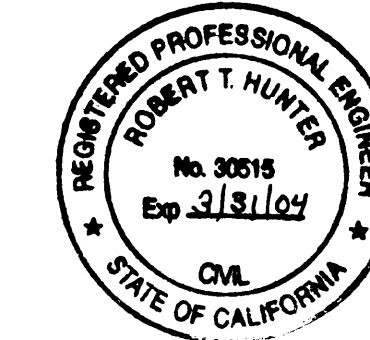
SIGNED Fred W. Cook
FRED W. COOK, L.S. 3966



COUNTY SURVEYOR'S STATEMENT

THIS MAP HAS BEEN EXAMINED IN ACCORDANCE WITH SECTION 8766 OF THE LAND SURVEYORS' ACT THIS 24th DAY OF April, 2002.

SIGNED R. Tom Hunter
PLUMAS COUNTY SURVEYOR
R. TOM HUNTER, R.C.E. 30515
REG. EXP. 3/31/04



COUNTY RECORDER'S STATEMENT

FILED THIS 30th DAY OF April, 2002, AT 12:50 P. M., IN BOOK 12 OF RECORD OF SURVEYS AT PAGE 58, AT THE REQUEST OF THE PLUMAS COUNTY SURVEYOR.

PLUMAS COUNTY RECORDER
JUDITH WELLS

BY Jane Hancock
DEPUTY

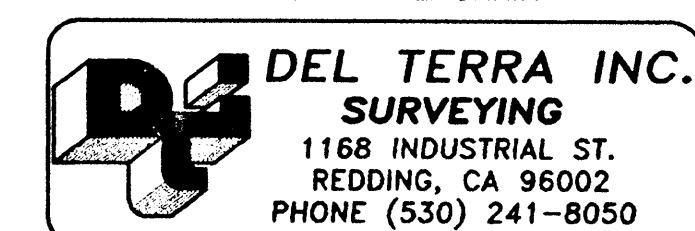
FEE \$ 8⁰⁰ DOC.# 2002-3954

RECORD OF SURVEY

FOR
**USDA FOREST SERVICE
PLUMAS NATIONAL FOREST**

"CRYSTAL ADAMS 2"

IN SECTION 25 T 24 N., R 16 E AND SECTION 30 T 24 N., R 17 E, MDM, IN THE UNINCORPORATED AREA OF PLUMAS COUNTY, STATE OF CALIFORNIA



SCALE: 1" = 200' DATE: AUGUST, 2001
SHEET 1 OF 1

<p>CORNER No. 1</p> <p>T24N R16E S25 PROPERTY COR LC NO. 1-4 LS 4570 1988</p> <p>FD. A 3 1/4" USFS ALUM. CAP ON A 5/8" ALUM ROD IN A MOUND OF STONE. CORNER FALLS ON A STEEP SOUTHWEST SLOPE.</p> <p>FD. A 20" PONDEROSA PINE, N12 1/2°W, 24.2' -VS REC. A 16" PONDEROSA PINE, N11°22'W, 24.2' ()2 FD. A 17" PONDEROSA PINE, N46 1/2°E, 27.1' -VS REC. A 14" PONDEROSA PINE, N47°48'E, 27.1' ()2 SCRIBED A 13" PONDEROSA PINE, S12°W, 35.1' "COR 3 LC2 MS 5519 BT"</p>	<p>CORNER No. 2</p> <p>T24N R17E S30 PROPERTY COR LC NO. 2-3 LC NO.3-1 LS 4570 1988</p> <p>FD. A 3 1/4" USFS ALUM. CAP ON A 5/8" ALUM ROD IN A MOUND OF STONE. CORNER FALLS ON A MODERATE SOUTHWEST SLOPE IN TIMBER.</p> <p>FD. A 40" PONDEROSA PINE, S87°E, 14.0' -VS REC. A 39" PONDEROSA PINE, S86°06'E, 14.0' ()2 FD. A 13" PONDEROSA PINE, N46 1/2°W, 8.6' -VS REC. AN 11" PONDEROSA PINE, N45°29'W, 8.6' ()2 SCRIBED A 13" PONDEROSA PINE, S12°W, 35.1' "COR 3 LC2 MS 5519 BT"</p>	<p>CORNER No. 3</p> <p>MS 5519 LC1-1 LS 3966 2001</p> <p>FD. A 4 X 4 POST WITH VS IN A MOUND OF STONE ()1. SET A 3 1/4" USFS ALUM. CAP ON A 5/8" ALUM ROD, FRESHENED MOUND AND PLACED POST ALONGSIDE. CORNER FALLS ON A GENTLE SOUTHWEST SLOPE NEAR THE TOP OF A RIDGE.</p> <p>FD. A 35" YELLOW PINE, S32°47'E, 46.6' -VS REC. A 24" YELLOW PINE, S32°47'E, 46.6' ()1 REC. 36" YELLOW PINE PER ()1 -SNF SCRIBED A 12" YELLOW PINE, N10°E, 8.1' "MS 5519 LC1-1 BT"</p>
--	--	--

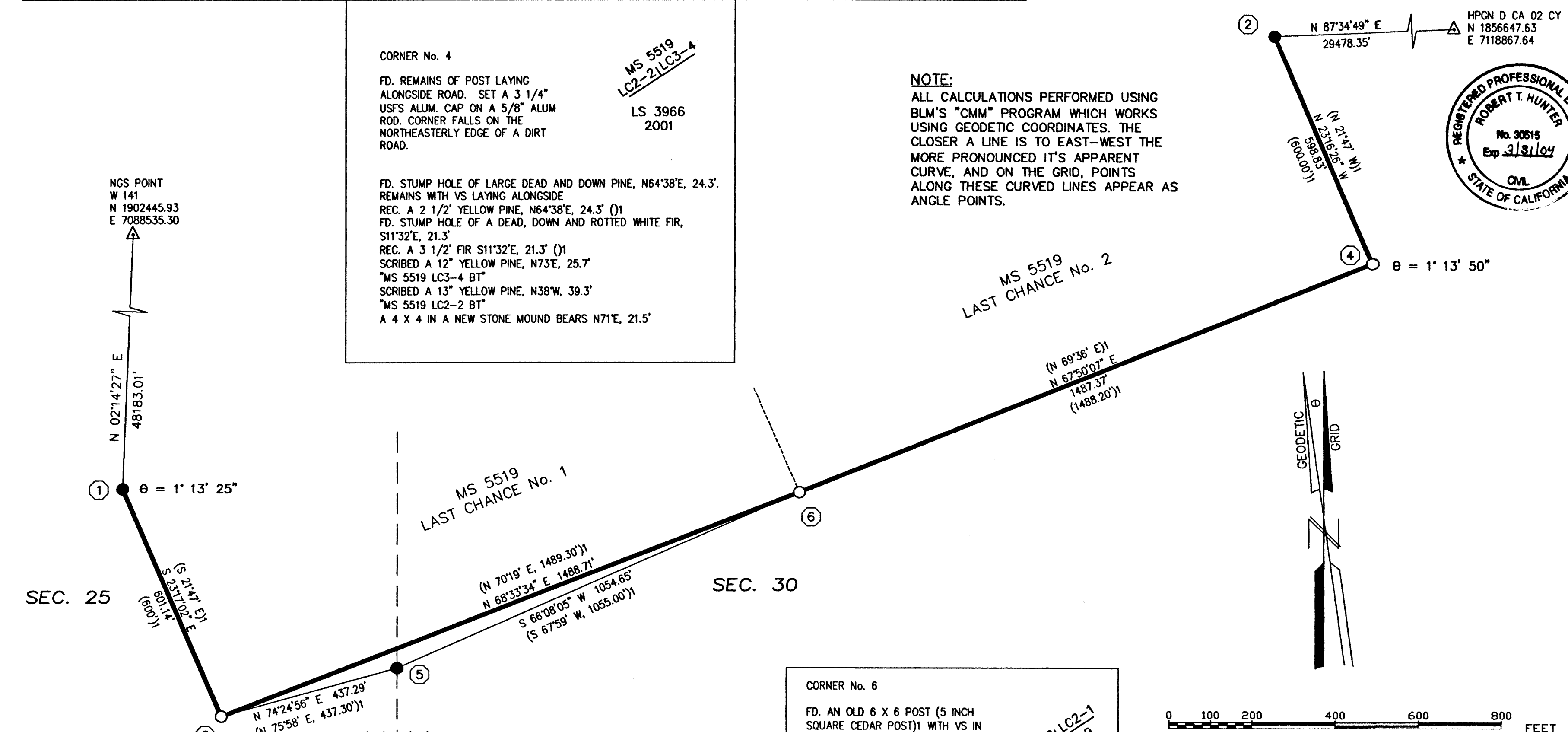
CORNER No. 4

MS 5519 LC2-2/LC3-4 LS 3966 2001

FD. REMAINS OF POST LAYING ALONGSIDE ROAD. SET A 3 1/4" USFS ALUM. CAP ON A 5/8" ALUM ROD. CORNER FALLS ON THE NORTHEASTERLY EDGE OF A DIRT ROAD.

FD. STUMP HOLE OF LARGE DEAD AND DOWN PINE, N64°38'E, 24.3'. REMAINS WITH VS LAYING ALONGSIDE
REC. A 2 1/2" YELLOW PINE, N64°38'E, 24.3' ()1
FD. STUMP HOLE OF A DEAD, DOWN AND ROTTED WHITE FIR, S11°32'E, 21.3'
REC. A 3 1/2" FIR S11°32'E, 21.3' ()1
SCRIBED A 12" YELLOW PINE, N73°E, 25.7' "MS 5519 LC3-4 BT"
SCRIBED A 13" YELLOW PINE, N38°W, 39.3' "MS 5519 LC2-2 BT"
A 4 X 4 IN A NEW STONE MOUND BEARS N71°E, 21.5'

NOTE:
ALL CALCULATIONS PERFORMED USING BLM'S "CMM" PROGRAM WHICH WORKS USING GEODETIC COORDINATES. THE CLOSER A LINE IS TO EAST-WEST THE MORE PRONOUNCED IT'S APPARENT CURVE, AND ON THE GRID, POINTS ALONG THESE CURVED LINES APPEAR AS ANGLE POINTS.



<p>CORNER No. 5</p> <p>US GLO 1/4 S25 1924</p> <p>FD. A 2 1/2" GLO BRASS CAP ON A 1" IRON PIPE IN A MOUND OF STONE. CORNER FALLS ON A GENTLE SOUTHWEST SLOPE, 40± NORTHWEST OF A DRAW DRAINING SOUTH-SOUTHWEST.</p> <p>FD. A 27" YELLOW PINE, N72°W, 30.3' -VS REC. A 24" YELLOW PINE, N78°W, 30.4' ()3 FD. A DEAD AND DOWN 18" YELLOW PINE N6°W, 11'± -VS REC. A 14" YELLOW PINE, N6 1/2°W, 10.6' ()3</p>	<p>CORNER No. 6</p> <p>LC1-2/LC2-1 MS 5519 LS 3966 2001</p> <p>FD. AN OLD 6 X 6 POST (5 INCH SQUARE CEDAR POST) WITH VS IN A MOUND OF STONE. SET A 3 1/4" USFS ALUM. CAP ON A 5/8" ALUM ROD, FRESHENED MOUND AND PLACED POST ALONGSIDE. CORNER FALLS AT THE NORTHEAST EDGE OF A 7" FIR ON A MODERATE NORTHEAST SLOPE, 25± SOUTHWEST OF A DIRT ROAD.</p> <p>42" FIR PER ()1 -SNF 10" FIR PER ()1 -SNF FD. A NEW 4 X 4 REDWOOD POST, S23°E, 7.3' NO REC. SCRIBED. A 15" YELLOW PINE, N27°E, 11.2' "MS 5519 LC2-1 BT" SCRIBED AN 11" YELLOW PINE, N25°W, 20.9' "MS 5519 LC1-2 BT"</p>
--	--

BASIS OF BEARINGS

CALIFORNIA ZONE 1, NAD 83 GRID BEARINGS DERIVED FROM FAST STATIC G.P.S. OBSERVATIONS. EPOCH DATE: 1991.35 ADJUSTMENT DATE: 10-25-01 MAPPING ANGLES SHOWN AT CORNER NUMBERS 1 AND 4. ALL DISTANCES SHOWN AS MEASURED AROUND GRID DISTANCES. TO CONVERT TO GRID, DIVIDE DISTANCES SHOWN BY 0.99971.