

SURVEYOR'S STATEMENT
 THIS MAP CORRECTLY REPRESENTS A SURVEY MADE BY ME OR UNDER MY DIRECTION IN CONFORMANCE WITH THE REQUIREMENTS OF THE LAND SURVEYORS' ACT AT THE REQUEST OF THE US FOREST SERVICE IN JULY, 2001

SIGNED *Fred W. Cook*
 FRED W. COOK, L.S. 3966

COUNTY SURVEYOR'S STATEMENT
 THIS MAP HAS BEEN EXAMINED IN ACCORDANCE WITH SECTION 8766 OF THE LAND SURVEYORS' ACT THIS 24th DAY OF April, 2002.

SIGNED *R. Tom Hunter*
 PLUMAS COUNTY SURVEYOR
 R. TOM HUNTER, R.C.E. 30515
 REG. EXP. 3/31/04

COUNTY RECORDER'S STATEMENT
 FILED THIS 25th DAY OF April, 2002, AT 1:55 P. M. IN BOOK 12 OF RECORD OF SURVEYS AT PAGE 56-57, AT THE REQUEST OF THE PLUMAS COUNTY SURVEYOR.

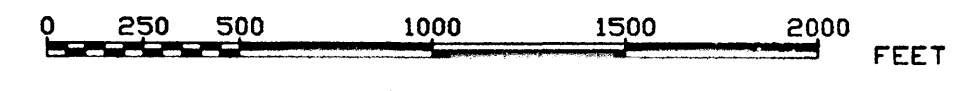
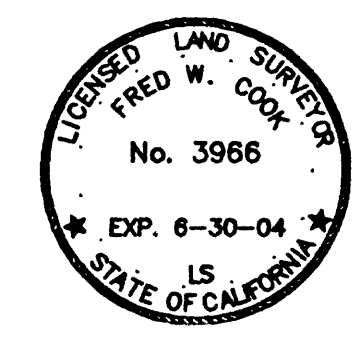
PLUMAS COUNTY RECORDER
 JUDITH WELLS
 BY *Judith Wells*
 DEPUTY
 FEE \$ 10.00
 FILE No. 2002-3797

RECORD OF SURVEY
 FOR
USDA FOREST SERVICE
PLUMAS NATIONAL FOREST

"UPPER SLATE 2"
 IN SECTIONS 9, 10 AND 16,
 T 21 N., R 9 E., MDM.,
 IN THE UNINCORPORATED AREA OF
 PLUMAS COUNTY,
 STATE OF CALIFORNIA

DEL TERRA INC.
SURVEYING
 1168 INDUSTRIAL ST.
 REDDING, CA 96002
 PHONE (530) 241-8050

SCALE: 1" = 500' DATE: AUGUST, 2001
 SHEET 1 OF 2

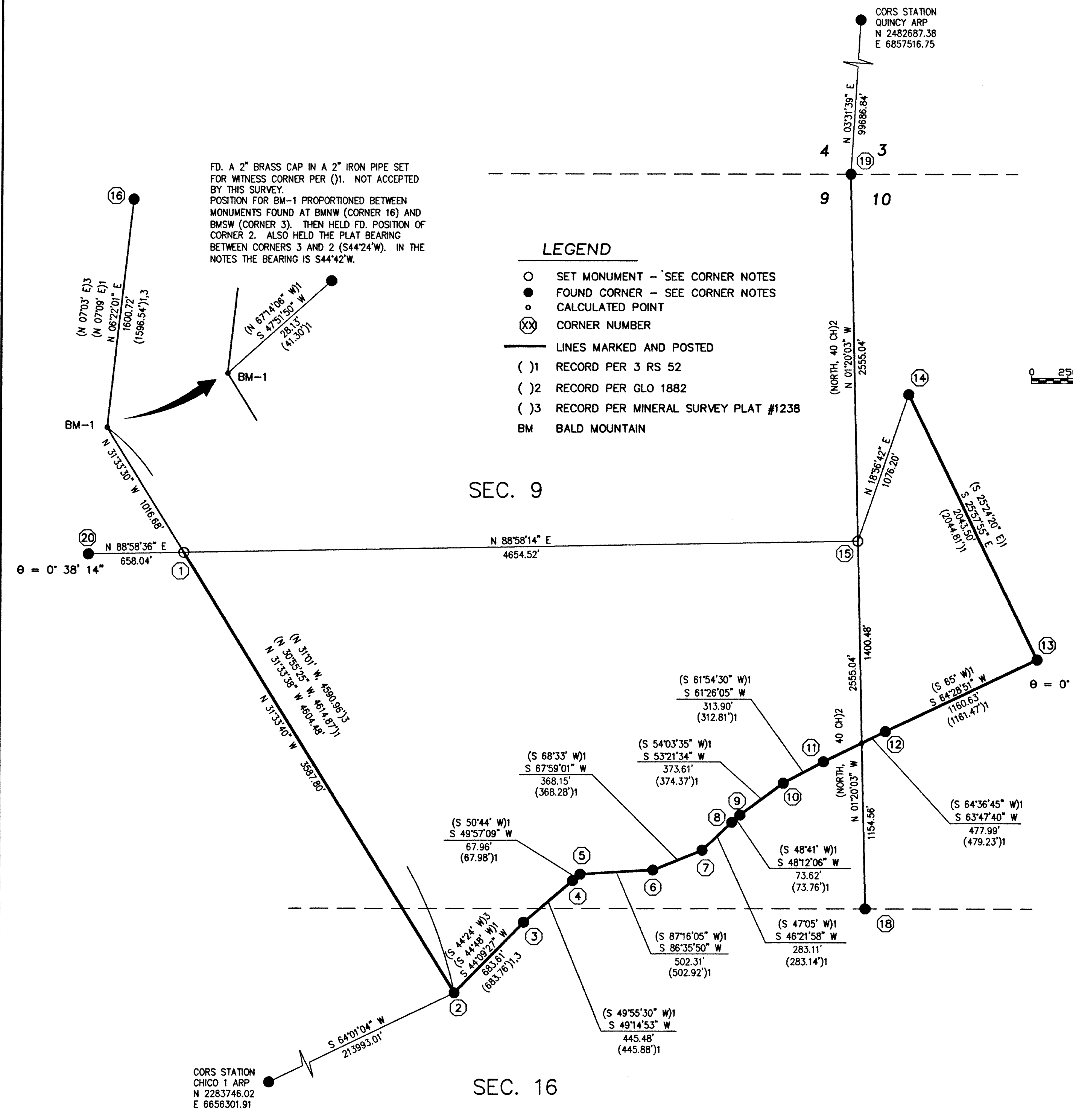


BASIS OF BEARINGS

CALIFORNIA ZONE 2, NAD 83 GRID BEARINGS DERIVED FROM G.P.S. OBSERVATIONS. MAPPING ANGLES SHOWN AT CORNER NUMBERS 13 AND 20. ALL DISTANCES SHOWN AS MEASURED ARE GRID DISTANCES. TO CONVERT TO GROUND, DIVIDE DISTANCES SHOWN BY 0.999972.

SEC. 10

NOTE:
 ALL CALCULATIONS PERFORMED USING BLM'S "CMM" PROGRAM WHICH WORKS USING GEODETTIC COORDINATES. THE CLOSER A LINE IS TO EAST-WEST THE MORE PRONOUNCED IT'S APPARENT CURVE, AND ON THE GRID, POINTS ALONG THESE CURVED LINES APPEAR AS ANGLE POINTS.



FD. A 2" BRASS CAP IN A 2" IRON PIPE SET FOR WITNESS CORNER PER (1). NOT ACCEPTED BY THIS SURVEY. POSITION FOR BM-1 PROPORTIONED BETWEEN MONUMENTS FOUND AT BMNW (CORNER 16) AND BMSW (CORNER 3). THEN HELD FD. POSITION OF CORNER 2. ALSO HELD THE PLAT BEARING BETWEEN CORNERS 3 AND 2 (S44°24'W). IN THE NOTES THE BEARING IS S44°42'W.

- LEGEND**
- SET MONUMENT - SEE CORNER NOTES
 - FOUND CORNER - SEE CORNER NOTES
 - CALCULATED POINT
 - (X) CORNER NUMBER
 - LINES MARKED AND POSTED
 - () (1) RECORD PER 3 RS 52
 - () (2) RECORD PER GLO 1882
 - () (3) RECORD PER MINERAL SURVEY PLAT #1238
 - BM BALD MOUNTAIN

SEC. 9

SEC. 16