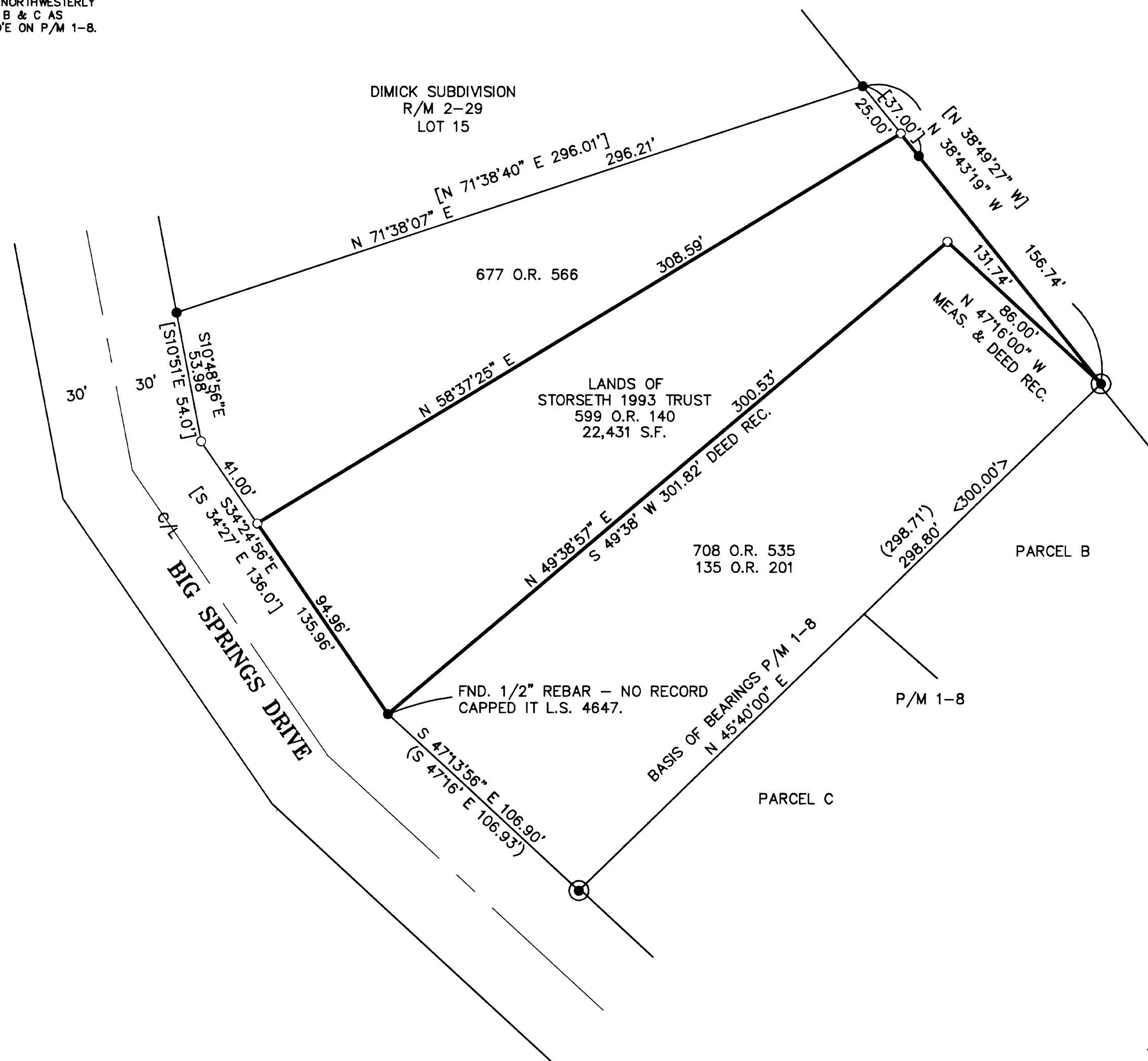


SCALE : 1" = 40'

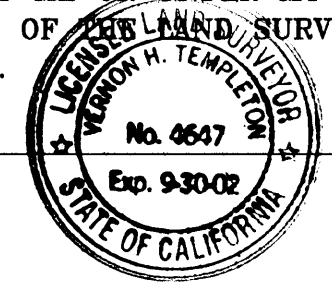
THE BASIS OF BEARINGS OF THIS MAP IS THE NORTHWESTERLY LINE OF PARCELS B & C AS SHOWN AS N45°40'E ON P/M 1-8.



SURVEYOR'S STATEMENT

THIS MAP CORRECTLY REPRESENTS A SURVEY MADE BY ME OR UNDER MY DIRECTION IN CONFORMANCE WITH THE REQUIREMENTS OF THE LAND SURVEYOR'S ACT AT THE REQUEST OF CATHY MAXEY IN NOV. 2001.

Vernon H. Templeton
VERNON H. TEMPLETON, L.S. 4647



COUNTY SURVEYOR'S STATEMENT

THIS MAP HAS BEEN EXAMINED IN ACCORDANCE WITH SECTION 8766 OF THE LAND SURVEYOR'S ACT THIS 26th DAY OF February, 2002.

R. Tom Hunter
R. TOM HUNTER, PLUMAS COUNTY SURVEYOR R.C.E. 30515, EXP.3/31/04

RECORDER'S STATEMENT

FILED THIS 28th DAY OF February, 2002, AT 4:06 PM, IN BOOK 12 OF RECORD OF SURVEYS, AT PAGE 47, AT THE REQUEST OF THE COUNTY SURVEYOR.

FEE: \$8.00
JUDITH WELLS, PLUMAS COUNTY RECORDER

FILE NO.: 1002-02037

BY: *Deputy Recorder*
DEPUTY

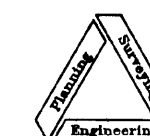
LEGEND

- FOUND 3/4" I.P. TAGGED L.S. 2322 PER R/M 2-29.
- ⊙— FOUND 3/4" I.P. TAGGED L.S. 3202 PER P/M 1-8.
- SET 1/2" REBAR W/ CAP STAMPED L.S. 4647.
- [] INDICATES RECORD INFORMATION PER R/M 2-29.
- () INDICATES RECORD INFORMATION PER P/M 1-8.
- < > INDICATES RECORD INFORMATION PER 135 O.R. 201.

RECORD OF SURVEY FOR ROLF W. & AGNES M. STORSETH 1993 TRUST

IN SECTION 20, T.28 N., R.8 E., M.D.B. & M. PLUMAS COUNTY, CALIFORNIA

SCALE : 1" = 40'



NST Engineering, Inc.
1495 Riverside Drive
Susanville, CA 96130
(530) 257-5173

NOVEMBER 2001
2001-091 SHEET 1 OF 1