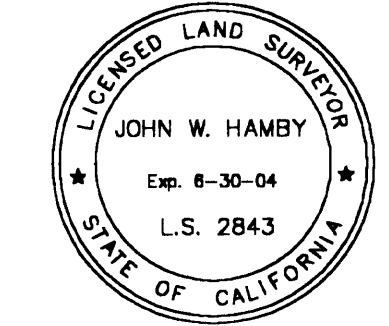


**SURVEYOR'S STATEMENT**

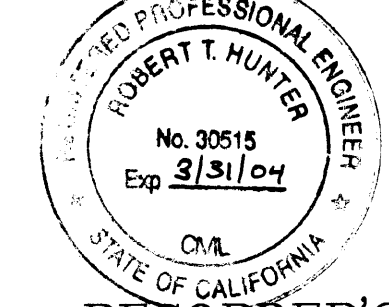
This map correctly represents a survey made by me or under my direction in conformance with the requirements of the Land Surveyors' Act at the request of Steve Mc Kinney in November, 2001.



*John W. Hamby*  
John W. Hamby LS 2843

**COUNTY SURVEYOR'S STATEMENT**

This map has been examined in accordance with Section 8766 of the Land Surveyors' Act this 17<sup>th</sup> day of January, 2002.



*R. Tom Hunter*  
R. Tom Hunter RCE 30515  
PLUMAS COUNTY SURVEYOR  
License Expiration Date 3/31/04

**RECORDER'S STATEMENT**

Filed this 17<sup>th</sup> day of January, 2002 at 1:34 p.m. in Book 12 of Record of Surveys, at page 41, at the request of the County Surveyor.

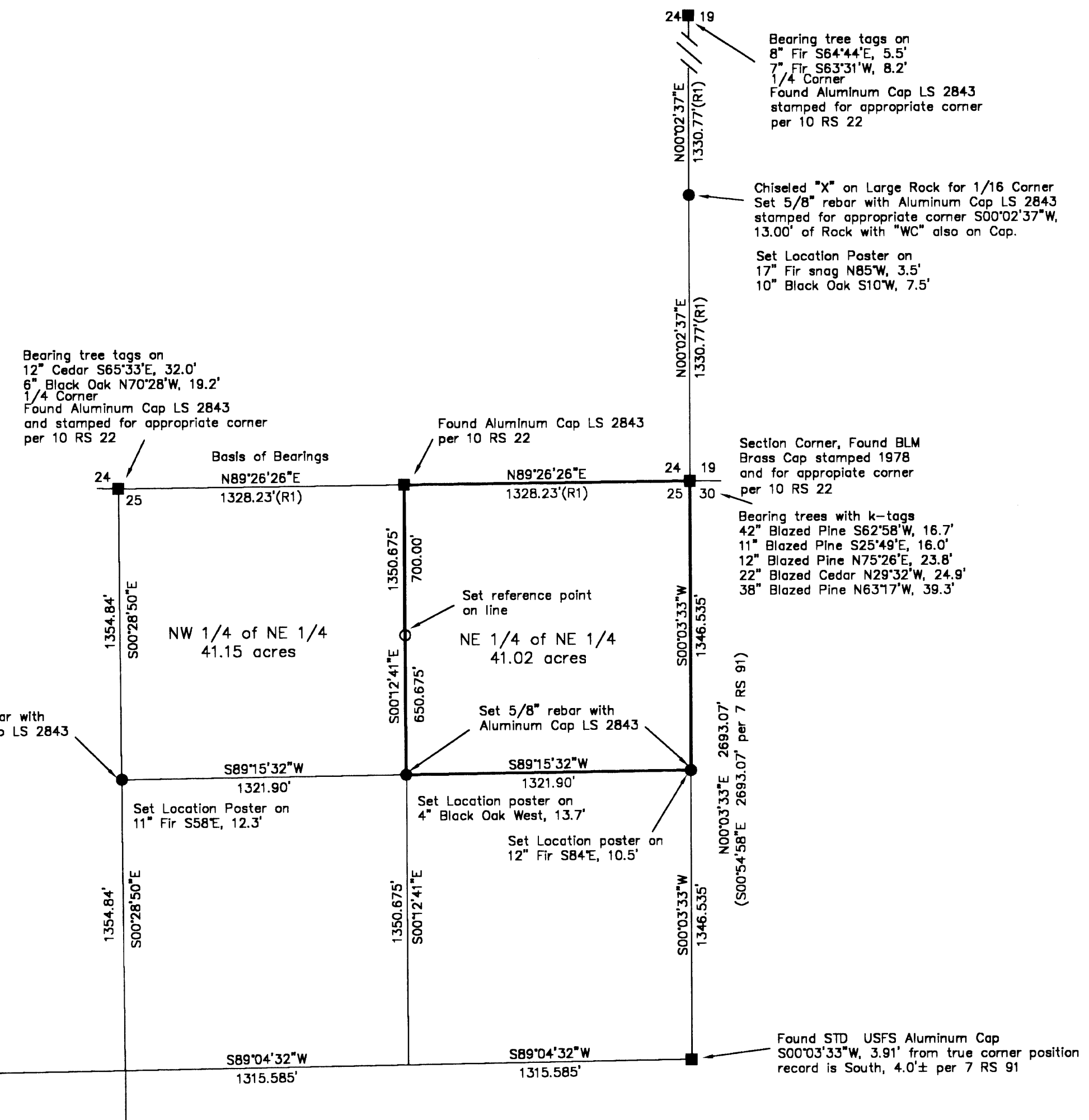
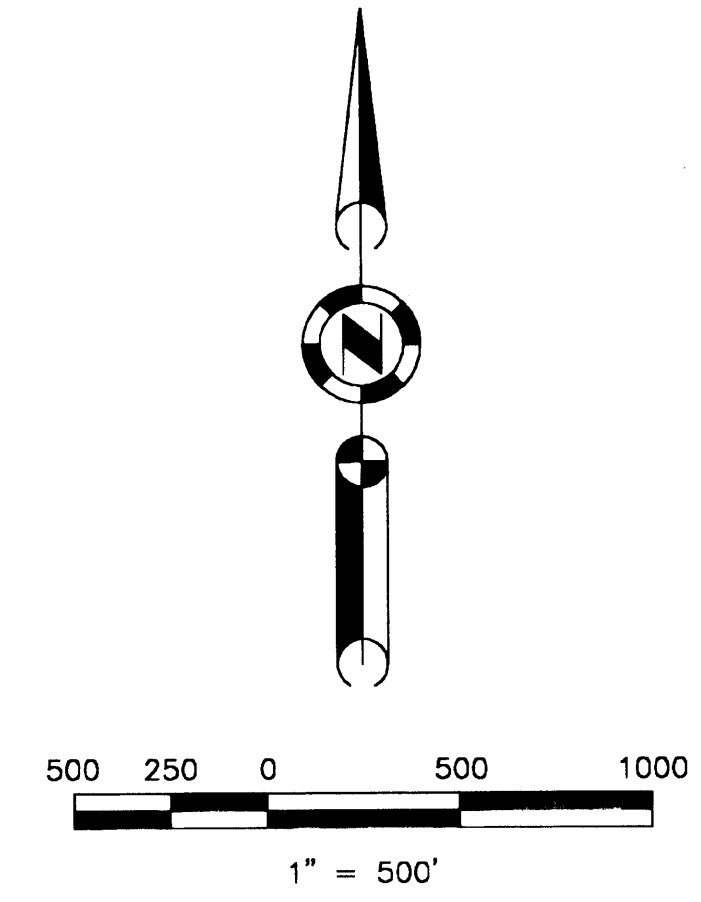
Fee \$ 8.00  
File No. 2002-00635

Judith Wells  
County Recorder  
by *M. Deborah Housen*  
Deputy

**RECORD OF SURVEY  
for  
Steve Mc Kinney**

A portion of the Sections 24 and 25  
T. 23 N., R. 11 E., M.D.M.  
Plumas County ~ California  
Scale 1" = 500' November, 2001

Hamby Surveying Inc.  
P.O. Box 1209  
Portola, CA 96122  
(530) 832-5571



**BASIS OF BEARINGS**

The Basis of Bearings for this map is the North line of the Northeast quarter of Section 25, shown as N89°26'26"E on the Map filed in 10 RS 22.

**LEGEND**

- FOUND point as described
- SET point as described
- Nothing Found or Set
- (R1) RECORD & MEASURED per 10 RS 22 unless shown otherwise

**Bearing Trees**  
Found k-tag on 32" Pine S59°W, 106.8'  
Found 52" Sugar Pine stump S70°W, 24 lks (60" Sugar Pine, S70°W, 24 lks. per G.L.O.)  
Found k-tag on 24" Pine N56°W, 49.5'  
Set bearing tree tag on following trees:  
19" Pine S50°W, 55.9'  
15" Pine N72°E, 10.7'

1/4 Corner  
Found Rock Mound with stone scribed 1/4 and set Aluminum Cap LS 2843 and stamped for appropriate corner