

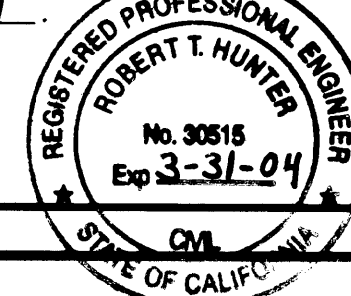
SURVEYOR'S STATEMENT

This map correctly represents a survey made by me or under my direction in conformance with the requirements of the Land Surveyors' Act at the request of Plumas National Forest in July, 2000.

John P. Schmidt
JOHN P. SCHMIDT L.S. 6569
License Exp. Date 9/30/03

COUNTY SURVEYOR'S STATEMENT

This map has been examined in accordance with Section 8766 of the Land Surveyors' Act this 21st day of September, 2001.



R. Tom Hunter
R. Tom Hunter R.C.E. 30515
Plumas County Surveyor
License Exp. Date 03/31/04

RECORDER'S STATEMENT

Filed this 24th day of September, 2001 at 1:23 P. m. in Book 12 of Records of Surveys, at page 24-25, at the request of the County Surveyor.

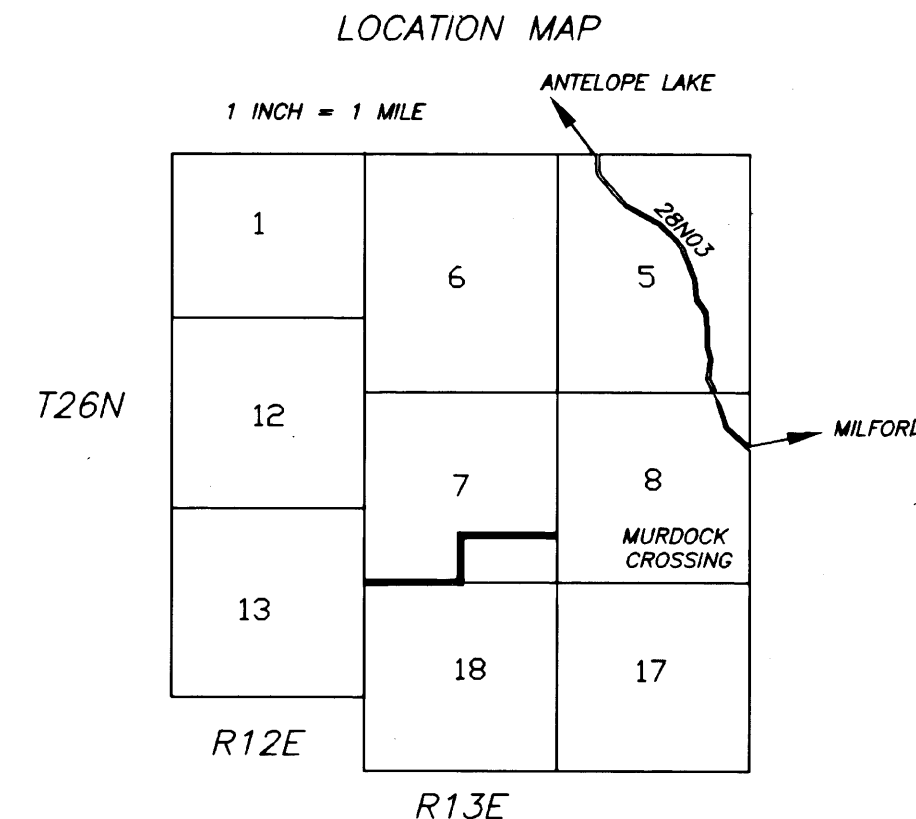
Fee: \$10.00
File No: 1001-08076 By: *Judith Wells*
County Recorder
Deputy

RECORD OF SURVEY

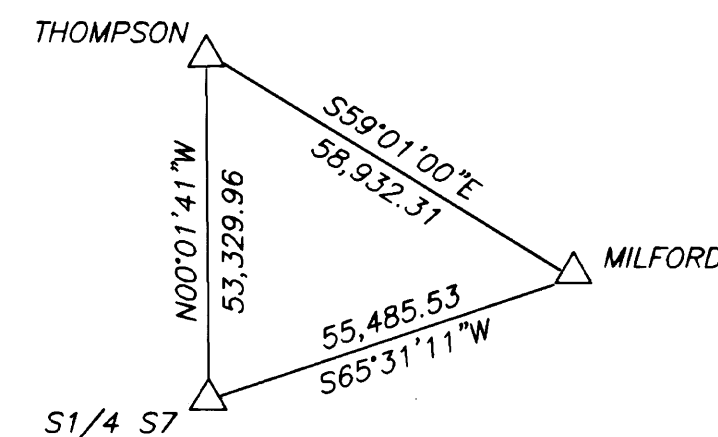
SECTION 7 T26N R13E MOUNT DIABLO MERIDIAN
COUNTY OF PLUMAS STATE OF CALIFORNIA
FOR THE PLUMAS NATIONAL FOREST
PO BOX 11500 QUINCY CALIFORNIA 95971

JULY 2000

SHEET: 1 OF 2



CONTROL SCHEME
NOT TO SCALE



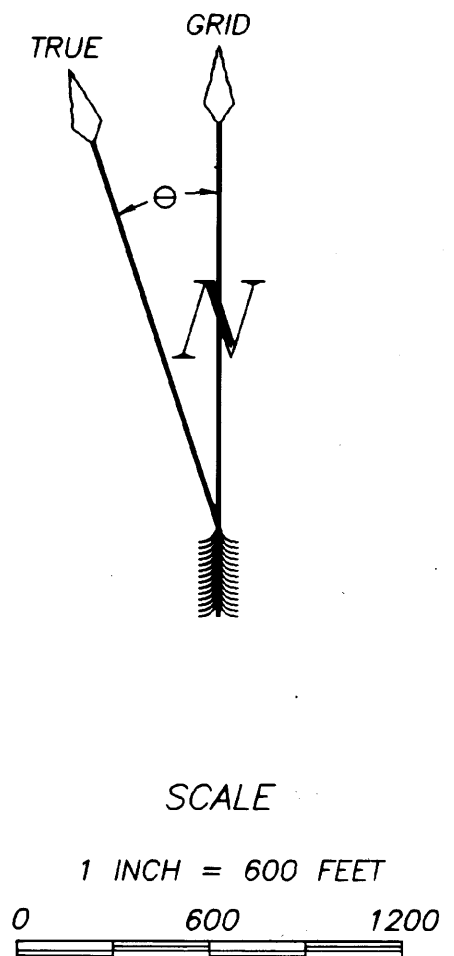
CALIFORNIA COORDINATE SYSTEM OF 1983 (CCS83), ZONE 1

CORNER	NORTHING	EASTING
1	1931202.39	6966725.86
2	1933820.41	6964033.66
3	1931150.63	6961468.82
4	1928484.25	6964088.66
5	1928533.88	6966749.65
6	1931176.15	6964060.92
7	1929830.20	6964074.79
8	1928475.79	6961506.52
9	1929868.14	6966737.76

SURVEY HISTORY

R1	A. SMITH	GLO	1874	GLO
----	----------	-----	------	-----

(ALL RECORD INFORMATION APPEARS IN PARENTHESES)



BASIS OF BEARING

MEASURED BEARINGS AND DISTANCES ARE GRID. THEY ARE BASED ON THE CALIFORNIA COORDINATE SYSTEM OF 1983(CCS83), ZONE 1.

θ AT THE S1/4 OF SECTION 7 IS 00°56'27.2" MULTIPLY GRID DISTANCES BY 1.000297 TO GET GROUND DISTANCES.

CONTROL WAS DONE WITH GPS, TRIMBLE NAVIGATION, 4000 ST, SINGLE FREQUENCY RECEIVERS. CONTROL WAS BROUGHT IN USING THE FOLLOWING STATIONS:

"MILFORD"
LATITUDE: 40°10'32.48523" N 1951476.45 N
LONGITUDE: 120°22'44.59146" W 7014586.22 E

"THOMPSON"
LATITUDE: 40°15'40.97670" N 1981814.21 N
LONGITUDE: 120°33'28.98093" W 6964062.58 E

LATITUDES AND LONGITUDES AS PUBLISHED BY NATIONAL GEODETIC SURVEYS [NGS] ON JULY 29, 1992.

LEGEND

- FOUND CORNER
- SET CORNER
- PROPERTY BOUNDARY MARKED AND POSTED