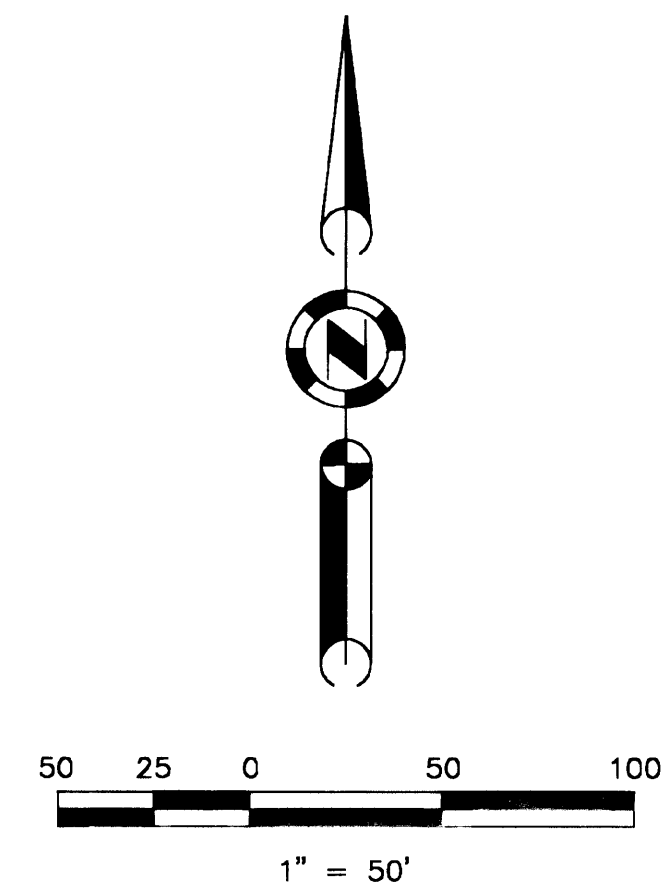
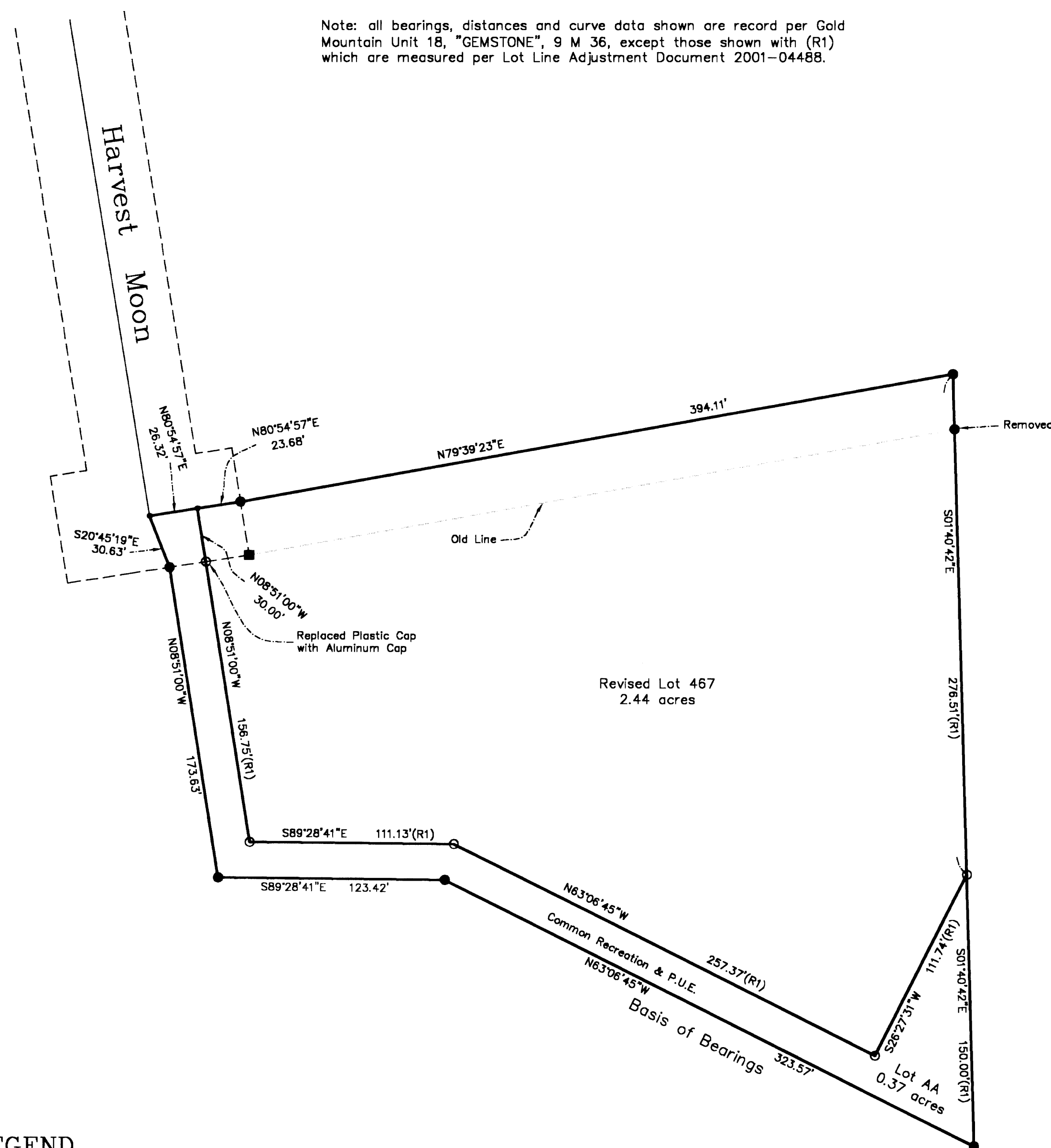


Note: all bearings, distances and curve data shown are record per Gold Mountain Unit 18, "GEMSTONE", 9 M 36, except those shown with (R1) which are measured per Lot Line Adjustment Document 2001-04488.



The Basis of Bearings of this map is the Southerly line of Lot 467 shown as N63°06'45"W, in Book 9 of Maps at page 36, Plumas County records.

Note: This Record of Survey was prepared to reflect a Lot Line Adjustment for which a resolution is Recorded as Document 2001-04488 of Official Records

# RECORD OF SURVEY for Gold Mountain Ranch, Inc. Gold Mountain Subdivision

A portion of Section 15  
T. 22 N., R. 13 E., M.D.M.

Plumas County ~ California  
Scale 1" = 50' April, 2001

Hamby Surveying Inc.  
P.O. Box 1209  
Portola, CA 96122  
(530) 832-5571

SHEET 3 OF 3

## LEGEND

- FOUND Rebar with Aluminum Cap LS 2843
  - FOUND 5/8" Rebar with Plastic Cap LS 2843
  - SET 5/8" Rebar with Aluminum Cap LS 2843
  - Nothing found or set
- (R1) Record per Document 2001-04488