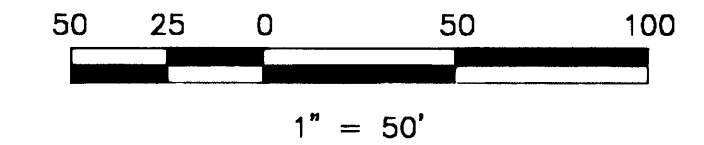
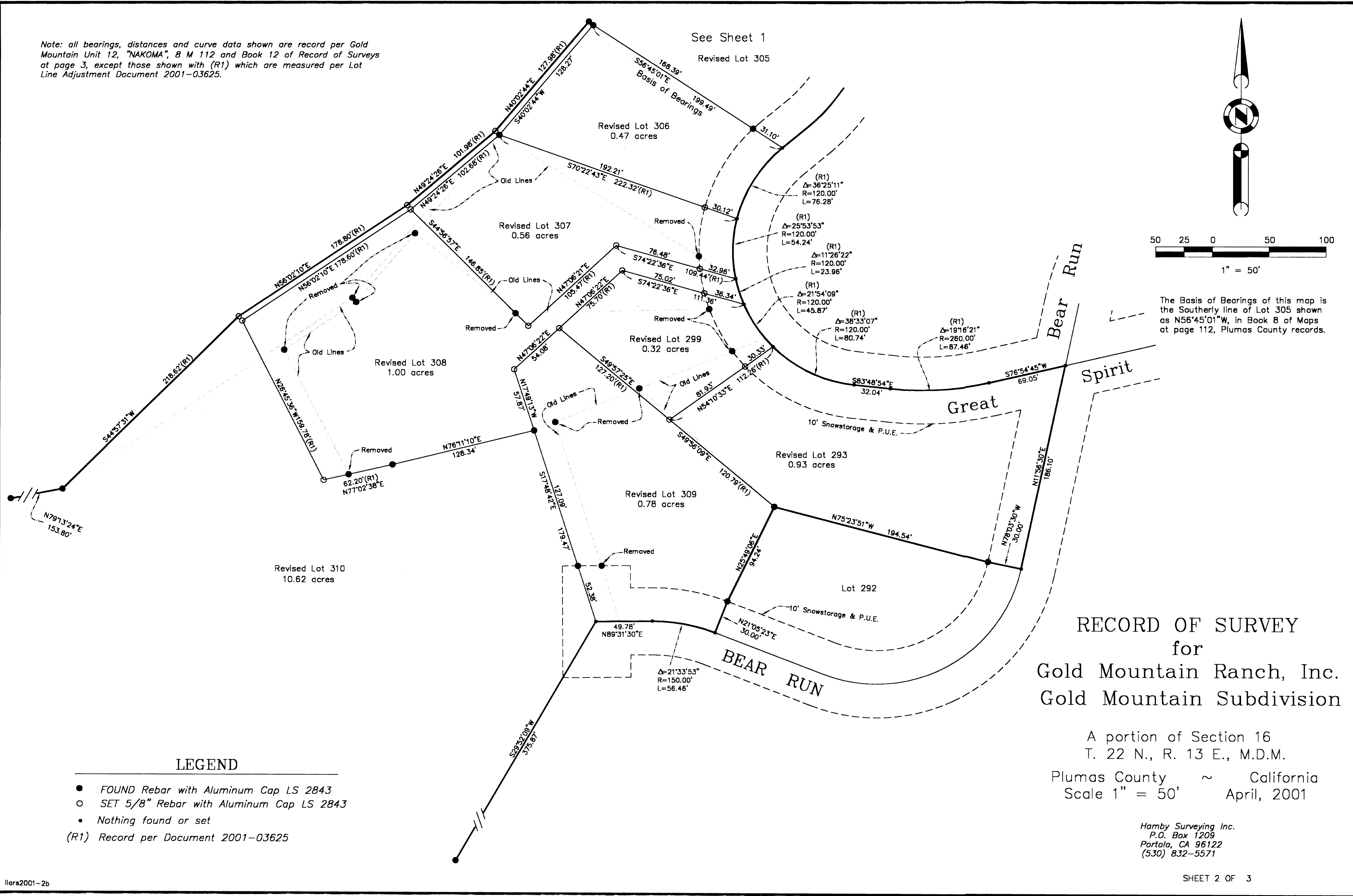


Note: all bearings, distances and curve data shown are record per Gold Mountain Unit 12, "NAKOMA", B M 112 and Book 12 of Record of Surveys at page 3, except those shown with (R1) which are measured per Lot Line Adjustment Document 2001-03625.



The Basis of Bearings of this map is the Southerly line of Lot 305 shown as N56°45'01"W, in Book 8 of Maps at page 112, Plumas County records.



LEGEND

- FOUND Rebar with Aluminum Cap LS 2843
 - SET 5/8" Rebar with Aluminum Cap LS 2843
 - Nothing found or set
- (R1) Record per Document 2001-03625

RECORD OF SURVEY
for
Gold Mountain Ranch, Inc.
Gold Mountain Subdivision

A portion of Section 16
T. 22 N., R. 13 E., M.D.M.
Plumas County ~ California
Scale 1" = 50' April, 2001

Hamby Surveying Inc.
P.O. Box 1209
Portola, CA 96122
(530) 832-5571