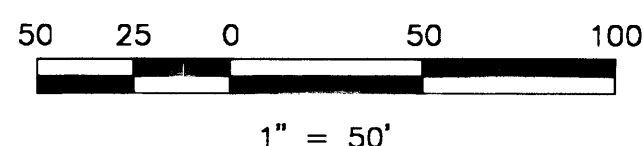
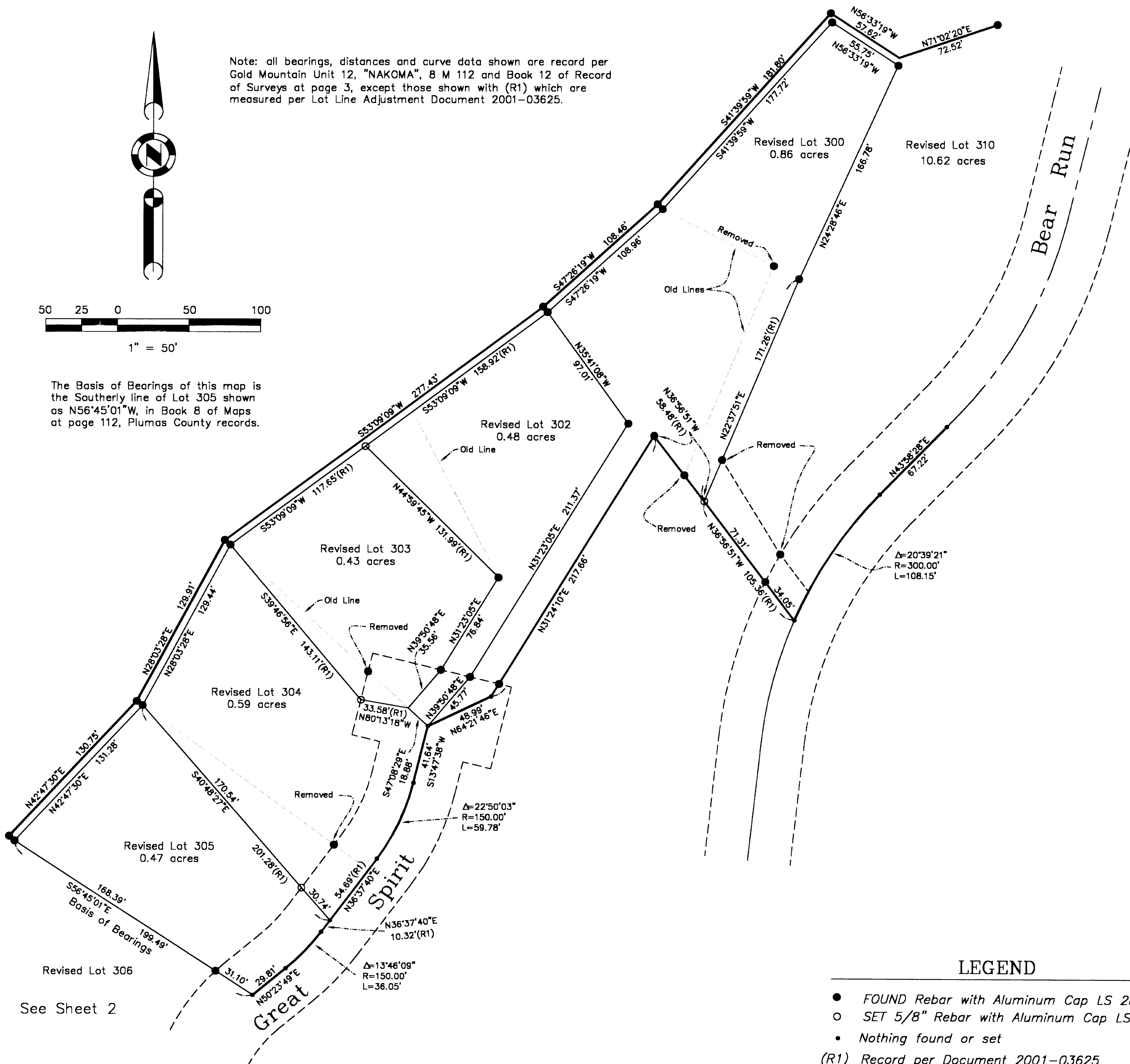


Note: all bearings, distances and curve data shown are record per Gold Mountain Unit 12, "NAKOMA", 8 M 112 and Book 12 of Record of Surveys at page 3, except those shown with (R1) which are measured per Lot Line Adjustment Document 2001-03625.

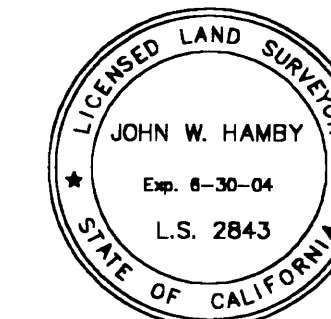


The Basis of Bearings of this map is the Southerly line of Lot 305 shown as N56°45'01"W, in Book 8 of Maps at page 112, Plumas County records.



**SURVEYOR'S STATEMENT**

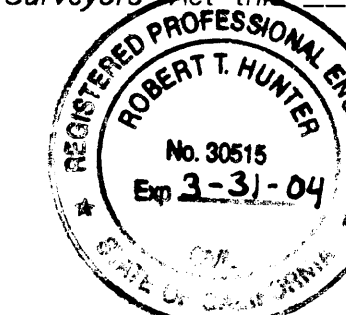
This map correctly represents a survey made by me or under my direction in conformance with the requirements of the Land Surveyors' Act at the request of Dariel Garner in April, 2001.



*John W. Hamby*  
John W. Hamby LS 2843

**COUNTY SURVEYOR'S STATEMENT**

This map has been examined in accordance with Section 8766 of the Land Surveyors' Act this 10<sup>th</sup> day of August, 2001.



*R. Tom Hunter*  
R. Tom Hunter RCE 30515  
PLUMAS COUNTY SURVEYOR  
License Expiration Date 3/31/04

**RECORDER'S STATEMENT**

Filed this 13<sup>th</sup> day of August, 2001 at 4:38 P.M. in Book 12 of Record of Surveys, at page 17-19, at the request of the County Surveyor.

Fee \$12.00  
File No. 2001-06501

Judith Wells  
County Recorder  
by *Catherine Samuel*  
Deputy

Note: This Record of Survey was prepared to reflect a Lot Line Adjustment for which a resolution is Recorded as Document 2001-03625 of Official Records

**RECORD OF SURVEY**  
for  
**Gold Mountain Ranch, Inc.**  
**Gold Mountain Subdivision**

A portion of Section 16  
T. 22 N., R. 13 E., M.D.M.

Plumas County ~ California  
Scale 1" = 50' April, 2001

**LEGEND**

- FOUND Rebar with Aluminum Cap LS 2843
- SET 5/8" Rebar with Aluminum Cap LS 2843
- Nothing found or set
- (R1) Record per Document 2001-03625

Hamby Surveying Inc.  
P.O. Box 1209  
Portola, CA 96122  
(530) 832-5571