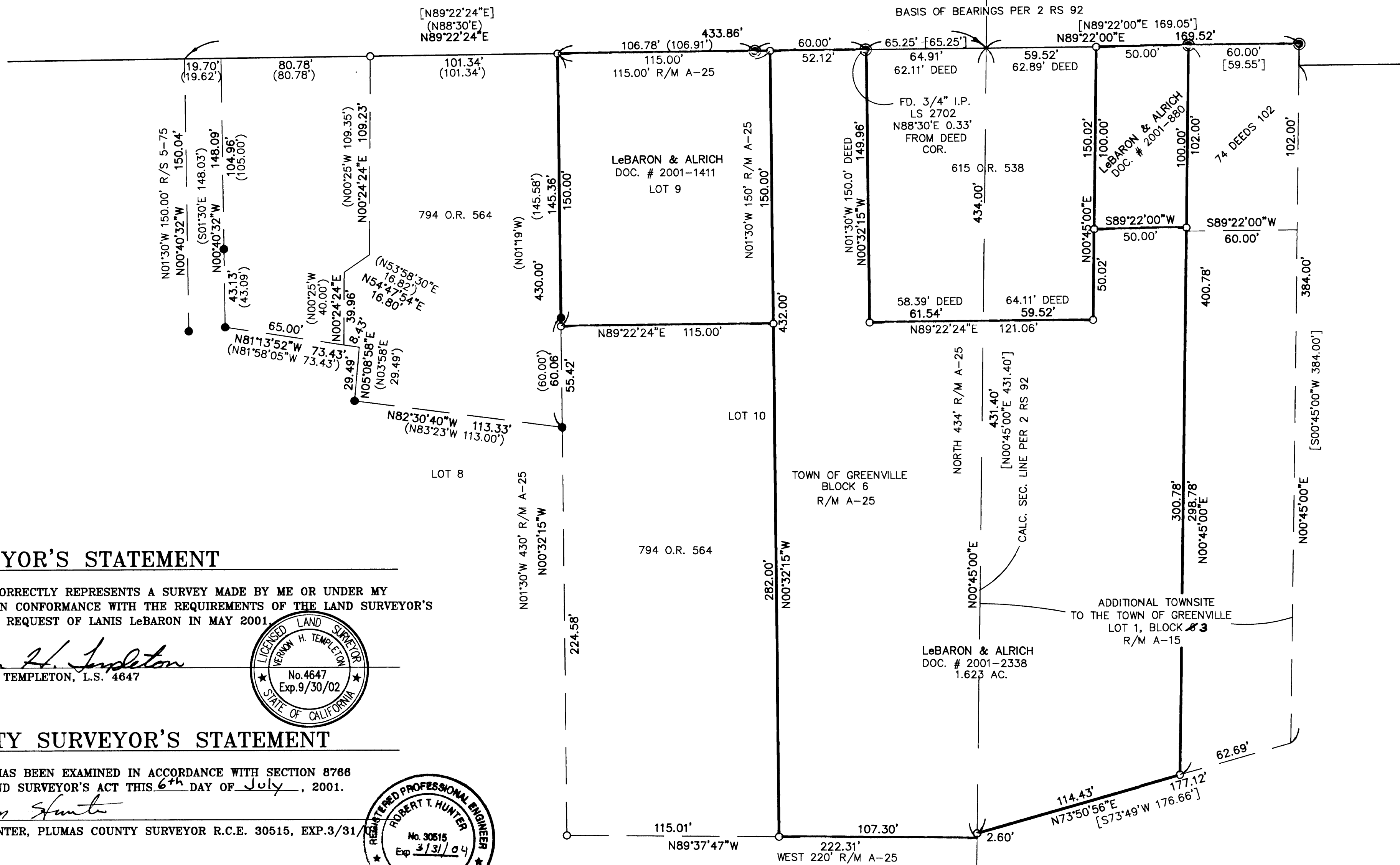
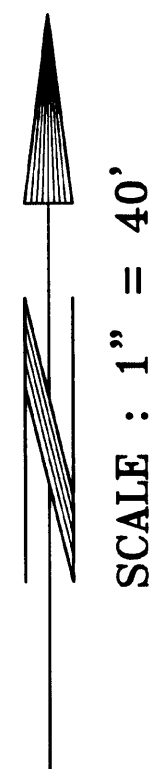


CRESCENT STREET - CALIF. STATE HWY. NO. 89



SURVEYOR'S STATEMENT

THIS MAP CORRECTLY REPRESENTS A SURVEY MADE BY ME OR UNDER MY DIRECTION IN CONFORMANCE WITH THE REQUIREMENTS OF THE LAND SURVEYOR'S ACT AT THE REQUEST OF LANIS LeBARON IN MAY 2001.

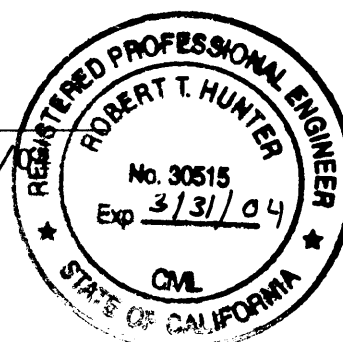
Vernon H. Templeton
 VERNON H. TEMPLETON, L.S. 4647



COUNTY SURVEYOR'S STATEMENT

THIS MAP HAS BEEN EXAMINED IN ACCORDANCE WITH SECTION 8766 OF THE LAND SURVEYOR'S ACT THIS 6th DAY OF July, 2001.

R. Tom Hunter
 R. TOM HUNTER, PLUMAS COUNTY SURVEYOR R.C.E. 30515, EXP.3/31/04



RECORDER'S STATEMENT

FILED THIS 6th DAY OF July, 2001, AT 10:20 AM, IN BOOK 12 OF RECORD OF SURVEYS, AT PAGE 13, AT THE REQUEST OF THE COUNTY SURVEYOR.

FEE: \$800 FILE NO.: 2001-05276
 JUDITH WELLS, PLUMAS COUNTY RECORDER

BY: *Judith Wells*
 DEPUTY

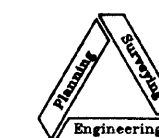
LEGEND

- FOUND MONUMENTS TAGGED RCE 22836 PER 7 PM 7 EXCEPT AS NOTED.
- ⊙ FOUND MONUMENTS TAGGED LS 2702 PER 2 RS 92.
- SET 1/2" REBAR W/ CAP STAMPED LS 4647.
- () RECORD INFORMATION PER 7 PM 7.
- [] RECORD INFORMATION PER 2 RS 92.

RECORD OF SURVEY FOR Lanis LeBaron & Henry P. Alrich

IN SECTIONS 2 & 3, T.26 N., R.9 E., M.D.B. & M. PLUMAS COUNTY, CALIFORNIA

SCALE : 1" = 40'



NST Engineering, Inc.
 1495 Riverside Drive
 Susanville, CA 96130
 (916) 257-5173
 2001-026 RS

MAY 21, 2001
 SHEET 1 OF 1