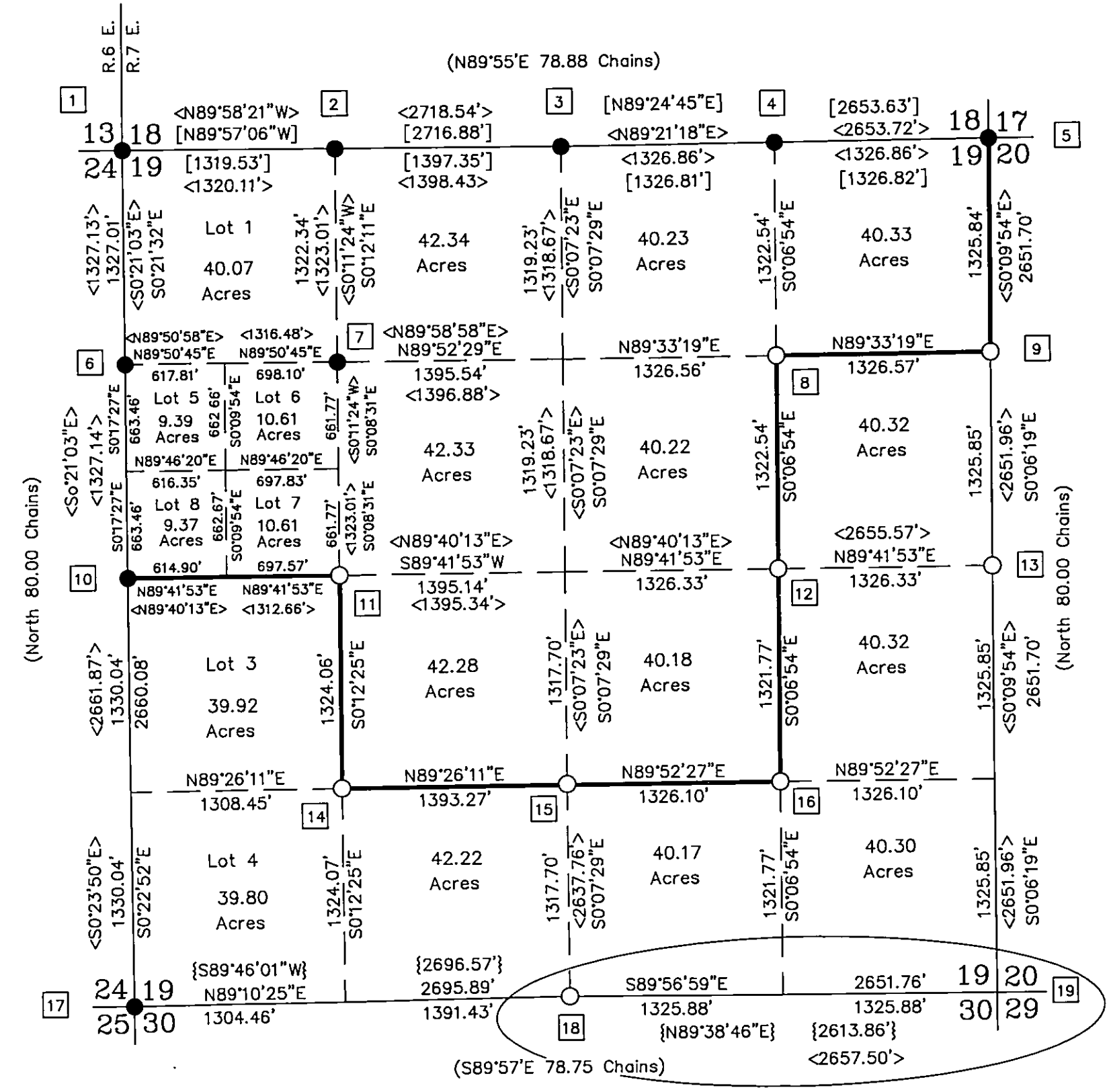


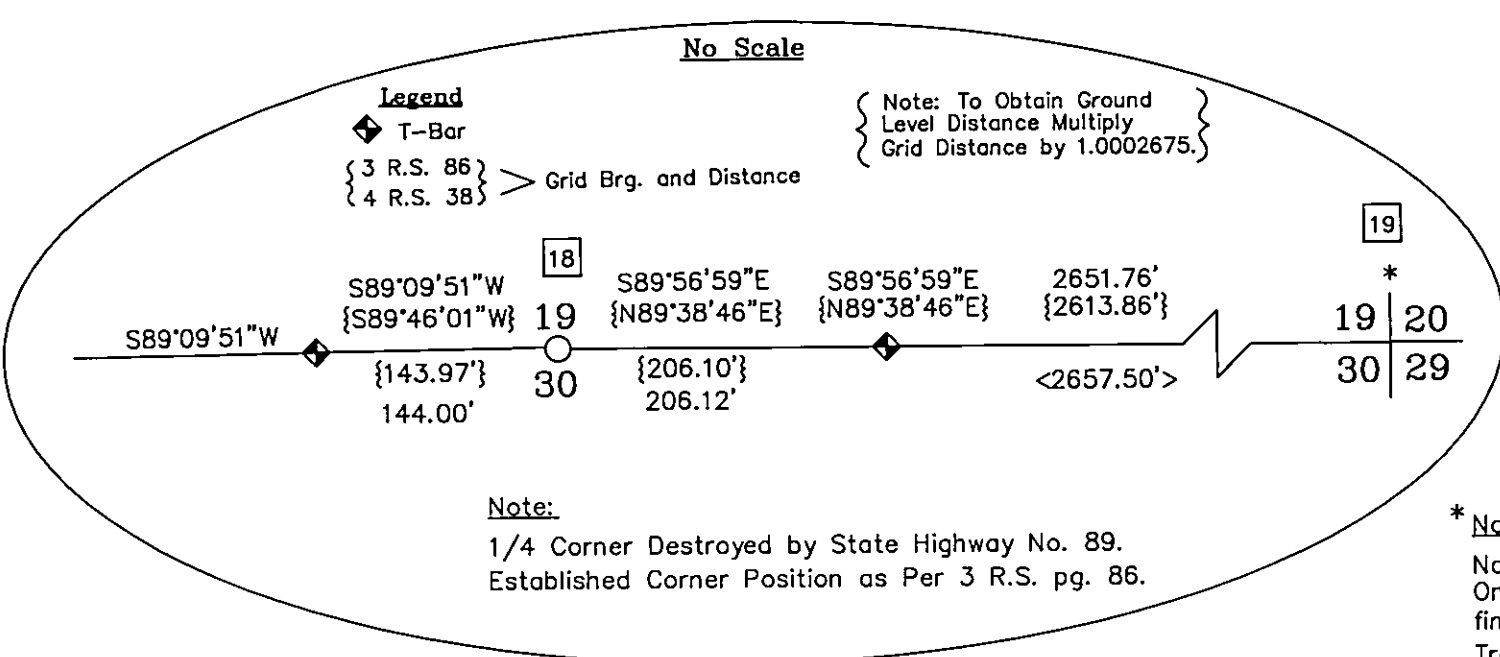
T.28N. R.7E. Section 19

Basis of Bearing: [N89°24'45"E] from the North 1/4 to the Northeast Corner of Section 19 as per Book 10 R.O.S. Page 110.

Scale 1" = 800'



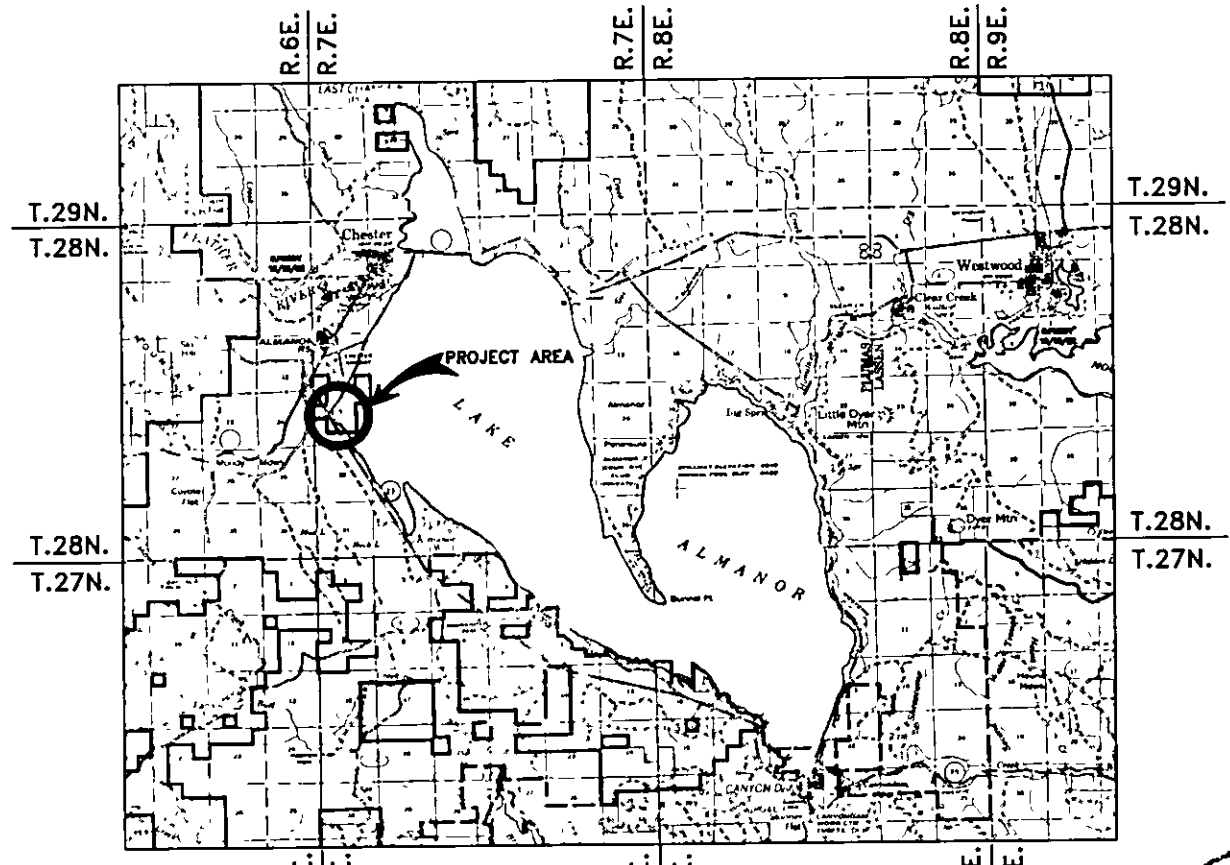
See Detail A



Note: 1/4 Corner Destroyed by State Highway No. 89. Established Corner Position as Per 3 R.S. pg. 86.

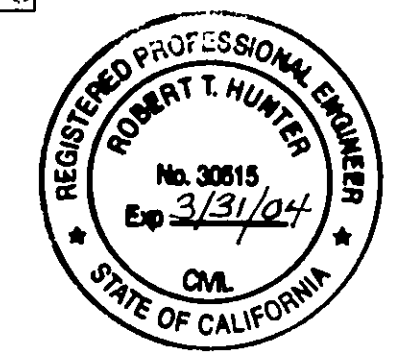
* Note: No evidence of Section Corner can be found. On a Sargent Unrecorded Plat (1955) Sargent finds the Original Tree Corner and a Bearing Tree 37.2' to the West, not of Record. A Forest Service Recovery Card (1962) shows a down tree with scribing about 58 links West of approx. Corner. Based on the above and the short distance [2613.86'] in 3 R.S. 86, I feel that the True Corner Position lies 37.2' East of said position. Plat and Recovery Card on file in Plumas County Engineer's Office.

Vicinity Map



LEGEND

- 1 Key to Corner Notes.
● Found Monuments as described.
○ Set Monuments as described.
◆ Found Caltrans T-bar
[] Record data as per Book 10 R.O.S. page 110.
< > Record data as per Unrecorded Sargent Plats.
() Record data as per G.L.O. (1871)
{ } Record data as per Book 4 R.O.S Pgs.. 37-39. Book 3 R.O.S Pgs.. 86-89.
— Property Lines Marked and Posted.
LASSEN NATIONAL FOREST



SURVEYOR'S STATEMENT

This map correctly represents a survey made by me or under my direction in conformance with the requirements of the Professional Land Surveyor's Act at the request of the U.S.D.A. Forest Service in November 2002



John S. Rea ~ L.S. 5176 Expires 6-30-07

COUNTY SURVEYOR'S STATEMENT

This map has been examined in accordance with Section 8766 of the Professional Land Surveyor's Act this 15th day of July, 2003.

R. Tom Hunter ~ Plumas County Surveyor R.C.E. No. 30515 Lic. Exp. Date 3-31-04

RECORDER'S STATEMENT

Filed this 16th day of July, 2003, at 10:55 A.M., in Book 12 of Record of Surveys at page 137-138 at the request of the County Surveyor.

Kathleen Williams Plumas County Recorder

Deputy

Fee \$10.00

File No. 2003-7925

March 2003

Survey History

- 1866 -J.M. Ingalls, (G.L.O.) surveyed the Interior, Range and Township lines in T28N R7E.
1955 -Loren Sargent, Subdivision of Sections 18 and 19.....unrecorded plat.
1957 -Loren Sargent, Subdivision of Sections 24 and 25.....unrecorded plat.
1964 -B.L.M. Supplemental Plat for Section 19.
1973 -Caltrans Corner ties Sections 18 and 19. Book 3 R.O.S. pgs. 86 and 89, Book 4 R.O.S. pgs. 37-39.
1974 -B.L.M. Corner Remonumentation.
1996 -John Rea, Subdivision of Section 18, Book 10 R.O.S. pg 110.

RECORD OF SURVEY FOR LASSEN NATIONAL FOREST

In Section 19 T.28N. R.7E., M.D.M. in the unincorporated territory of Plumas County, CA.

Lassen National Forest 2550 Riverside Drive Susanville, California 96130