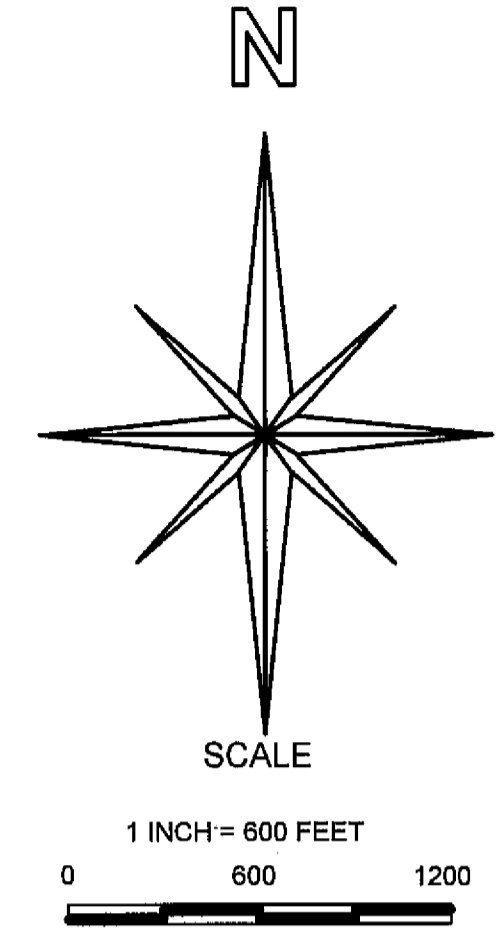
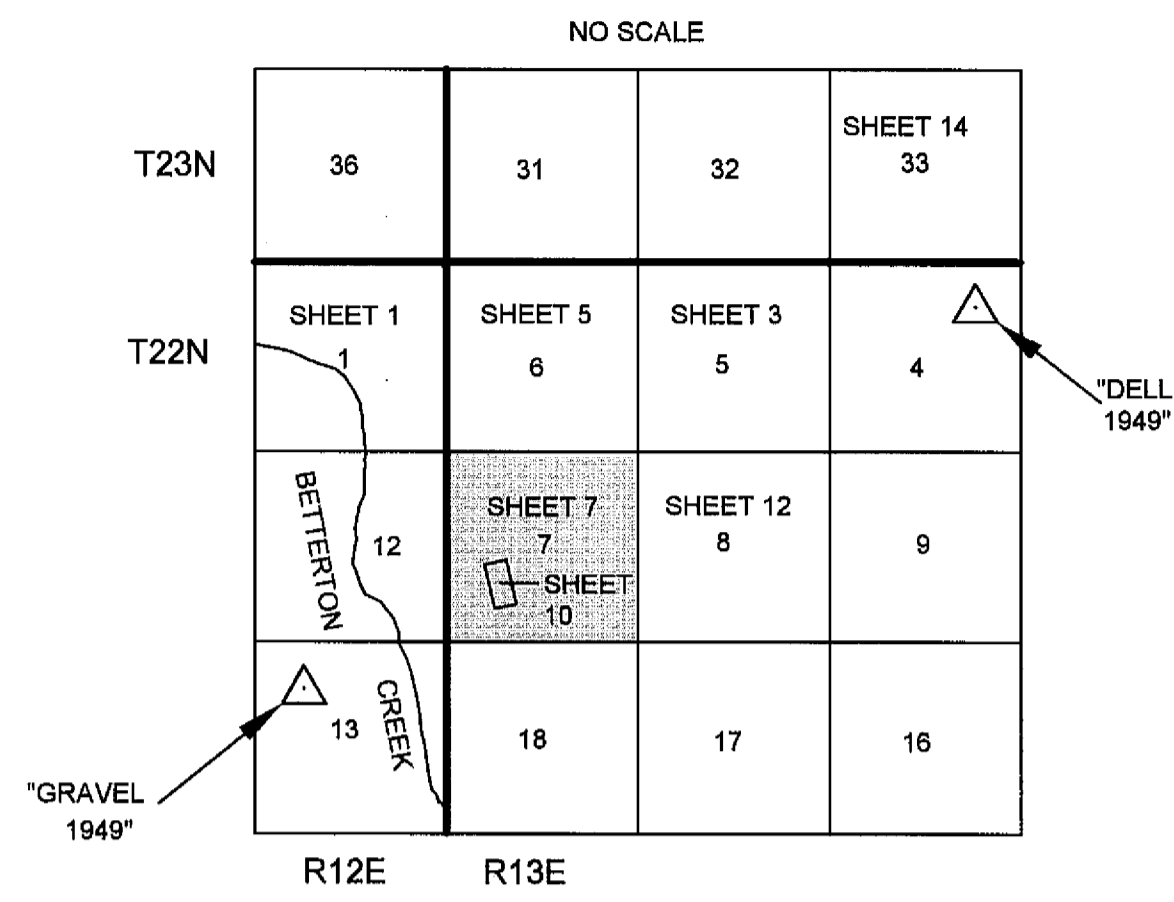


PROJECT LOCATION & CONTROL SCHEME



GENERAL NOTES

A STANDARD UNITED STATES FOREST SERVICE (USFS) DRIVE-IN MONUMENT IS A 5/8" DIAMETER ALUMINUM ROD WITH A 3-1/4" ALUMINUM CAP EDGE-MARKED WITH THE USFS LOGO.

A STANDARD BUREAU OF LAND MANAGEMENT (BLM) MONUMENT IS A 3" DIAMETER STEEL PIPE, 30" LONG WITH A 3&1/2" BRASS CAP EDGE-MARKED WITH THE BLM LOGO.

BASIS OF BEARING

MEASURED BEARINGS AND DISTANCES ARE GRID. THEY ARE BASED ON THE CALIFORNIA COORDINATE SYSTEM OF 1983(CCS83), ZONE 1.

Q AT THE S1/4 SECTION 7 IS 00°56'27". MULTIPLY GRID DISTANCES BY 1.000174 TO GET GROUND DISTANCES.

CONTROL WAS DONE WITH GPS, TRIMBLE NAVIGATION, 4000 ST, SINGLE FREQUENCY RECEIVERS. CONTROL WAS BROUGHT IN USING THE FOLLOWING STATIONS:

"GRAVEL 1949"
 LATITUDE: 39°46'22.82395" N 1803819.4802 N
 LONGITUDE: 120°35'03.32548" W 6959624.0422 E

"DELL 1949"
 LATITUDE: 39°48'03.87786" N 1814345.3519 N
 LONGITUDE: 120°31'02.11293" W 6978283.7269 E

LATITUDES AND LONGITUDES AS PUBLISHED BY NATIONAL GEODETIC SURVEYS (NGS) IN FEBRUARY 1987.

SURVEY HISTORY OF SECTION 7

R	SURVEYOR	DATE	MONUMENT
R1	D. HALL	1881	GLO
R4	A. KEDDIE	1872	GLO
R5	G. HENDERSON	1973	4PM29
R7	J. HAMBY	1985	7RS40
R9	J. HAMBY	1990	8RS129
R10	E. NORRIS	1964	3RS2

CALIFORNIA COORDINATE SYSTEM OF 1983 (CCS83), ZONE 1

CORNER	NORTHING	EASTING
6	1810805.2312	6963552.8851
35	1810815.2928	6966107.2270
26	1810825.5318	6969674.3402
43	1808119.3632	6968672.7549
45	1805412.2296	6968671.5425
47	1805411.6210	6966045.3303
49	1805453.9220	6963648.5710
51	1808125.1614	6963600.9745

LEGEND

- FOUND CORNER
- SET CORNER
- PROPERTY BOUNDARY MARKED AND POSTED

RECORD OF SURVEY

SECTION 1 T22N R12E, SECTIONS 5,6,&8 T22N R13E, SECTION 33 T23N R13E MDM
SECTION 7 T22N R13E
 PLUMAS COUNTY, CALIFORNIA
 FOR
PLUMAS NATIONAL FOREST
 PO BOX 11500 QUINCY, CALIFORNIA 95971

CREW: B.SNOW, D.GREENWELL, J.SCHMIDT, R.KNOETTGEN, R.KNOETTGEN & B.SNOW
DRAWN BY: R.KNOETTGEN & B.SNOW

SHEET 7 OF 15